

# UK closes up as the European Union opens up

Sentinel-2 MSI acquired on 21 September 2019 at 10:57:39 UTC

Sentinel-2 MSI acquired on 31 May 2020 at 11:06:19 UTC

Sentinel-1 CSAR IW acquired on 02 June 2020 at 17:49:01 UTC

Sentinel-1 CSAR IW acquired on 03 June 2020 at 17:41:23 UTC

Author(s): Sentinel Vision team, VisioTerra, France - [svp@visioterra.fr](mailto:svp@visioterra.fr)

Keyword(s): Infrastructure, health, airport, transport, tourism, Channel, UK, United Kingdom.



[2D Layerstack](#)

Fig. 1 - S1 (03.06.2020) - Port of Dover welcomes yearly 12 millions passengers, it is World's second busiest passenger port.

[2D view](#)



Anyone arriving in the UK (except from Ireland) must observe a 14-day quarantine from 8 June. This contrasts with the reopening started in the EU.

Fig. 2 - S2 (21.09.2019) - Eurostar carried 11 million people through Channel Tunnel in 2018, connecting UK, France, Belgium & Netherlands. [2D view](#)





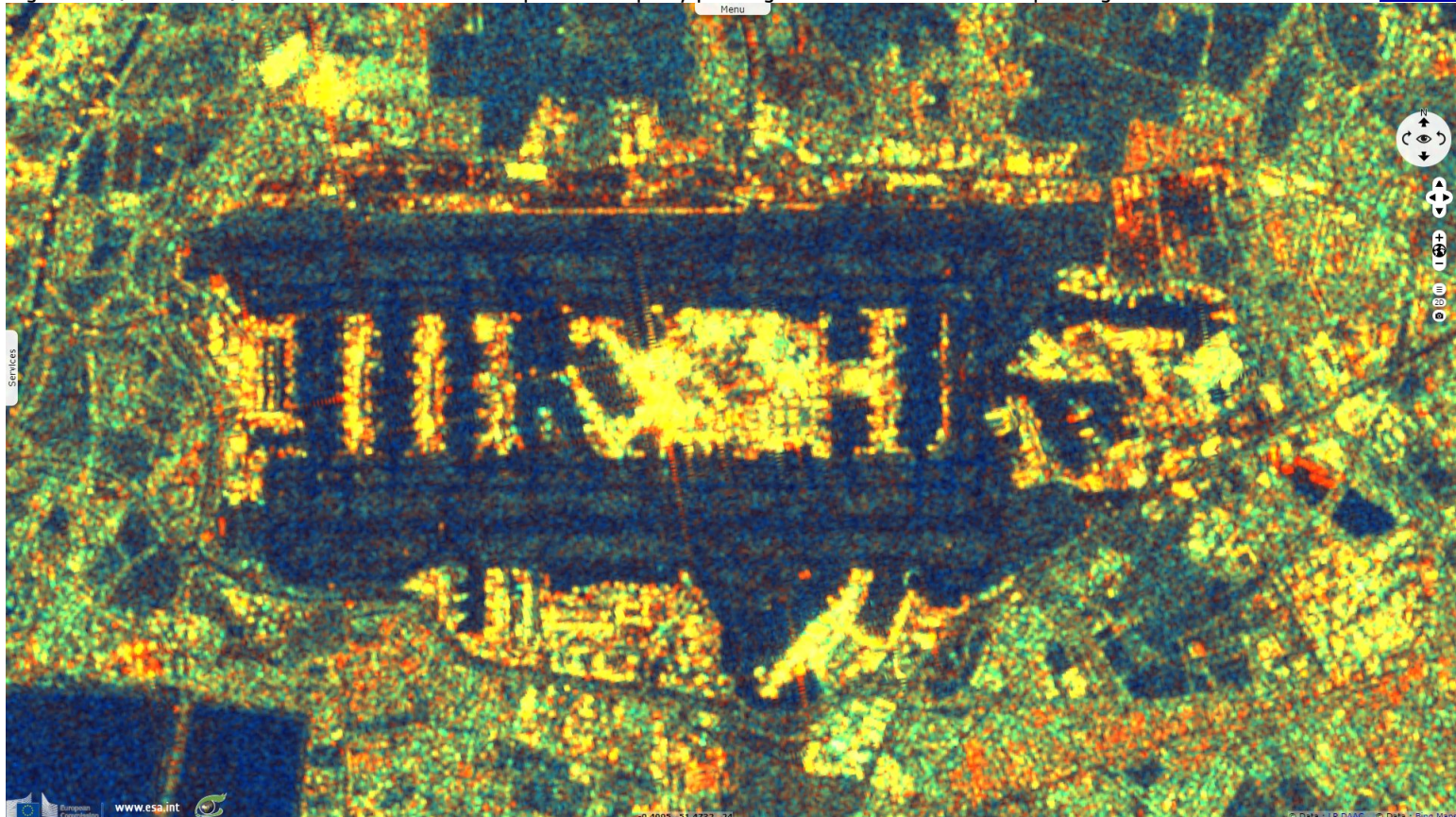
Fig. 3 - S2 (31.05.2020) - London Heathrow international airport counts 2 runways, 80 airlines flying to 185 destinations in 84 countries.

[2D view](#)



Fig. 4 - S1 (02.06.2020) - Heathrow is the busiest airport in Europe by passenger traffic with 80.8 million passengers in 2019.

[2D view](#)



*The views expressed herein can in no way be taken to reflect the official opinion of the European Space Agency or the European Union.  
Contains modified Copernicus Sentinel data 2019, processed by VisioTerra.*

More on European Commission space:							
More on ESA:				<a href="#">S-1 website</a>	<a href="#">S-2 website</a>	<a href="#">S-3 website</a>	
More on Copernicus program:				<a href="#">SciHub portal</a>	<a href="#">Cophub portal</a>	<a href="#">Inthub portal</a>	<a href="#">Colhub portal</a>
More on VisioTerra:				<a href="#">Sentinel Vision Portal</a>	<a href="#">Envisat+ERS portal</a>	<a href="#">Swarm+GOCE portal</a>	<a href="#">CryoSat portal</a>