

# Clipperton / Passion Island

Sentinel-2 MSI (1 tile) acquired on **09 April 2017** at 17:51:01 GMT  
Sentinel-1A C-SAR SM DV GRD acquired on **09 October 2016** at 13:08:37 GMT

Author(s): Sentinel Vision team. VisioTerra, France - [svp@visioterra.fr](mailto:svp@visioterra.fr)

Keyword : coastal, Passion Island, Clipperton, France



2D

3D

Fig. 1 - S2 and S1 images around Clipperton Island, a remote 6 km<sup>2</sup> French atoll, 900 km away from the closest land. [3D view](#)

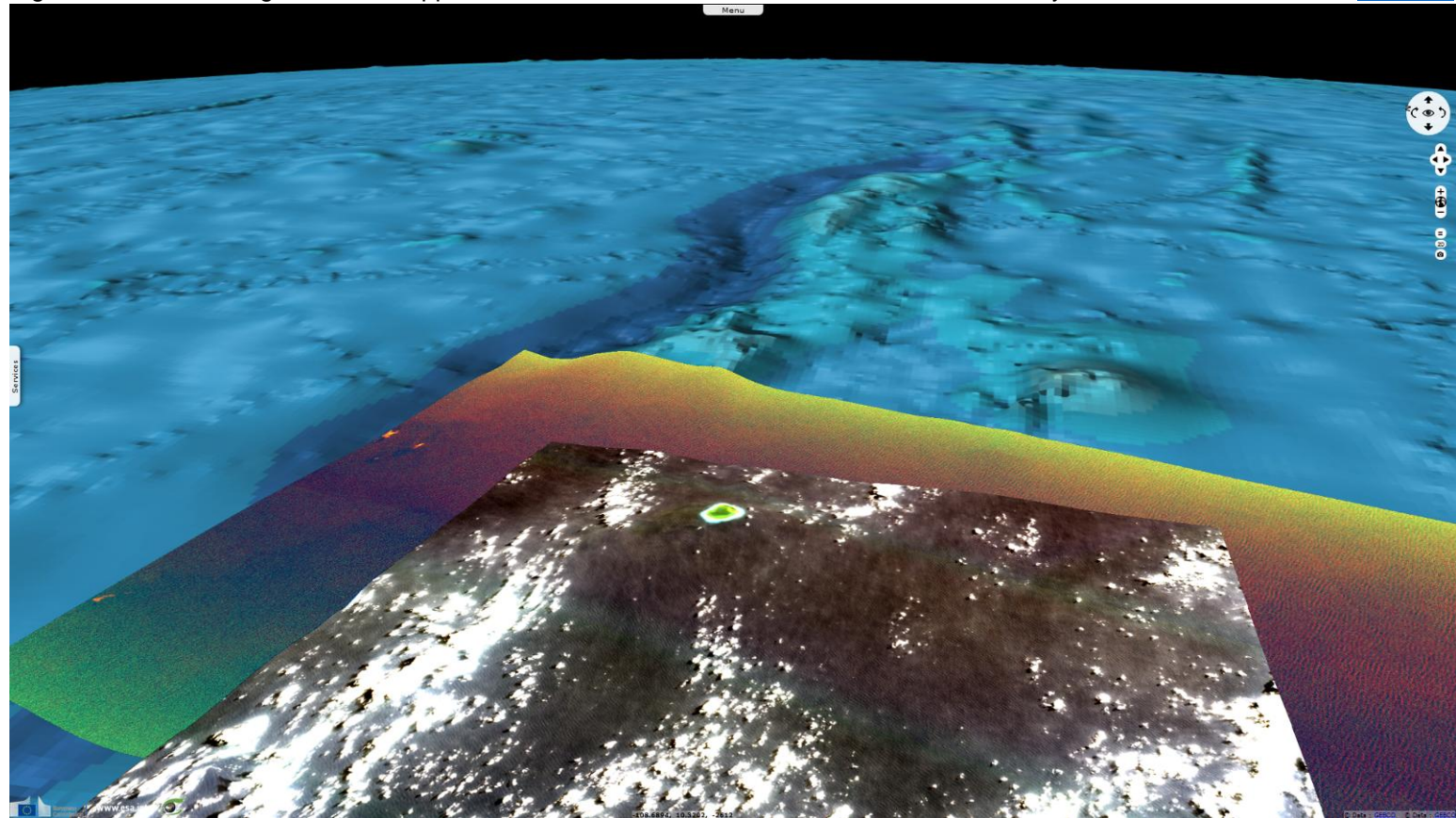


Fig. 2 - S1 image - VV component (left) and VV-VH-NDI(VV,VH) (right).

[left](#) [right](#)

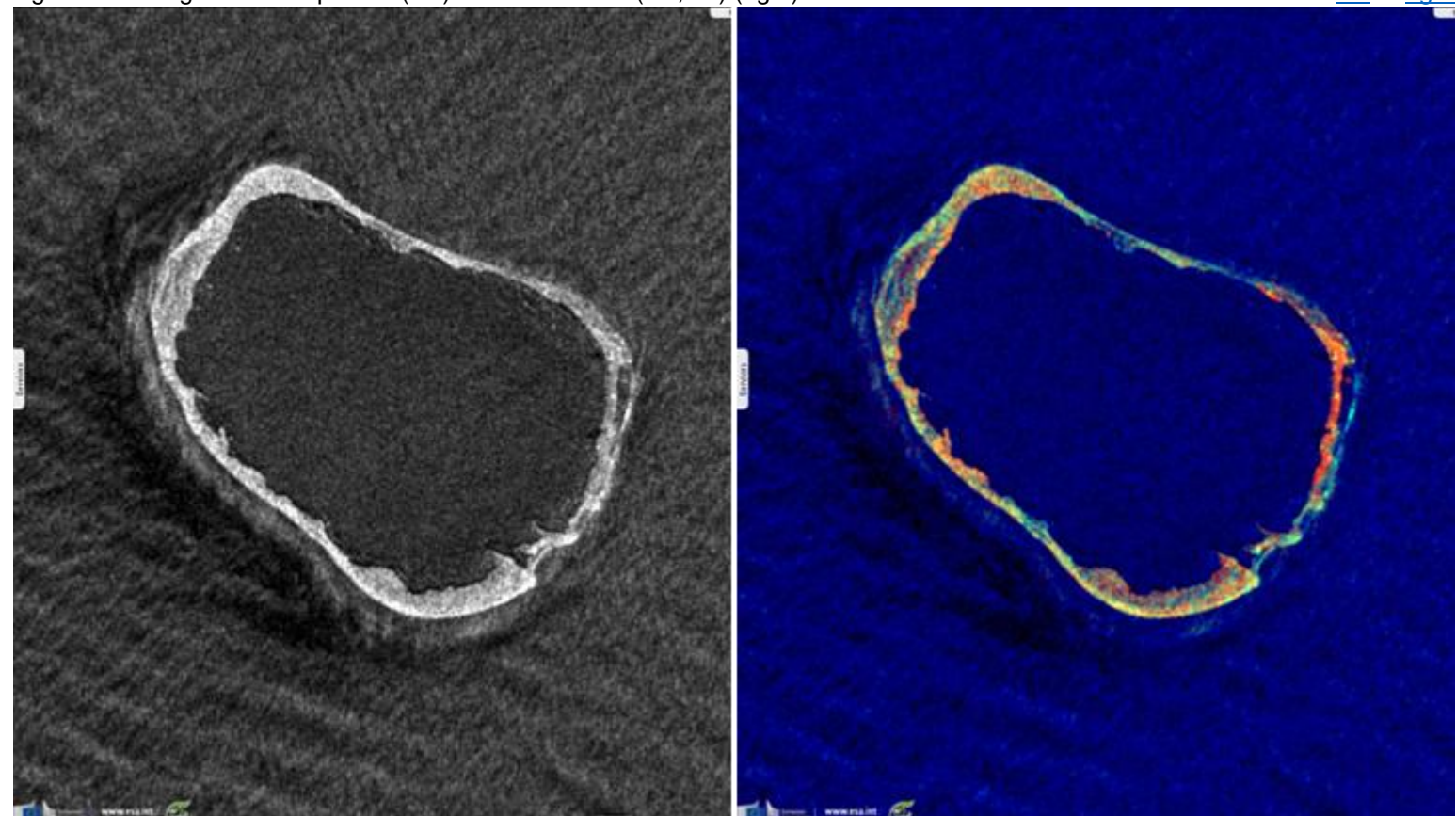
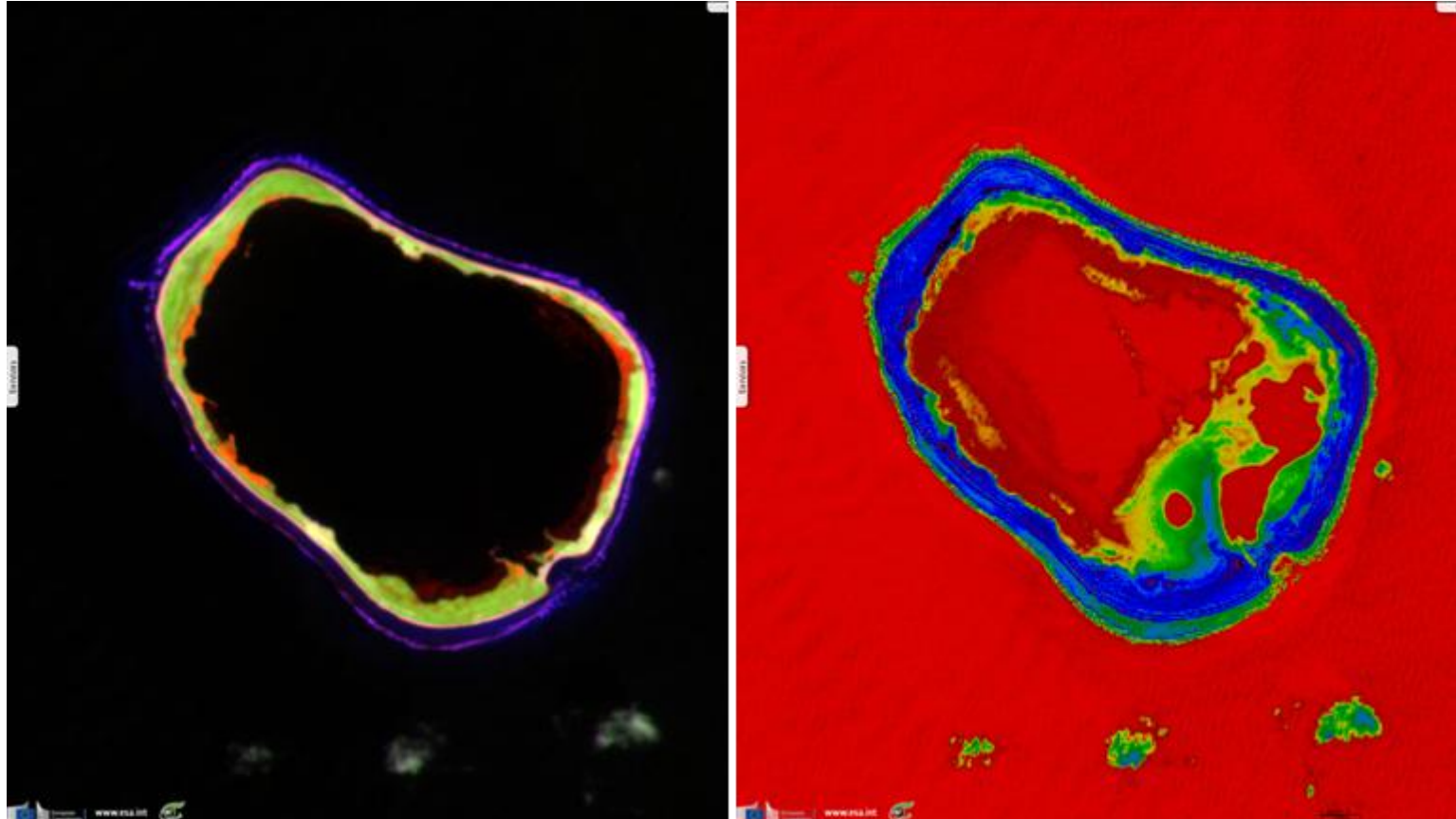


Fig. 3 - S2 image zoomed on Clipperton Island which includes a 4 km<sup>2</sup> freshwater lagoon - 4-3-2 colour composite. [left](#) [right](#)



Fig. 4 - S2 image - 8-11-2 colour composite (left) - Normalised Difference Index between bands 2 and 5 (right). [left](#) [right](#)



*The views expressed herein can in no way be taken to reflect the official opinion of the European Space Agency or the European Union.*

More on European Commission space:								
More on ESA:				<a href="#">S-1 website</a>	<a href="#">S-2 website</a>	<a href="#">S-3 website</a>		
More on Copernicus programme:				<a href="#">SciHub portal</a>	<a href="#">Cophub portal</a>	<a href="#">Inthub portal</a>	<a href="#">Colhub portal</a>	
More on VisioTerra:				<a href="#">Sentinel Vision Portal</a>	<a href="#">Envisat+ERS portal</a>	<a href="#">Swarm+GOCE portal</a>	<a href="#">CryoSat portal</a>	<a href="#">Proba-V portal</a>