

Spotlight on Hong-Kong

Sentinel-2 MSI L2A acquired on 25 January 2019 at 03:00:11 UTC

Sentinel-1 CSAR IW acquired on 26 March 2019 at 10:33:16 UTC

Sentinel-1 CSAR IW acquired on 07 April 2019 at 10:33:16 UTC

Sentinel-1 CSAR IW acquired on 19 April 2019 at 10:33:16 UTC

Author(s): Sentinel Vision team, VisioTerra, France - svp@visioterra.fr

Keyword(s): Coastal, urban, ship security, marine traffic, China

[2D Layerstack](#)

Fig. 1 - S1 (26.03.2019; 07 & 19.04.2019) - vv,vh,ndi(vh,vv) colour composite - Hong-Kong & its small neighbor Macao both lie south of China [2D view](#)

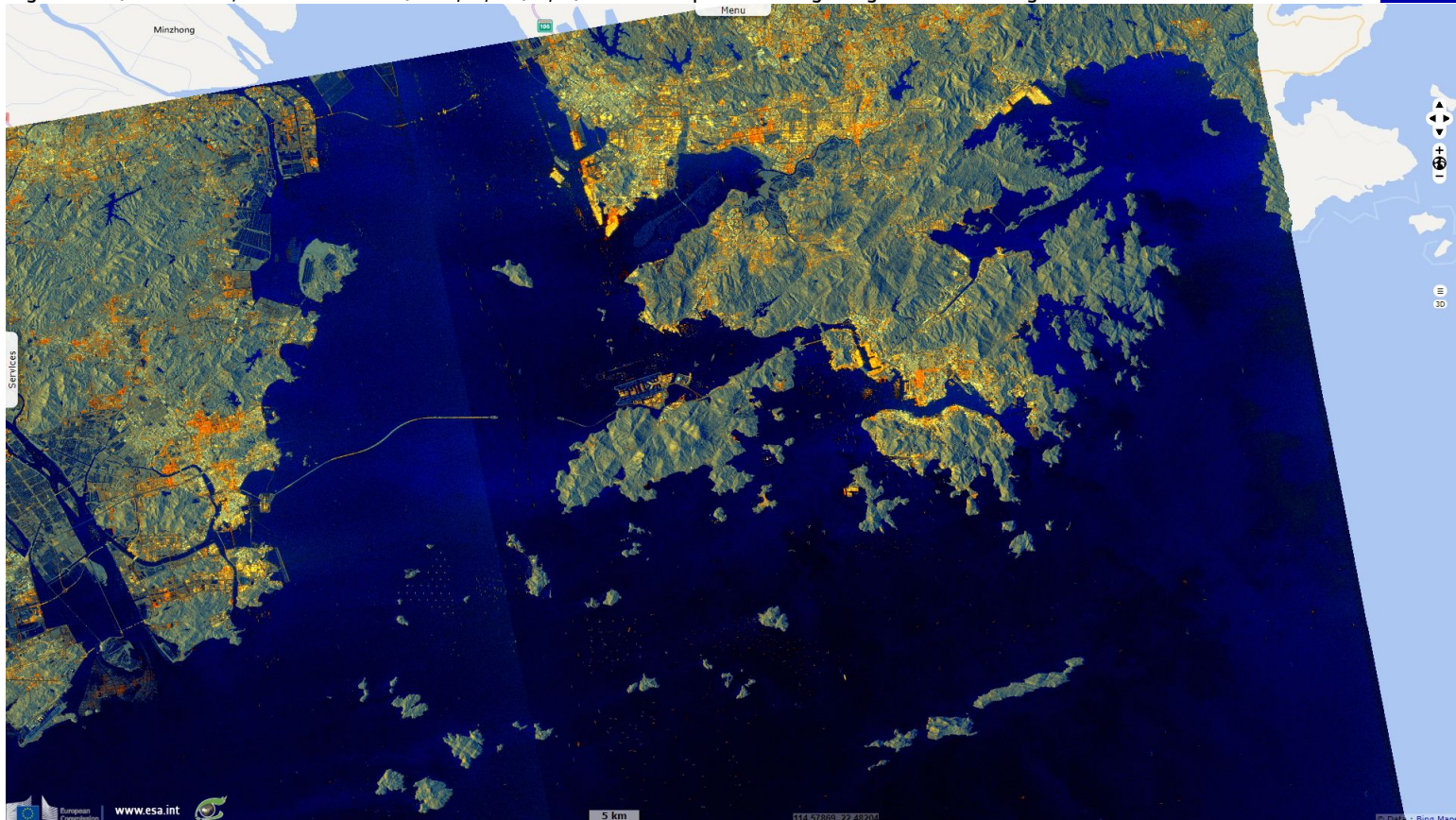


Fig. 2 - S2 (25.01.2019) - 12,11,8 colour composite - Hong Kong became a colony of the British Empire in 1842, until its lease ended in 1997. [2D view](#)

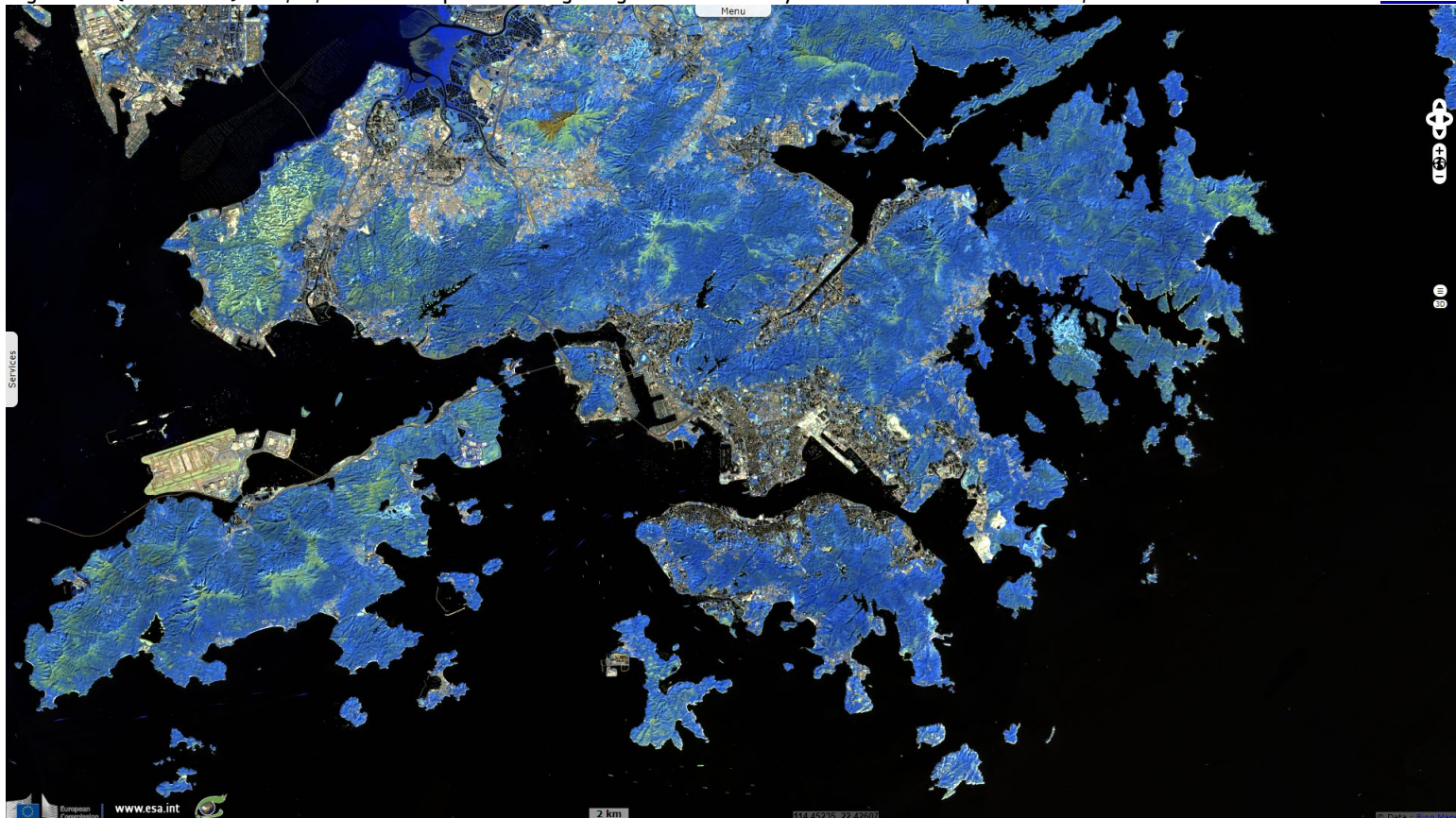














Fig. 3 - vv,vh,vv colour composite - Hong Kong has become one of the world's most significant financial centres and commercial ports. [2D view](#)



Fig. 4 - 4,3,2 natural colour - After the transfer, China assured it would guarantee Hong Kong's economic and political systems for 50 years. [3D view](#)



*The views expressed herein can in no way be taken to reflect the official opinion of the European Space Agency or the European Union.
Contains modified Copernicus Sentinel data 2019, processed by VisioTerra.*

More on European Commission space:						
More on ESA:				S-1 website	S-2 website	S-3 website
More on Copernicus program:				SciHub portal	Cophub portal	Inthub portal
More on VisioTerra:				Sentinel Vision Portal	Envisat+ERS portal	Swarm+GOCE portal
				CryoSat portal		