

Hundreds of wildfires in Greater Kabylia region, Algeria

Sentinel-2 MSI acquired on 28 June 2020 at 10:25:59 UTC

Sentinel-2 MSI acquired on 03 July 2020 at 10:30:31 UTC

...

Sentinel-2 MSI acquired on 07 August 2020 at 10:25:59 UTC

Author(s): Sentinel Vision team, VisioTerra, France - svp@visioterra.fr

Keyword(s): Wildfires, emergency, agriculture, vegetation, drought, coastal, Algeria



[2D Layerstack](#)

Fig. 1 - S2 (28.06.2020) - Situation by the end of June.

[2D view](#)

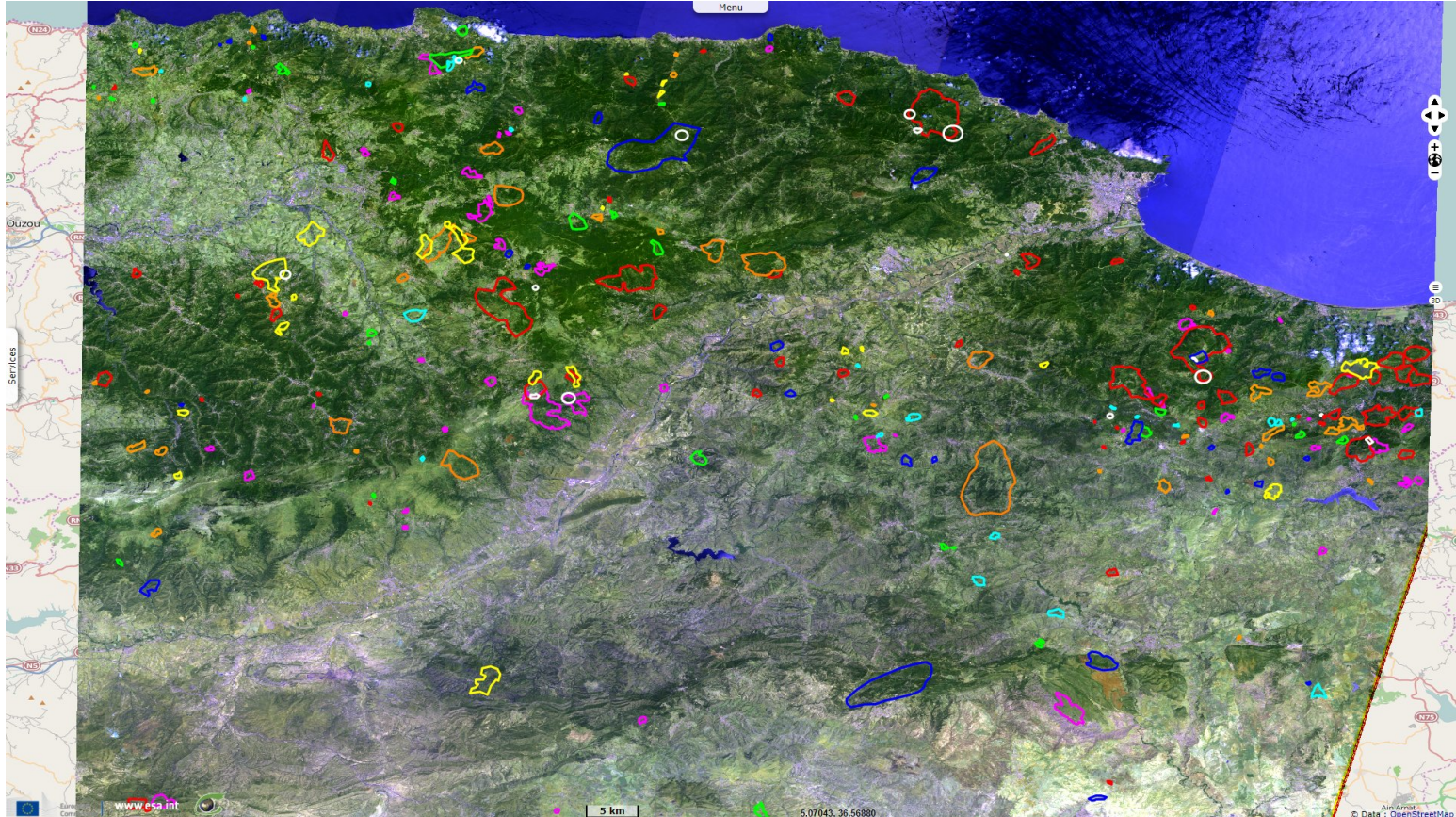
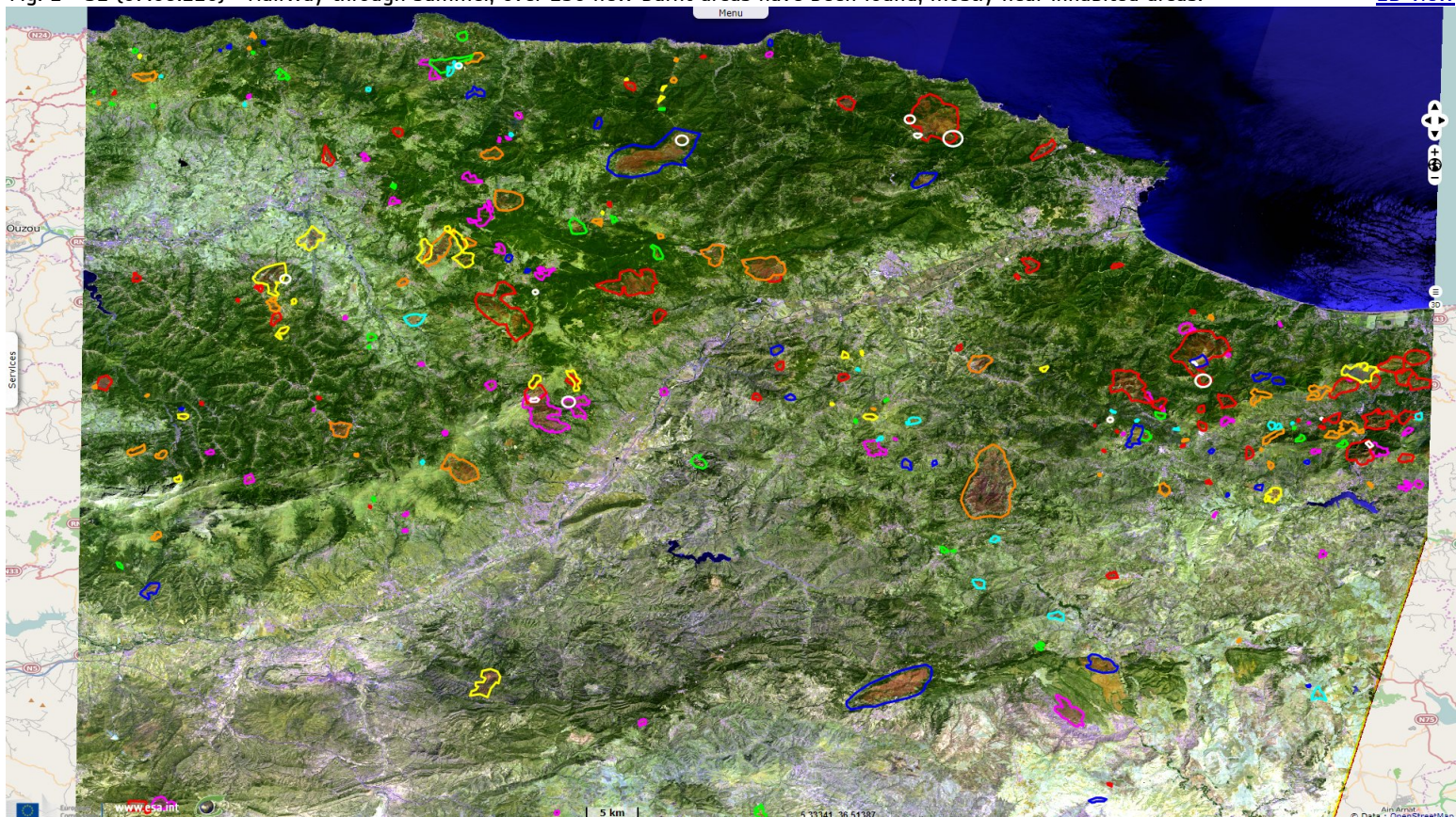


Fig. 2 - S2 (07.08.220) - Halfway through summer, over 250 new burnt areas have been found, mostly near inhabited areas.

[2D view](#)



Few large wildfires opened the season, followed later by many smaller. Since the end of July, there are still many fires but they also grew in size.

Fig. 3 - S2 - Burnt areas evidenced by a multidecade processing.

[2D animation](#) [2D animation](#)

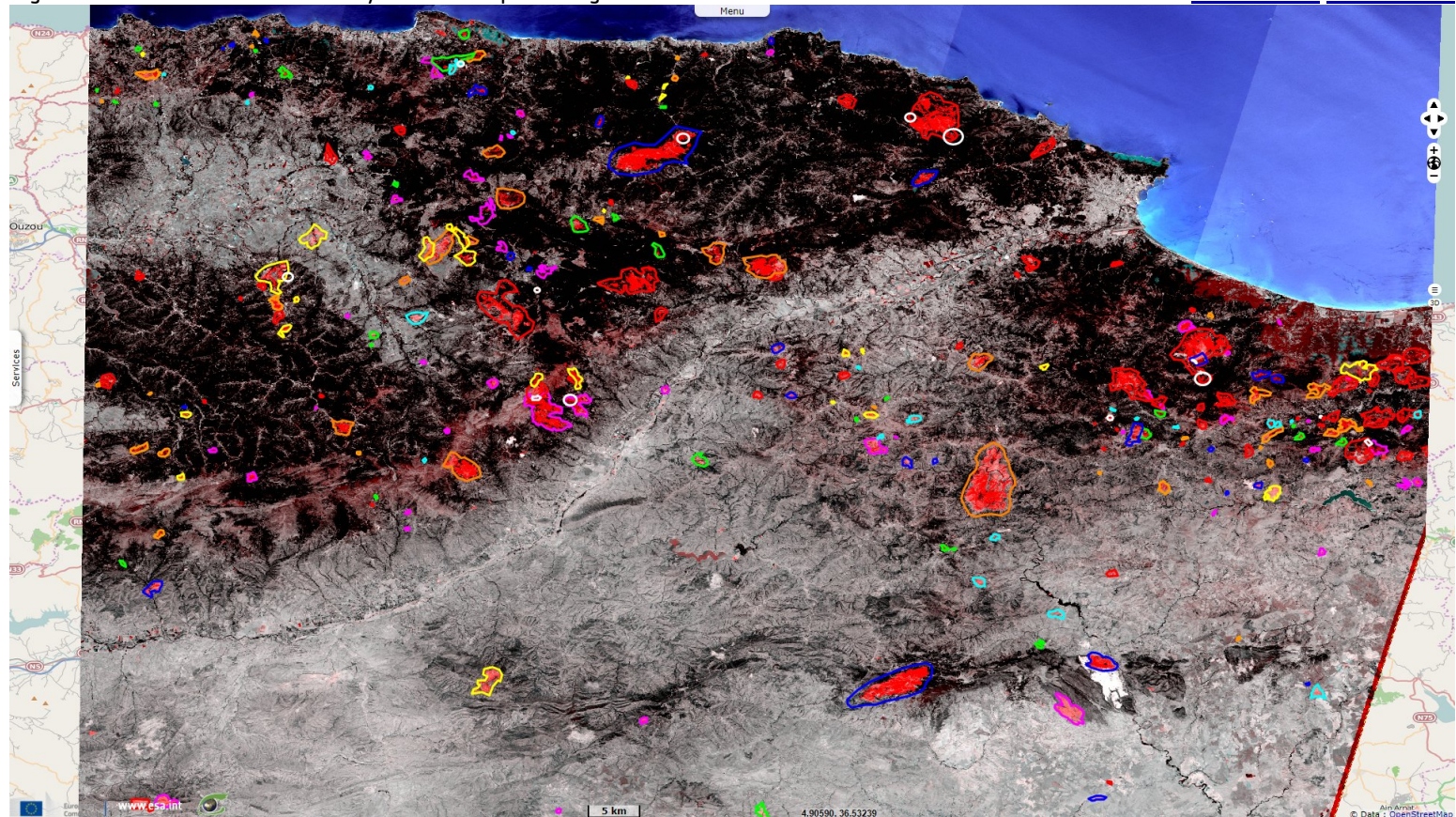
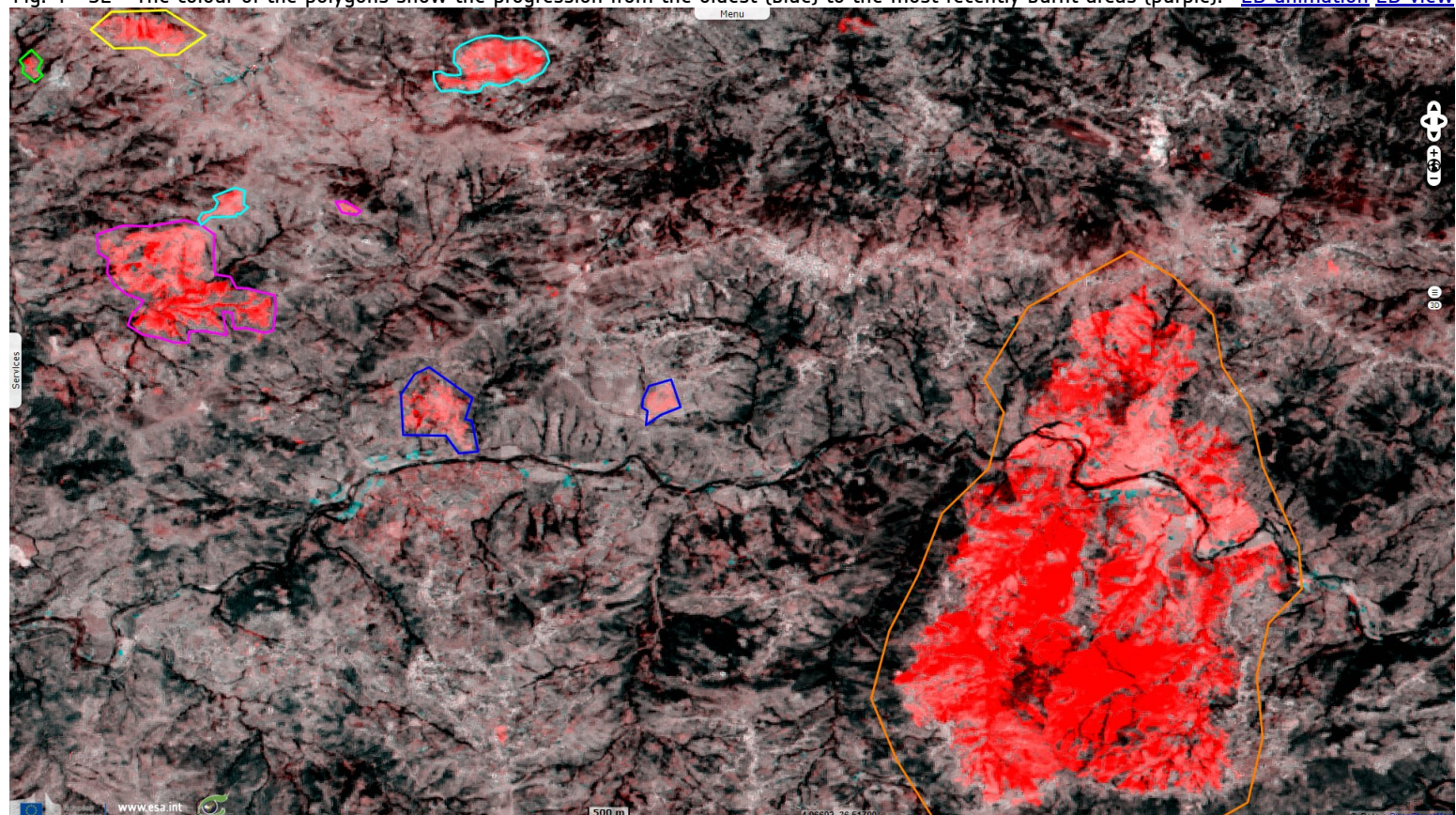
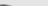





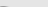







Fig. 4 - S2 - The colour of the polygons show the progression from the oldest (blue) to the most recently burnt areas (purple). [2D animation](#) [2D view](#)



*The views expressed herein can in no way be taken to reflect the official opinion of the European Space Agency or the European Union.
Contains modified Copernicus Sentinel data 2020, processed by VisioTerra.*

More on European Commission space:							
More on ESA:				S-1 website	S-2 website	S-3 website	
More on Copernicus program:				Scihub_portal	Cophub_portal	Inthub_portal	Colhub_portal
More on VisioTerra:				Sentinel Vision Portal	Envisat+ERS_portal	Swarm+GOCE_portal	CryoSat_portal