

# Flower bloom for Valentine's Day in Antelope Valley California Poppy Reserve, USA

Sentinel-2 MSI acquired on **04 March 2020** at 18:32:39 UTC

...

Sentinel-2 MSI acquired on **08 May 2020** at 18:29:21 UTC

Author(s): Sentinel Vision team, VisioTerra, France - [svp@visioterra.fr](mailto:svp@visioterra.fr)

Keyword(s): Land, vegetation, natural reserve, California, United States, USA

[2D Layerstack](#)

Fig. 1 - S2 (04.03.2020) - Antelope Valley California Poppy Reserve is a state-protected reserve of California, arboring very consistent blooms. [3D view](#)

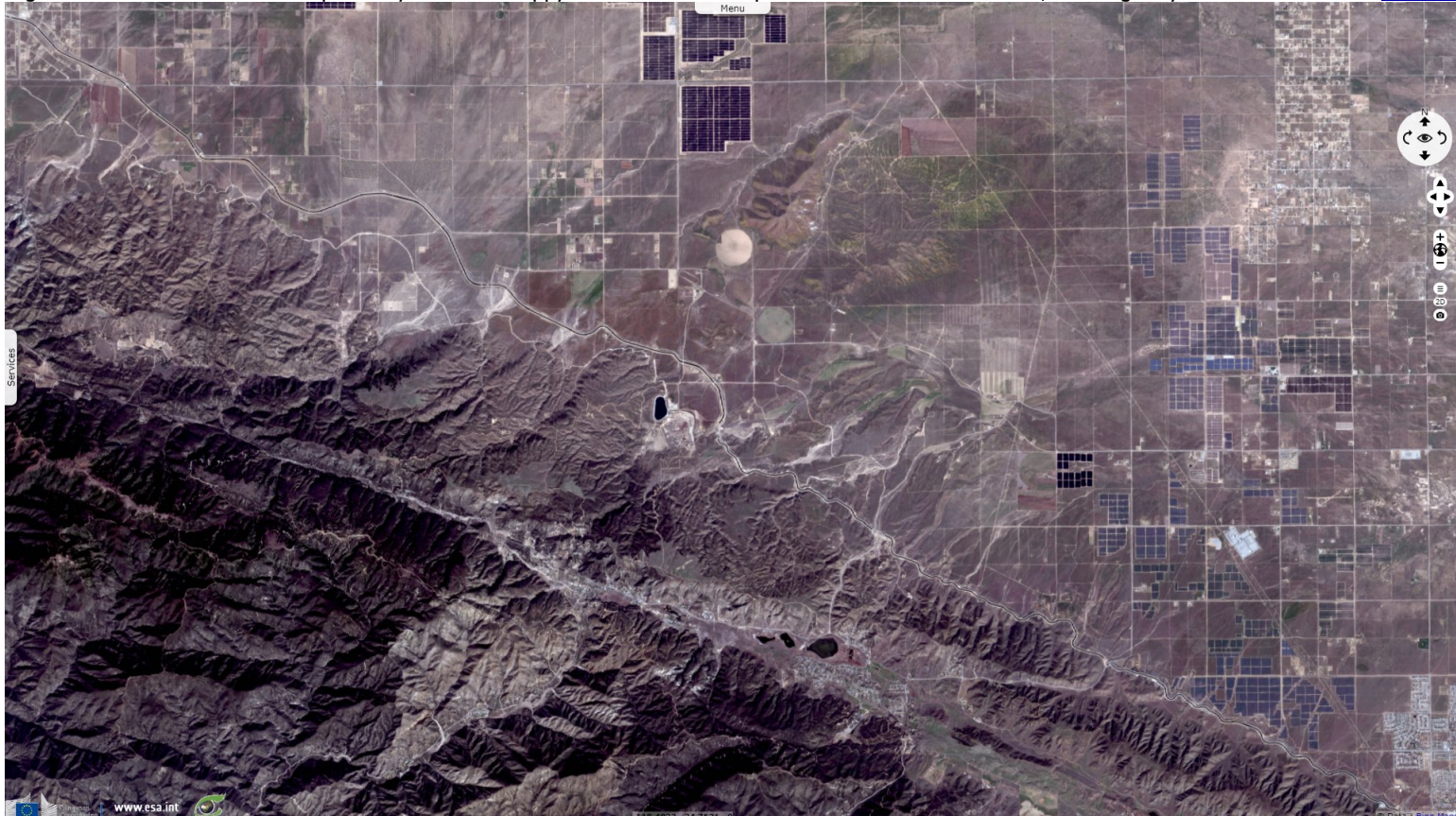


Fig. 2 - S2 (03.04.2020) - The reserve is located in Antelope Valley in northern Los Angeles County, 24 km west of Lancaster.

[3D view](#)

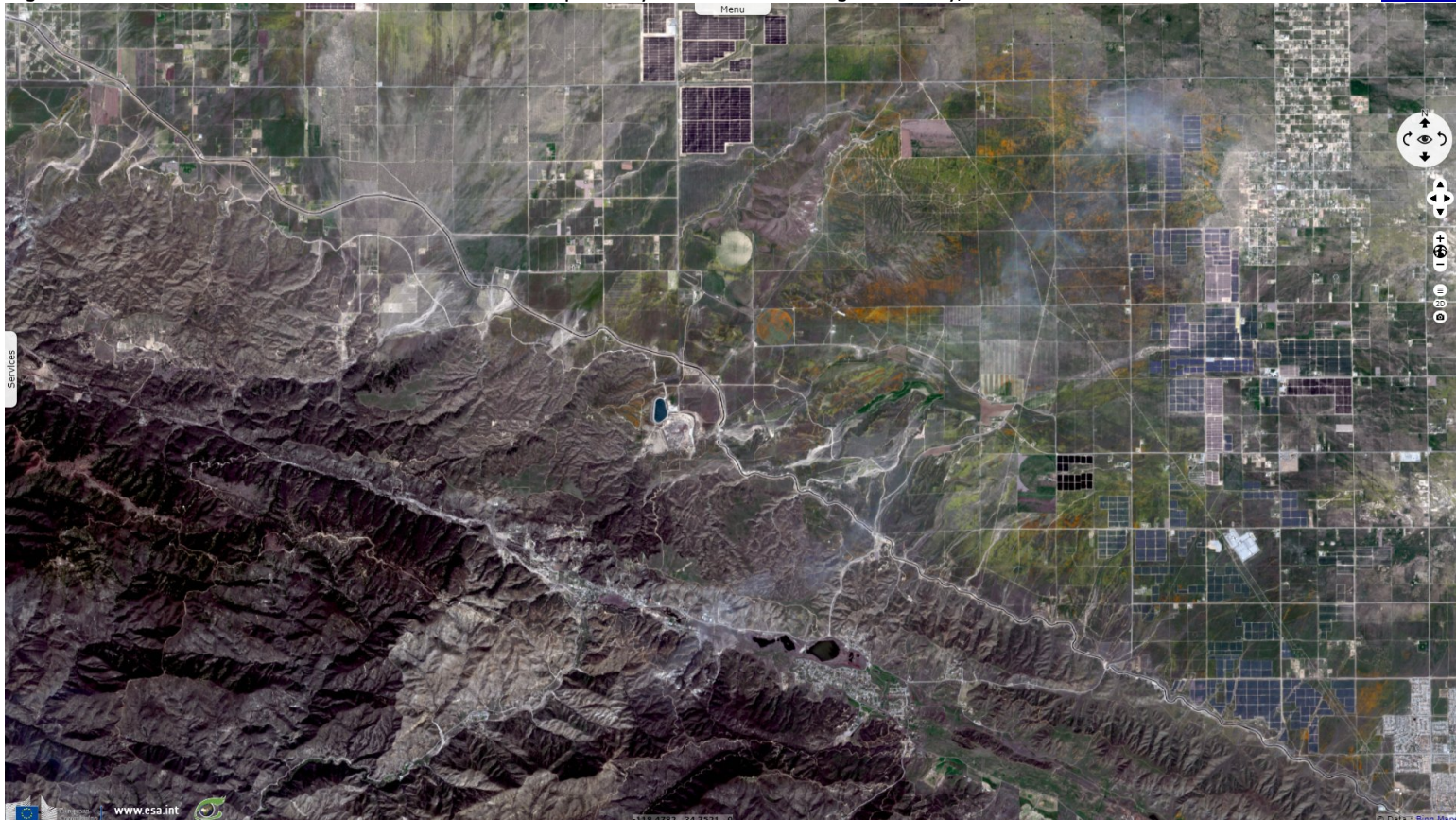




Fig. 3 - S2 (23 & 28.04.2020) - The reserve is at an elevation ranging from 790 m to 910 m above sea level, in the Mojave Desert climate zone. [3D view](#)

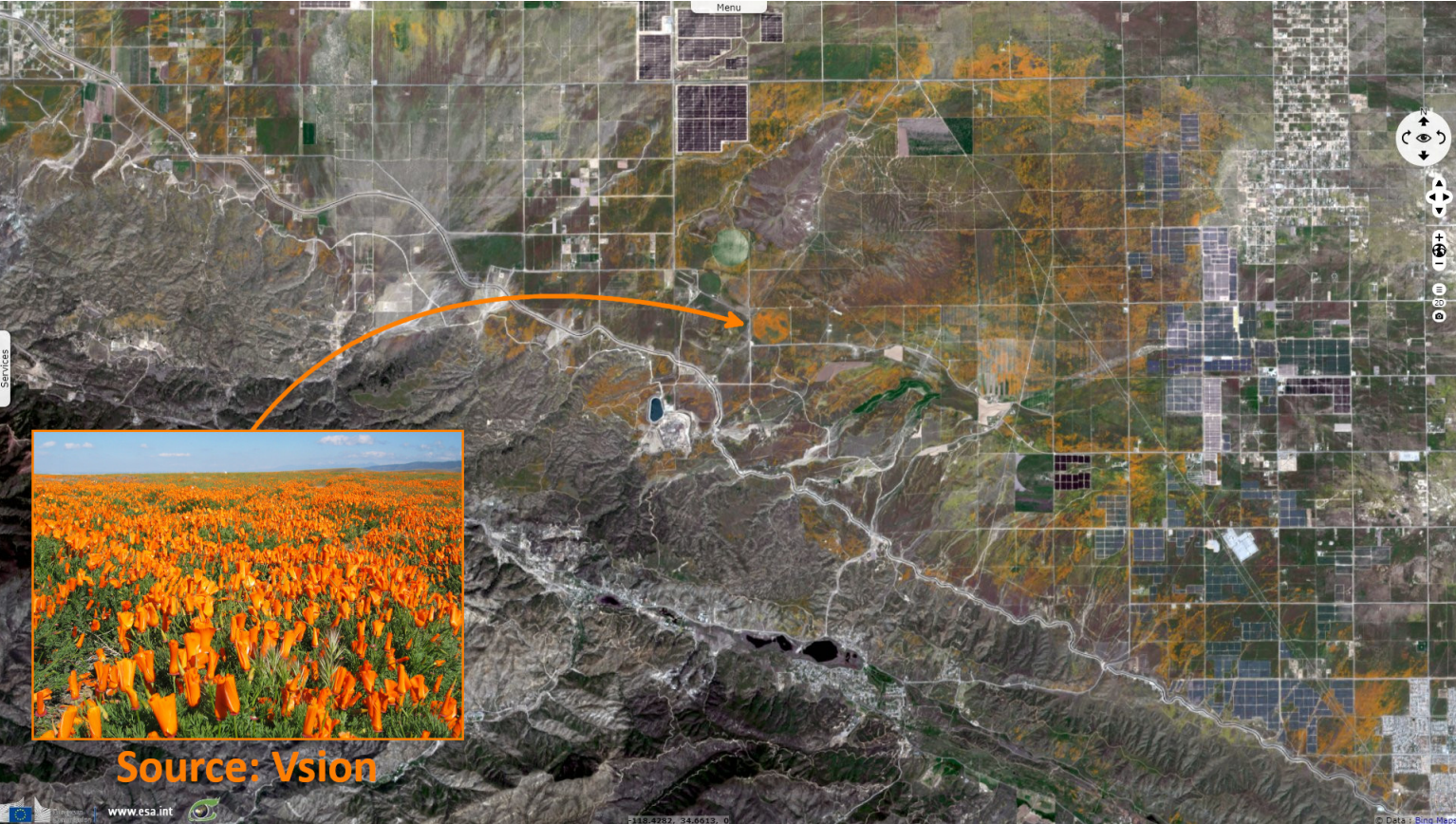


Fig. 4 - S2 (08.05.2020) - Dependent on the amount of rainfall, the intense blooming season for the California Poppy usually falls from mid-February to mid-May. [3D view](#)



*The views expressed herein can in no way be taken to reflect the official opinion of the European Space Agency or the European Union.  
Contains modified Copernicus Sentinel data 2023, processed by VisioTerra.*

More on European Commission space:						
More on ESA:				<a href="#">S-1 website</a>	<a href="#">S-2 website</a>	<a href="#">S-3 website</a>
More on Copernicus program:				<a href="#">SciHub portal</a>	<a href="#">Cophub portal</a>	<a href="#">Inthub portal</a> <a href="#">Colhub portal</a>
More on VisioTerra:				<a href="#">Sentinel Vision Portal</a>	<a href="#">Envisat+ERS portal</a>	<a href="#">Swarm+GOCE portal</a> <a href="#">CryoSat portal</a>



