

Great Bear Lake, straddling the Arctic Circle in Canada

Sentinel-1 CSAR EW acquired on 17 February 2023 at 14:49:24 UTC
Sentinel-1 CSAR EW acquired on 19 February 2023 at 14:32:58 UTC
Sentinel-2 MSI acquired on 04 July 2023 at 19:58:59 UTC
Sentinel-2 MSI acquired on 08 July 2023 at 19:39:09 UTC
Sentinel-1 CSAR EW acquired on 16 August 2023 at 14:49:32 UTC
Sentinel-1 CSAR EW acquired on 18 August 2023 at 14:33:06 UTC

Author(s): Sentinel Vision team, VisioTerra, France - svp@visioterra.fr

Keyword(s): Great Bear Lake, Northwest Territories, Canada, lake, water, polar, North, Arctic



[2D Layerstack](#)

Fig. 1 - S2 (04-08.07.2023) - The Great Bear Lake is known to be the eighth-largest lake in the world, located in Northwest Territories, Canada.

[2D view](#)

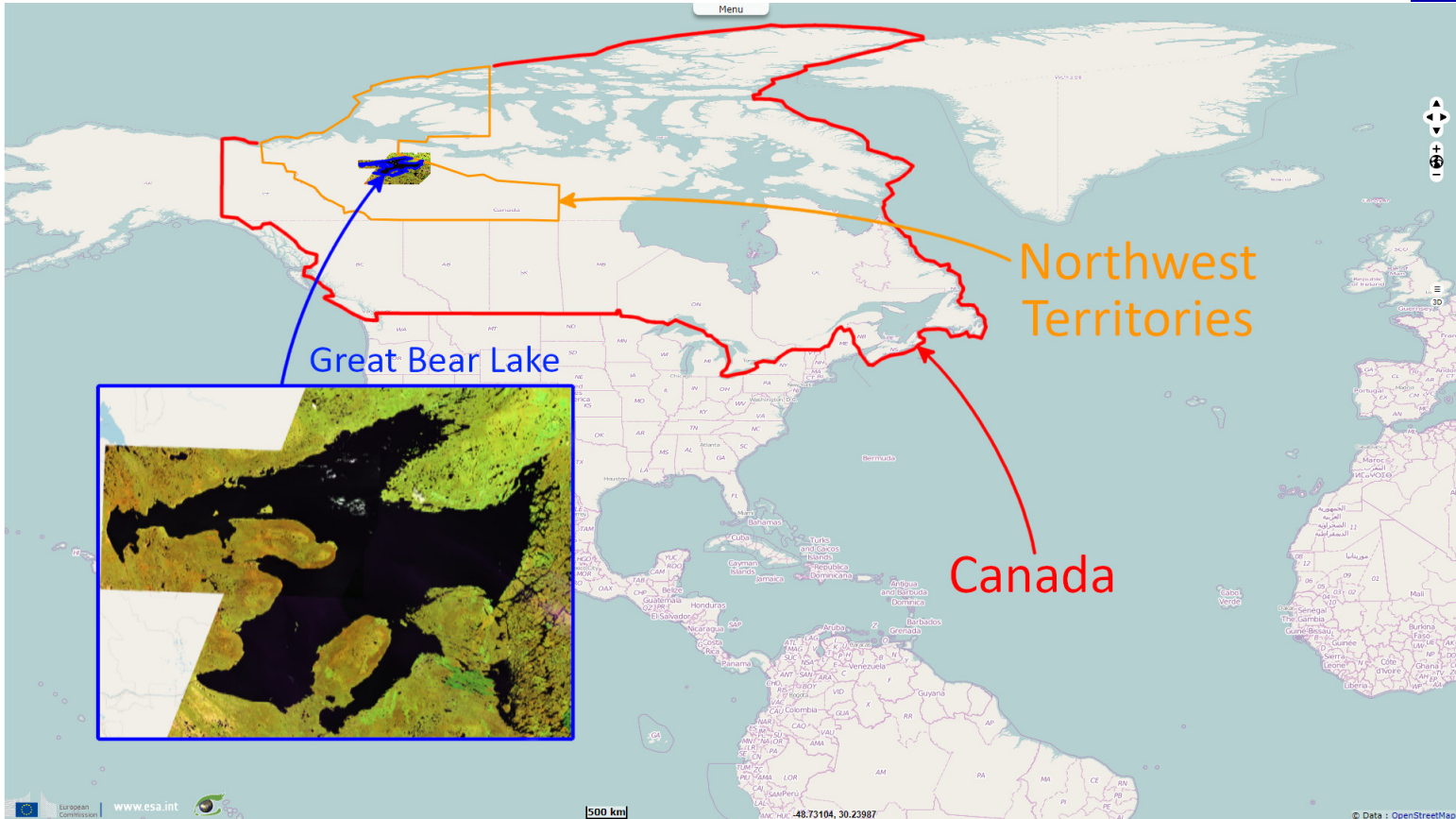
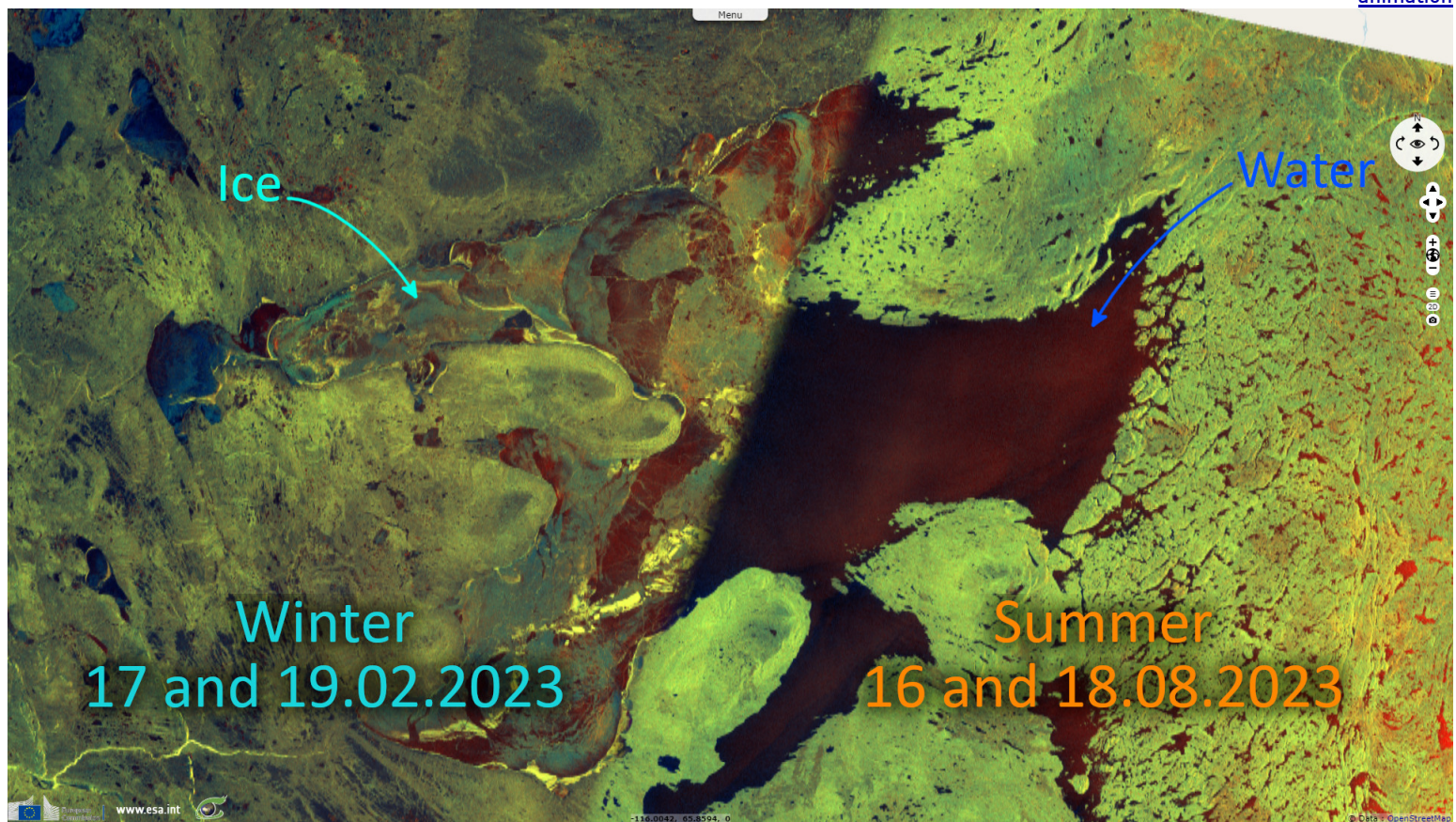


Fig. 2 - S1 (17-19.02.2023, 16-18.08.2023) - From January to March, the surface of the lake is completely frozen, representing 31.153 km² of ice. [3D animation](#)



The views expressed herein can in no way be taken to reflect the official opinion of the European Space Agency or the European Union.
 Contains modified Copernicus Sentinel data 2023, processed by VisioTerra.

More on European Commission space:							
More on ESA:				S-1 website	S-2 website	S-3 website	
More on Copernicus program:				SciHub portal	CopHub portal	Inthub portal	Colhub portal
More on VisioTerra:				Sentinel Vision Portal	Envisat+ERS portal	Swarm+GOCE portal	CryoSat portal



Funded by the EU and ESA

SED-1361-SentinelVision

