

Past and future of Aboriginal land in Gove Peninsula, Northern Territory, Australia

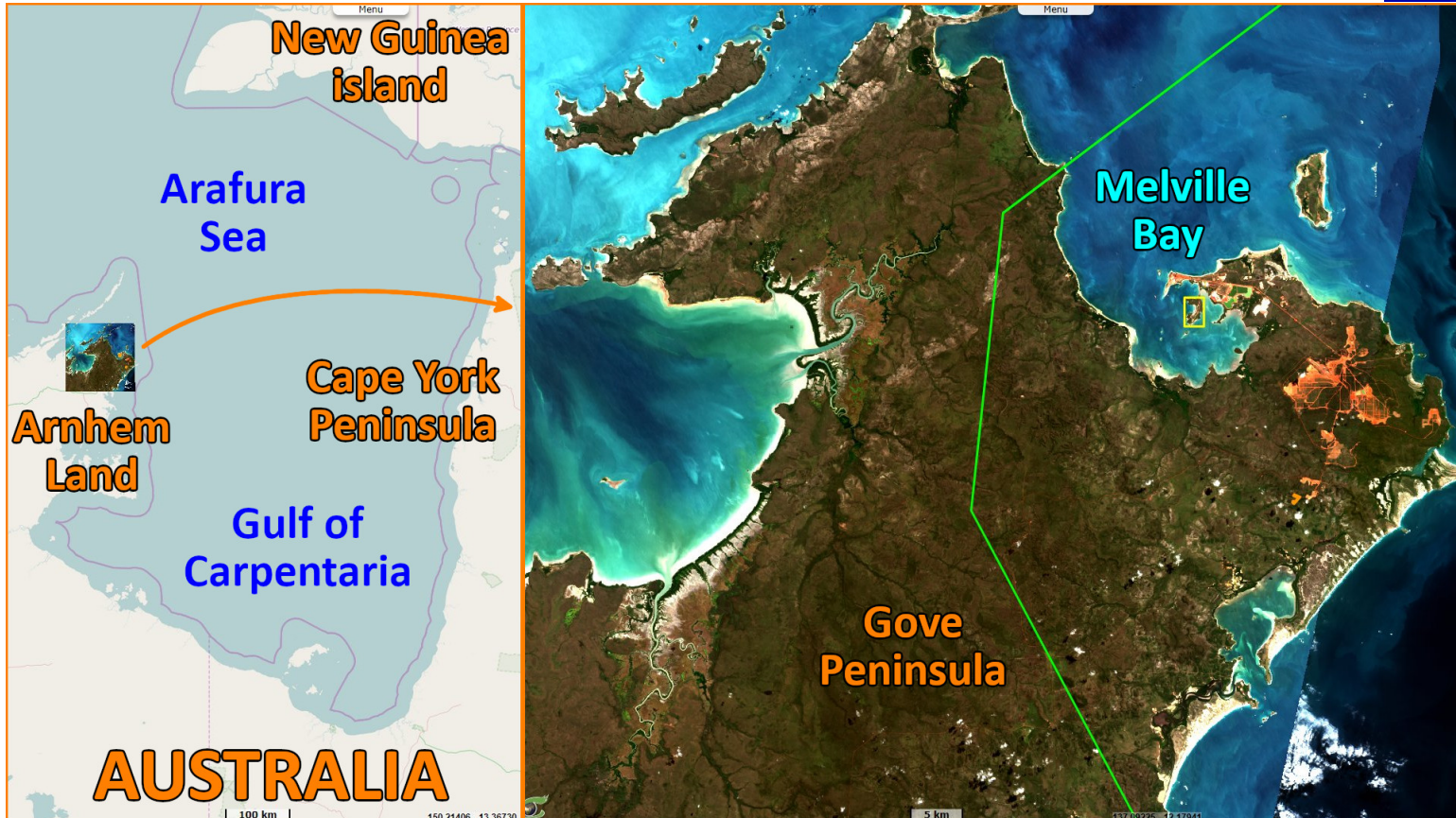
Landsat TM acquired on 22 August 1987 at 00:24:04 UTC
Sentinel-2 MSI acquired on 23 July 2016 at 01:17:32 UTC
Sentinel-2 MSI acquired on 30 July 2016 at 01:07:32 UTC
Sentinel-2 MSI acquired on 28 May 2023 at 01:17:31 UTC
Sentinel-2 MSI acquired on 19 July 2023 at 01:07:29 UTC

Author(s): Sentinel Vision team, VisioTerra, France - svp@visioterra.fr

Keyword(s): Land, coastal, natural resources, aluminium mine, space centre, Australia

Fig. 1 - S2 (22.08.1987; 30.07.2016; 19.07.2023) - Dhimurru indigenous protected area is located in Gove Peninsula, Arnhem Land, Northern Territory.

[2D view](#)



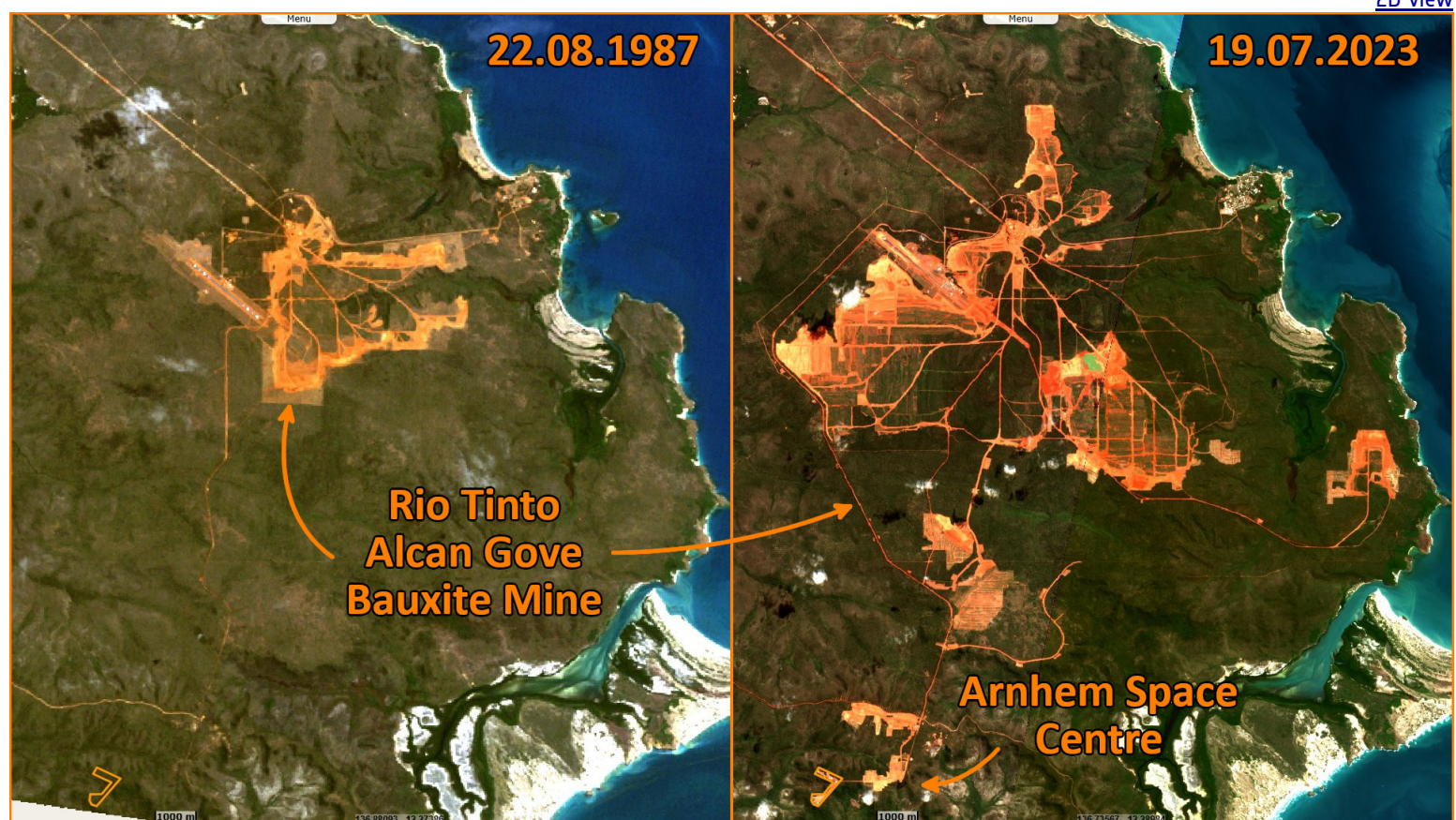
Yunupingu, chief of the Gumatj clan and historic leader of the aboriginal civil rights movement, died in April 2023. By preserving its identity, Arnhem Land has become a cultural and political bastion for the Aboriginal Australians, particularly in the fight for territorial rights. In Gunyangara, the Gumatj clan obtained management of its own territory like other clans after them, and set up direct access to the land and local reinvestment in a closed loop.

Fig. 2 - S2 (22.08.1987; 30.07.2016; 19.07.2023) - The Gumatj clan lives on Gunyangara island, near the city of Nhulunbuy. [2D view](#)



There is no official recognition of aboriginal people in Australia like the First Nations in Canada or New Zealand. Proposed on 14 October 2023, the referendum on extending Aboriginal rights and enshrining them in the Constitution would have obliged the State and Parliament to consult Aboriginal communities on legislation that could have an impact on them, via a representative body. Australian voters voted against by a large majority of just over 60% nationally and in each of the six states.

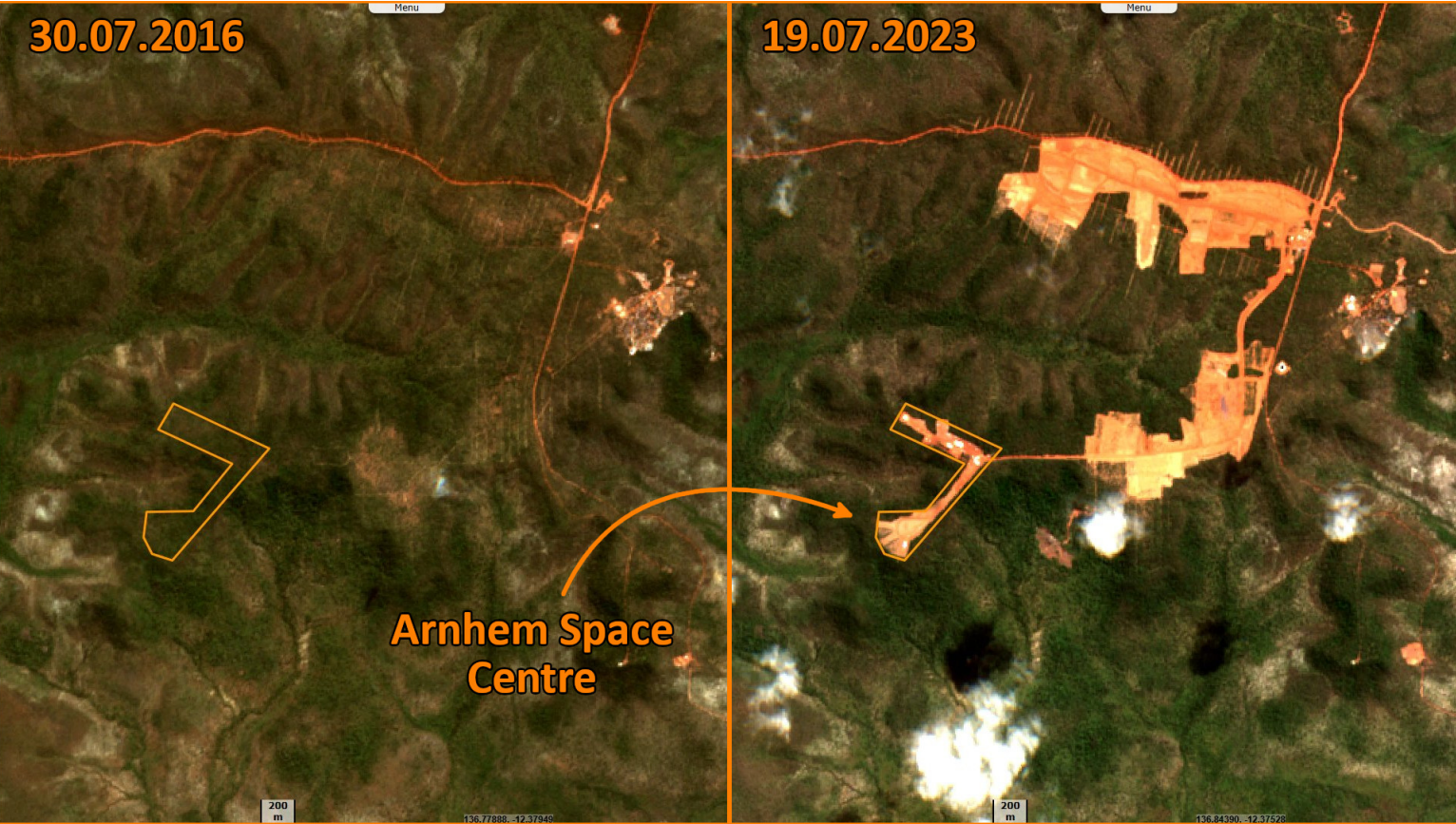
Fig. 3 - S2 (22.08.1987; 19.07.2023) - Rio Tinto has mined and refined bauxite for decades nearby aboriginal people in the Gove Peninsula. [2D view](#) [2D view](#)



Nhulunbuy's biggest employer, a now mothballed Rio Tinto alumina refinery, shut its doors and bid farewell to hundreds of staff in 2013. Rio Tinto runs a bauxite mine near the town, but the company has publicly flagged that the operation will be ceased by 2030 – if not sooner.













Fig. 4 - S2 [30.07.2016; 19.07.2023] - The recently built Arnhem Space Centre, nearby Nhulunbuy bauxite mine.

[2D view](#) [2D view](#)



NASA wrapped up a launch mission in the region located at 12° of latitude (to compare with 26° latitude for the southern tip of Texas), shooting three suborbital sounding rockets spaceward from the Arnhem Space Centre, about 40 kilometres from the town.

*The views expressed herein can in no way be taken to reflect the official opinion of the European Space Agency or the European Union.
Contains modified Copernicus Sentinel data 2023, processed by VisioTerra.*

| | | | | | | |
|------------------------------------|---|---|---|--|------------------------------------|--|
| More on European Commission space: |  |  |  | | | |
| More on ESA: |  |  |  | S-1 website | S-2 website | S-3 website |
| More on Copernicus program: |  |  |  | SciHub portal | Cophub portal | Inthub portal Colhub portal |
| More on VisioTerra: |  |  |  | Sentinel Vision Portal | Envisat+ERS portal | Swarm+GOCE portal CryoSat portal |