

Brahmaputra river floods Assam state, east of India

Sentinel-1 CSAR IW acquired on 04 June 2021 at 23:55:28 UTC

...

Sentinel-1 CSAR IW acquired on 27 August 2021 at 23:55:33 UTC

Sentinel-1 CSAR IW acquired on 29 August 2021 from 23:38:42 to 23:39:07 UTC

Sentinel-1 CSAR IW acquired on 01 September 2021 at 11:57:08 UTC

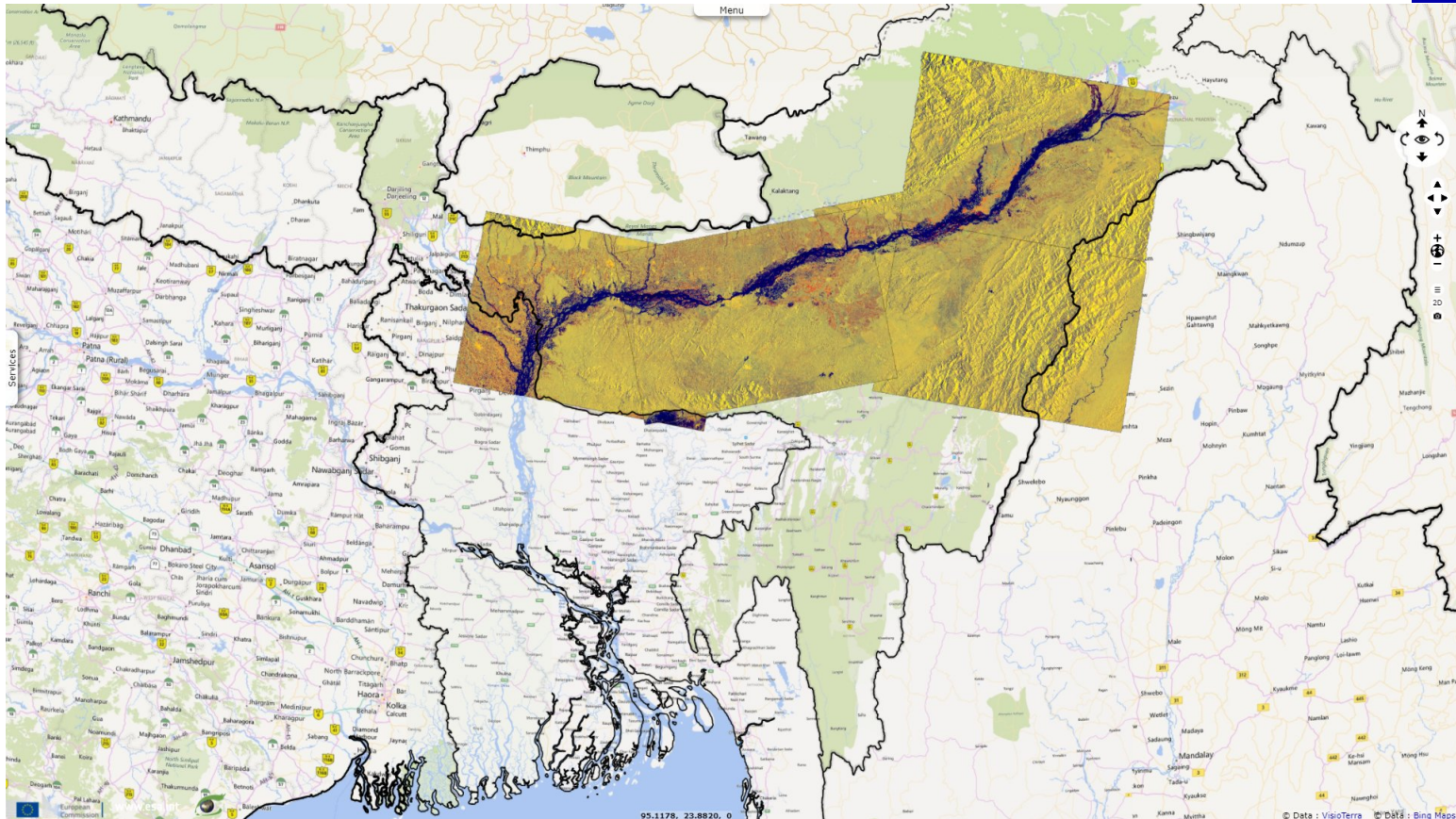
Author(s): Sentinel Vision team, VisioTerra, France - svp@visioterra.fr

Keyword(s): Emergency, precipitations, natural disaster, river, hydrology, urban planning, India



[3D Layerstack](#)

Fig. 1 - S1 (27 & 29.08.2021, 01.09.2021) - Assam state lies is located on both sides of the Brahmaputra river (here flooding) in north-east India. [3D view](#)



The Assam State Disaster Management Authority said a total of 258,191 people have now been affected by the floods across 732 villages in 16 districts.

Fig. 2 - S1 (04, 06 & 11.06.2021) - View before the flood which forced the authorities to run 105 relief camps and distribution centres in 14 districts.

[3D view](#)

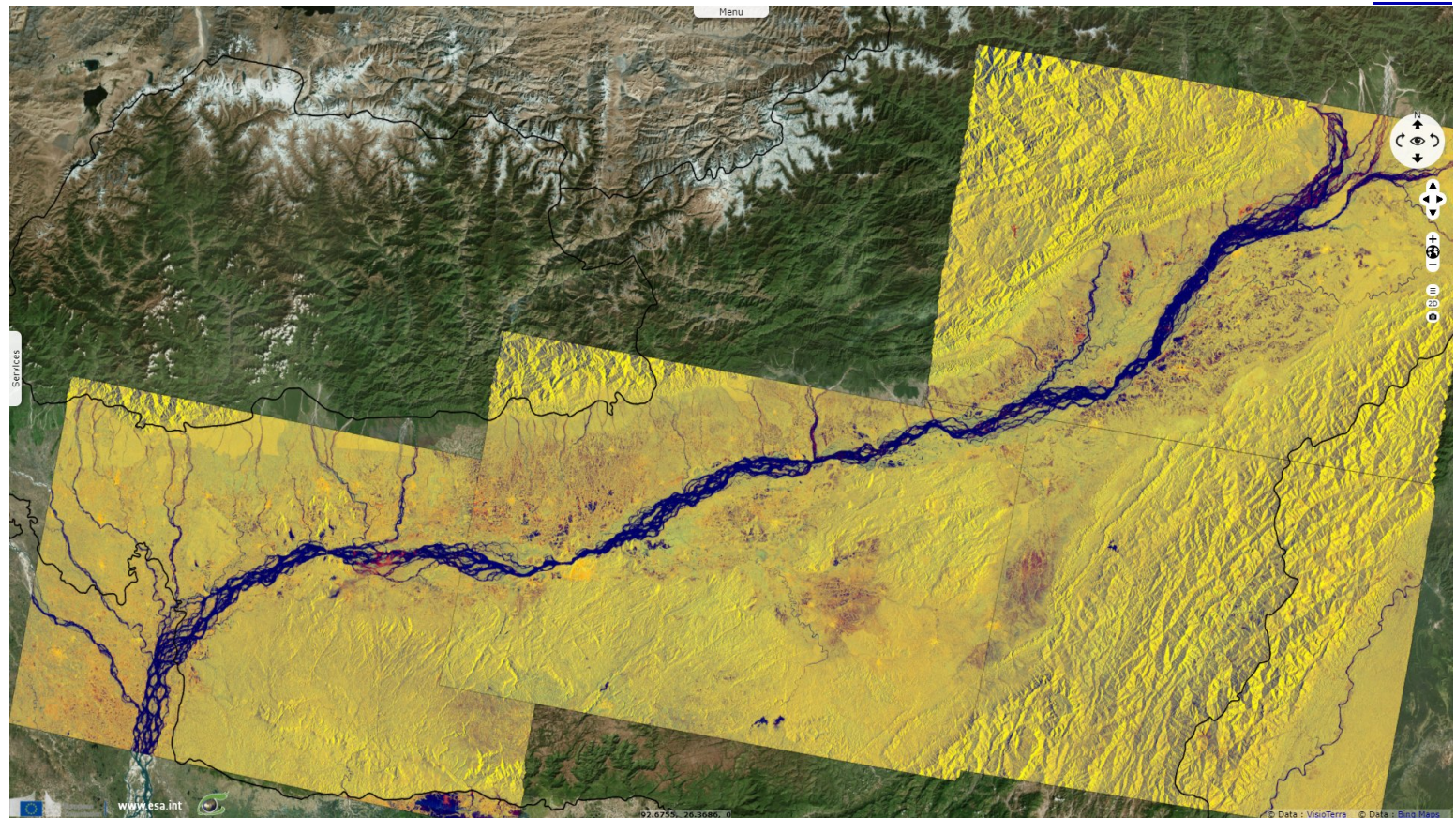


Fig. 3 - S1 (27 & 29.08.2021, 01.09.2021) - Same view during the flood. 1278 villages were under water and 400 km² of crop areas have been damaged.

[3D view](#)

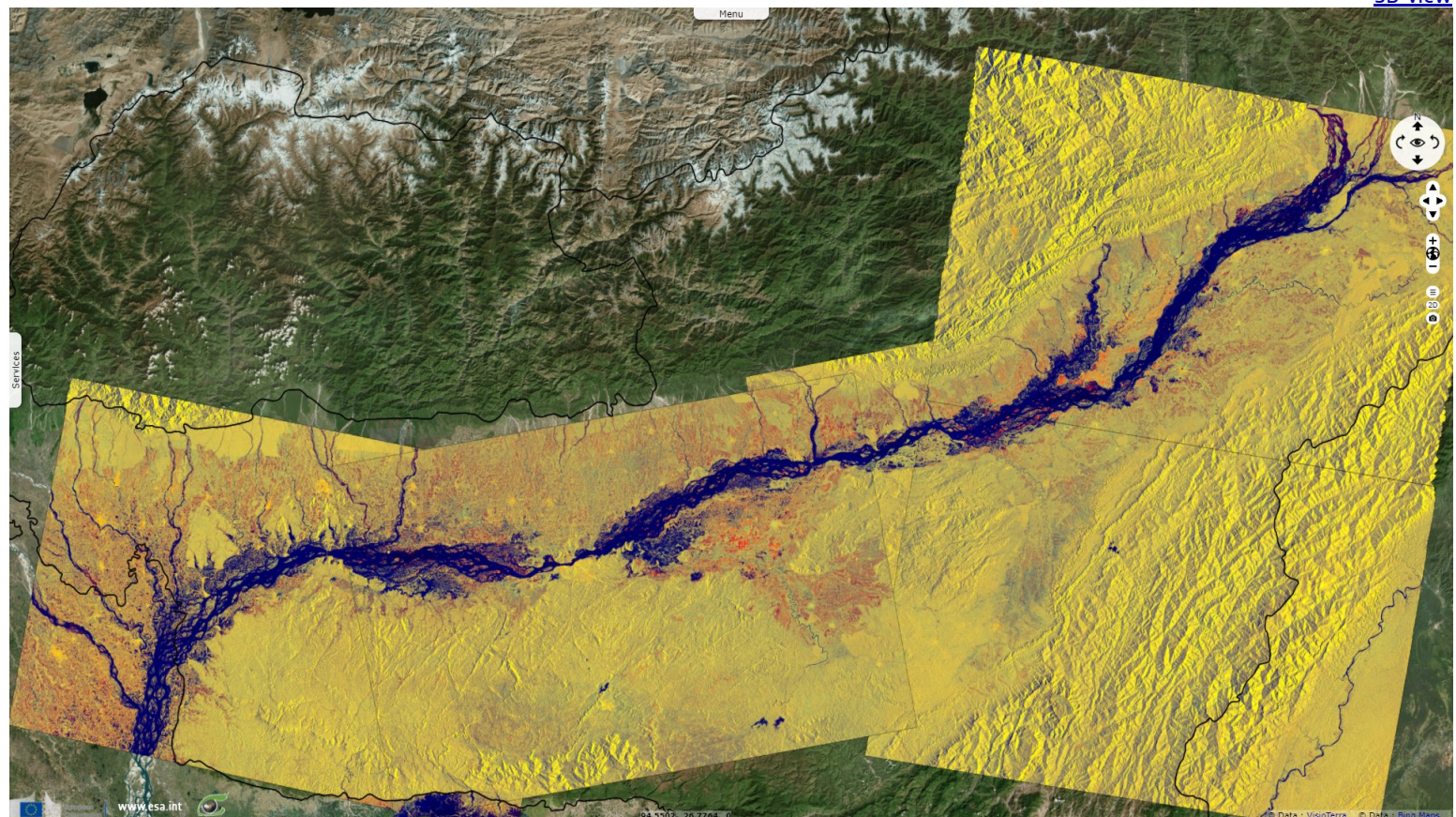
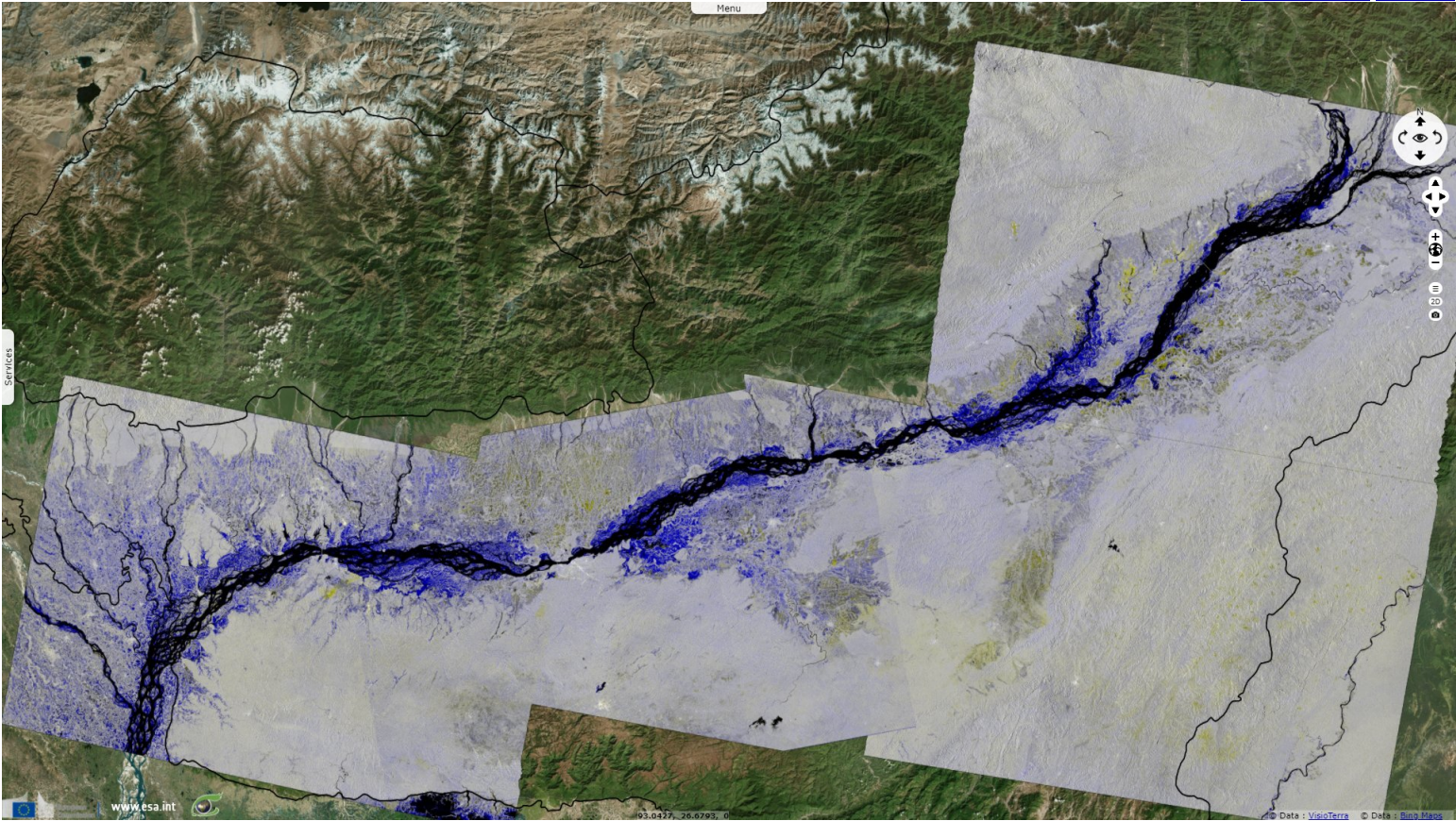














Fig. 4 - S1 (before / after multidade) - Kaziranga National Park & Tiger Reserve authorities said 70% of the forest is submerged under floodwaters. [3D animation](#) [3D view](#)



*The views expressed herein can in no way be taken to reflect the official opinion of the European Space Agency or the European Union.
Contains modified Copernicus Sentinel data 2021, processed by VisioTerra.*

More on European Commission space:							
More on ESA:				S-1 website	S-2 website	S-3 website	
More on Copernicus program:				SciHub portal	Cophub portal	Inthub portal	Colhub portal
More on VisioTerra:				Sentinel Vision Portal	Envisat+ERS portal	Swarm+GOCE portal	CryoSat portal