

Flood in south-east Mississippi Basin

Sentinel-3 SLSTR RBT acquired on 31 January 2019 at 16:01:43 UTC
Sentinel-1 CSAR IW acquired on 22 February 2019 from 00:10:33 to 00:11:23 UTC

...
Sentinel-3 SLSTR RBT acquired on 24 February 2019 at 16:18:48 UTC
Sentinel-1 CSAR IW acquired on 02 March 2019 from 23:46:51 to 23:47:16 UTC

Author(s): Sentinel Vision team, VisioTerra, France - svp@visioterra.fr

Keyword(s): Land, emergency, flooding, natural disaster, river, precipitations, USA, United States of America



[2D Layerstack](#)

Fig. 1 - S3 SLSTR (31.01.2019) - S5,S3,S2 colour composite - SE Mississippi basin before it was flooded by heavy rainfalls.

[2D view](#) [3D view](#)

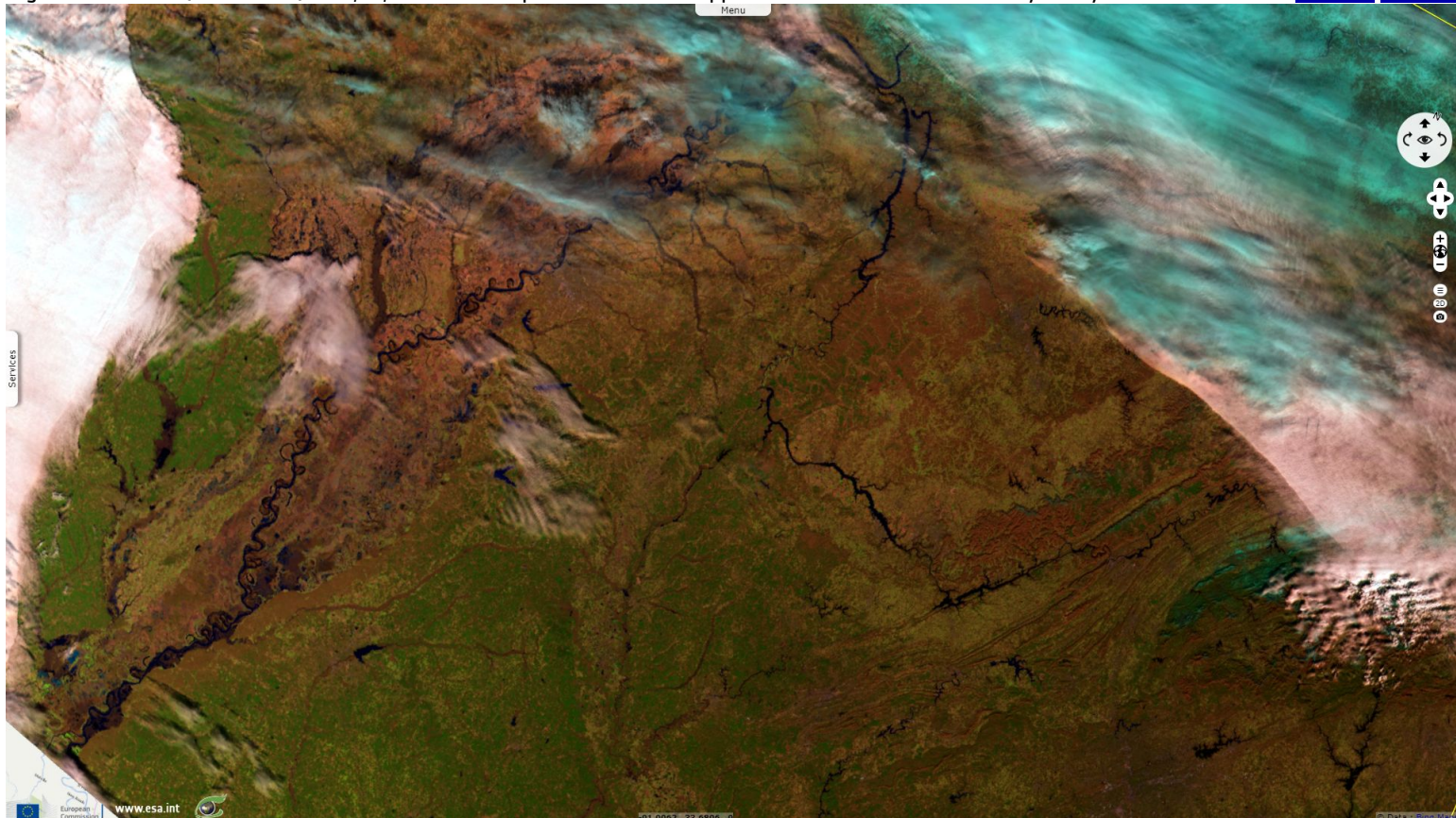


Fig. 2 - 24.02.2019 - This image acquired shortly after the heavy precipitations shows flooded areas in dark blue.

[3D view](#)

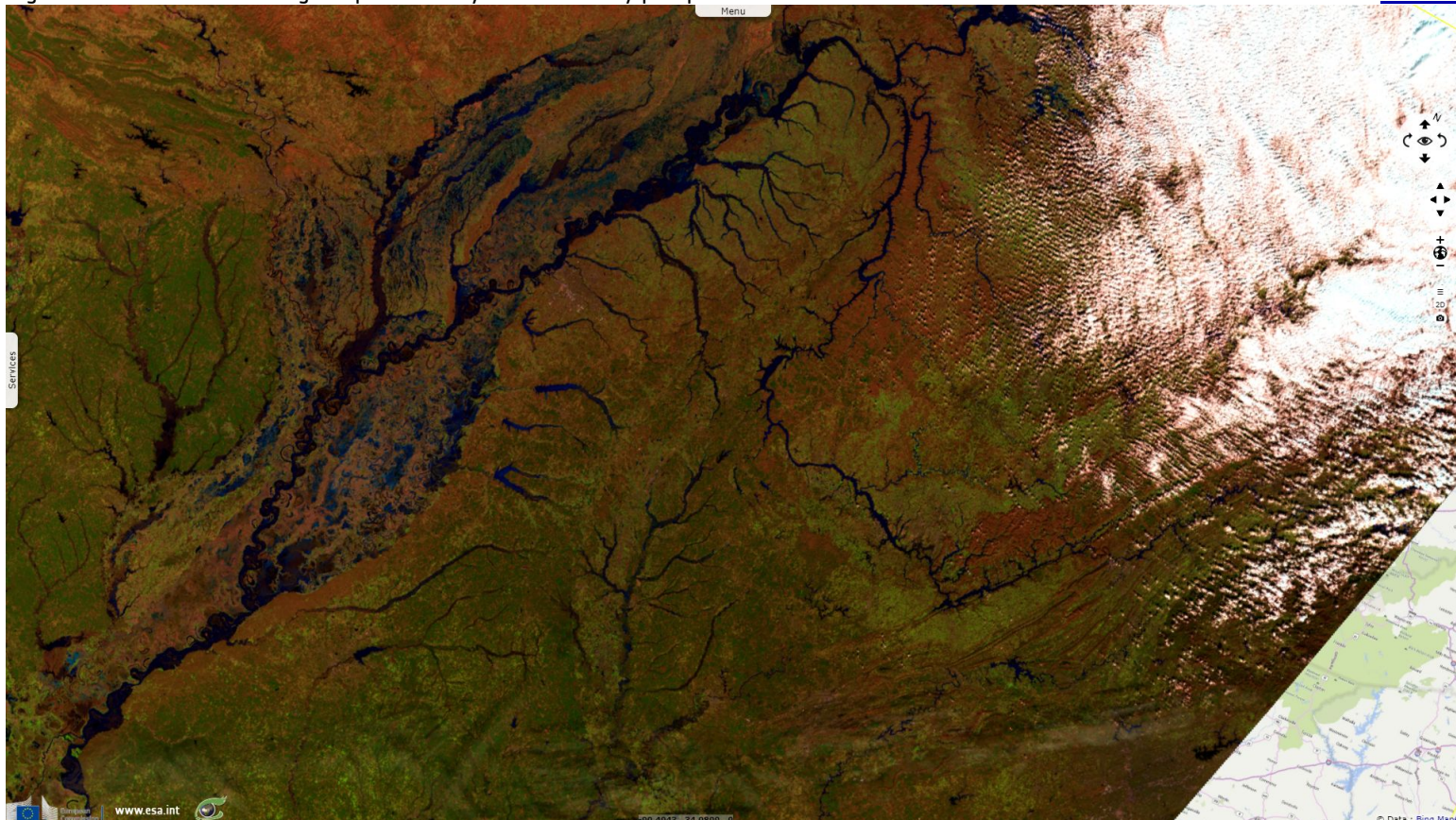


Fig. 3 - S1 (25.02.2019 to 02.03.2019) - vv,vh,ndi(vh,vv) colour composite - Open water shows in dark blue on this radar image.

[2D view](#) [3D view](#)

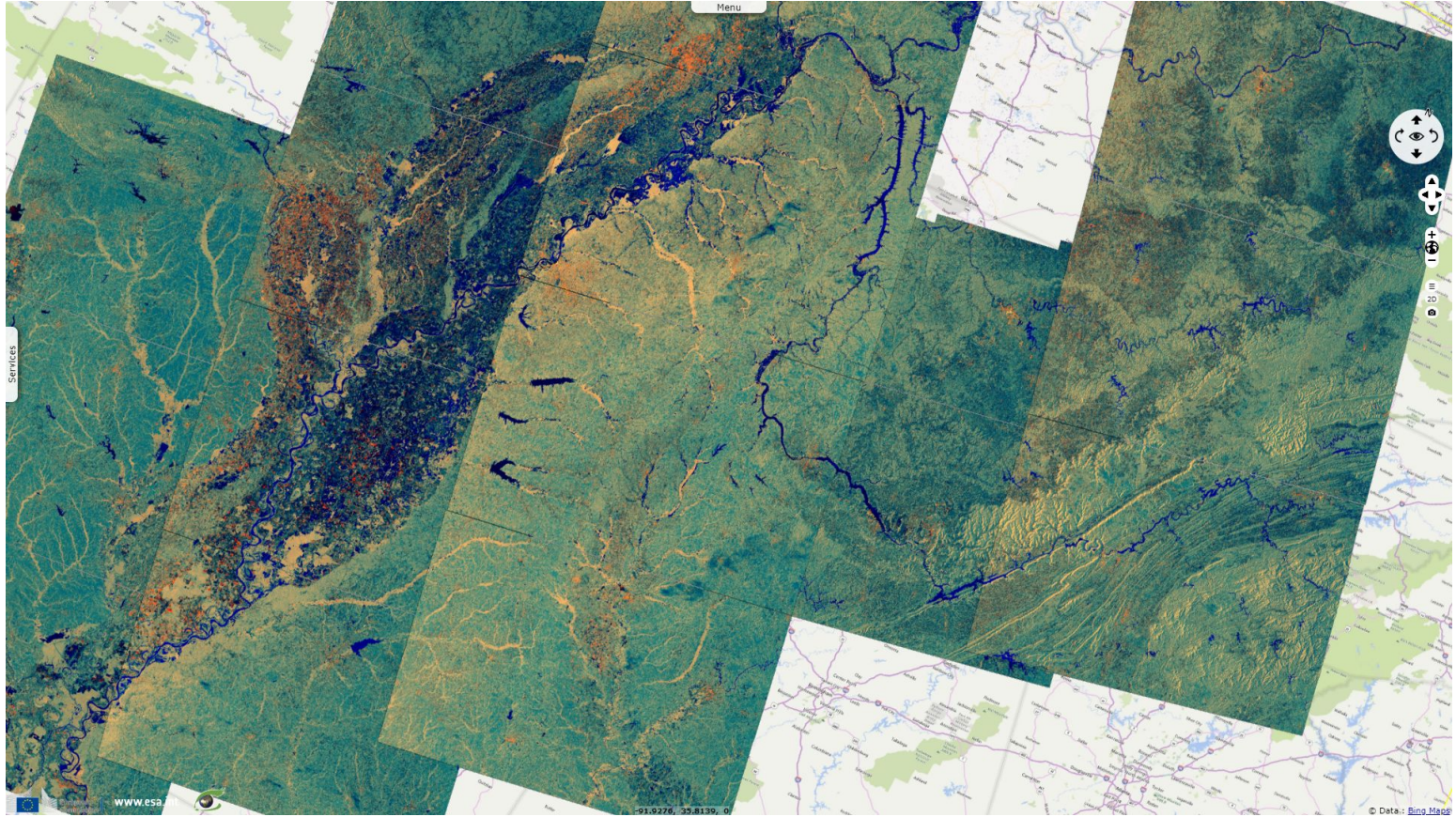
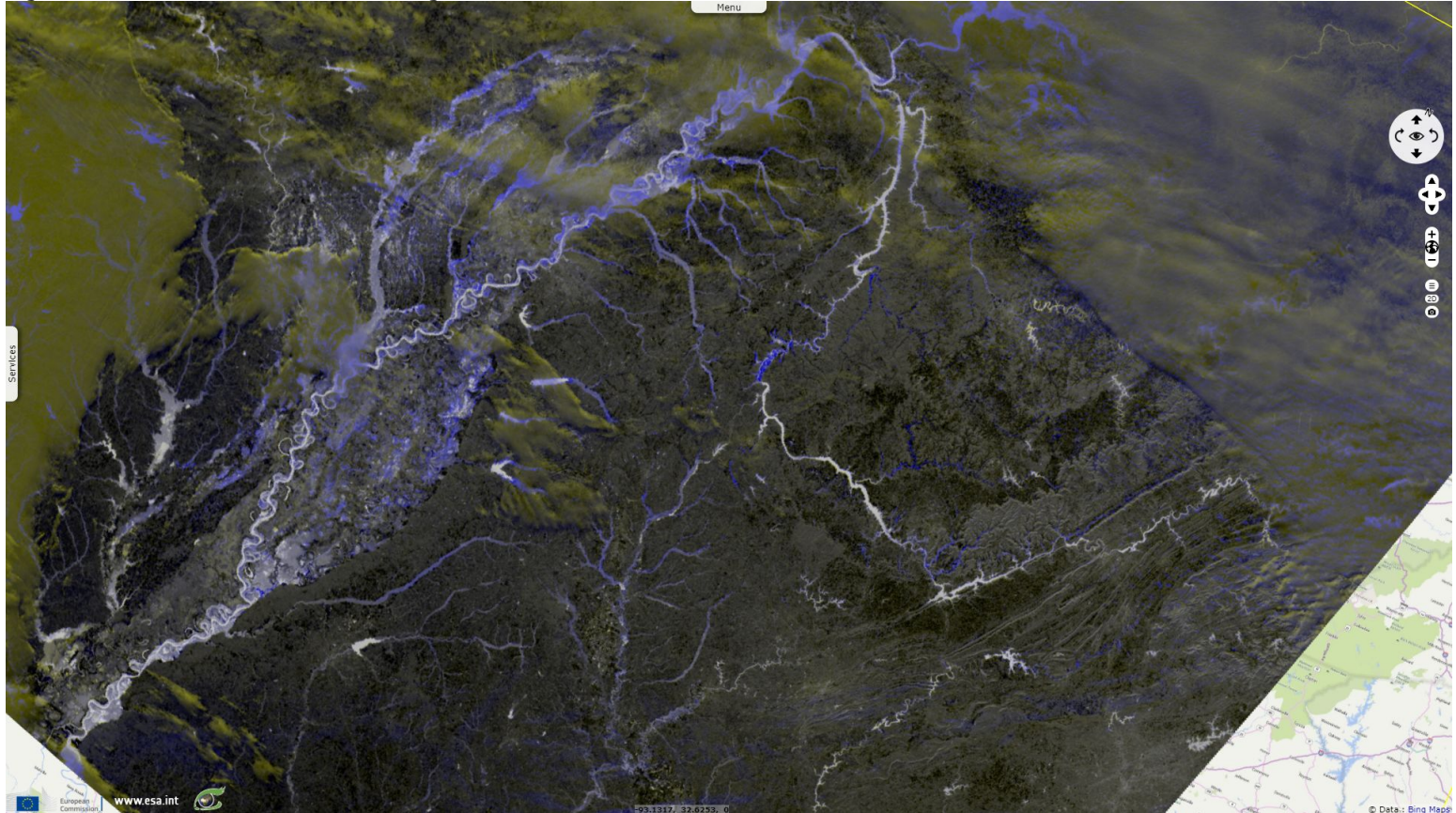


Fig. 4 - S3 SLSTR - red:NDWI(2019.01.31), green:NDWI(2019.01.31), blue:NDWI(2019.02.24) - Flood in blue in cloudless areas [3D animation](#) [3D view](#)



*The views expressed herein can in no way be taken to reflect the official opinion of the European Space Agency or the European Union.
Contains modified Copernicus Sentinel data 2019, processed by VisioTerra.*

More on European Commission space:						
More on ESA:				S-1 website	S-2 website	S-3 website
More on Copernicus program:				SciHub portal	Cophub portal	Inthub portal
More on VisioTerra:				Sentinel Vision Portal	Envisat+ERS portal	Swarm+GOCE portal
						CryoSat portal