

# Flooding in Mojave Desert, United States

Sentinel-1 CSAR IW acquired on 22 February 2019 from 13:51:29 to 13:51:54 UTC

Sentinel-2 MSI acquired on 28 February 2019 at 18:33:09 UTC

Sentinel-1 CSAR IW acquired on 06 March 2019 from 13:51:29 to 13:51:54 UTC

Sentinel-2 MSI acquired on 07 March 2019 at 18:22:19 UTC

Sentinel-2 MSI acquired on 10 March 2019 at 18:31:49 UTC

Author(s): Sentinel Vision team, VisioTerra, France - [svp@visioterra.fr](mailto:svp@visioterra.fr)

Keyword(s): Precipitations, endorheic basin, sebkhas, rain shadow, salt lake, depression, coastal range, California, USA

[2D Layerstack](#)

Fig. 1 - S1 (06.03.2019) - vv,vh,ndi(vh,vv) colour composite - The arid Death Valley was partially flooded, a rare occurrence. [3D animation](#) [3D view](#)

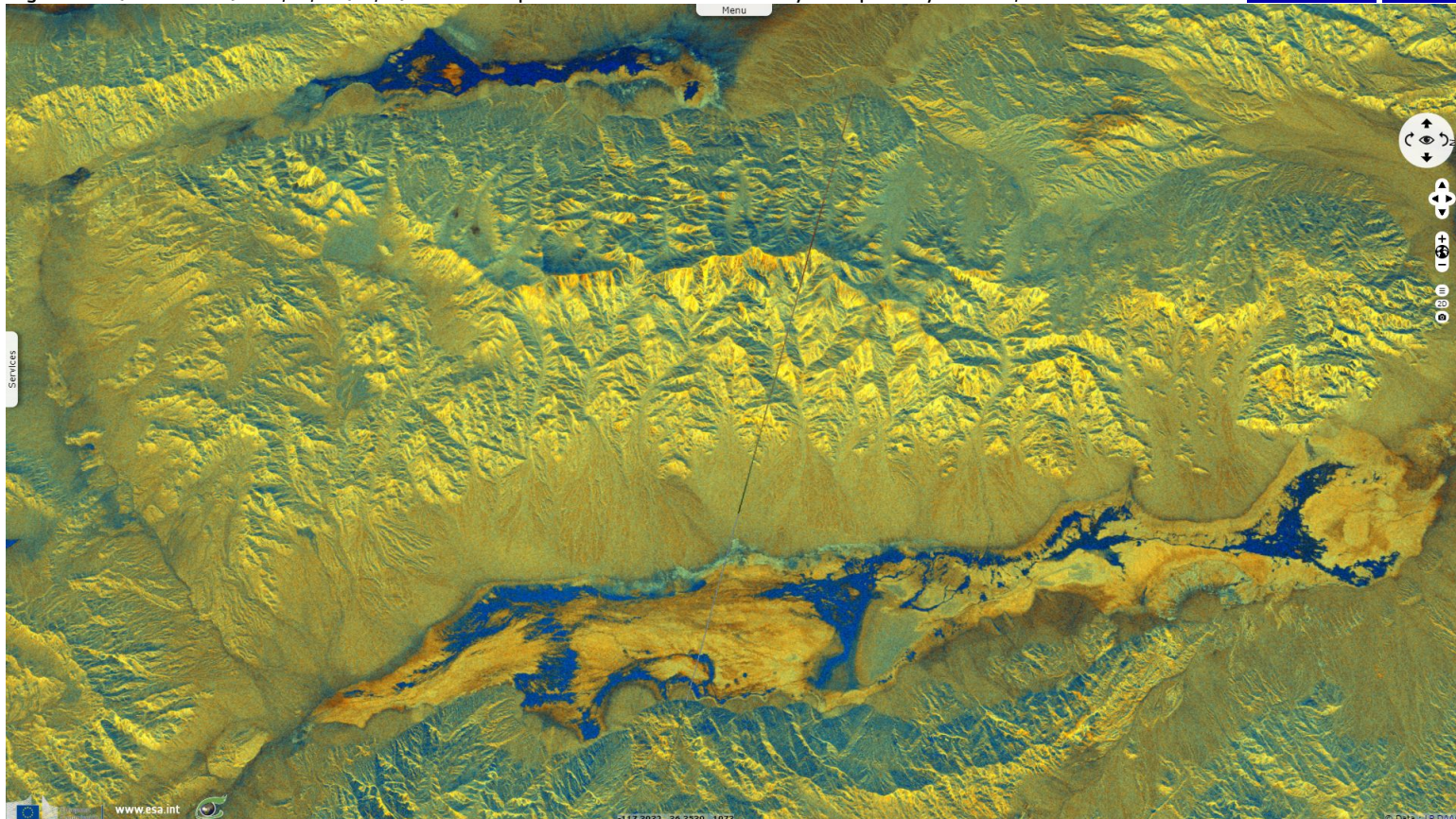


Fig. 2 - S1 - Red & Blue: vv (22.02.2019), Green: vv (06.03.2019) - Further south, flooded areas show in magenta. [3D animation](#) [3D view](#)

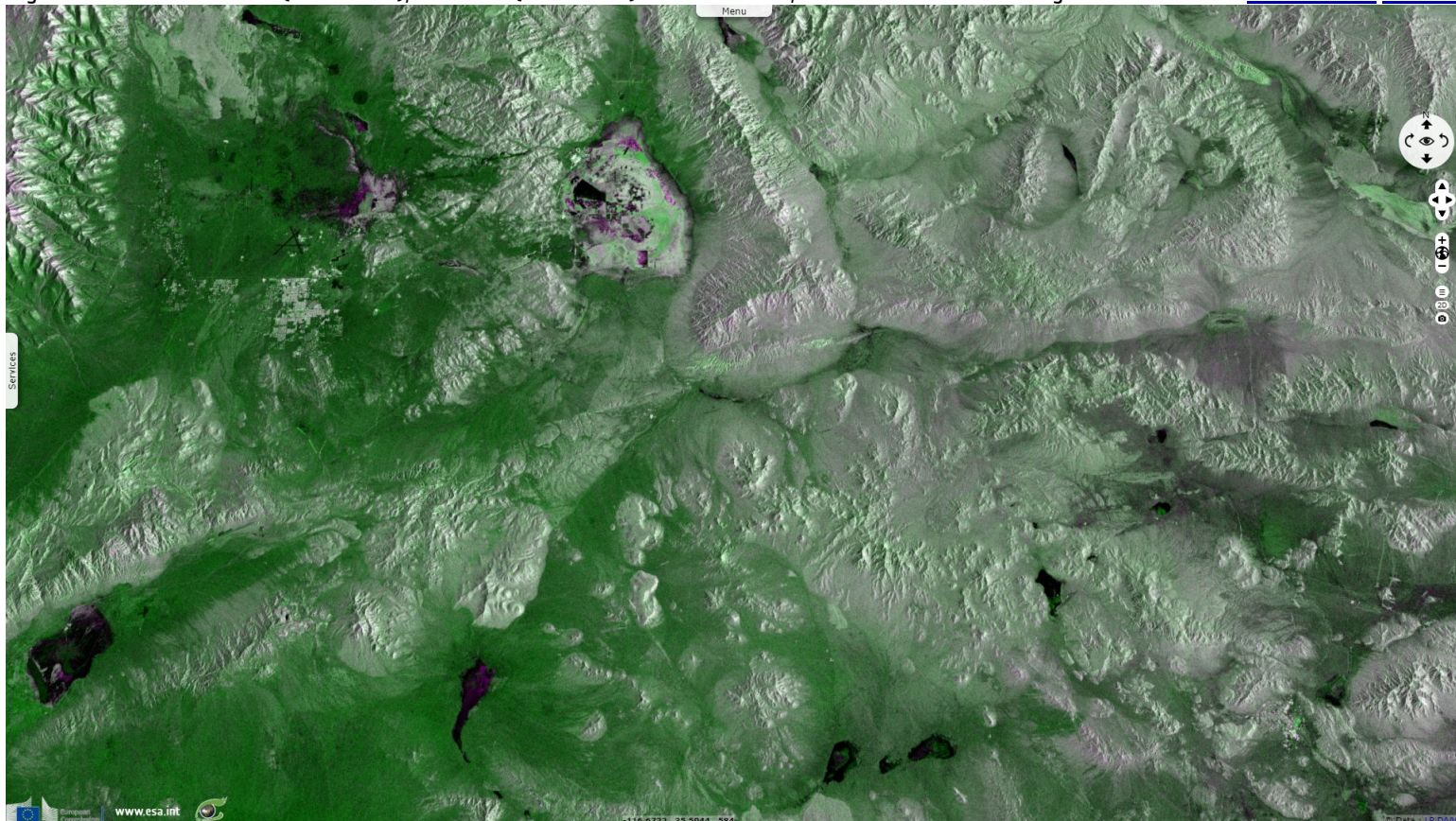




Fig. 3 - S2 (10.03.2019) - 12,11,4 colour composite - Many depressions of the Valleys & Ranges region were briefly refilled. [3D animation](#) [3D view](#)

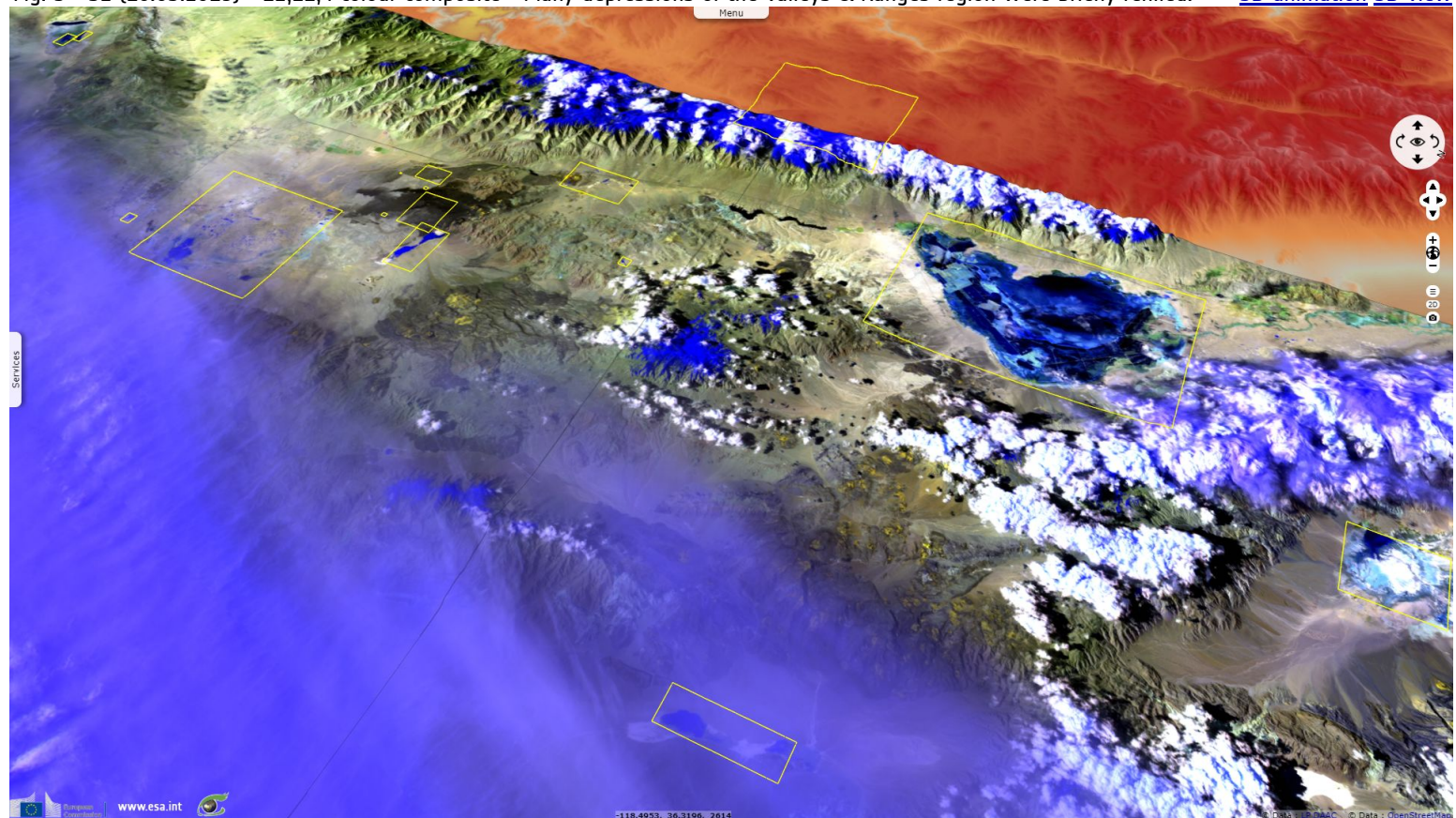
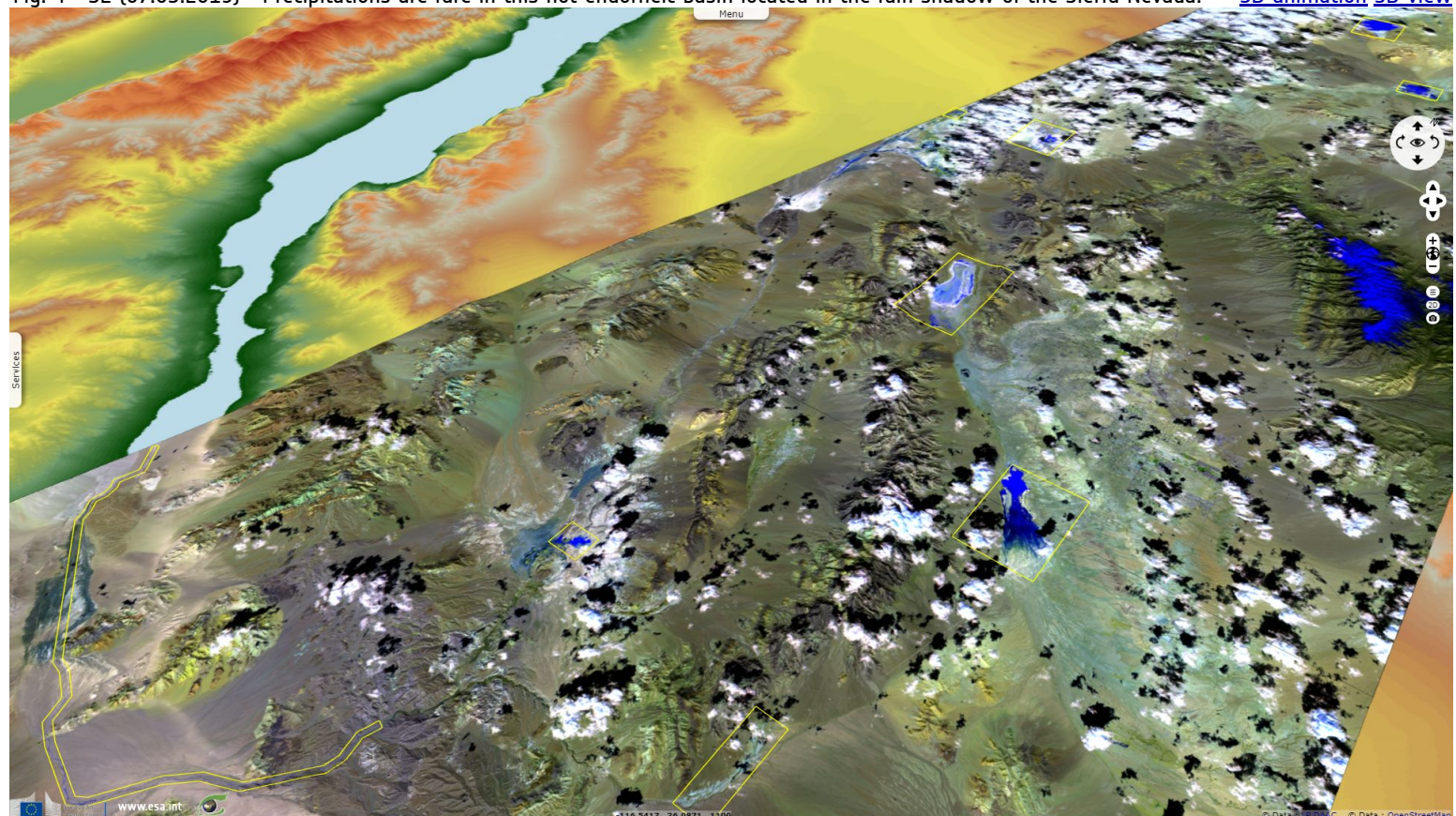














Fig. 4 - S2 (07.03.2019) - Precipitations are rare in this hot endorheic basin located in the rain shadow of the Sierra Nevada. [3D animation](#) [3D view](#)



*The views expressed herein can in no way be taken to reflect the official opinion of the European Space Agency or the European Union.  
Contains modified Copernicus Sentinel data 2019, processed by VisioTerra.*

More on European Commission space:							
More on ESA:				<a href="#">S-1 website</a>	<a href="#">S-2 website</a>	<a href="#">S-3 website</a>	
More on Copernicus program:				<a href="#">Scihub portal</a>	<a href="#">Cophub portal</a>	<a href="#">Inthub portal</a>	<a href="#">Colhub portal</a>
More on VisioTerra:				<a href="#">Sentinel Vision Portal</a>	<a href="#">Envisat+ERS portal</a>	<a href="#">Swarm+GOCE portal</a>	<a href="#">CryoSat portal</a>