

# Cal Madow, Somalia

Sentinel-2 MSI acquired on **06 December 2017** at 07:13:01 UTC  
Sentinel-2 MSI acquired on **16 December 2017** at 07:13:11 UTC  
Sentinel-3 OLCI FR acquired on **18 December 2017** at 06:44:56 UTC  
Sentinel-1 CSAR IW acquired on **15 January 2018** at 02:35:27 UTC

Author(s): Sentinel Vision team, VisioTerra, France - [svp@visioterra.fr](mailto:svp@visioterra.fr)

Keyword(s): Forests, rift, coastal range, rivers, strata, geological formations, plateaus, Cal Madow, Somalia



[2D Layerstack](#)

Fig. 1 - Sentinel-3 OLCI - 2017-12-18 - 18,10,3 composite - Forests along the slopes of the range (800-2460 meters) .

[2D view](#)

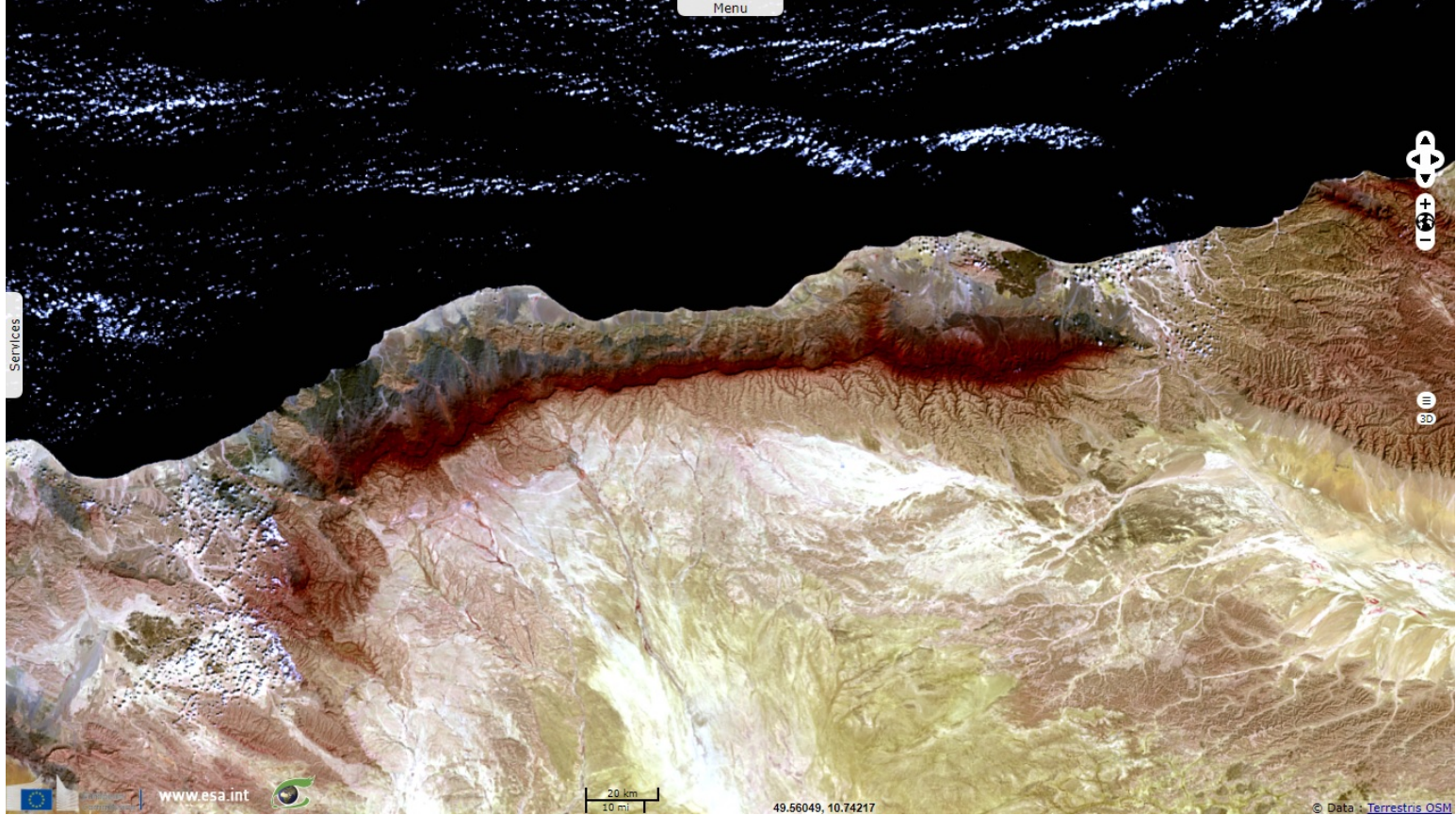


Fig. 2 - Sentinel-2 - 2017-12-06 - 12,11,2 composite - Geological structures along Cal Madow's slopes.

[2D view](#)





Fig. 3 - S2 - 2017-12-16 - 11,8,2 composite - Forests and deeply-incised plateaus in the highlands.

[3D view](#)

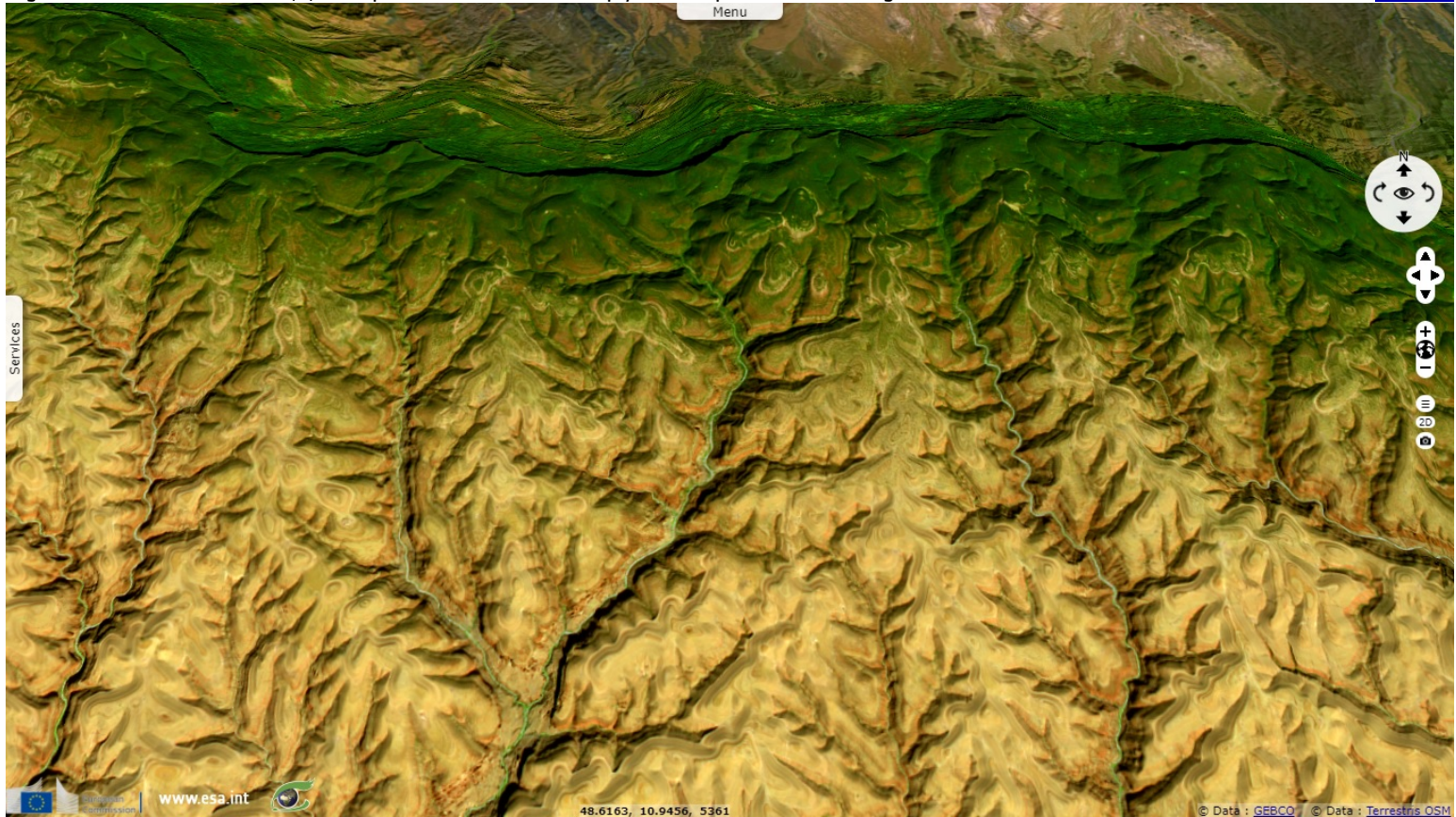
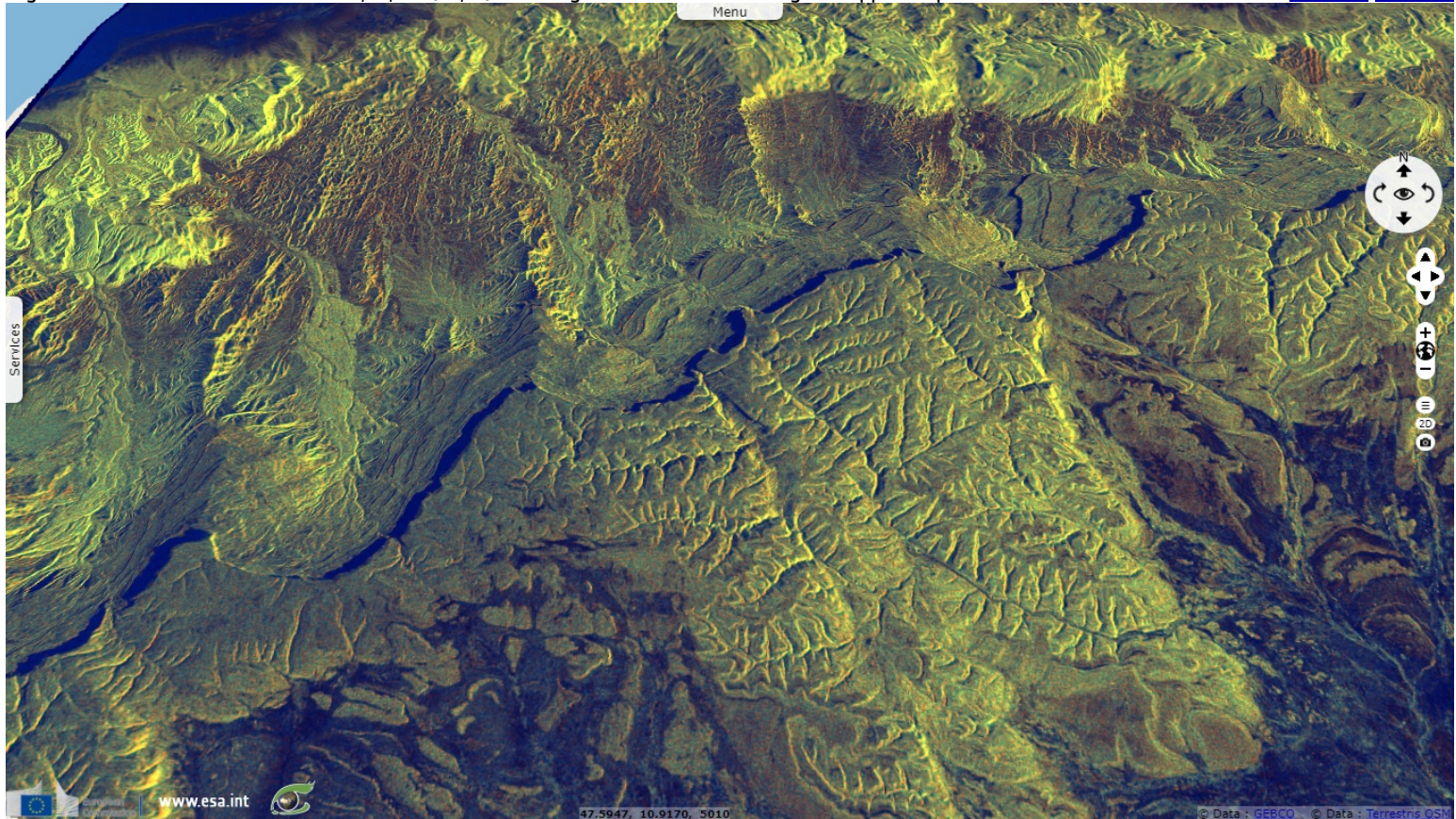


Fig. 4 - Sentinel-1 - 2018-01-15 - vv,vh,ndi (vh,vv) - Geological strata visible along the upper slopes.

[2D view](#) [3D view](#)



*The views expressed herein can in no way be taken to reflect the official opinion of the European Space Agency or the European Union.*

More on European Commission space:								
More on ESA:				<a href="#">S-1 website</a>	<a href="#">S-2 website</a>	<a href="#">S-3 website</a>		
More on Copernicus program:				<a href="#">SciHub portal</a>	<a href="#">Cohub portal</a>	<a href="#">Inthub portal</a>	<a href="#">Colhub portal</a>	
More on VisioTerra:				<a href="#">Sentinel Vision Portal</a>	<a href="#">Envisat+ERS portal</a>	<a href="#">Swarm+GOCE portal</a>	<a href="#">CryoSat portal</a>	Proba-V portal