

Building of Chinchero airport creates a risk of mass tourism on the Machu Picchu

Sentinel-1 CSAR IW acquired on 30 January 2017 at 10:22:19 UTC

Sentinel-2 MSI acquired on 29 July 2019 at 14:57:39 UTC

Sentinel-1 CSAR IW acquired on 31 July 2019 at 10:22:38 UTC

Author(s): Sentinel Vision team, VisioTerra, France - svp@visioterra.fr

Keyword(s): Land, urban planning, infrastructures, agriculture, tourism, UNESCO World Heritage

[2D Layerstack](#)

Fig. 1 - S1 (30.01.2017) - vv,vh,ndi(vh,vv) - An international airport is being built in a 3700m high town of Chinchero, Peru.

[2D view](#) [3D view](#)

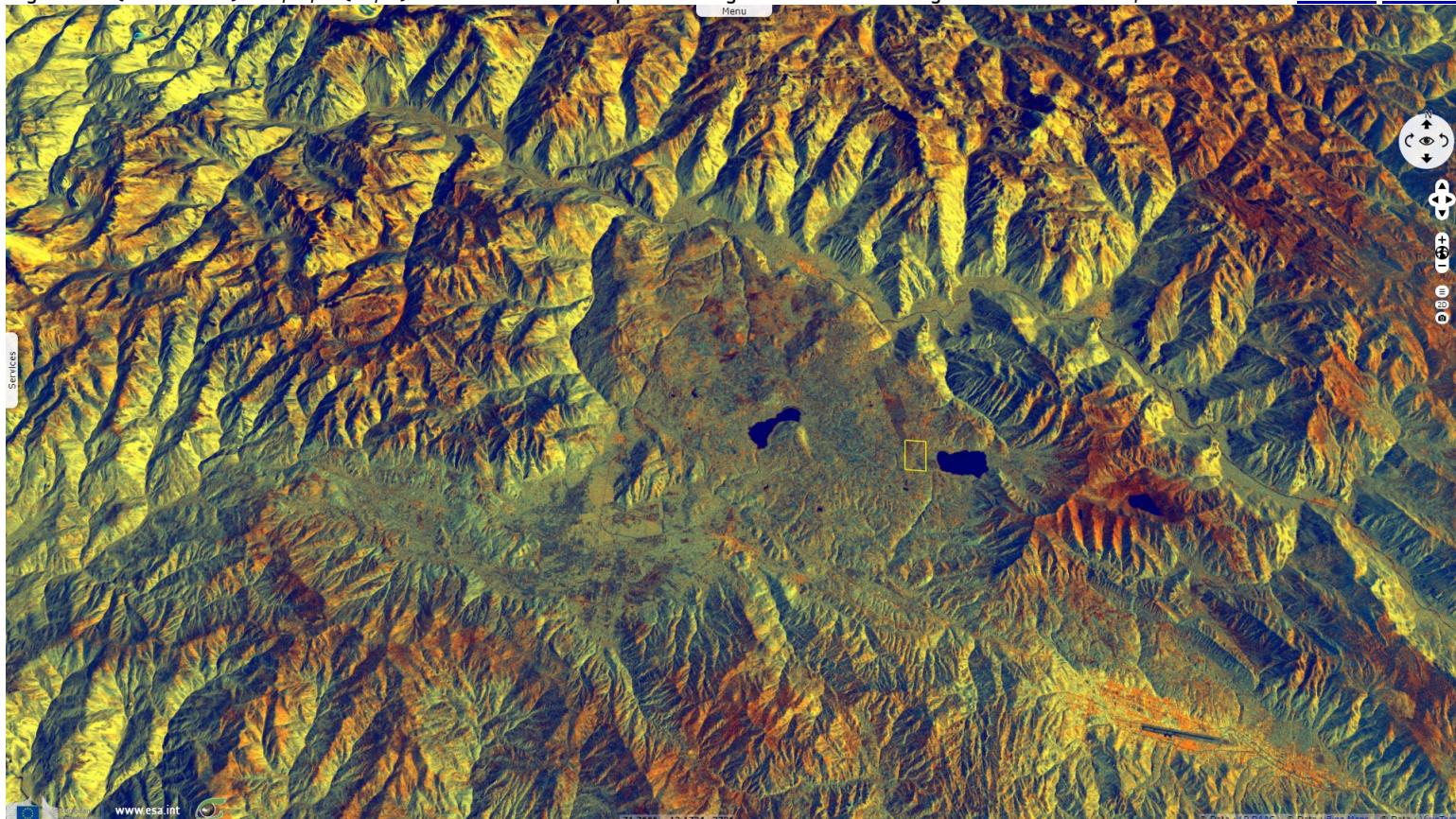


Fig. 2 - Chinchero before the first stone was laid the 03.02.2017 and now.

[3D animation](#) [3D view](#)

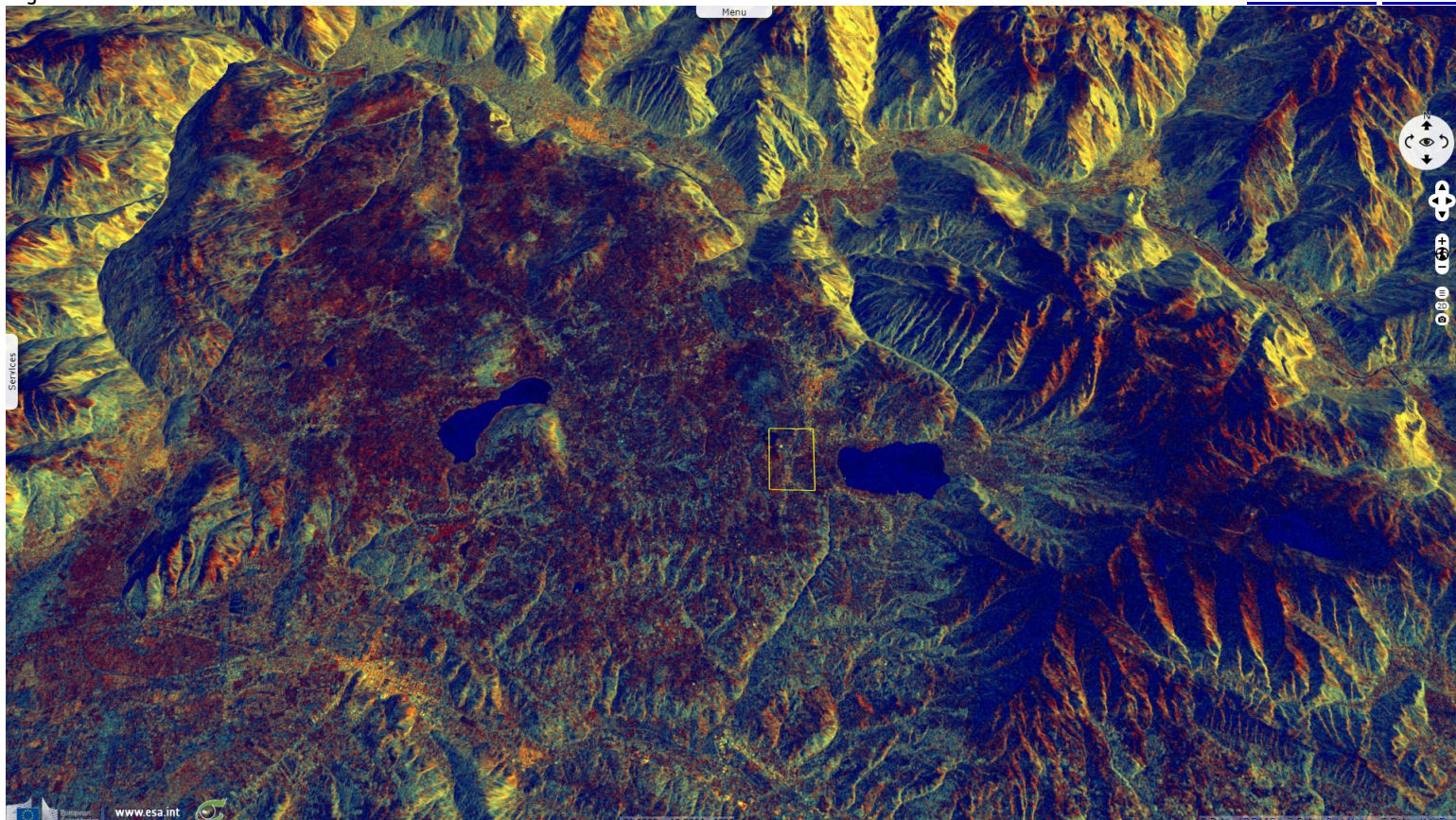


Fig. 3 - S2 (09.07.2016) - 4,3,2 natural colour - Lying between Cuzco & the 600 years old Machu Picchu, it will shorten trips to the latter. [2D view](#)



Fig. 4 - 29.07.2019 - The prehispanic town is being transformed by skyrocketing prices that go along huge tourism investments [2D animation](#) [2D view](#)



*The views expressed herein can in no way be taken to reflect the official opinion of the European Space Agency or the European Union.
Contains modified Copernicus Sentinel data 2019, processed by VisioTerra.*

More on European Commission space:						
More on ESA:				S-1 website	S-2 website	S-3 website
More on Copernicus program:				SciHub portal	Cophub portal	Inthub portal
More on VisioTerra:				Sentinel Vision Portal	Envisat+ERS portal	Swarm+GOCE portal
					CryoSat portal	