

Diamond city, Kimberley, South Africa

Sentinel-1 CSAR IW acquired on 09 December 2021 at 17:02:51 UTC
Sentinel-1 CSAR IW acquired on 21 December 2021 at 17:02:50 UTC
Sentinel-1 CSAR IW acquired on 02 January 2022 at 17:02:49 UTC
Sentinel-2 MSI acquired on 23 February 2022 at 07:59:19 UTC

Author(s): Sentinel Vision team, VisioTerra, France - svp@visioterra.fr

Keyword(s): Natural ressources, mines, urban planning, South Africa



[2D Layerstack](#)

Fig. 1 - S2 (23.02.2022) - Kimberley is the capital and largest city of the Northern Cape province of South Africa.

[2D view](#)

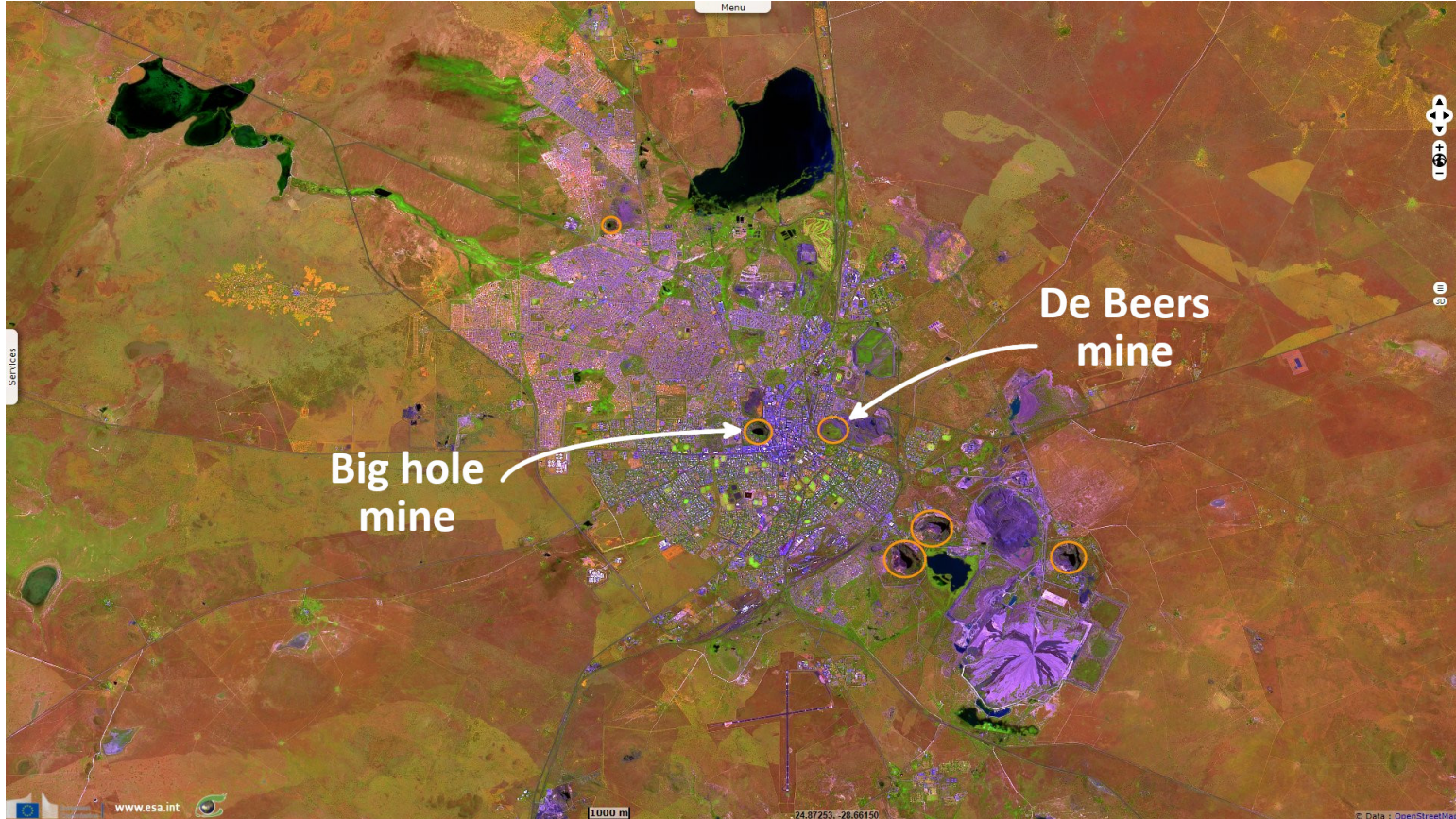


Fig. 2 - S1 (09 & 21.12.2021, 02.01.2022) - Several big holes were dug into the earth following the kimberlite pipes.

[2D view](#)



The city has historical significance due to its diamond mining past, its link to de Beers company and the siege during the 2nd Anglo-Boer war.

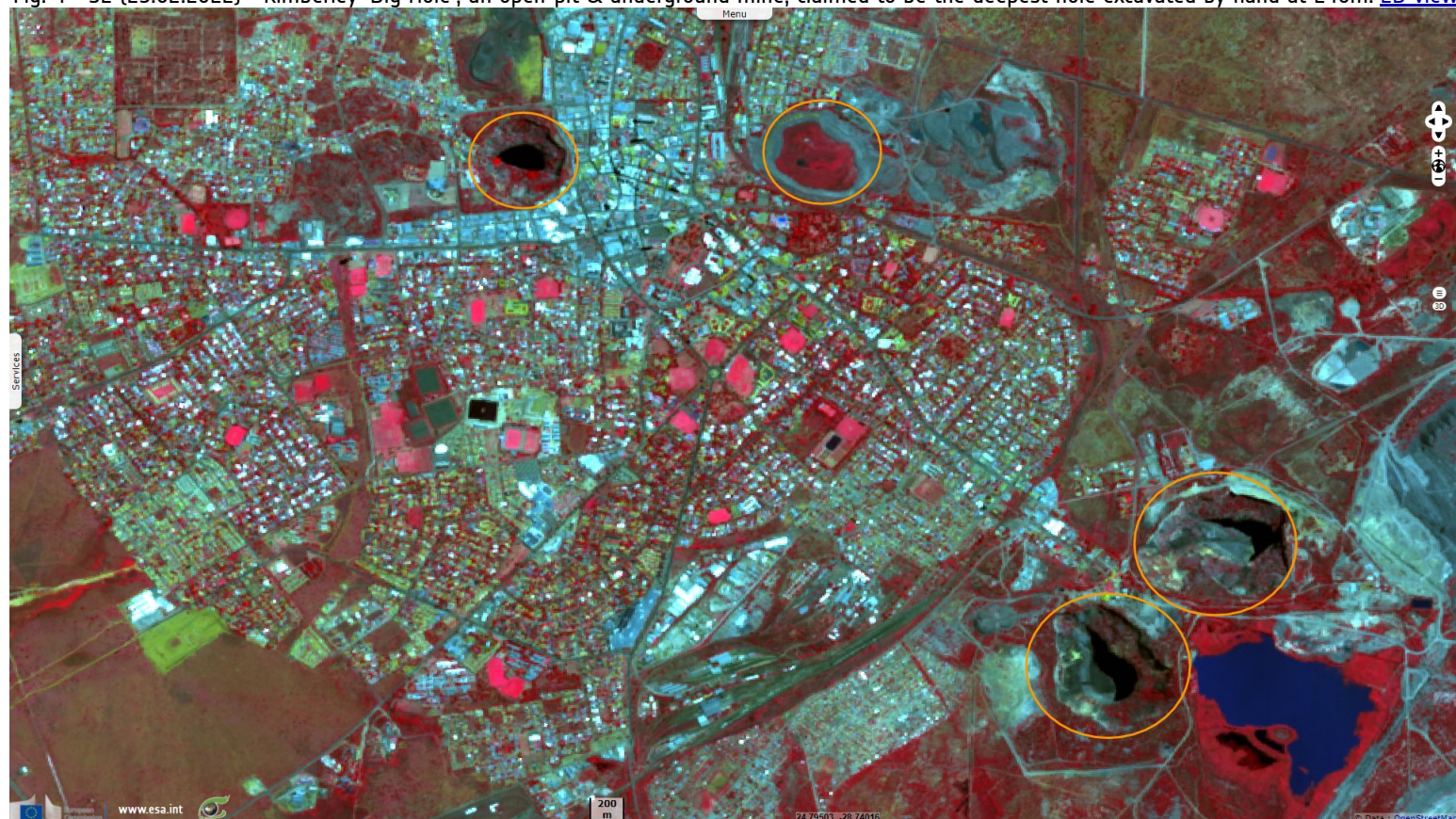
Fig. 3 - S2 (23.02.2022) - The kimberlite, the predominant diamond-bearing ore, is named after this diamond rush town.

[2D view](#)



Fig. 4 - S2 (23.02.2022) - Kimberley 'Big Hole', an open-pit & underground mine, claimed to be the deepest hole excavated by hand at 240m.

[2D view](#)



*The views expressed herein can in no way be taken to reflect the official opinion of the European Space Agency or the European Union.
Contains modified Copernicus Sentinel data 2022, processed by VisioTerra.*

More on European Commission space:						
More on ESA:				S-1 website	S-2 website	S-3 website
More on Copernicus program:				SciHub portal	Cophub portal	Inthub portal
More on VisioTerra:				Sentinel Vision Portal	Envisat+ERS portal	Swarm+GOCE portal
					CryoSat portal	