

The Swiss plateau

Sentinel-3 OLCI FR acquired on 31 October 2016 at 10:05:21 UTC
Sentinel-1 CSAR EW acquired on 12 December 2016 at 17:14:22 UTC
Sentinel-3 OLCI FR acquired on 29 August 2017 at 09:35:28 UTC
Sentinel-3 OLCI FR acquired on 20 April 2018 at 10:09:08 UTC

Author(s): Sentinel Vision team, VisioTerra, France - svp@visioterra.fr

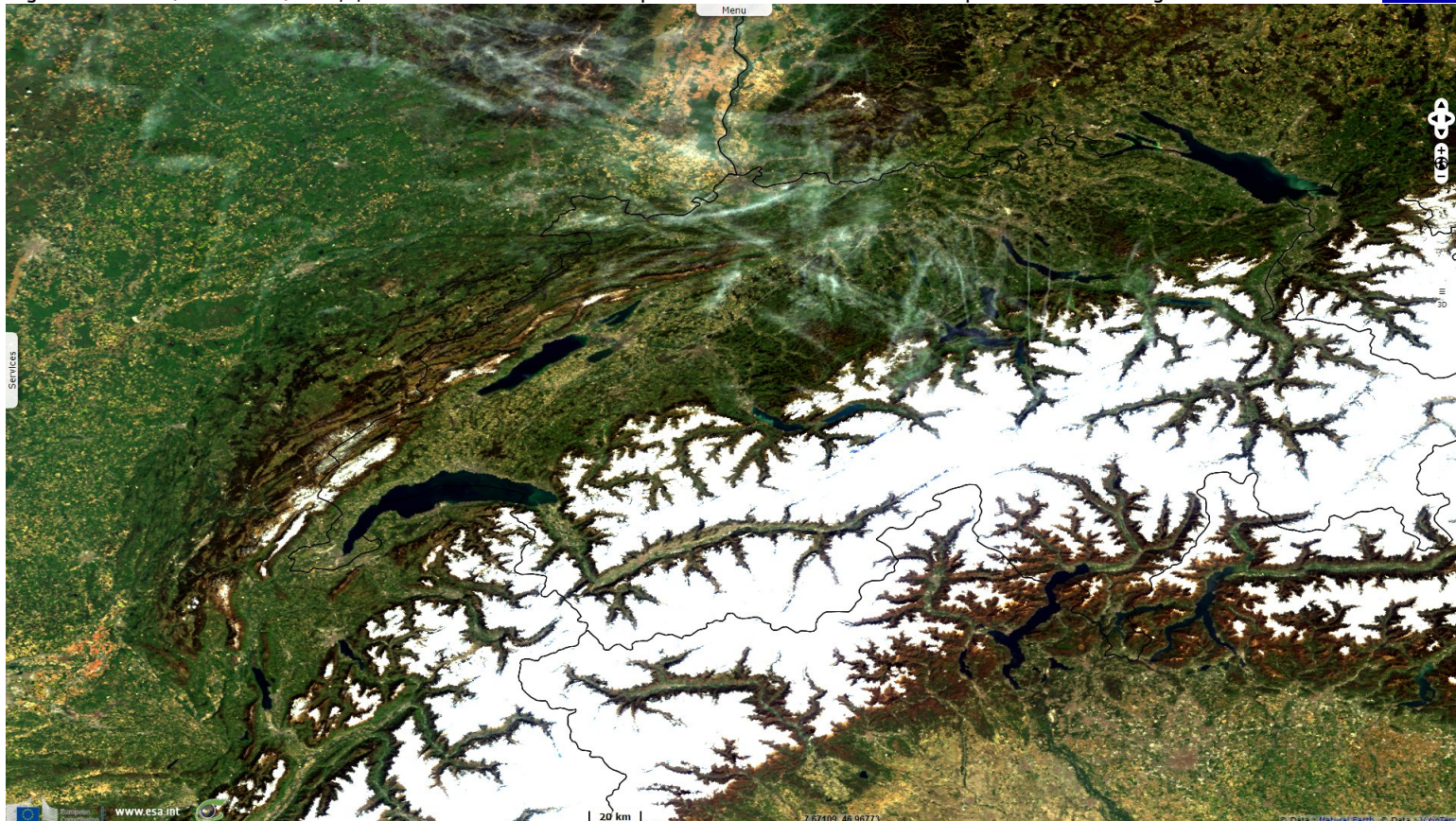
Keyword(s): Plateau, plain, mountain range, geology, lakes, Alps, Jura, Switzerland, France, Germany, Austria



[2D Layerstack](#)

Fig. 1 - S3 OLCI (20.04.2018) - 10,6,3 natural colour - The Swiss plateau is located between the Alps and the Jura ranges.

[2D view](#)



Both ranges run parallel along a SW-NE direction, from Chambéry (France) to Lake Constance at the Swiss/German/Austrian border.

Fig. 2 - S3 OLCI (31.10.2016) - Both are relatively young ranges born from the collision between the European and African ranges.

[3D view](#)



Fig. 3 - S1 EW (12.12.2016) - Most of the Swiss population lives in this plane area which extends to the Bavarian plains.

[3D view](#)

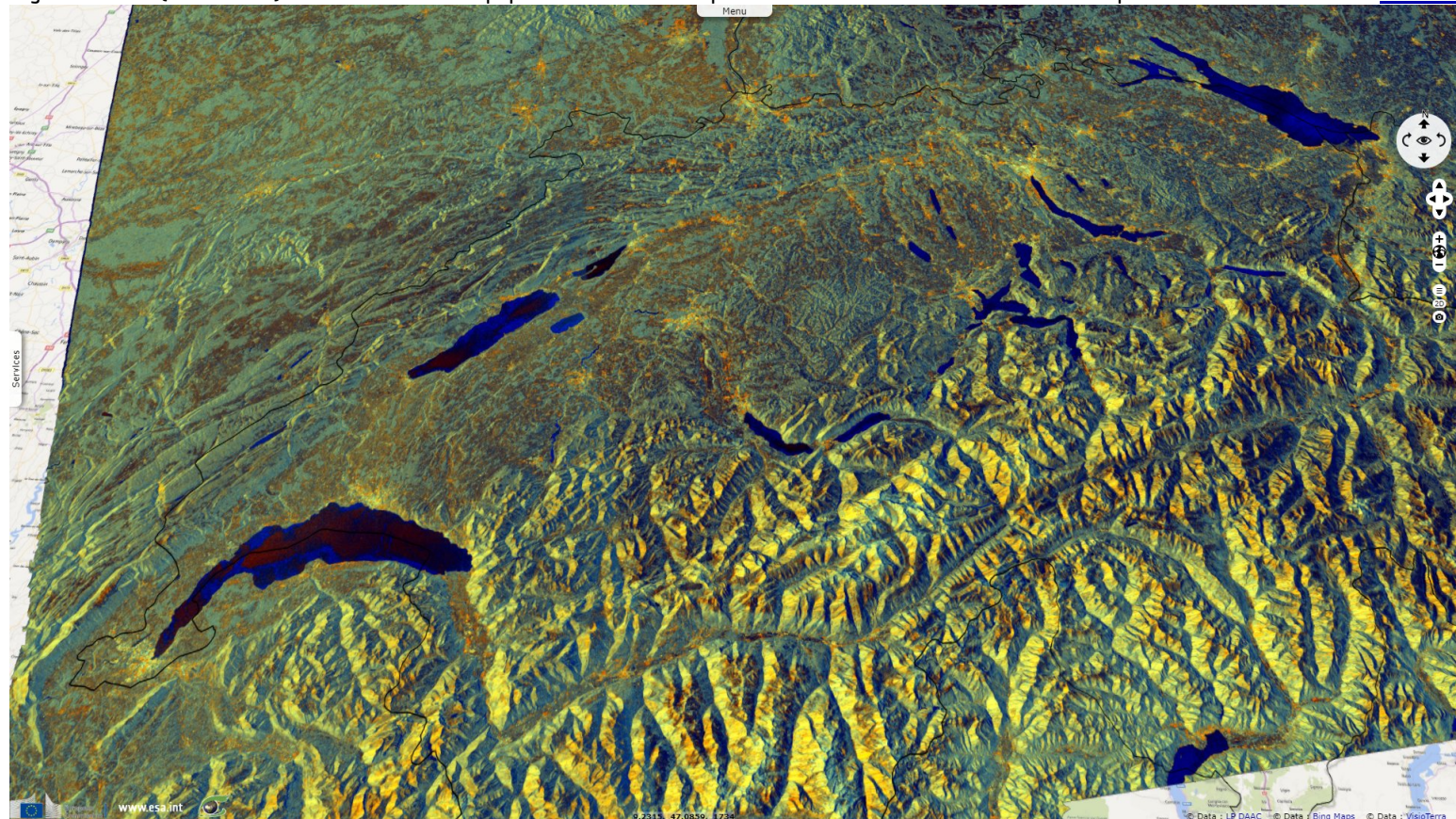
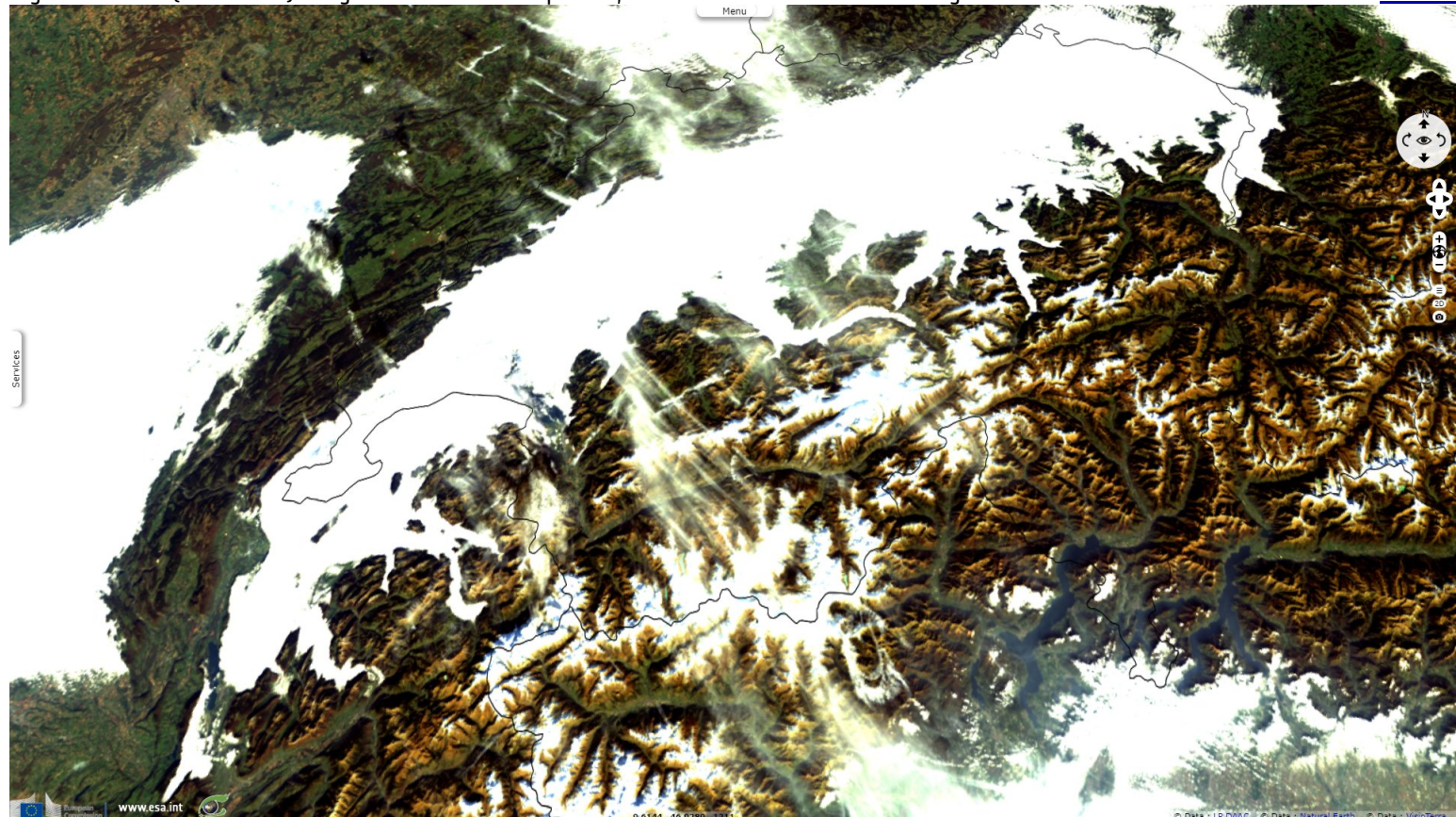


Fig. 4 - S3 OLCI (31.10.2016) - Fog blankets the Swiss plateau, constrained between the two ranges.

[3D view](#)



*The views expressed herein can in no way be taken to reflect the official opinion of the European Space Agency or the European Union.
Contains modified Copernicus Sentinel data 2019, processed by VisioTerra.*

More on European Commission space:					
More on ESA:			S-1 website	S-2 website	S-3 website
More on Copernicus program:			SciHub portal	Cophub portal	Inthub portal
More on VisioTerra:			Sentinel Vision Portal	Envisat+ERS portal	Swarm+GOCE portal
				CryoSat portal	