

First giant cruise ship to return in Venice

Sentinel-2 MSI acquired on 02 June 2021 at 10:10:31 UTC
Sentinel-1 CSAR IW acquired on 02 June 2021 at 17:06:44 UTC
Sentinel-1 CSAR IW acquired on 03 June 2021 at 16:58:08 UTC
Sentinel-2 MSI acquired on 04 June 2021 at 10:00:29 UTC
Sentinel-1 CSAR IW acquired on 07 June 2021 at 05:18:28 UTC

Author(s): Sentinel Vision team, VisioTerra, France - svp@visioterra.fr

Keyword(s): Marine security, vessel, urban planning, lagoon, tourism, Italy.



[2D Layerstack](#)

Fig. 1 - S2 (02.06.2021) - View of Venice before the cruise ship arrival, the port lies at west, St Mark's Square at centre.

[2D view](#)



Fig. 2 - S1 (02.06.2021) - Radar view one day before the return of the first cruise ship.

[3D view](#)

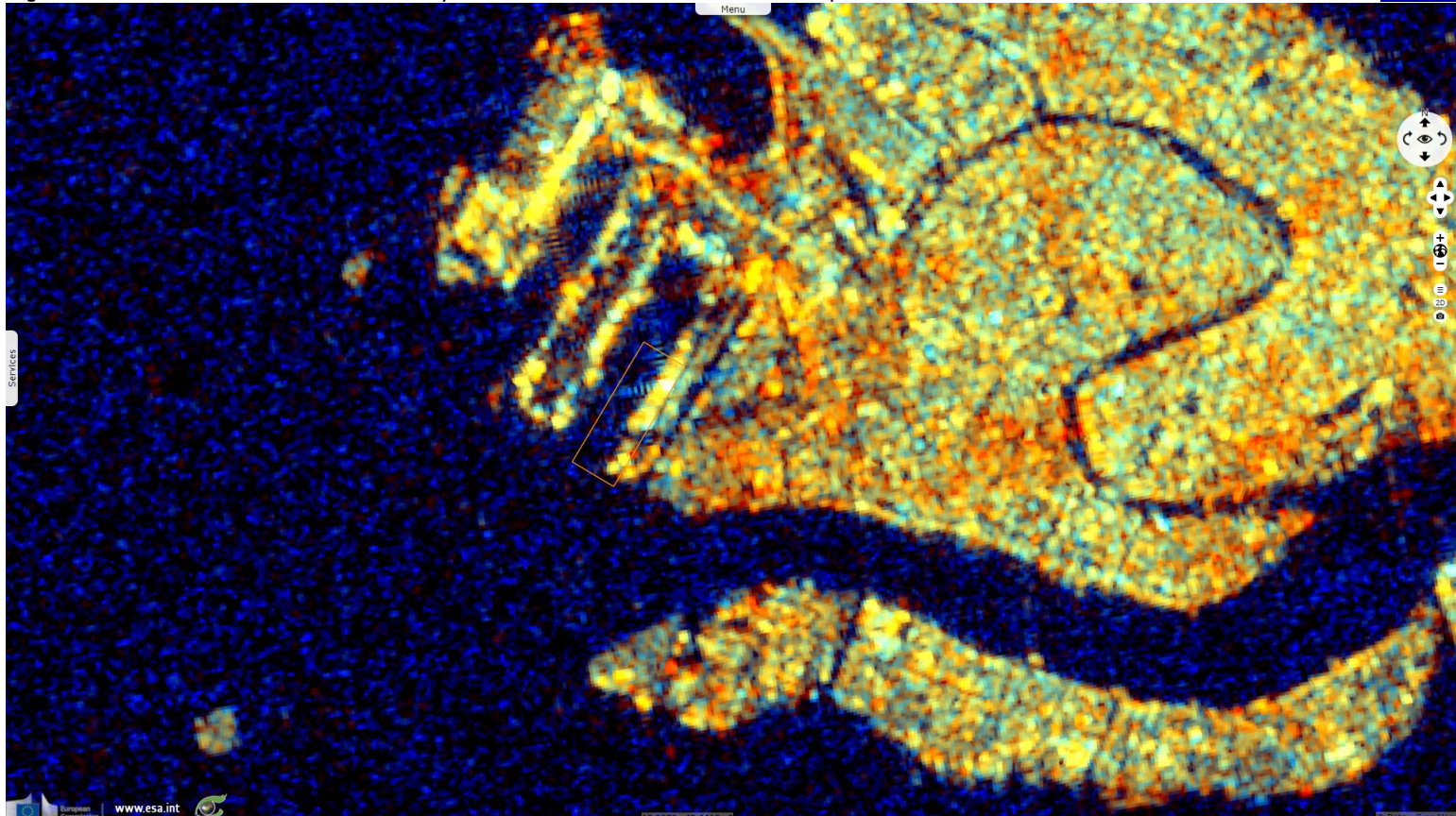
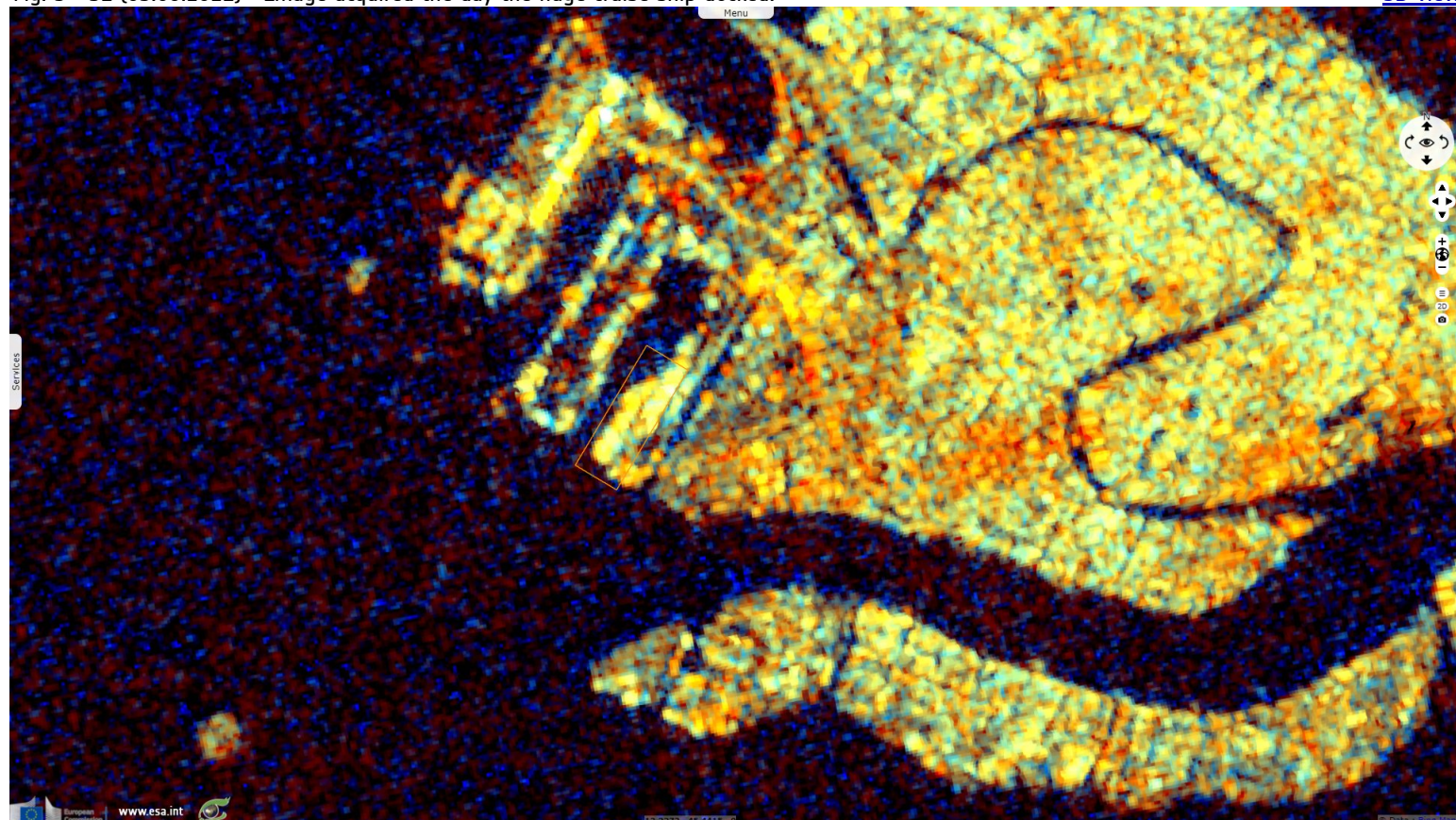


Fig. 3 - S1 (03.06.2021) - Image acquired the day the huge cruise ship docked.

[3D view](#)



Before the pandemic, the city hosted an estimated 28 million visitors a year. Ban on huge vessels passing St Mark's Square proved to be temporary after liner docks in city for first time in 17 months. Hundreds protested in Venice at return of giant cruise ships.

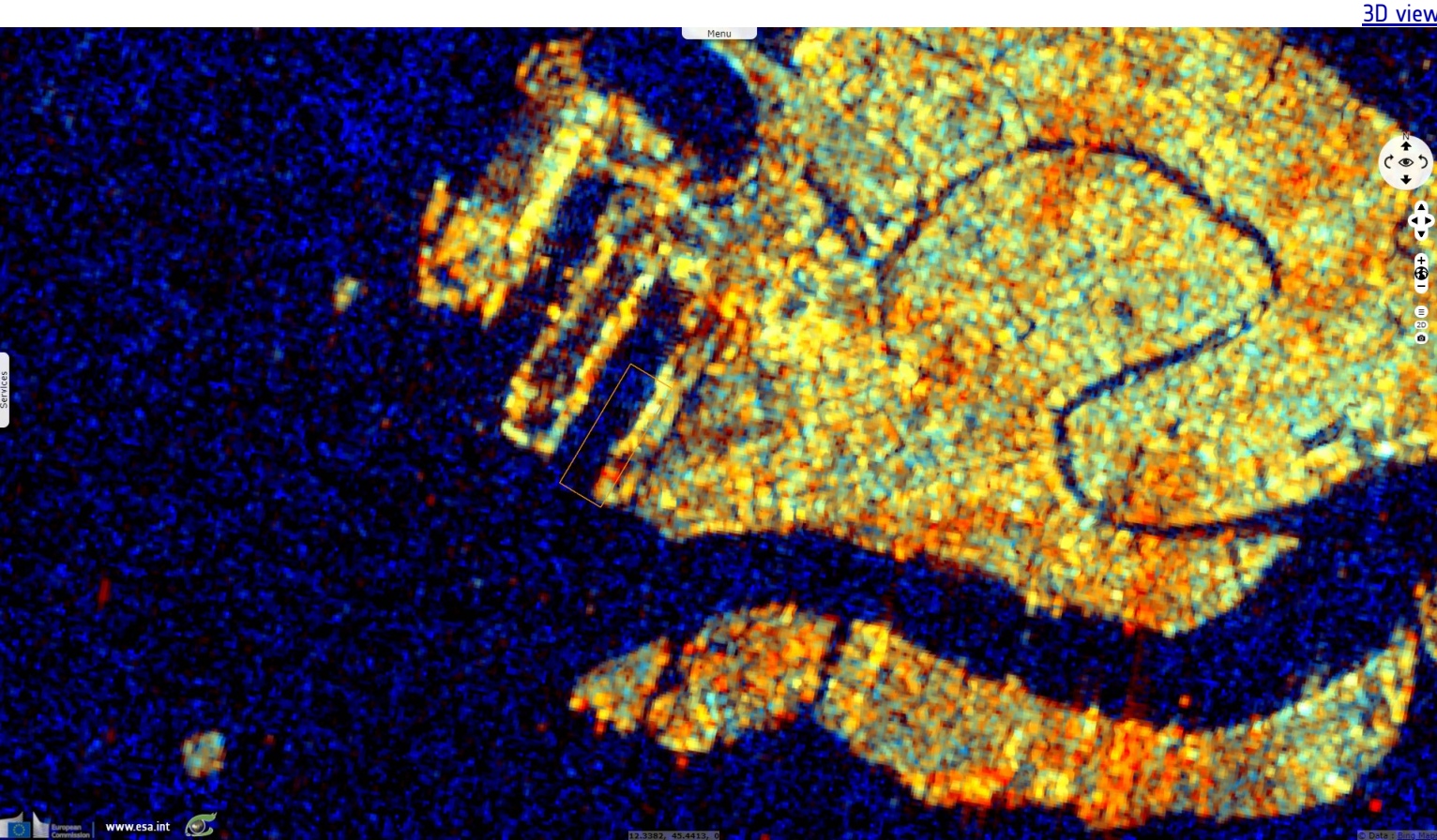
Fig. 4 - S2 (04.06.2021) - Cruise ship navigate in the shallow lagoon in a canal less wide than they are long.

[3D view](#)















On 03 June, for the first time since the pandemic began, a cruise liner sailed into the lagoon city 294 m long and 32 m wide, the 92 000 T ship MSC Orchestra collected 650 passengers before leaving for Bari, in southern Italy, on Saturday.

Fig. 5 - S1 (07.06.2021) - It has left the crammed city with 650 passengers on 05 June, meeting protesters and counterprotesters in disagreement about the pros and cons of overtourism.



A counterprotest was held by Si Grandi Navi, a movement that supports the thousands of people in the area whose livelihoods depend on the cruise industry and who have been out of work since the pandemic struck in spring last year.

*The views expressed herein can in no way be taken to reflect the official opinion of the European Space Agency or the European Union.
Contains modified Copernicus Sentinel data 2021, processed by VisioTerra.*

More on European Commission space:							
More on ESA:				S-1 website	S-2 website	S-3 website	
More on Copernicus program:				SciHub portal	Cophub portal	Inthub portal	Colhub portal
More on VisioTerra:				Sentinel Vision Portal	Envisat+ERS portal	Swarm+GOCE portal	CryoSat portal