

# Mining in Ohio state, United States

Sentinel-2 MSI acquired on 23 September 2020 at 16:10:11 UTC  
Sentinel-1 CSAR IW acquired on 07 October 2020 from 23:23:33 to 23:24:23 UTC  
Sentinel-1 CSAR IW acquired on 12 October 2020 from 23:31:54 to 23:32:19 UTC

Author(s): Sentinel Vision team, VisioTerra, France - [syp@visioterra.fr](mailto:syp@visioterra.fr)

Keyword(s): Land, geology, mines, United States, USA

[2D Layerstack](#)

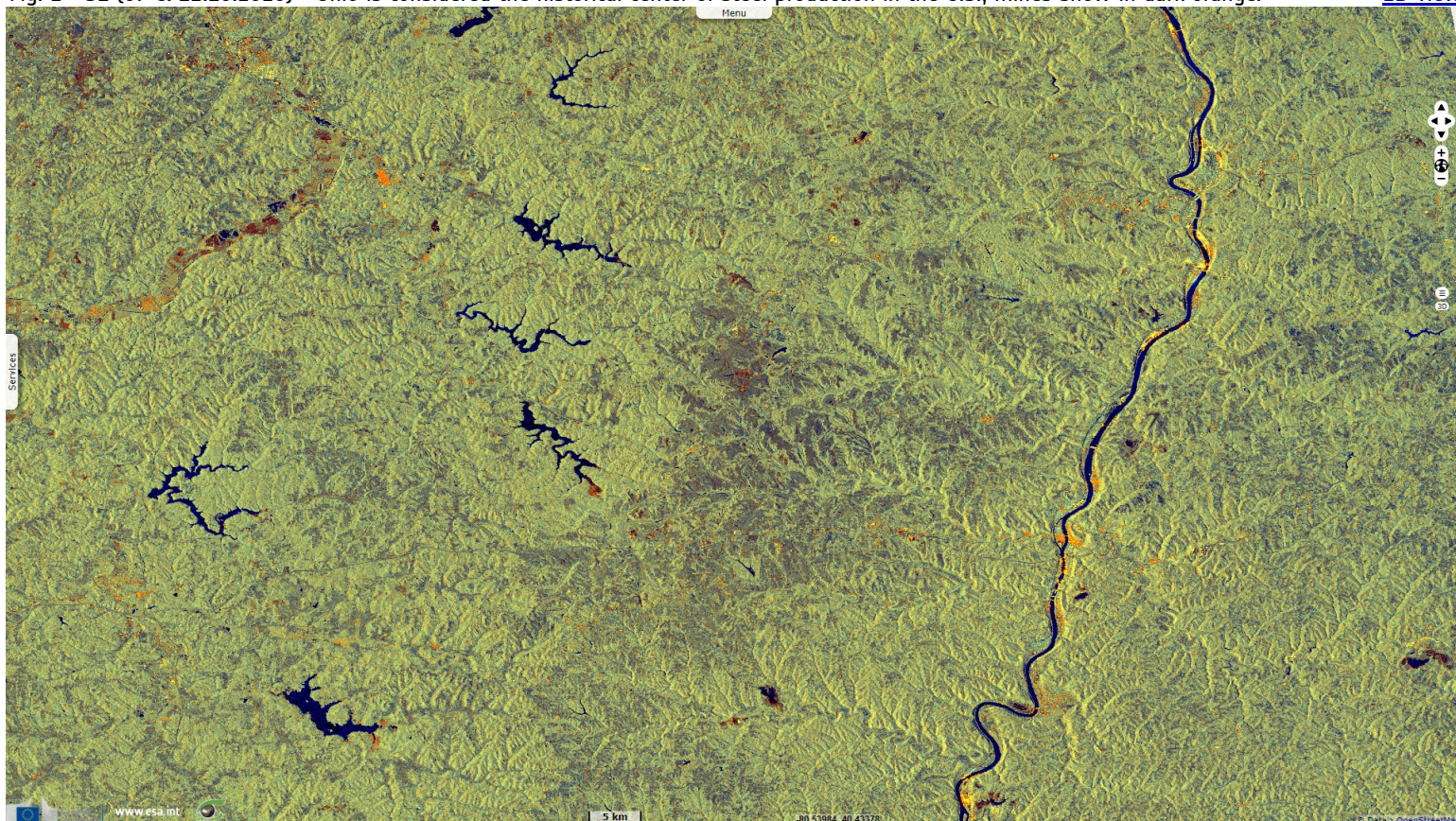
Fig. 1 - S1 (07 & 12.10.2020) - The state of Ohio lies south of Lake Erie and north-west of the Appalachians range.

[2D view](#)



Fig. 2 - S1 (07 & 12.10.2020) - Ohio is considered the historical center of steel production in the U.S., mines show in dark orange.

[2D view](#)



Ohio is also a coal producer and an oil and gas producing state via hydraulic fracturing, in particular in eastern counties.



Fig. 3 - S2 (23.09.2020) - Inadvertently, it is a swing state of prime importance in the US presidential elections.

[2D view](#)

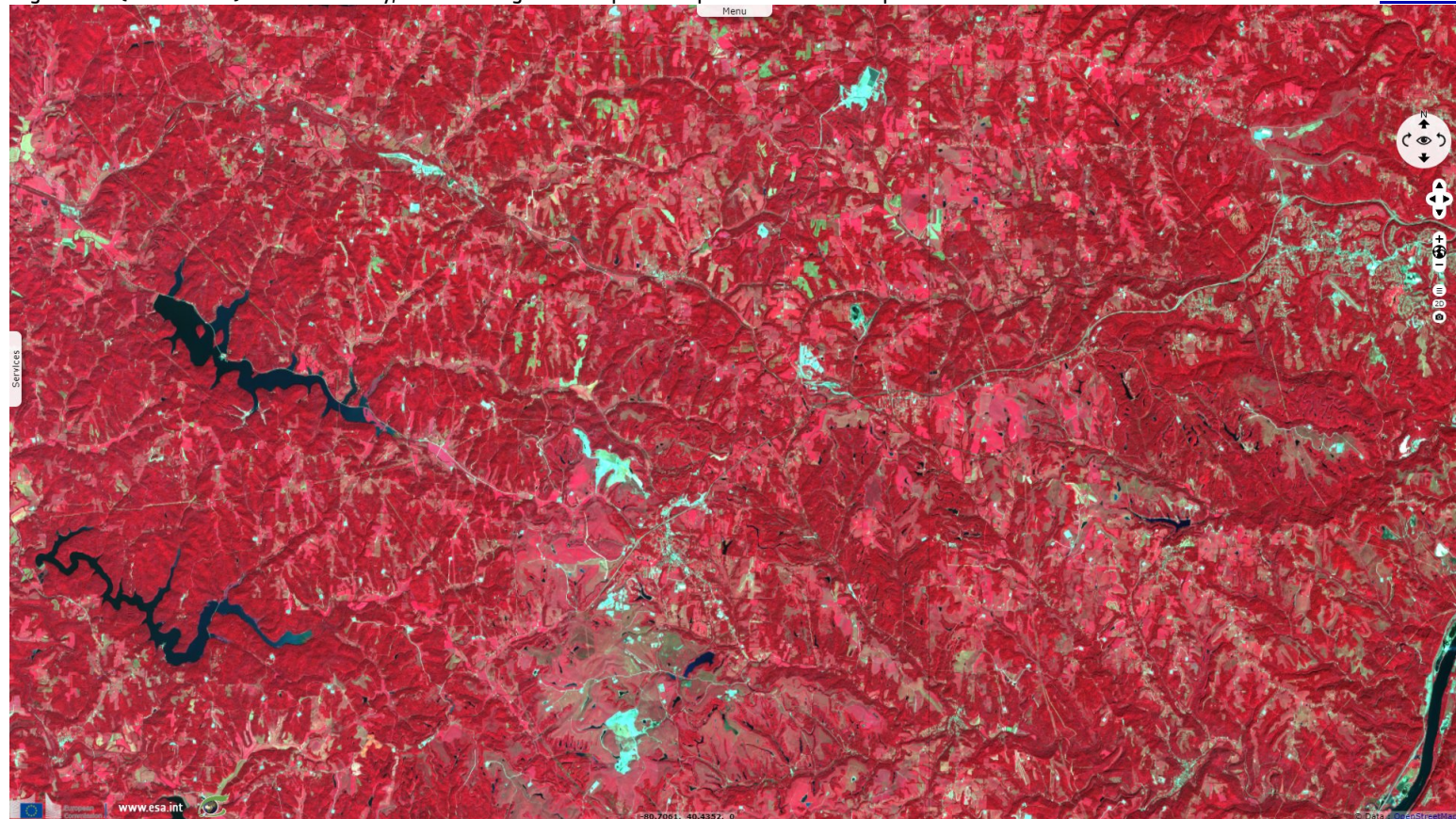
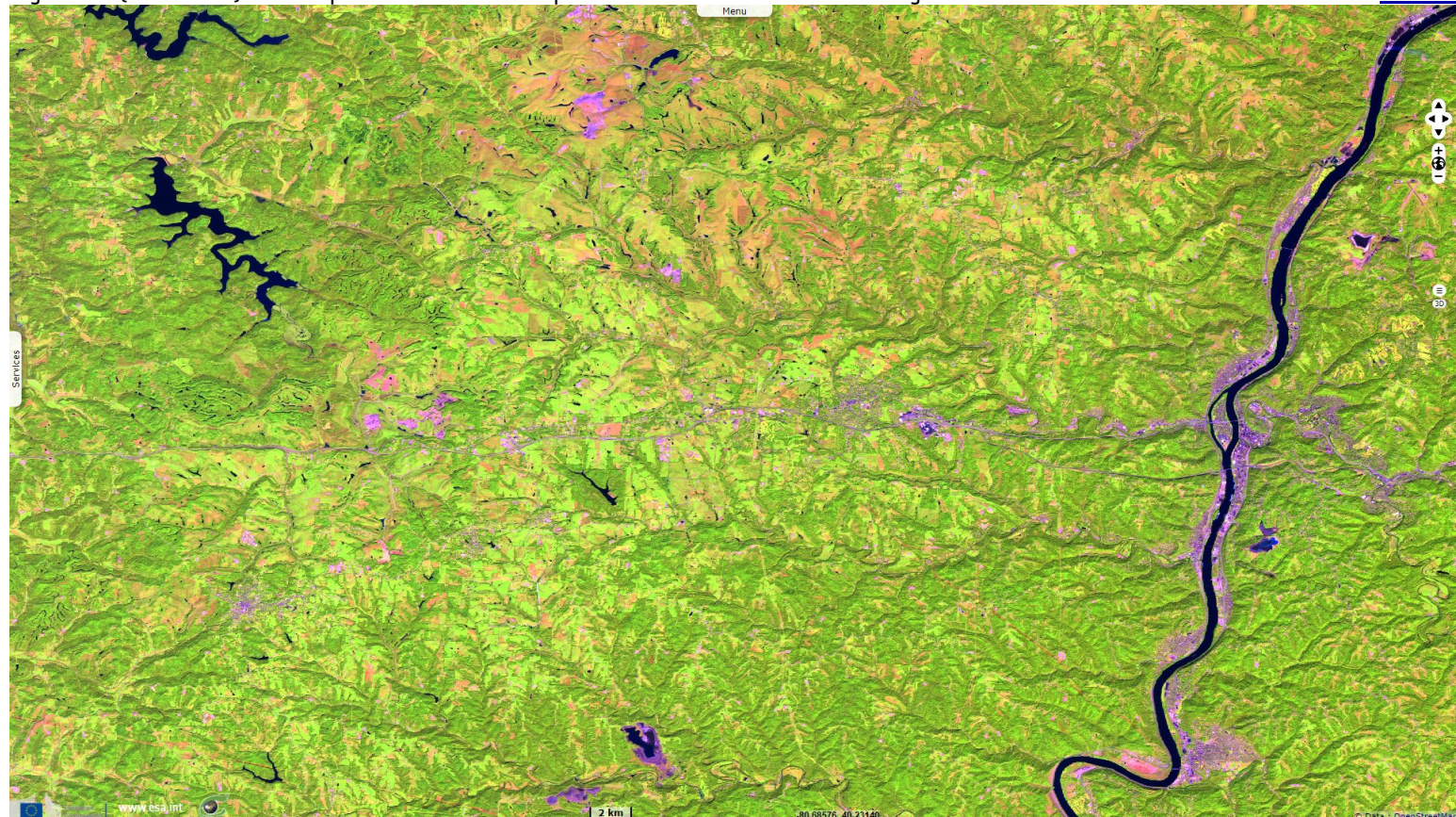
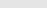


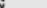
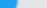

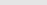
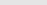
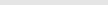
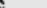
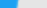



Fig. 4 - S2 (23.09.2020) - No US president has won the presidential elections without winning Ohio since 1964.

[2D view](#)



*The views expressed herein can in no way be taken to reflect the official opinion of the European Space Agency or the European Union.  
Contains modified Copernicus Sentinel data 2020, processed by VisioTerra.*

More on European Commission space:							
More on ESA:				<a href="#">S-1 website</a>	<a href="#">S-2 website</a>	<a href="#">S-3 website</a>	
More on Copernicus program:				<a href="#">Scihub portal</a>	<a href="#">Cophub portal</a>	<a href="#">Inthub portal</a>	<a href="#">Colhub portal</a>
More on VisioTerra:				<a href="#">Sentinel Vision Portal</a>	<a href="#">Envisat+ERS portal</a>	<a href="#">Swarm+GOCE portal</a>	<a href="#">CryoSat portal</a>