

Rwenzori range, natural barrier between Uganda & DRC

Sentinel-1 CSAR IW acquired on 23 December 2015 at 16:21:00 UTC

Sentinel-2 MSI acquired on 07 July 2018 at 08:06:09 UTC

Sentinel-1 CSAR IW acquired on 30 July 2018 at 03:44:23 UTC

Author(s): Sentinel Vision team, VisioTerra, France - syp@visioterra.fr

Keyword(s): Mountains, UNESCO World Heritage site, National Park, cryosphere, glacier, lake, Great rift valley, Uganda, DRC

[3D Layerstack](#)

Fig. 1 - S2 (07.07.2018) - Rwenzori Mountains are located between Lake Albert (north), Lake Edward (South) & Lake George at east. [2D view](#) [3D view](#)

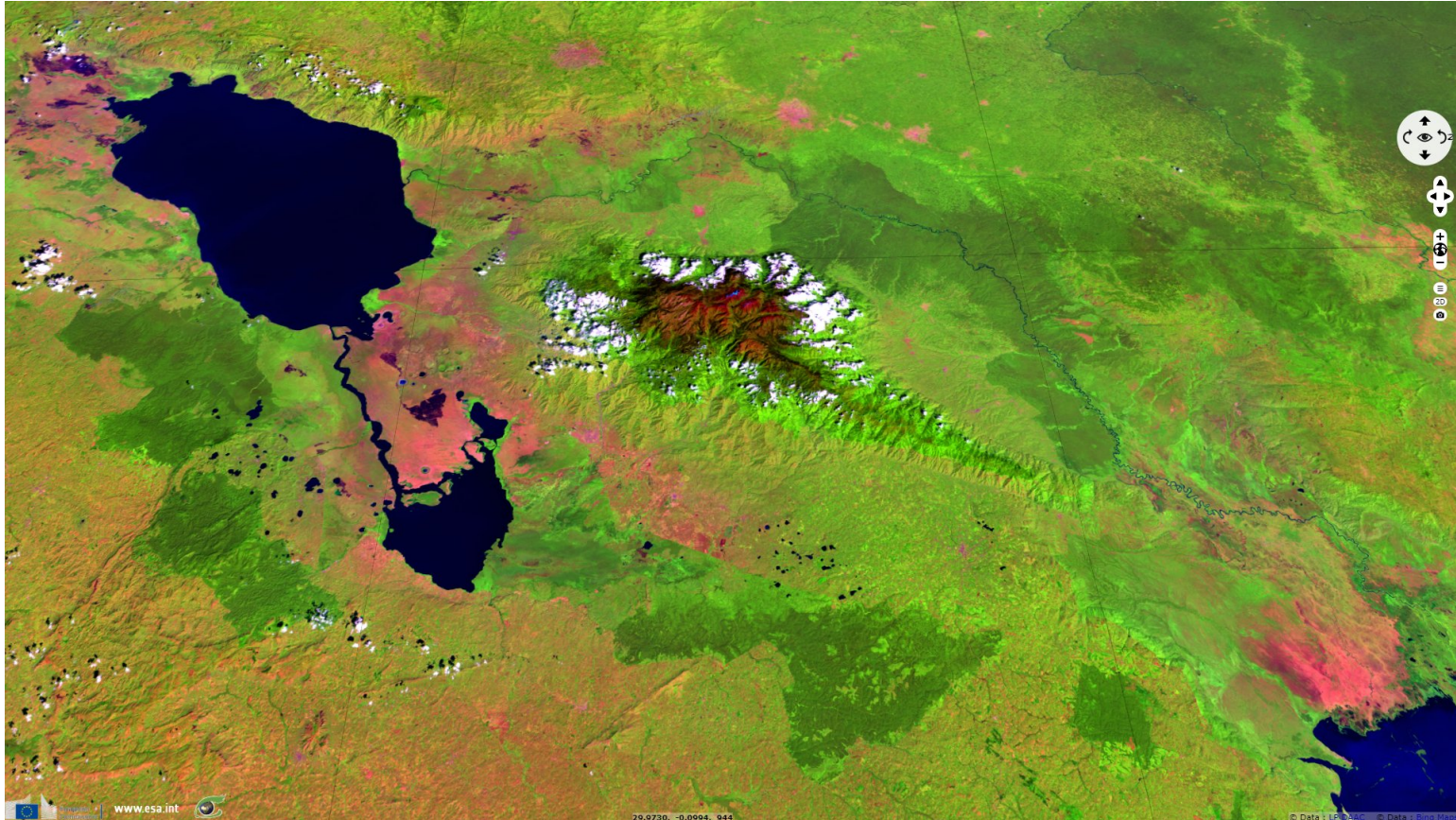
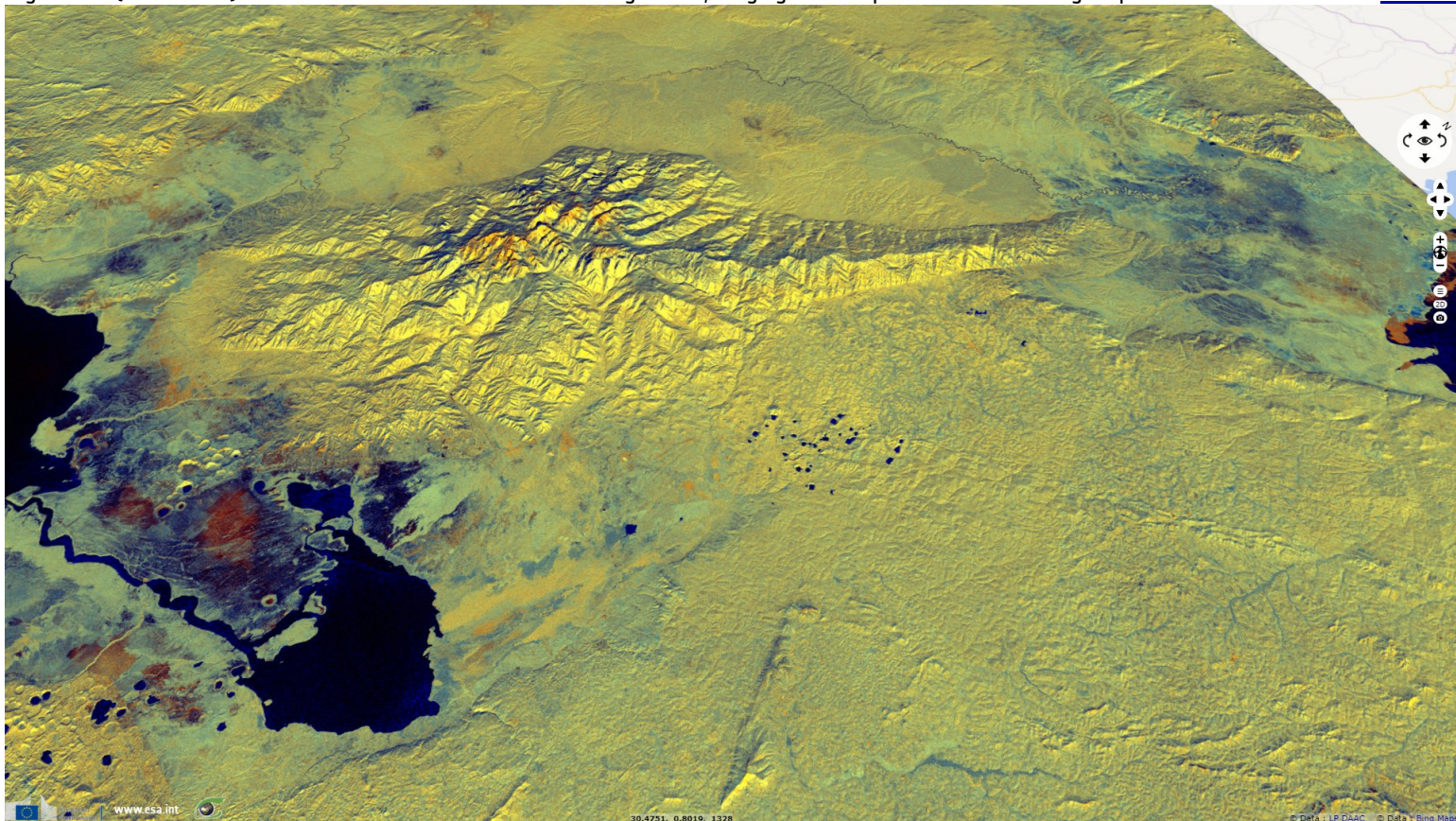


Fig. 2 - S1 (30.07.2018) - The Ruwenzori are known for their vegetation, ranging from tropical rainforest through alpine meadows to snow. [3D view](#)



Most of the range is a World Heritage Site, covered by Rwenzori Mountains National Park in SW Uganda & Virunga National Park in eastern DRC.

Fig. 3 - S1 (23.12.2015) - Semliki River flows north from Lake Edward to Lake Albert in the Albertine Rift west of the Rwenzori Mountains. [3D view](#)

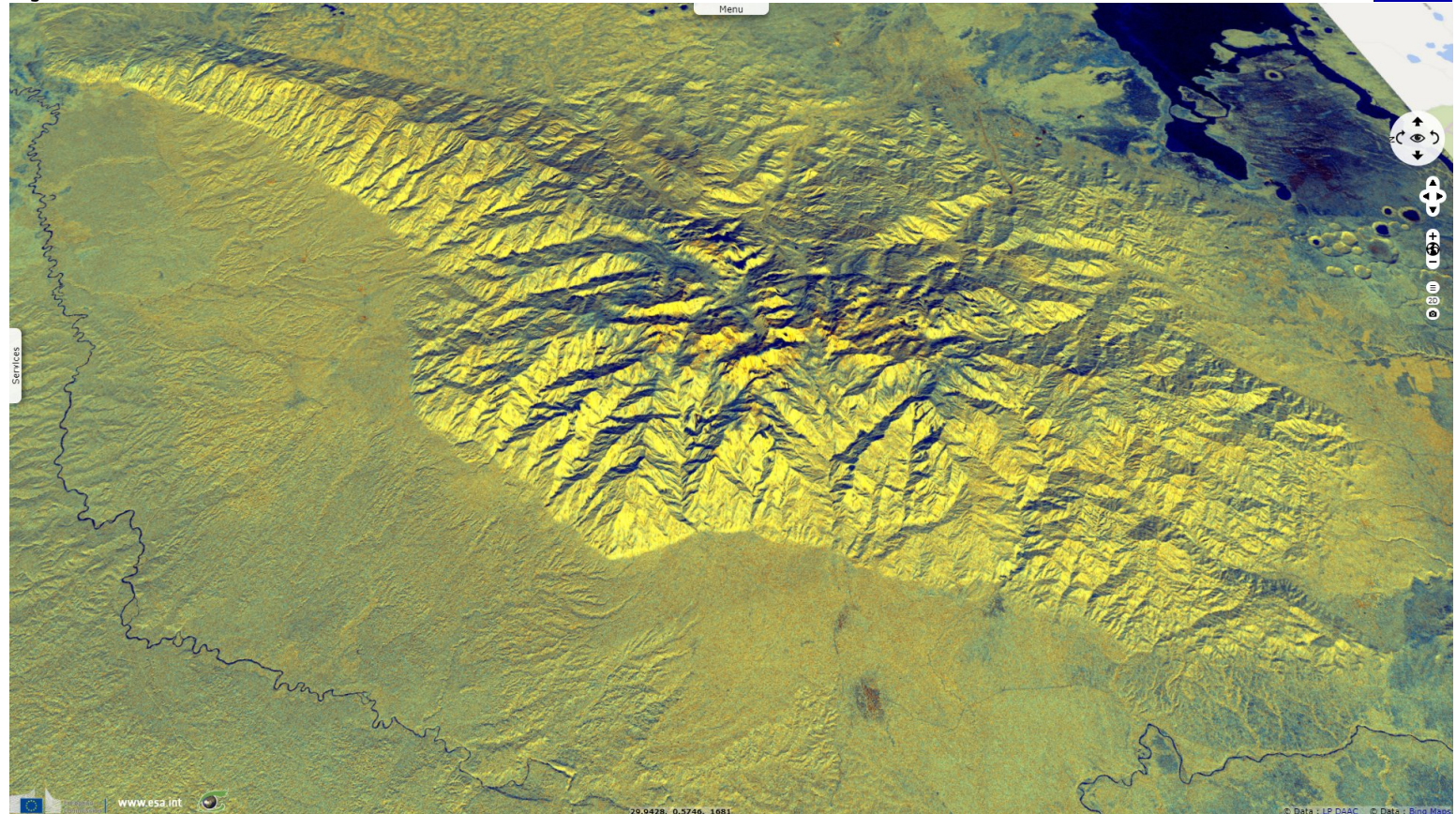
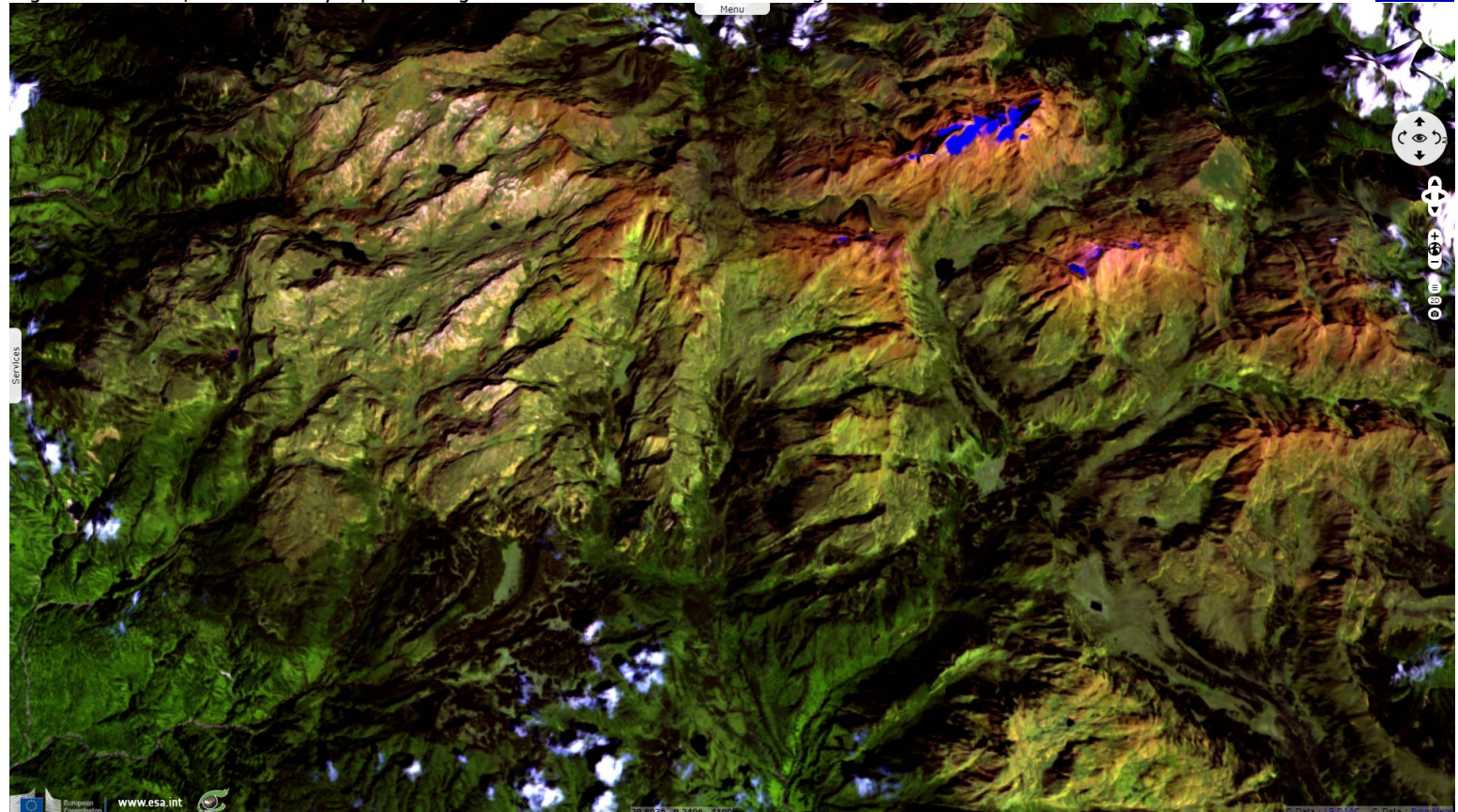


Fig. 4 - At 5109m, Mount Stanley tops the range which lost over half of its named glaciers & 80% of their surface between 1906 & 2005. [3D view](#)



*The views expressed herein can in no way be taken to reflect the official opinion of the European Space Agency or the European Union.
Contains modified Copernicus Sentinel data 2019, processed by VisioTerra.*

| | | | | | | |
|------------------------------------|--|--|--|--|------------------------------------|-----------------------------------|
| More on European Commission space: | | | | | | |
| More on ESA: | | | | S-1 website | S-2 website | S-3 website |
| More on Copernicus program: | | | | SciHub portal | COPERNICUS portal | InHub portal |
| More on VisioTerra: | | | | Sentinel Vision Portal | Envisat+ERS portal | Swarm+GOCE portal |