

# SRAL profiling Antarctica Peninsula

Sentinel-3 SRAL LAND acquired on 20 November 2016 at 03:42:28 UTC

...

Sentinel-3 SRAL LAND acquired on 20 December 2016 at 12:23:03 UTC

Author(s): Sentinel Vision team, VisioTerra, France - [svp@visioterra.fr](mailto:svp@visioterra.fr)

Keyword(s): climate change, coastal, polar, sea ice, land ice, altimetry, range, cryosphere, Antarctica Peninsula



[3D Layerstack](#)

Fig. 1 - Corrected ocog altimeter range in 20Hz C-band using negative scale and positive offset.

[3D view](#)

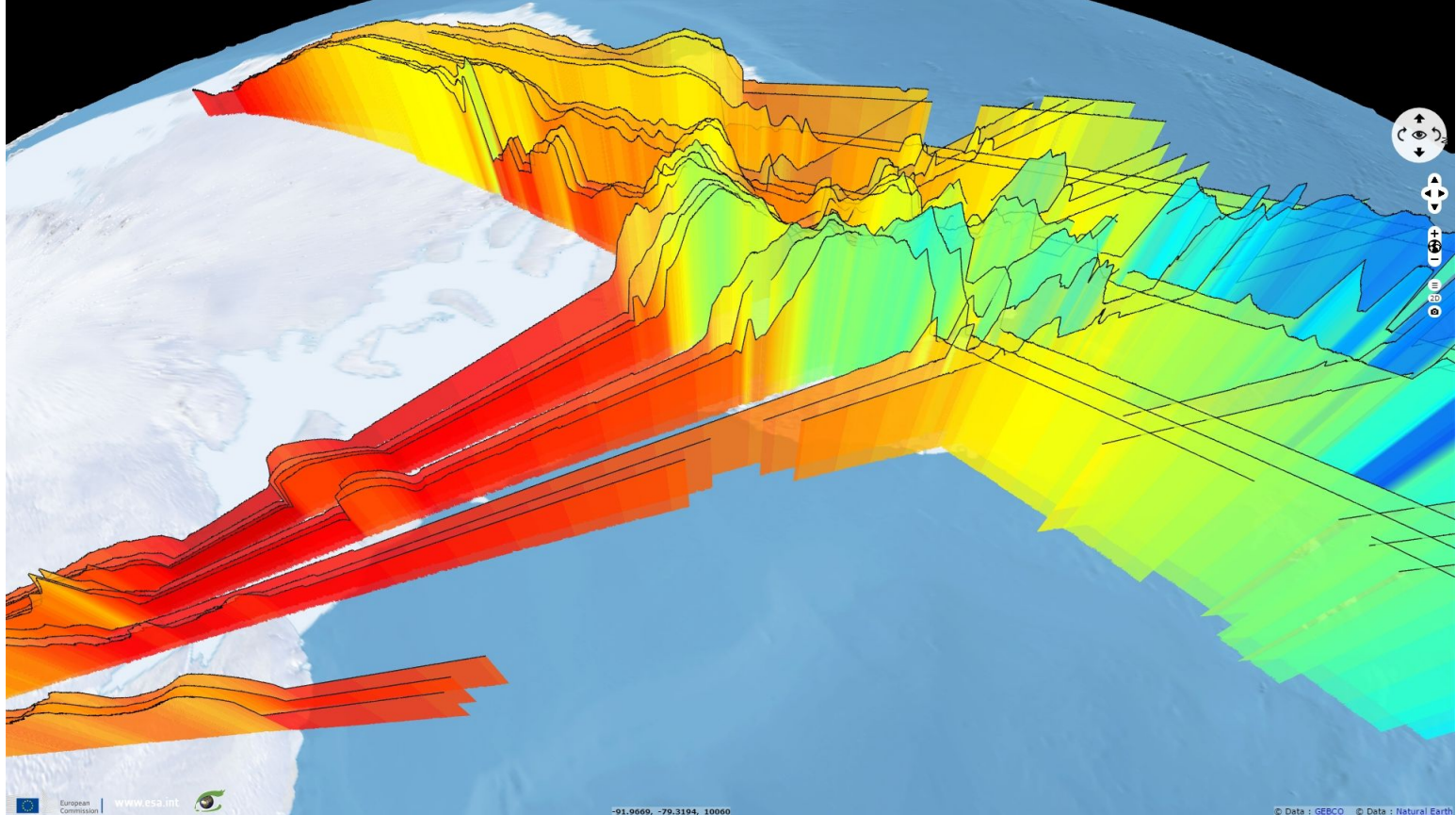


Fig. 2 - Ground altitude contributes negatively to the range. Red indicates higher range, blue indicates lower range.

[3D view](#)

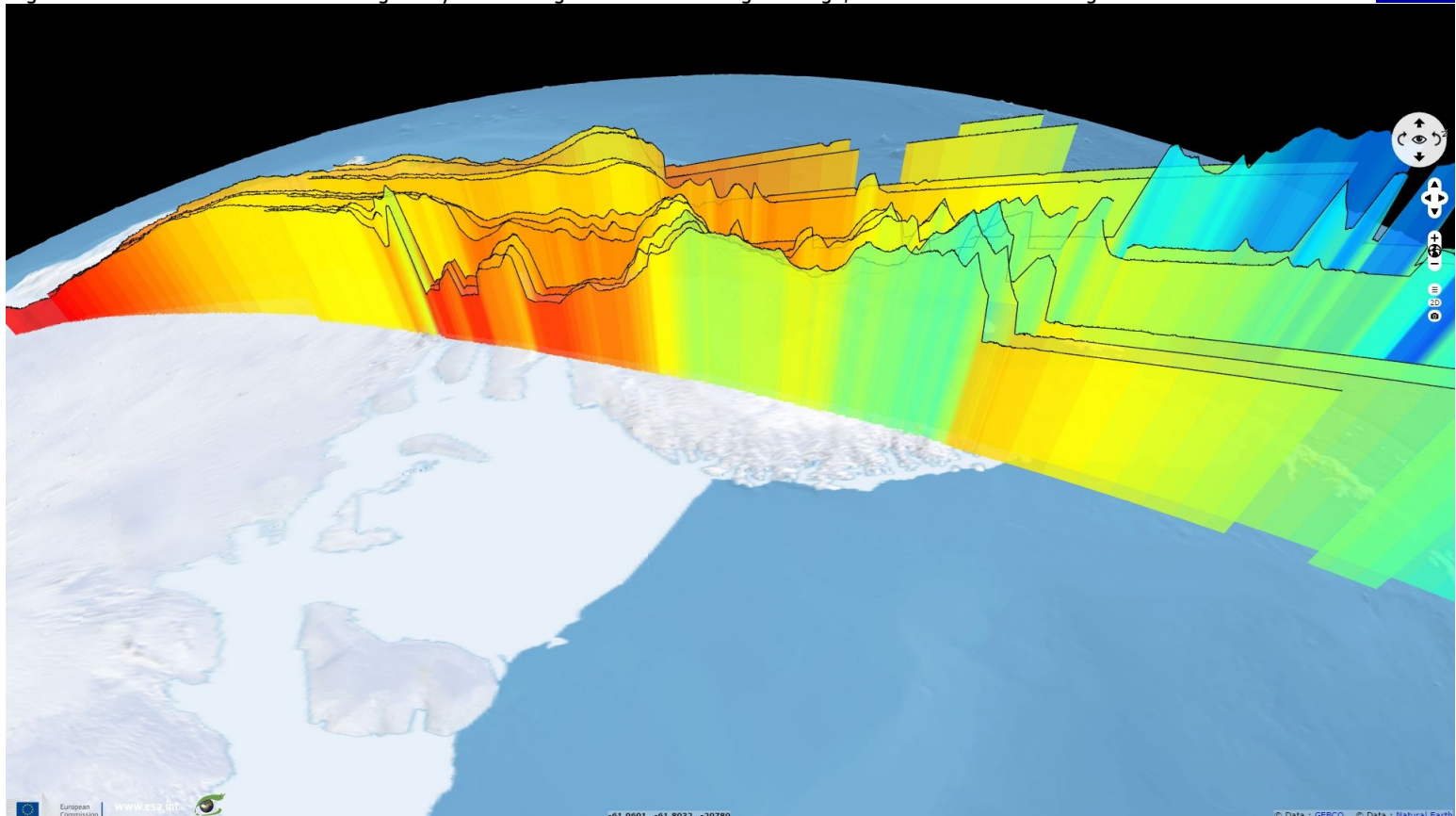
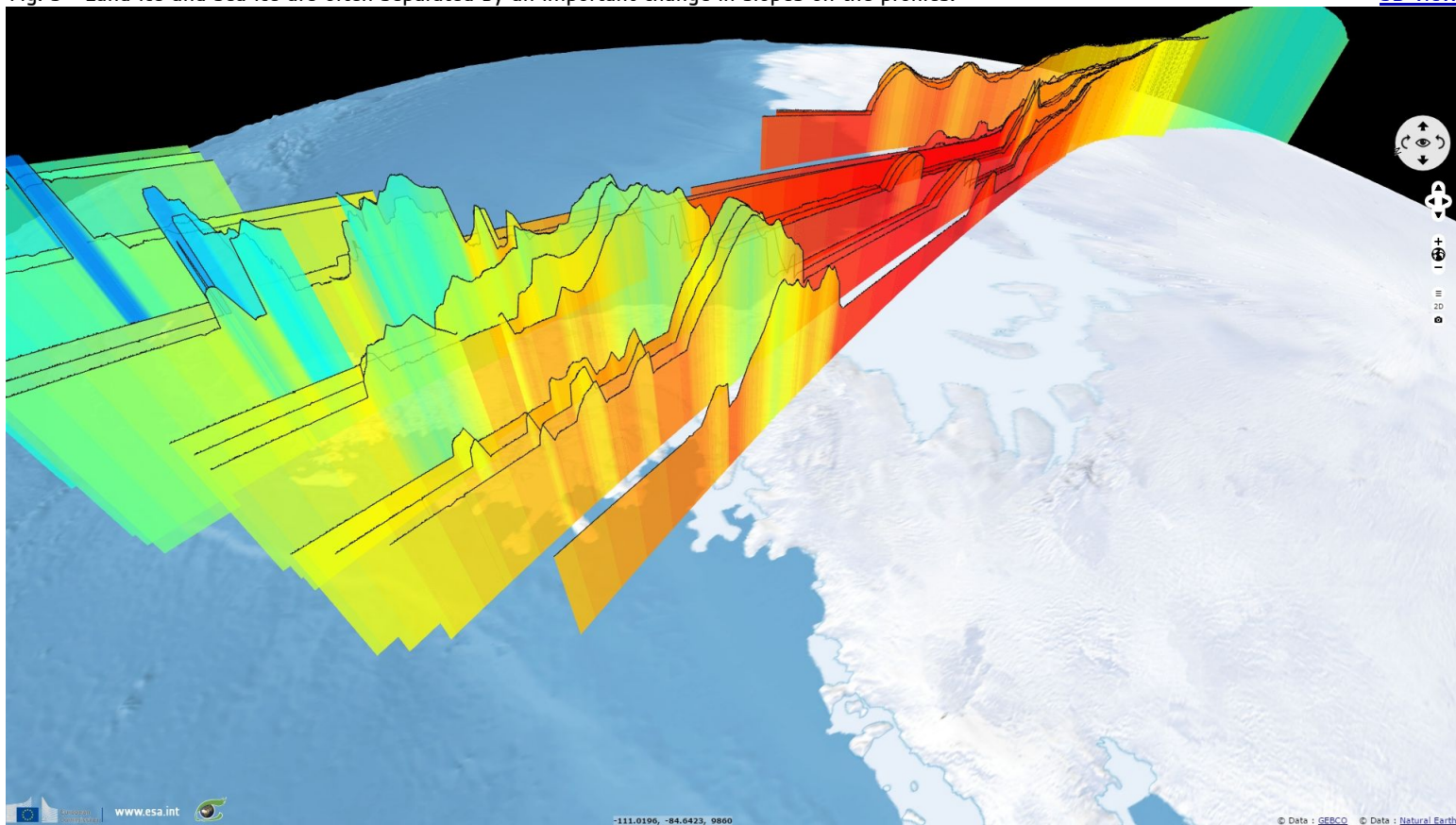


Fig. 3 - Land ice and sea ice are often separated by an important change in slopes on the profiles.

[3D view](#)



*The views expressed herein can in no way be taken to reflect the official opinion of the European Space Agency or the European Union.*

More on European Commission space:								
More on ESA:				<a href="#">S-1 website</a>	<a href="#">S-2 website</a>	<a href="#">S-3 website</a>		
More on Copernicus program:				<a href="#">SciHub portal</a>	<a href="#">CopHub portal</a>	<a href="#">Inthub portal</a>	<a href="#">Colhub portal</a>	
More on VisioTerra:				<a href="#">Sentinel Vision Portal</a>	<a href="#">Envisat+ERS portal</a>	<a href="#">Swarm+GOCE portal</a>	<a href="#">CryoSat portal</a>	<a href="#">Proba-V portal</a>



Funded by the EU and ESA

SED-020-SentinelVision

