

Oak Fire, first Californian megafire of the 2022 season, USA

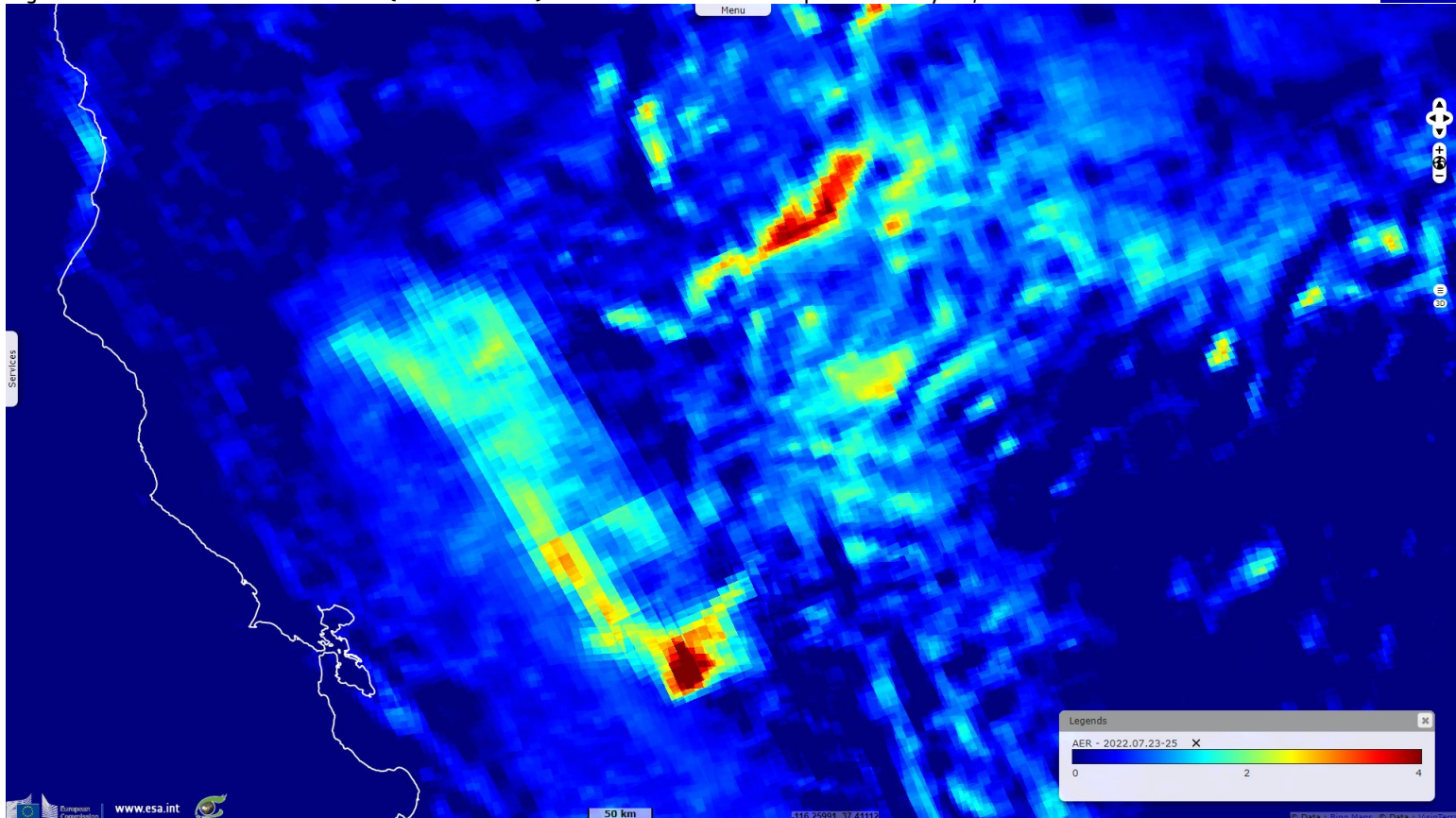
Sentinel-2 MSI acquired on 20 July 2022 at 18:39:31 UTC
Sentinel-5P TROPOMI AER_AI & CO acquired on 23 July 2022 at 20:21:11 UTC
...
Sentinel-5P TROPOMI AER_AI & CO acquired on 25 July 2022 at 21:26:12 UTC
Sentinel-2 MSI acquired on 30 July 2022 at 18:39:31 UTC

Author(s): Sentinel Vision team, VisioTerra, France - svp@visioterra.fr

Keyword(s): Land, forestry, emergency, wildfire, air quality, National Park, United States, USA

Fig. 1 - S5P TROPOMI - Aerosol Index (23-25.07.2022) - The Oak Fire was first reported on July 22, 2022.

[2D view](#)



It is the first Californian fire of the 2022 season powerful enough to fuel a pyrocumulonimbus. By the morning of July 24, the third day of the fire, 2093 personnel were battling the fire, according to Cal Fire. This included 17 helicopters, 225 fire engines, and 58 bulldozers to create firebreaks. 168 buildings have been destroyed. Fortunately, no severe injuries or deaths have been reported so far.

Fig. 2 - Carbon monoxide (23-27.07.2022) - While firemen sent much resources very quickly, they were outflanked from the first day. [2D view](#)

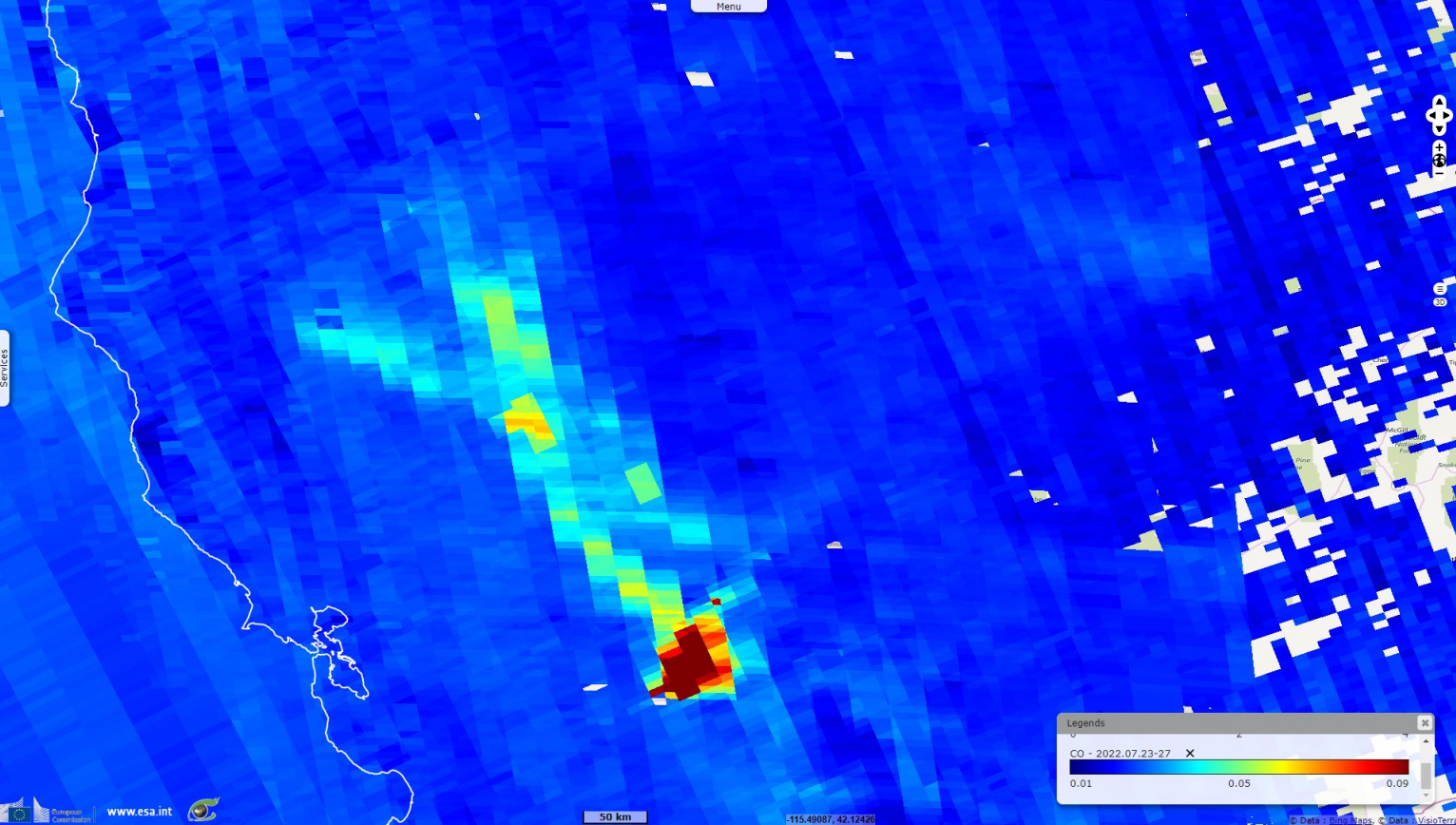
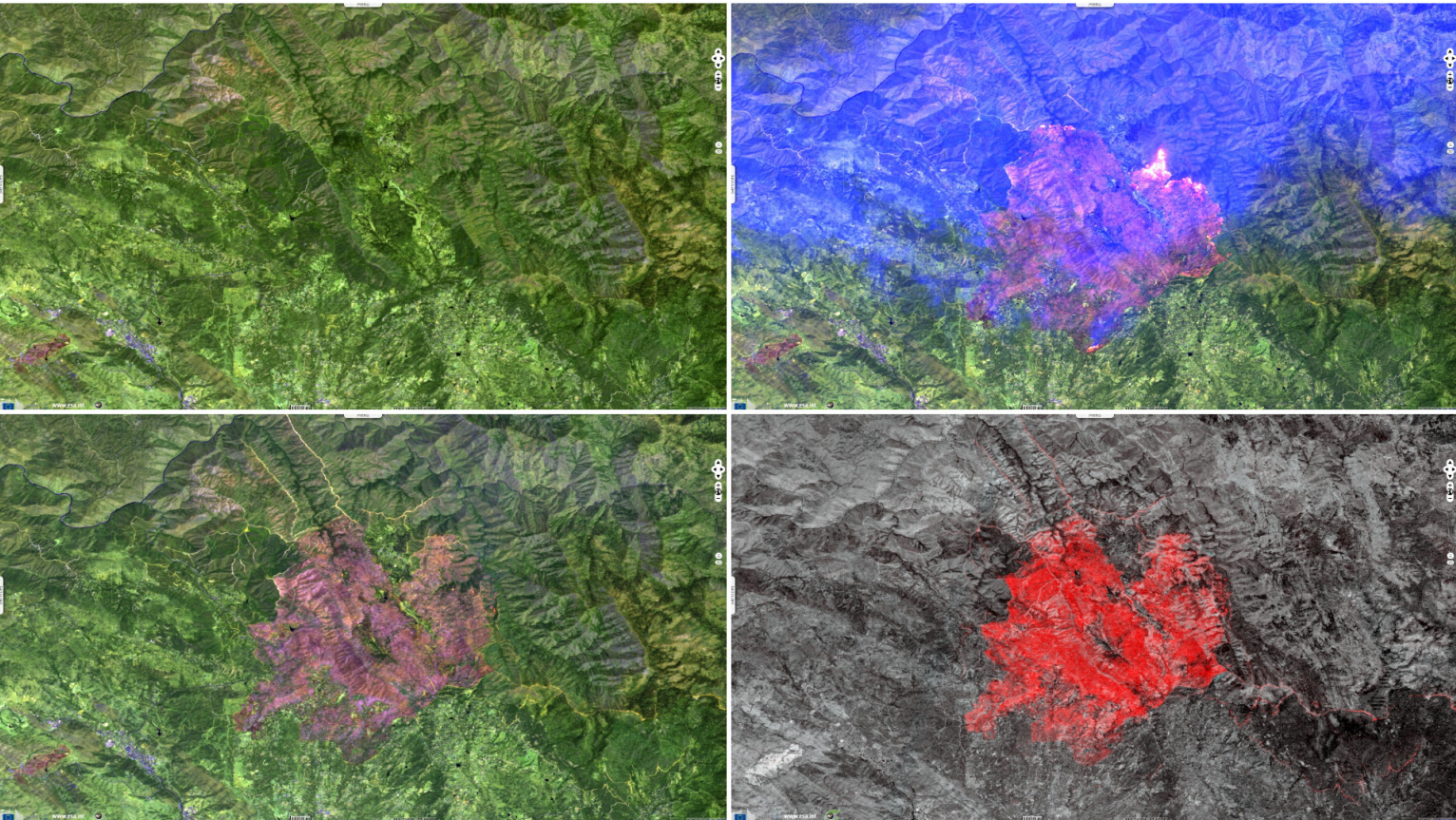









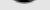
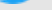



Fig. 3 - S2 (20, 25 & 30.07.2022) - 7788 km² have burnt in Sierra National Forest, near Yosemite National Park. [2D view](#) [2D view](#) [2D view](#) [2D view](#)



The views expressed herein can in no way be taken to reflect the official opinion of the European Space Agency or the European Union.
Contains modified Copernicus Sentinel data 2022, processed by VisioTerra.

More on European Commission space:							
More on ESA:				S-1 website	S-2 website	S-3 website	
More on Copernicus program:				Scihub portal	Cophub portal	Inthub portal	Colhub portal
More on VisioTerra:				Sentinel Vision Portal	Envisat+ERS portal	Swarm+GOCE portal	CryoSat portal