

Ouagadougou & Bāngr-Weoogo Urban Park

Sentinel-1 CSAR IW acquired on 11 October 2017 at 18:19:36 UTC

Sentinel-2 MSI acquired on 17 October 2017 at 10:30:21 UTC

Sentinel-2 MSI acquired on 20 January 2019 at 10:33:41 UTC

Sentinel-1 CSAR IW acquired on 22 January 2019 at 18:19:40 UTC

Author(s): Sentinel Vision team, VisioTerra, France - svp@visioterra.fr

Keyword(s): Urban, land, Ramsar wetland, biodiversity, park, savannah, forest, pond, reservoir lake, Burkina Faso



[2D Layerstack](#)

Fig. 1 - S2 (17.10.2017) - 11,8,2 composite - Ouagadougou, capital of Burkina Faso, grew from 4 000 inhabitants in 1904 to 2 500 000 today. [2D view](#)

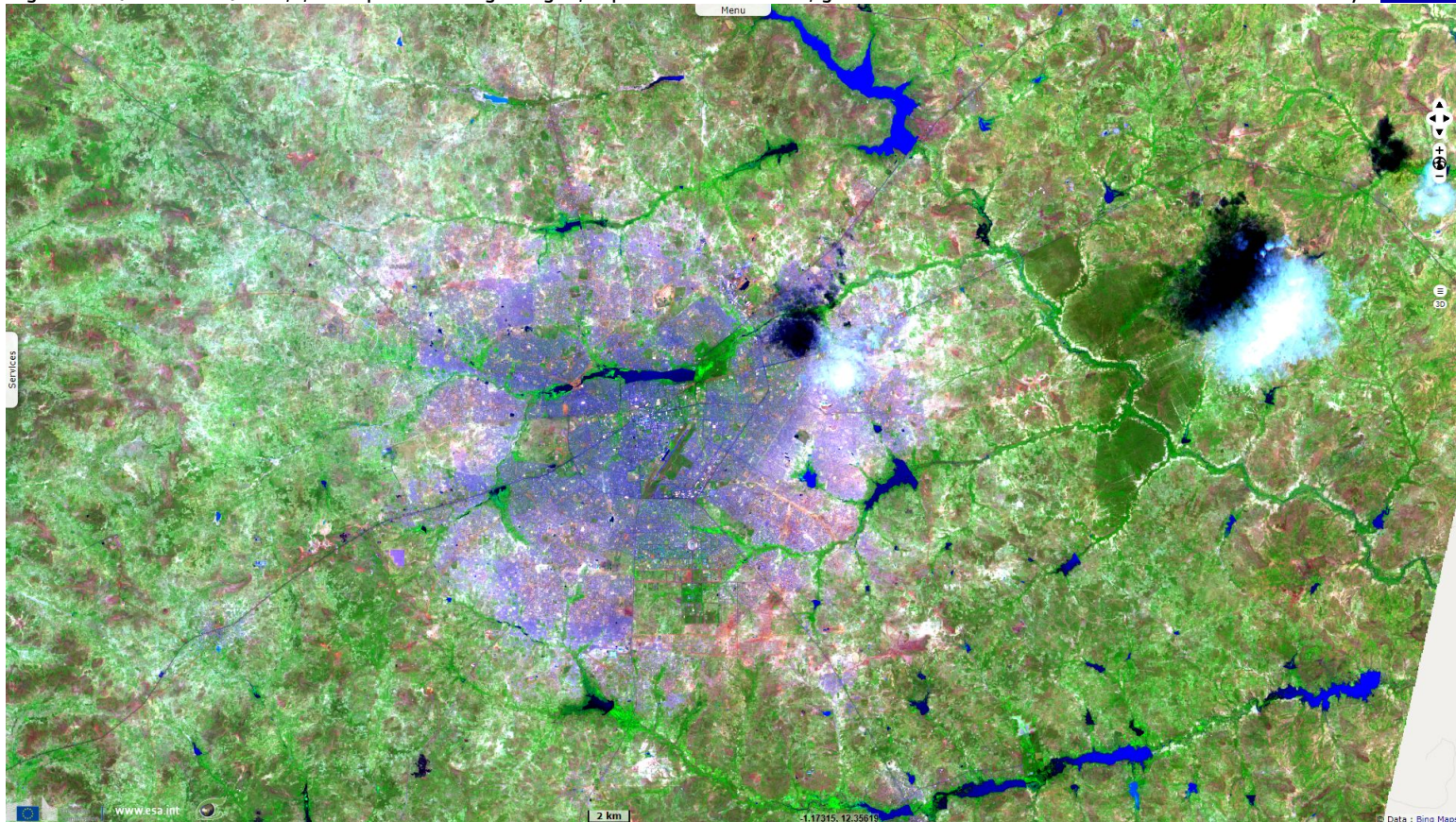


Fig. 2 - S2 (20.01.2019) - 11,8,2 colour composite - During the dry season, most of its vegetation dries up, leaving the bare soil visible. [2D view](#)

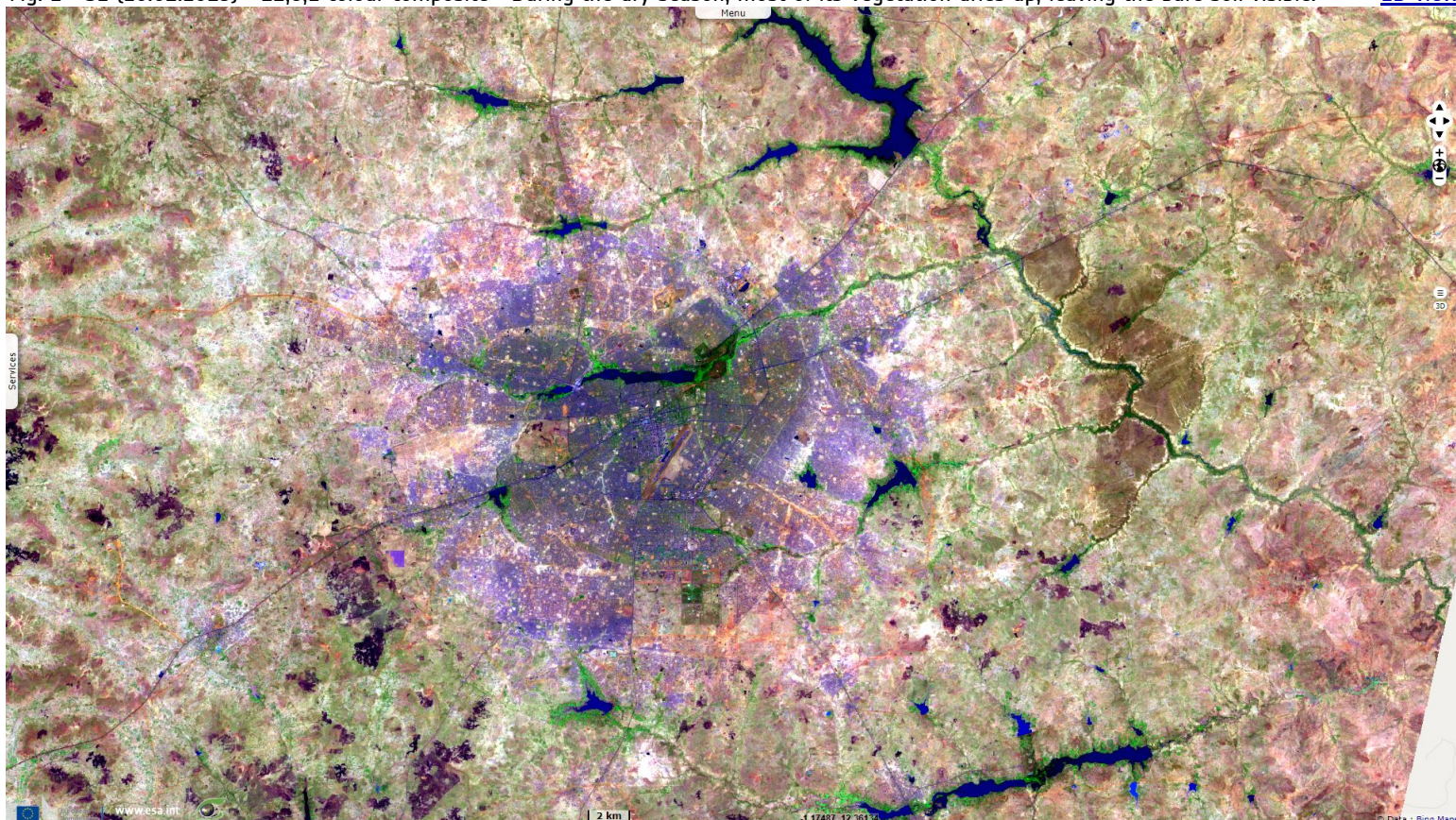


Fig. 3 - S1 (11.10.2017) - vv,vh,vv colour composite - The city shelters the 945 ha Bāngr-Weogo Urban Park and the 3 reservoirs & dams. [2D view](#)

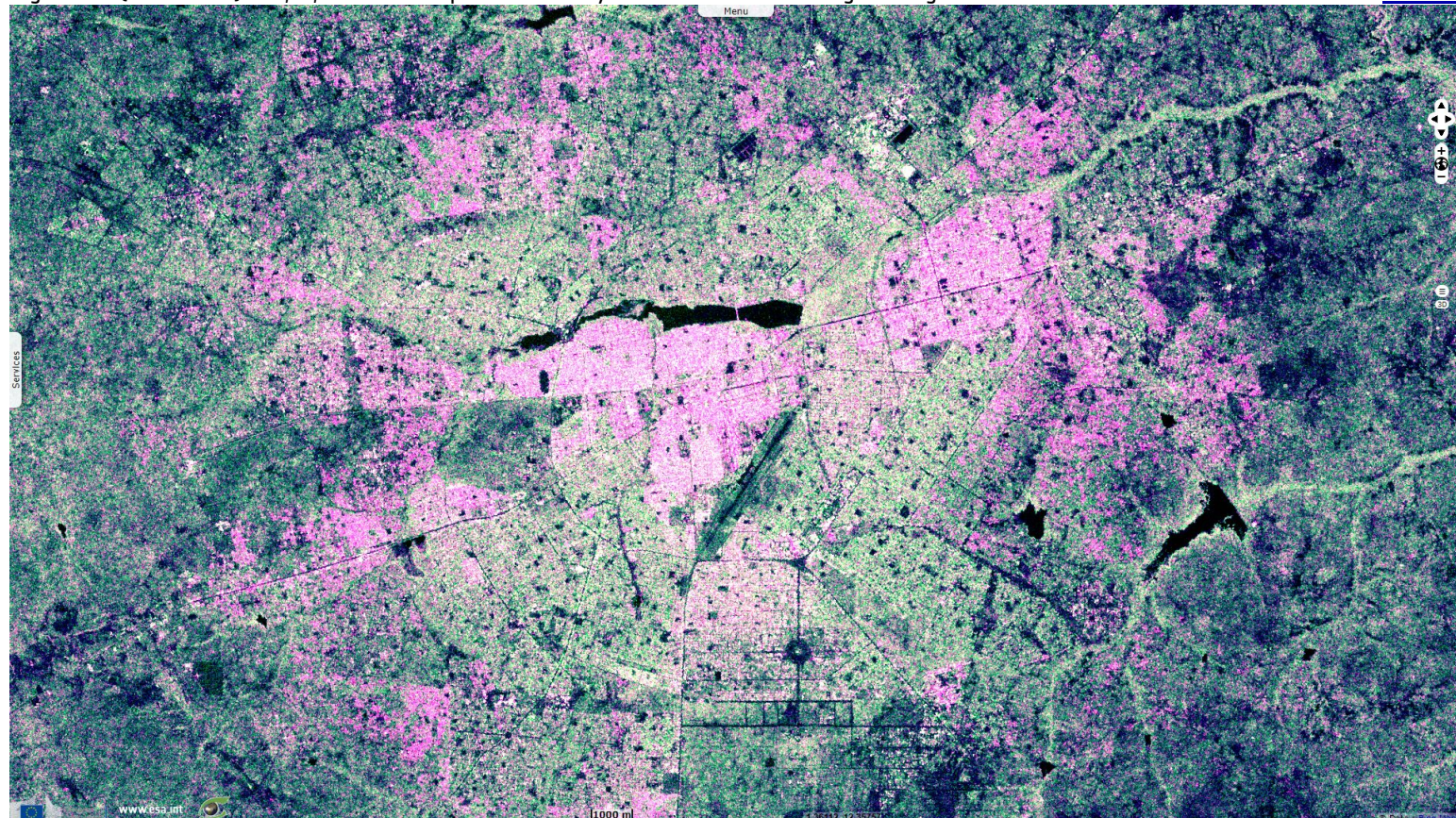
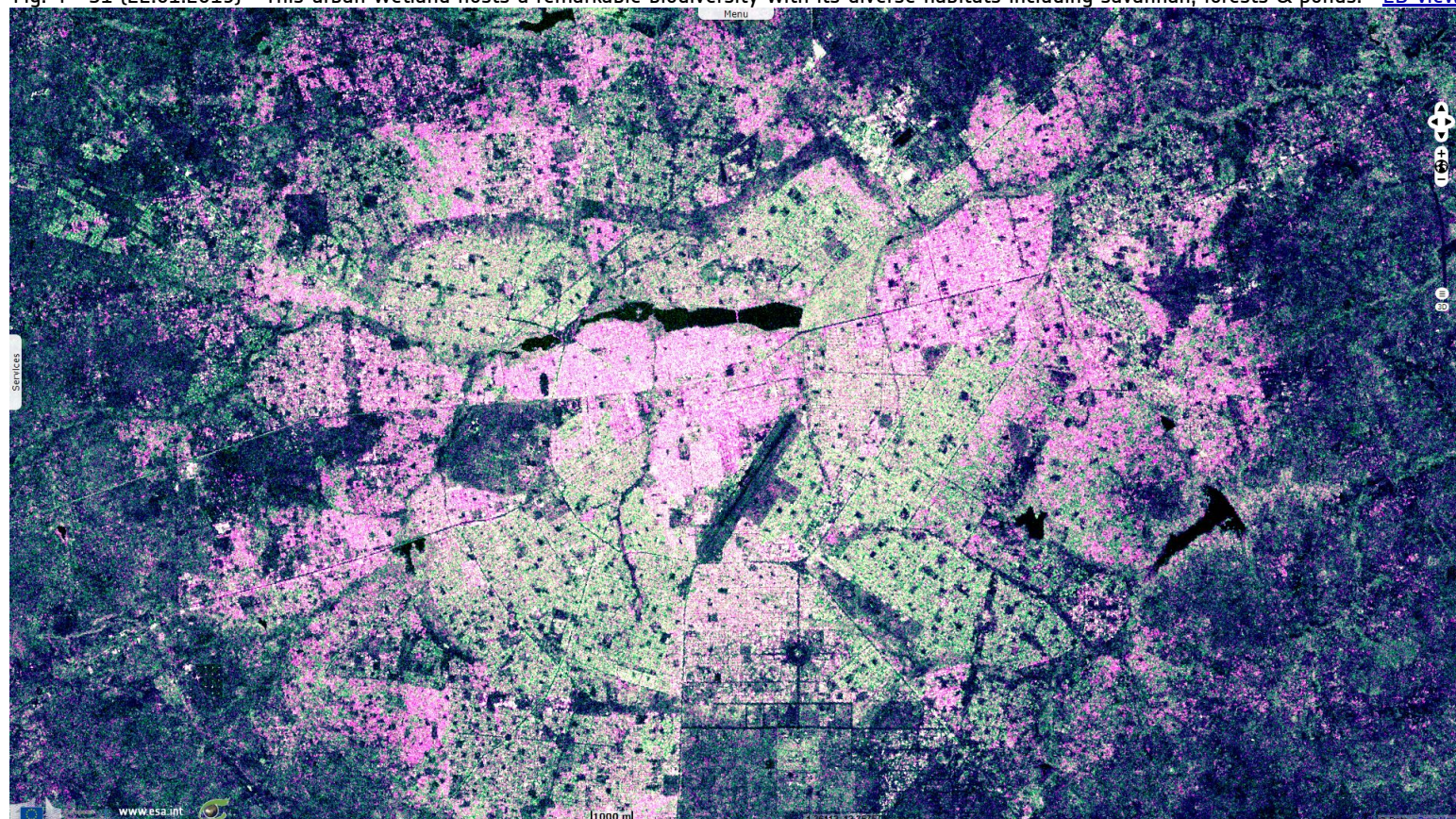


Fig. 4 - S1 (22.01.2019) - This urban wetland hosts a remarkable biodiversity with its diverse habitats including savannah, forests & ponds. [2D view](#)



*The views expressed herein can in no way be taken to reflect the official opinion of the European Space Agency or the European Union.
Contains modified Copernicus Sentinel data 2019, processed by VisioTerra.*

More on European Commission space:						
More on ESA:				S-1 website	S-2 website	S-3 website
More on Copernicus program:				SciHub portal	Cophub portal	Inthub portal
More on VisioTerra:				Sentinel Vision Portal	Envisat+ERS portal	Swarm+GOCE portal
					CryoSat portal	