

US-Mexico border

Sentinel-1 CSAR IW acquired on 18 August 2015 at 01:49:11 UTC

Sentinel-2 MSI (4 tiles) acquired on 01 May 2017 at 18:33:11 UTC

Sentinel-2 MSI (1 tile) acquired on 04 May 2017 at 18:29:21 UTC

Author(s): Sentinel Vision team, VisioTerra, France - svp@visioterra.fr

Keyword(s): United States, Mexico, border, wall, California, immigration, land use, vegetation, irrigation, urban

[2D Layerstack](#)

Fig. 1 - Combined view of S1 and S2 images over US (California)-Mexico (Baja California Norte) border.

[2D view](#)

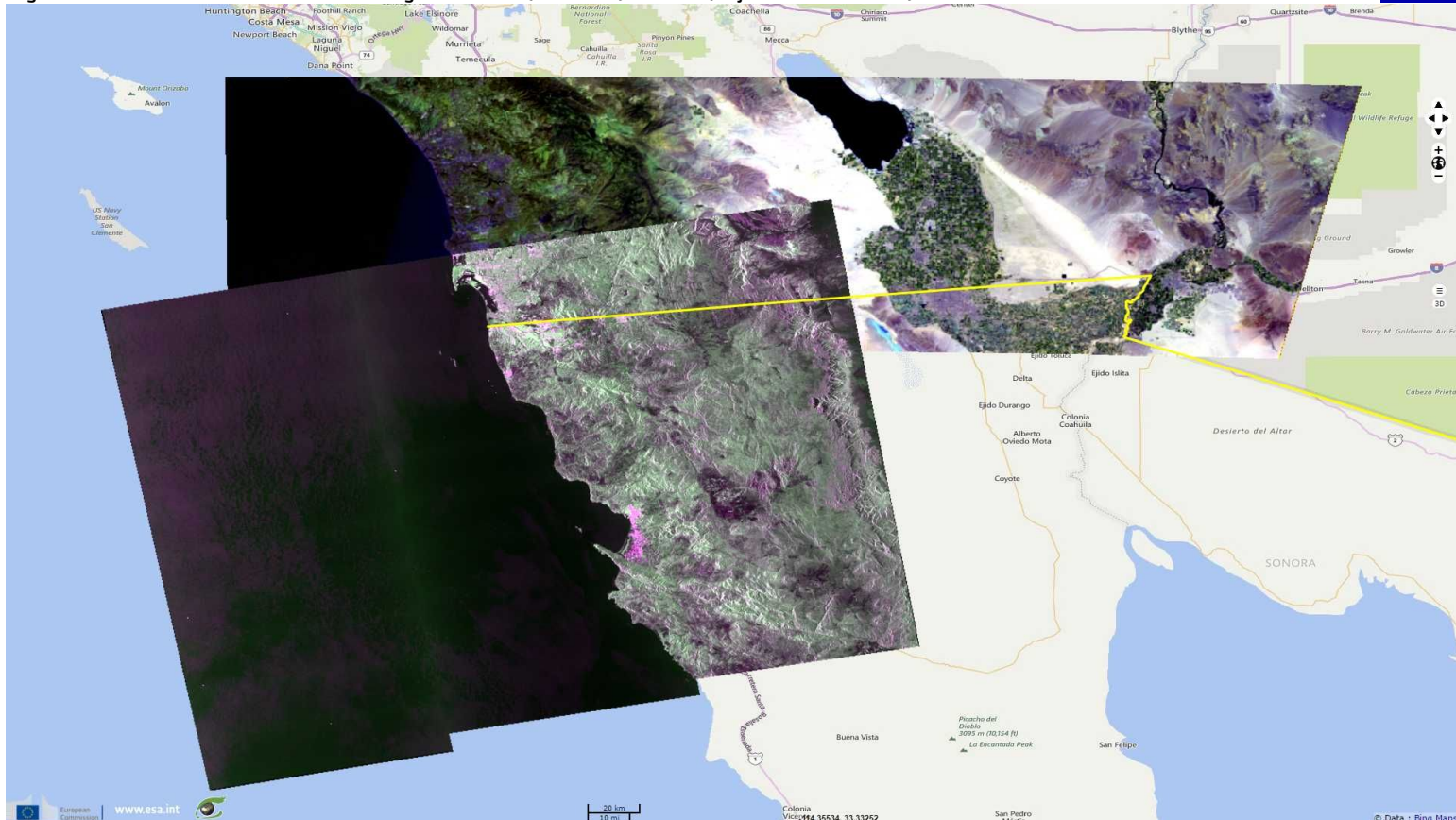


Fig. 2 - Sentinel 2A MSI (01.05.2017) showing the contrast of the vegetation health between US and Mexico - 12-11-4 colour composite.

[2D view](#)

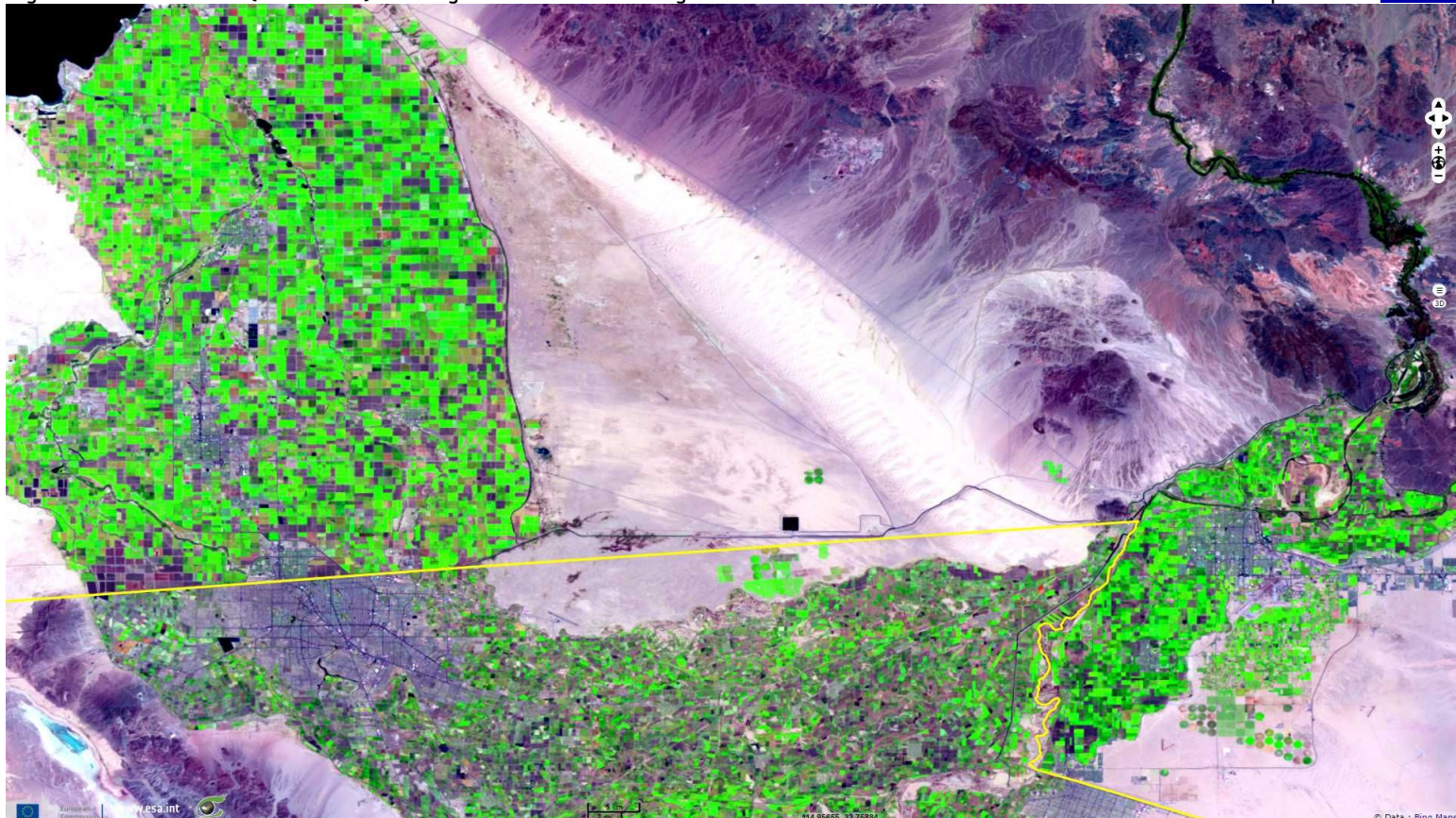


Fig. 3 - Sentinel 2A MSI (01.05.2017) acquired near to Tecate (Mexico) - 12-11-4 colour composite.

[2D view](#)

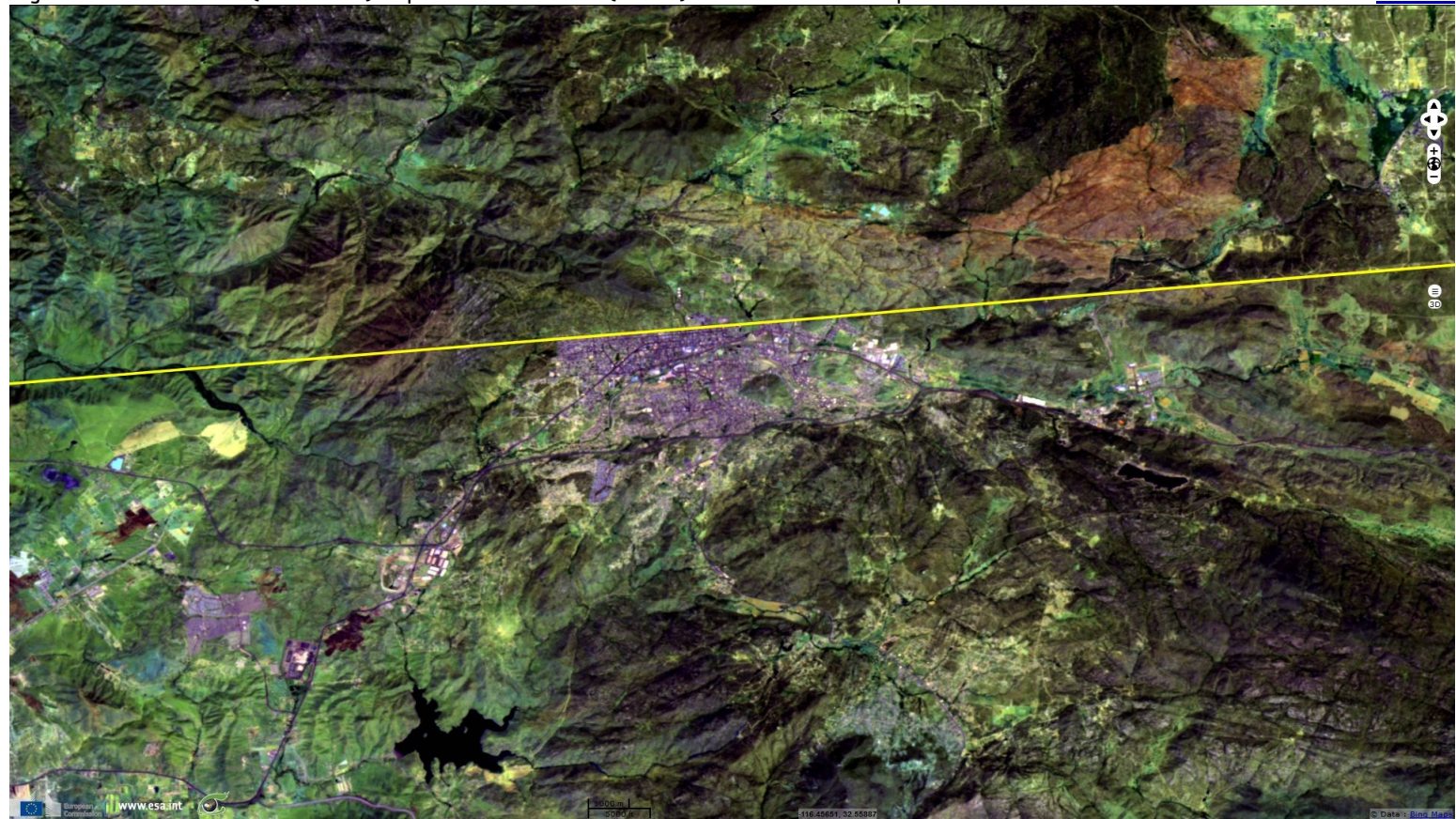


Fig. 4 - Sentinel 1A IW near Tecate (Mexico) - VV-VH-VV colour composite.

[2D view](#)

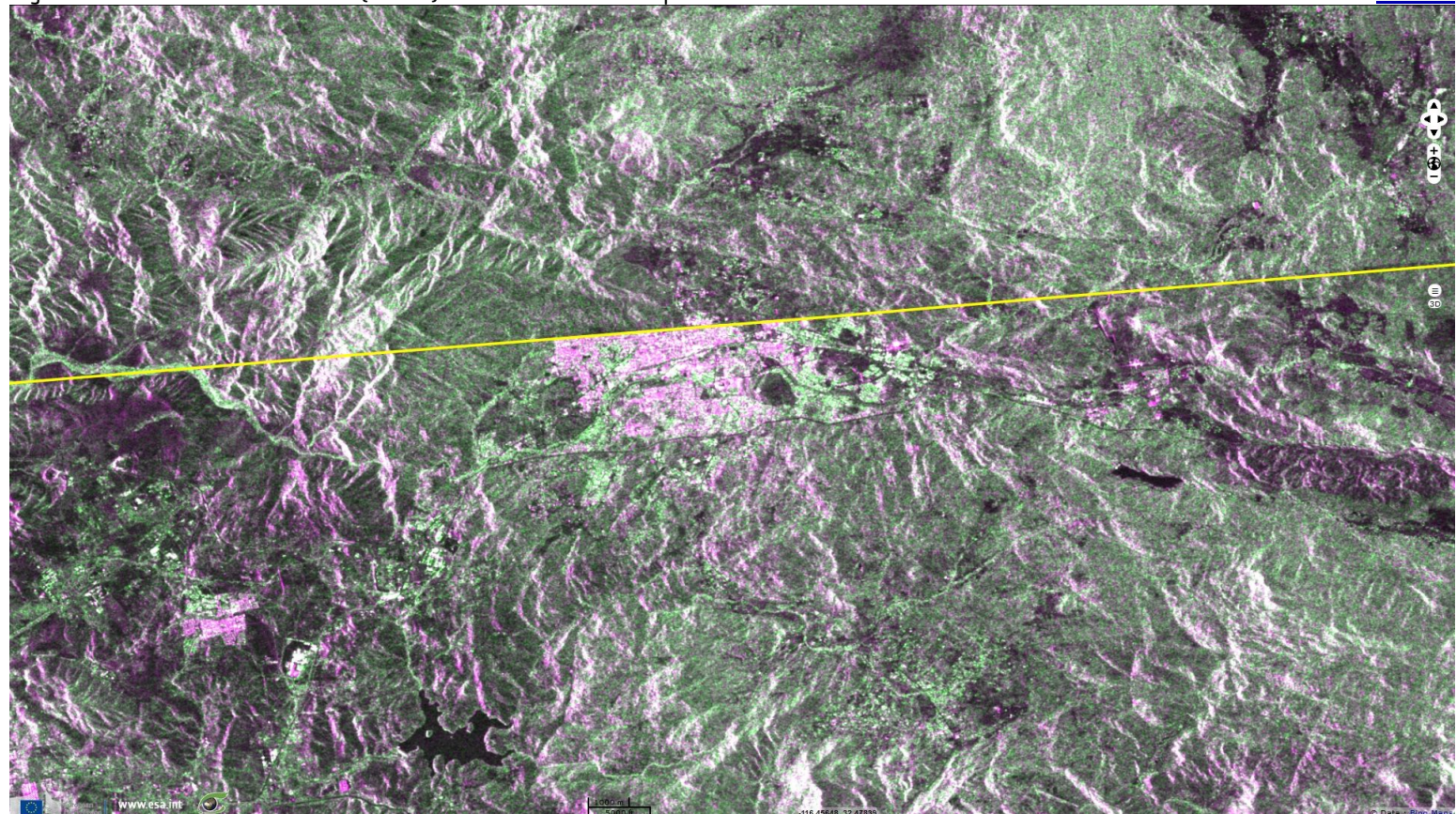


Fig. 5 - Sentinel 2A MSI (04.05.2017) acquired on the US-Mexico border near to Tijuana-San Diego - 12-11-4 colour composite.

[2D view](#)

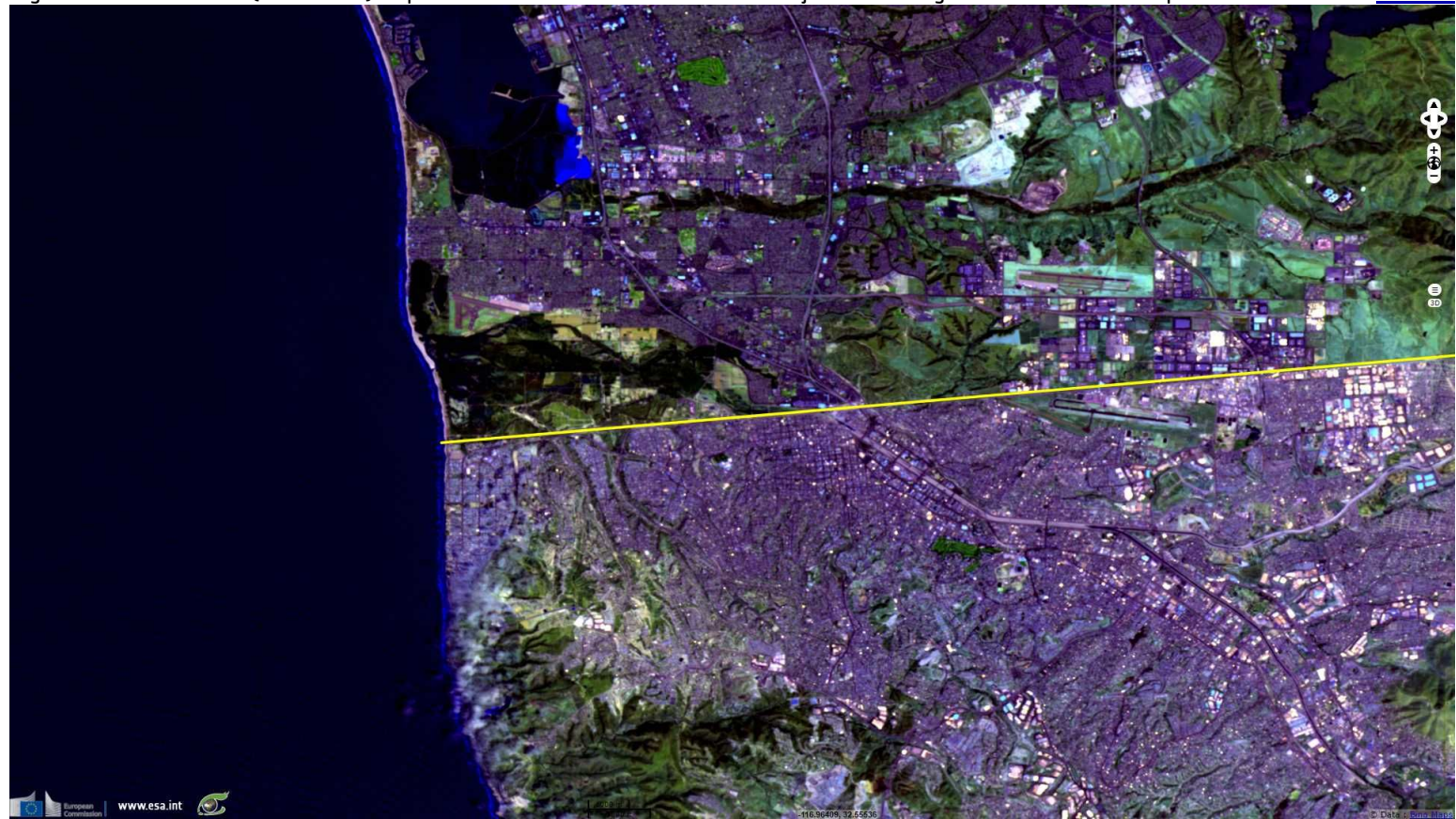


Fig. 6 - Sentinel 1A IW on the US-Mexico border near Tijuana-San Diego - VV-VH-NDI(VH,VV) colour composite.

[2D view](#)



Fig. 7 - Sentinel 2A MSI (01.05.2017) acquired on the US-Mexico border wall - 12-11-4 colours composite.

[2D view](#)



Fig. 8 - Photograph of the US-Mexico border.



Fig. 9 - Wall on the border between the US and Mexico near the Mexican city of Tijuana (photograph by Paula Cabrera).



The Mexico–United States border is an international border separating Mexico and the United States. The border extends from the Pacific Ocean in the West to the Gulf of Mexico to the East and traverses a variety of terrains, ranging from major urban areas to uninhabitable deserts. As of 2010 approximately 350 million legal crossings occur annually, and is the most frequently crossed border in the world.

According to [National Geographic](#): "The border between the United States and Mexico stretches 3,145 kilometers (1,954 miles). One of the most strongly fortified areas of the border separates the urban areas of San Diego, in the U.S. state of California, and Tijuana, in the Mexican state of Baja California. Here, the border is marked with double and even triple fencing. The first fence, pictured above, is about 3 meters (10 feet) tall, and made of thick metal plates. The second fence, behind the first one, reaches 4.5 meters (15 feet). The top is angled inward, with barbed wire at the top. In some areas, there is a smaller chain-link fence behind the second one. In between the fences is "no-man's land," an area that the U.S. Border Patrol monitors with bright lights, armored trucks, and cameras.













[National Geographic](#) comments: "Crossing the border near Tijuana-San Diego is dangerous. The crosses in this photograph represent the hundreds of men, women, and children who have died in the area while trying to reach the United States.

Most immigrant deaths in the Tijuana-San Diego area are due to exposure. Exposure is simply being exposed to severe weather. The Sonoran Desert receives very little precipitation. It is very hot during the day, with few trees to provide shade. The desert is also very cold at night. Immigrants who are not prepared with adequate water, protection from the sun, and warm clothing are at risk for dehydration, heat stroke, or hypothermia.

The phrase "Ni Una Muerte Mas! Reforma Ya!" means "Not one more death! Reform now!" It is the slogan of Border Angels, a nonprofit organization focused on American immigration reform and reducing the number of immigrant deaths in the Tijuana-San Diego area.

A comparison of economic statistics between Mexico and United States is given by [NationMaster](#).

The views expressed herein can in no way be taken to reflect the official opinion of the European Space Agency or the European Union.

More on European Commission space:								
More on ESA:				S-1 website	S-2 website	S-3 website		
More on Copernicus program:				SciHub portal	Cophub portal	Inthub portal	Colhub portal	
More on VisioTerra:				Sentinel Vision Portal	Envisat+ERS portal	Swarm+GOCE portal	CryoSat portal	Proba-V portal