

Yangtze Jialing rivers confluence at Chongqing, China

Sentinel-2 MSI acquired on 09 April 2018 at 03:25:41 UTC
Sentinel-2 MSI acquired on 10 March 2019 at 03:25:49 UTC
Sentinel-2 MSI acquired on 03 June 2019 at 03:25:41 UTC
Sentinel-2 MSI acquired on 12 August 2019 at 03:25:41 UTC

Author(s): Sentinel Vision team, VisioTerra, France - svp@visioterra.fr

Keyword(s): Hydrology, river, water colour, erosion, sediments, alluvium, infrastructure, China.

[3D Layerstack](#)

Fig. 1 - S2 (03.06.2019) - 4,3,2 natural colour - The Jialing River's most notable characteristic was formerly its pellucid green waters.

[2D view](#)

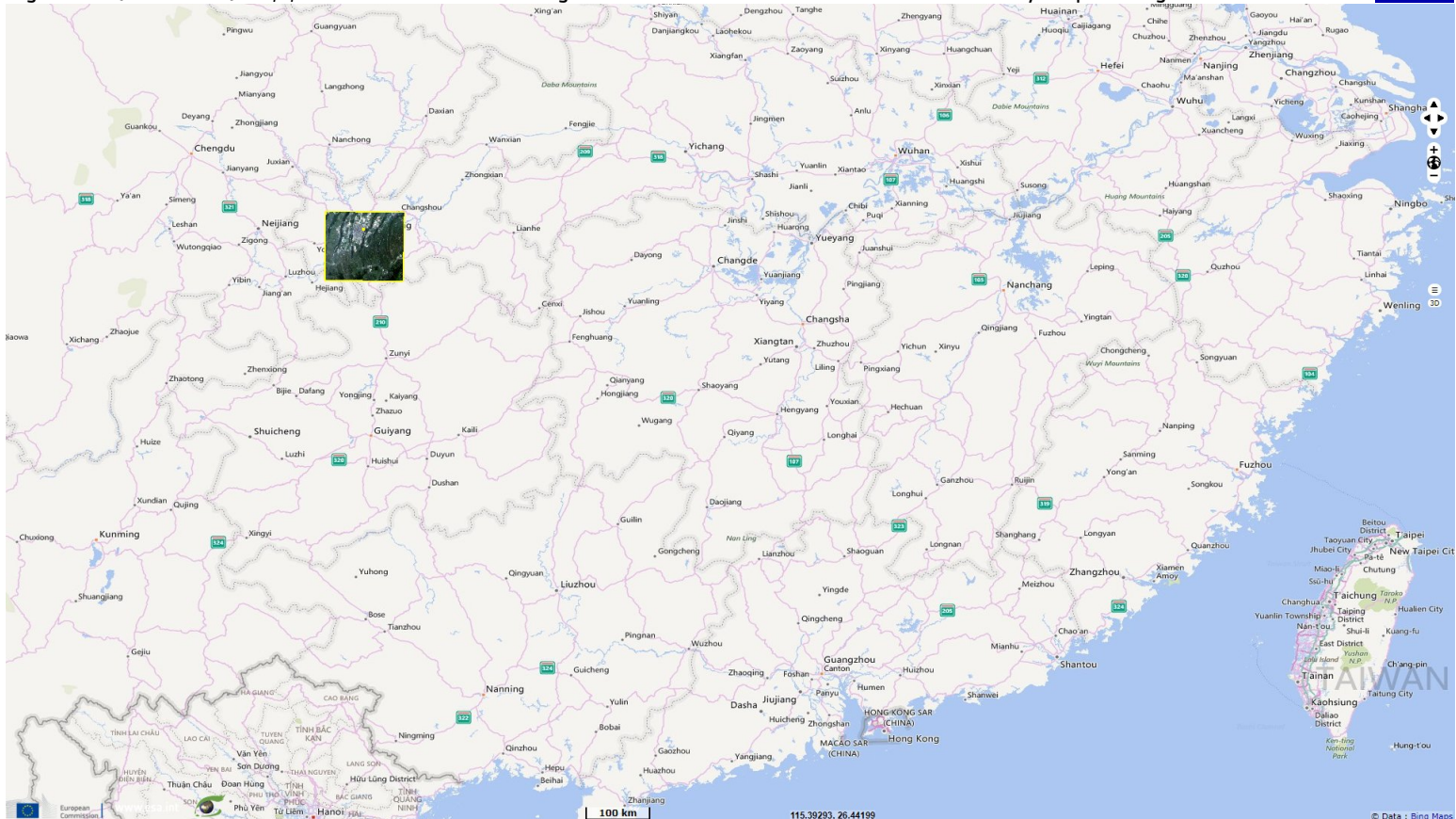


Fig. 2 - S2 (12.08.2019) - 4,3,2 natural colour - From its longest stem, the Jialing River is 1345 km long where it meets the Yangtze.

[3D view](#)



Fig. 3 - S2 (03.06.2019) - 4,3,2 natural colour - Jialing & Yangtze meet in Chongqing, a major Chinese urban area of 18 millions inhabitants. [3D view](#)

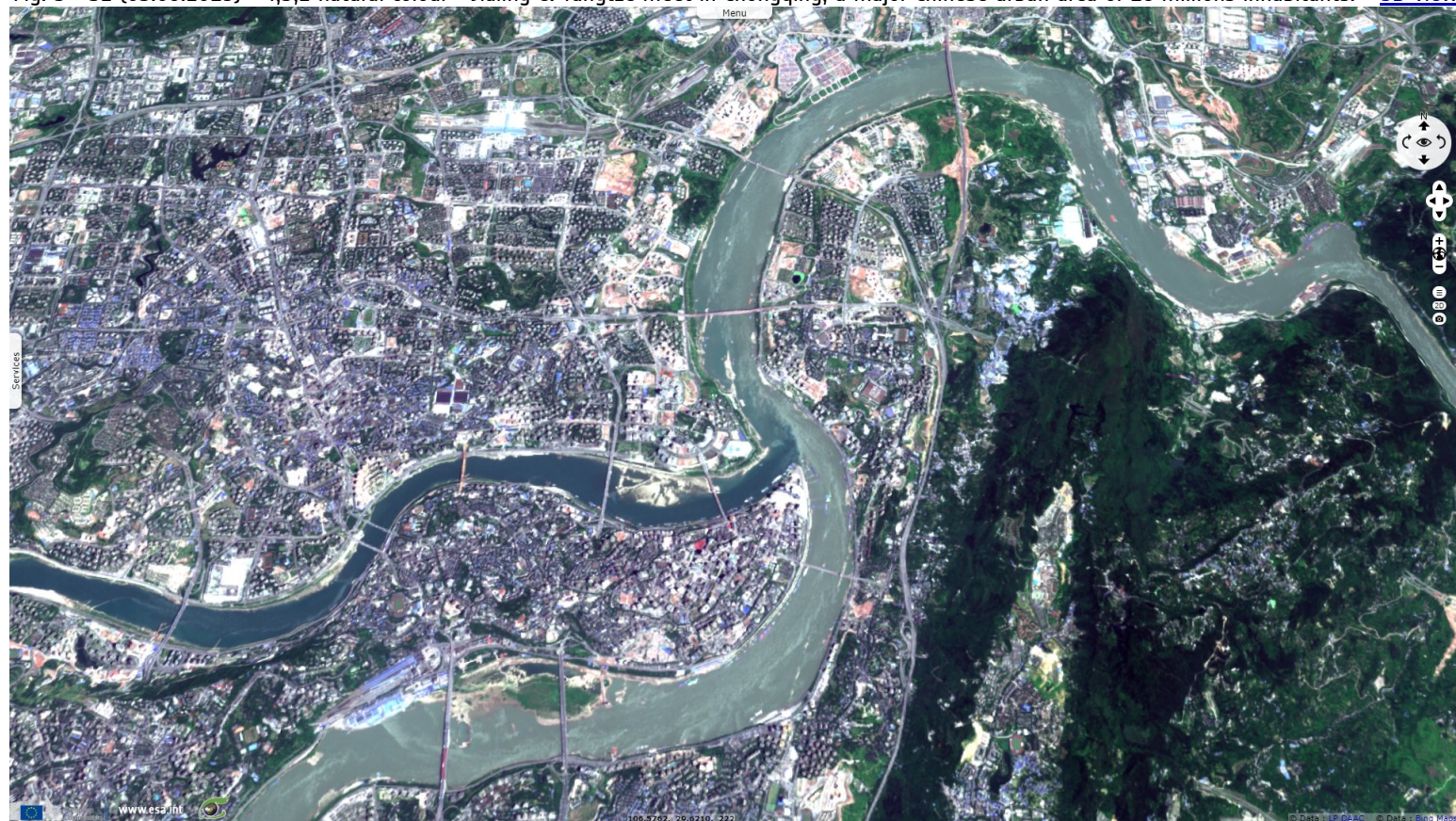














Fig. 4 - S2 (09.04.2018) - The Jialing remains greener than the whiter Yangtze but major modifications along its course changed its colour. [3D view](#)



*The views expressed herein can in no way be taken to reflect the official opinion of the European Space Agency or the European Union.
Contains modified Copernicus Sentinel data 2019, processed by VisioTerra.*

More on European Commission space:						
More on ESA:				S-1 website	S-2 website	S-3 website
More on Copernicus program:				SciHub portal	Cophub portal	Inthub portal
More on VisioTerra:				Sentinel Vision Portal	Envisat+ERS portal	Swarm+GOCE portal
					CryoSat portal	