

Germany about to open Datteln-4 coal power plant

Sentinel-1 CSAR IW acquired on 16 November 2014 at 17:24:19 UTC

Sentinel-2 MSI acquired on 11 September 2015 at 10:40:36 UTC

Sentinel-2 MSI acquired on 07 February 2020 at 10:42:11 UTC

Sentinel-1 CSAR IW acquired on 13 February 2020 at 17:16:35 UTC

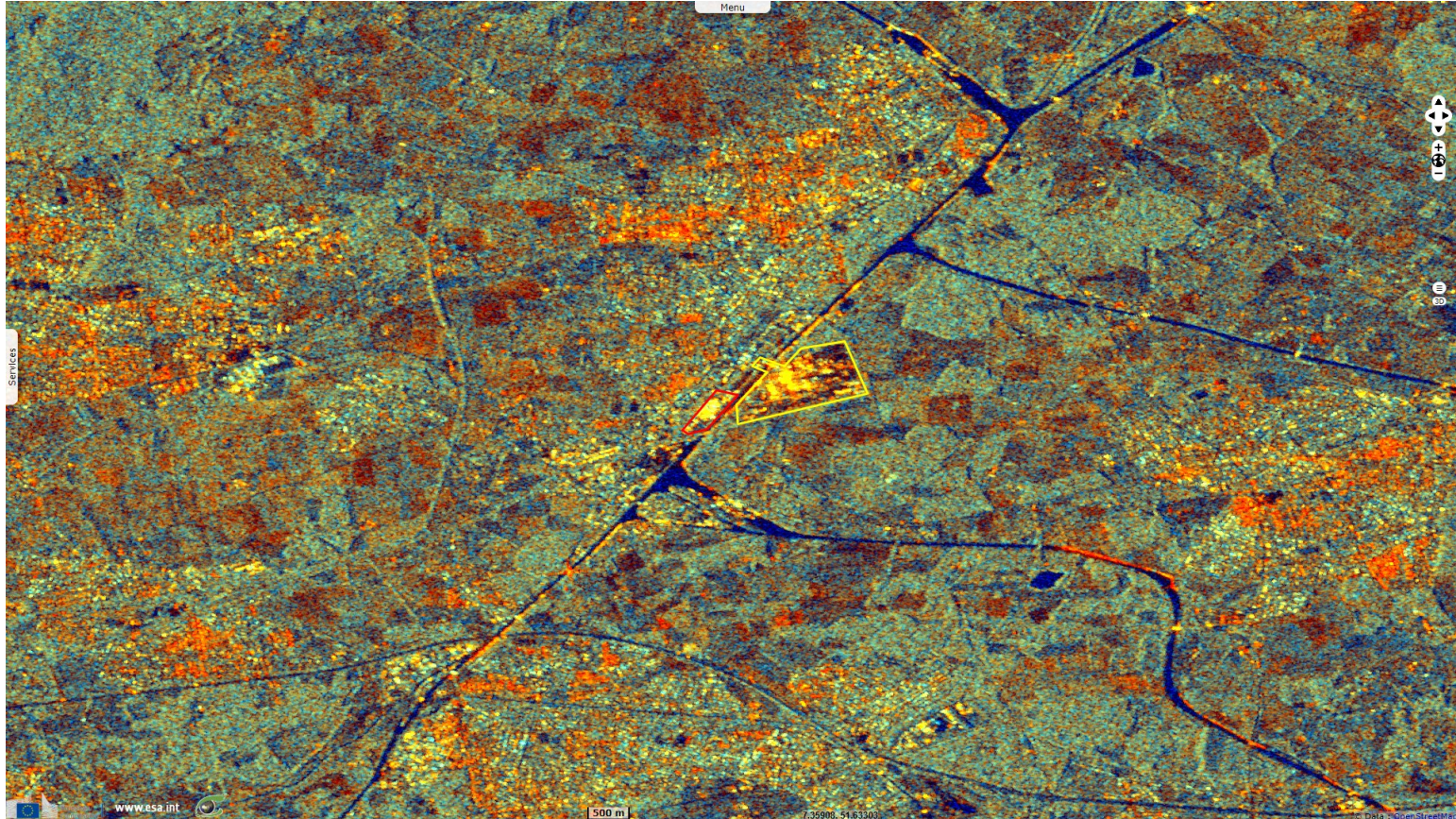
Author(s): Sentinel Vision team, VisioTerra, France - svp@visioterra.fr

Keyword(s): Climate change, global warming, non-renewable energy, infrastructure, Germany



[3D Layerstack](#)

Fig. 1 - S1 (16.11.2014) - vv,vh,ndi(vh,vv) composite - Located on a crossroads of 4 canals, Datteln is the biggest canal junction in the World. [2D view](#)



Lying in the industrial North Rhine-Westphalia, it's also where 3 coal plants Datteln -1, -2 & -3 (100MW to 119MW) opened between 1964 & 1969.

Fig. 2 - S1 (13.02.2020) - vv,vh,ndi(vh,vv) composite - All 3 (red) closed in 2014, replaced by the 1100MW Datteln-4 (yellow), about to open. [2D view](#)

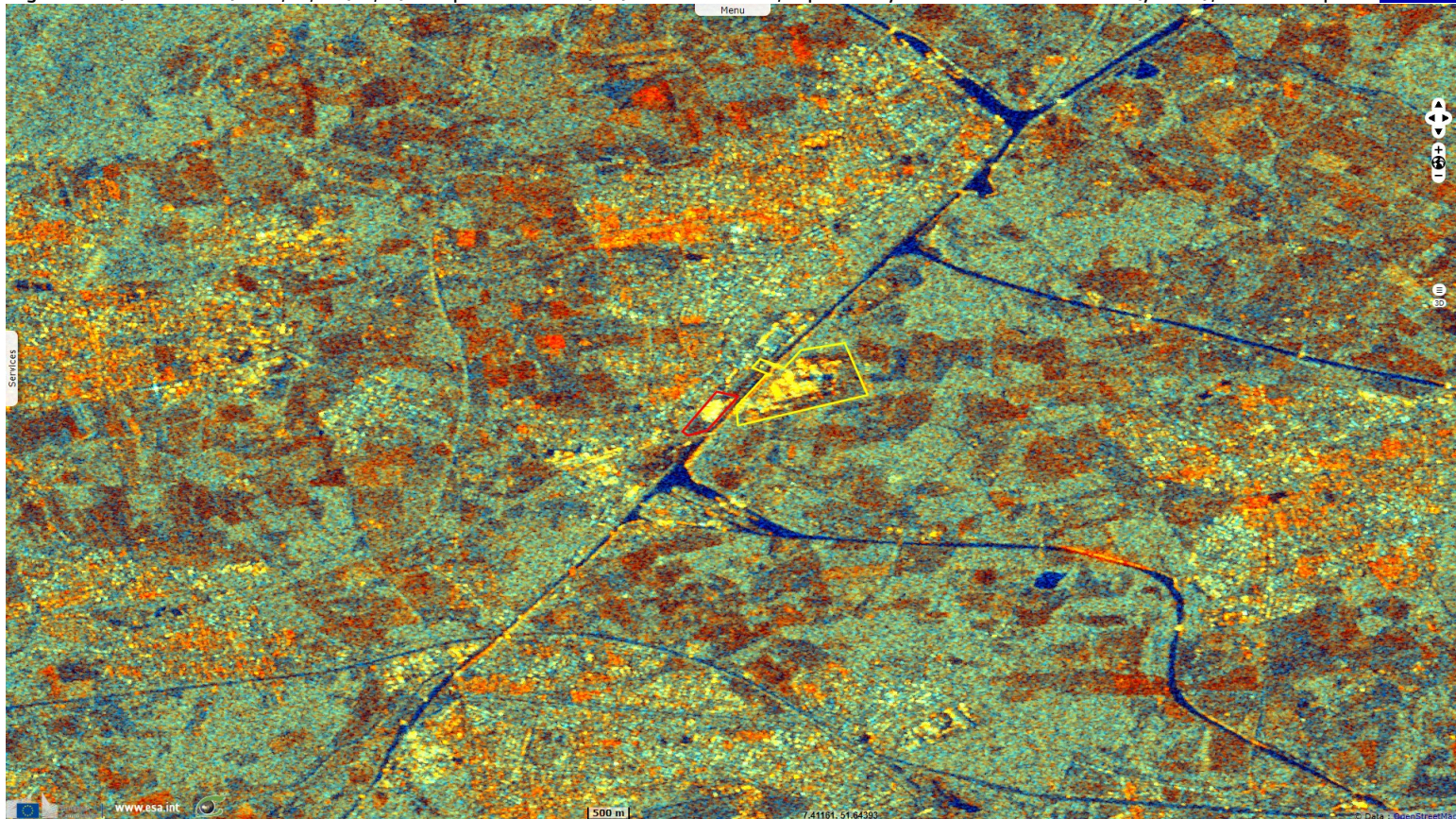


Fig. 3 - S2 (11.09.2015) - 4,3,2 natural colour - As of october 2017, it was the only coal station being built in western Europe.

[2D view](#)



Fig. 4 - S2 (07.02.2015) - 4,3,2 natural colour - It will allow to close several older coal plants; Germany aims to end coal power in 2038.

[2D view](#)



*The views expressed herein can in no way be taken to reflect the official opinion of the European Space Agency or the European Union.
Contains modified Copernicus Sentinel data 2019, processed by VisioTerra.*

More on European Commission space:						
More on ESA:				S-1 website	S-2 website	S-3 website
More on Copernicus program:				SciHub portal	COP Hub portal	In the Hub portal
More on VisioTerra:				Sentinel Vision Portal	Envisat+ERS portal	Swarm+GOCE portal