

# European success story Airbus turns 50

Sentinel-1 CSAR EW acquired on 25 December 2014 from 17:45:54 to 17:46:54 UTC

Sentinel-1 CSAR EW acquired on 06 January 2015 from 17:45:53 to 17:46:53 UTC

Sentinel-1 CSAR EW acquired on 18 January 2015 from 17:45:53 to 17:46:53 UTC

...

Sentinel-2 MSI L2A acquired on 27 March 2019 at 10:50:31 UTC

Author(s): Sentinel Vision team, VisioTerra, France - [svp@visioterra.fr](mailto:svp@visioterra.fr)

Keyword(s): Land, urban, industry, mountain range, France



[2D Layerstack](#)

Fig. 1 - S1 EW (hh+hv: mean 25.12.2014 & 06.01.2015, vv+vh: 18.01.2015) - hh+vv,vh+hv,hh-vv pseudo-quadpol colour composite. [2D view](#) [3D view](#)

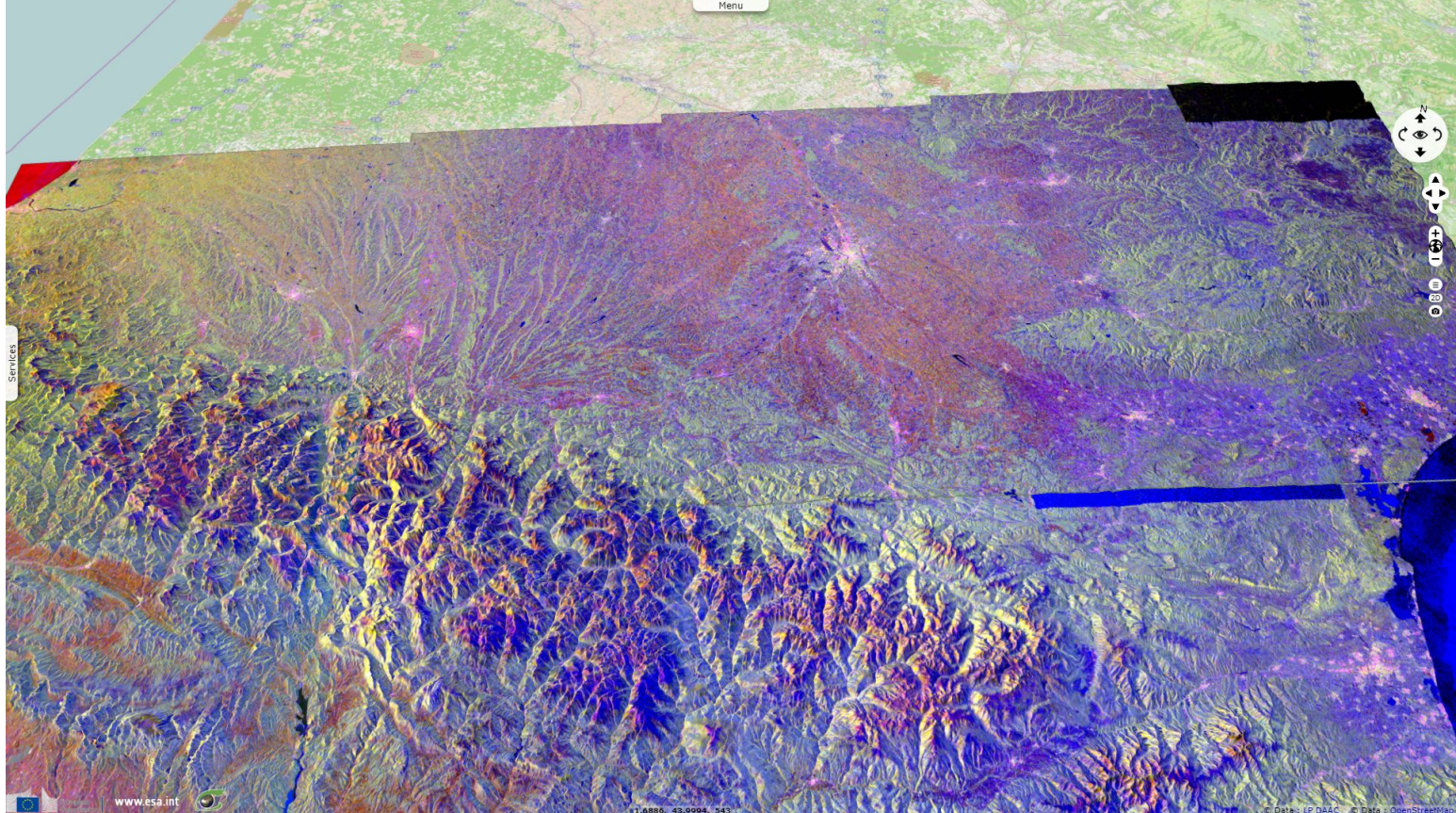


Fig. 2 - S1 IW (mean 01, 13 & 25.05.2017) - vv,vh,vv composite - Toulouse lies north of the Pyrenees between the Atlantic & Mediterranean [3D view](#)

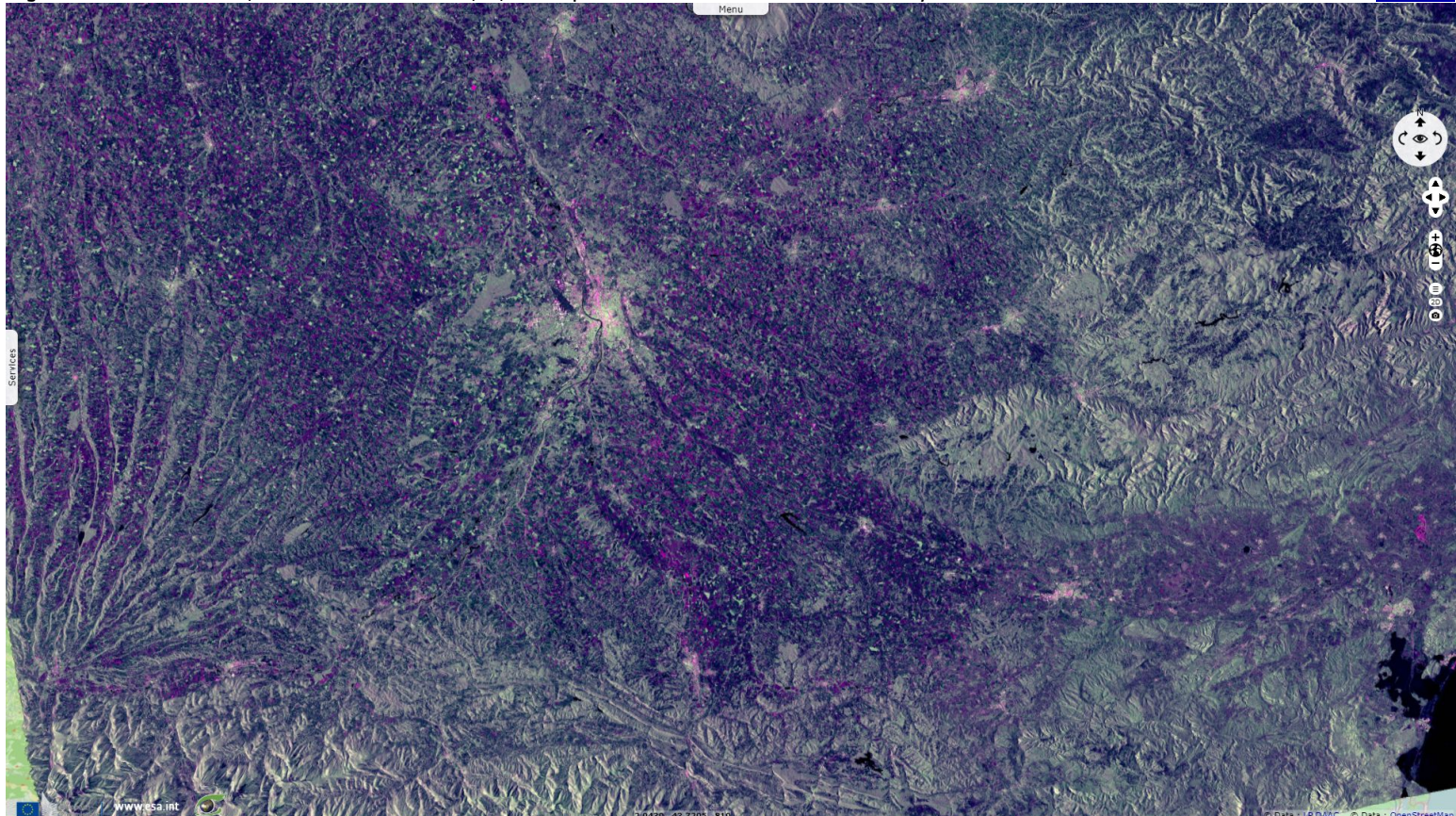


Fig. 3 - S2 L2A (27.03.2019) - 12,11,2 composite - Toulouse is a leading city for French aerospace since CNES & its ecosystem arrived in 1963 [2D view](#)



On 29 May 1969, French transport minister and German economics minister signed an agreement officially launching the Airbus A300, the world's first twin-engine widebody airliner.













Fig. 4 - Airbus head office and first assembly line settled in Blagnac, just next to the "Pink city". [2D view](#)



Fig. 5 - 4,3,2 natural colour - Other assembly lines have since been built in Hamburg, in Seville but also in the USA and in China.



The views expressed herein can in no way be taken to reflect the official opinion of the European Space Agency or the European Union.  
Contains modified Copernicus Sentinel data 2019, processed by VisioTerra.

More on European Commission space:							
More on ESA:				<a href="#">S-1 website</a>	<a href="#">S-2 website</a>	<a href="#">S-3 website</a>	
More on Copernicus program:				<a href="#">SciHub portal</a>	<a href="#">Cophub portal</a>	<a href="#">Inthub portal</a>	<a href="#">Colhub portal</a>
More on VisioTerra:				<a href="#">Sentinel Vision Portal</a>	<a href="#">Envisat+ERS portal</a>	<a href="#">Swarm+GOCE portal</a>	<a href="#">CryoSat portal</a>