

Aerosol plumes colour the Australian sky

Sentinel-5P TROPOMI AER_AI acquired on 12 February 2019 at 04:16:26 UTC

Sentinel-3 OLCI FR acquired on 12 February 2019 from 22:52:27 to 22:55:27 & from 23:31:59 to 23:34:59 UTC

Sentinel-5P TROPOMI AER_AI acquired on 13 February 2019 from 03:56:26 to 04:01:26 UTC

Sentinel-5P TROPOMI AER_AI acquired on 14 February 2019 from 03:36:26 to 03:41:26 UTC

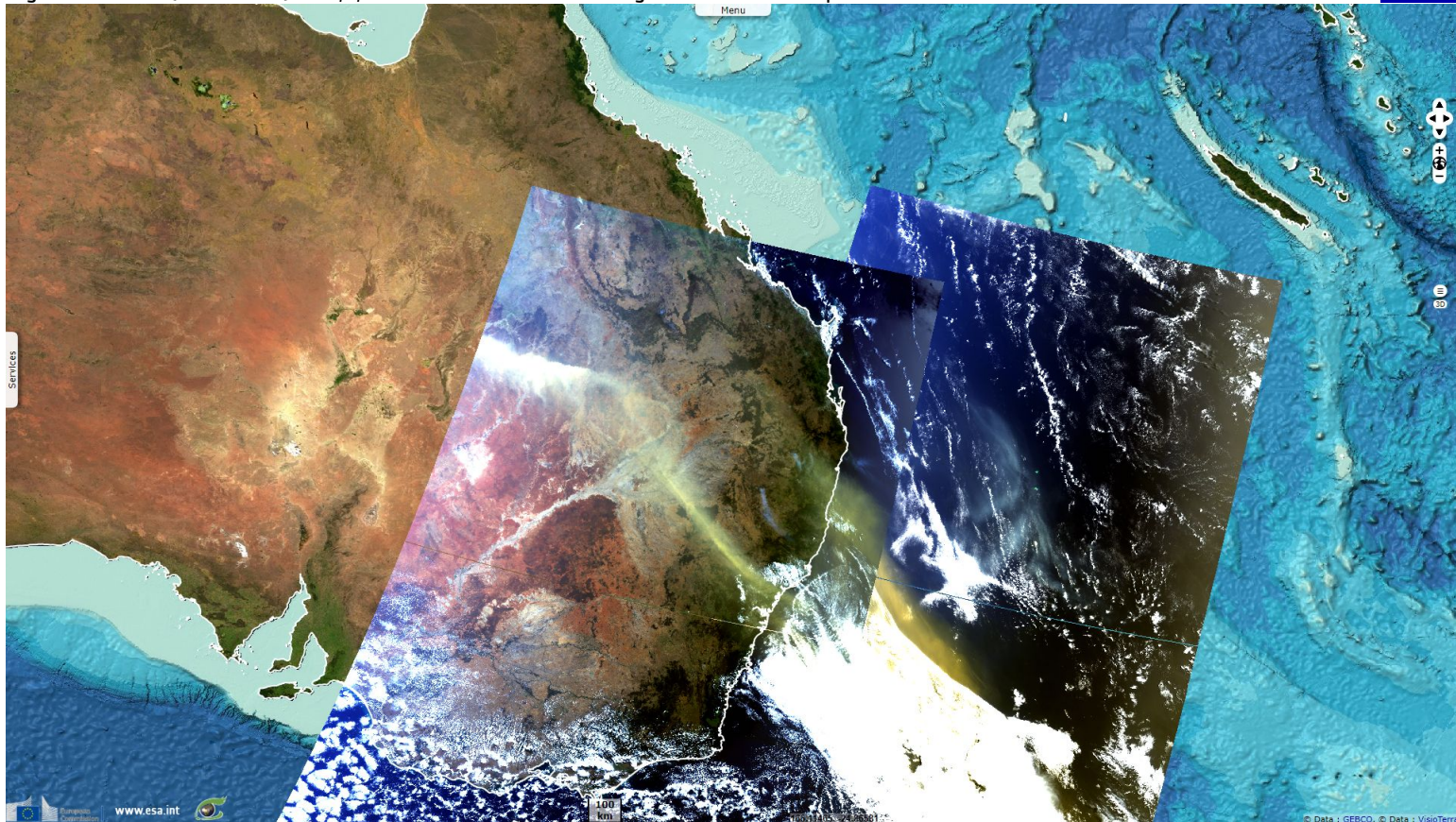
Author(s): Sentinel Vision team, VisioTerra, France - svp@visioterra.fr

Keyword(s): Atmosphere, wind, aerosol, plume, dust, smoke, draught, heatwave, Australia

[2D Layerstack](#)

Fig. 1 - S3 OLCI (12.02.2019) - 10,6,3 natural colour - Several large dust and smoke plume over Australia.

[2D view](#)



The lasting heatwave and draught in Australia this summer reduced moisture and soil cohesion, easing the creation of large plumes.

Fig. 2 - S5P TROPOMI (13.02.2019) - Aerosol Index from 380 & 340 nm - S5P acquired these aerosol plumes 4 hours later.

[2D animation](#) [2D view](#)

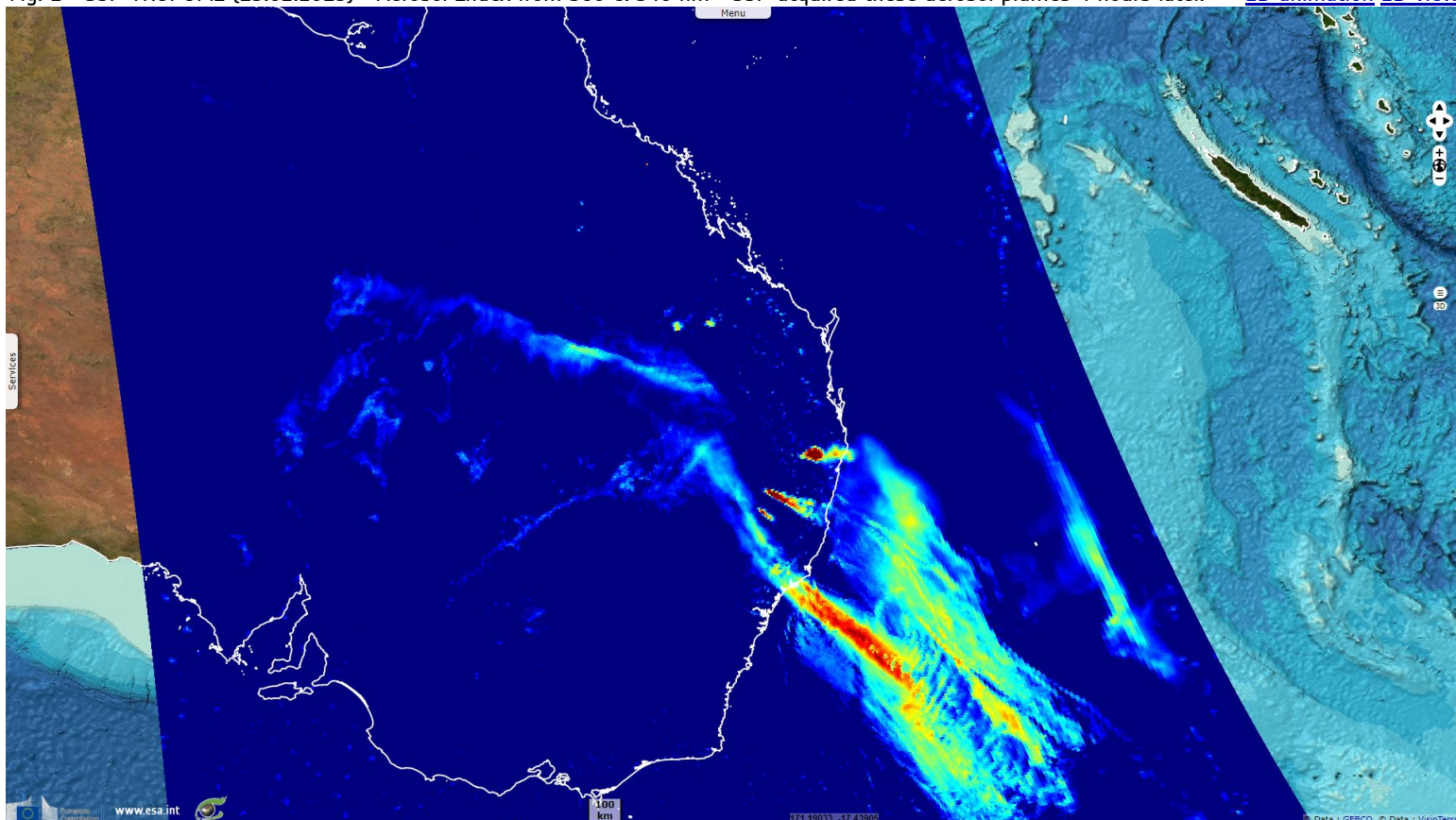


Fig. 3 - 12.02.2019 - Aerosol Index from 388 & 354 nm - The other aerosol band shows slight differences with the previous. [2D animation](#) [2D view](#)

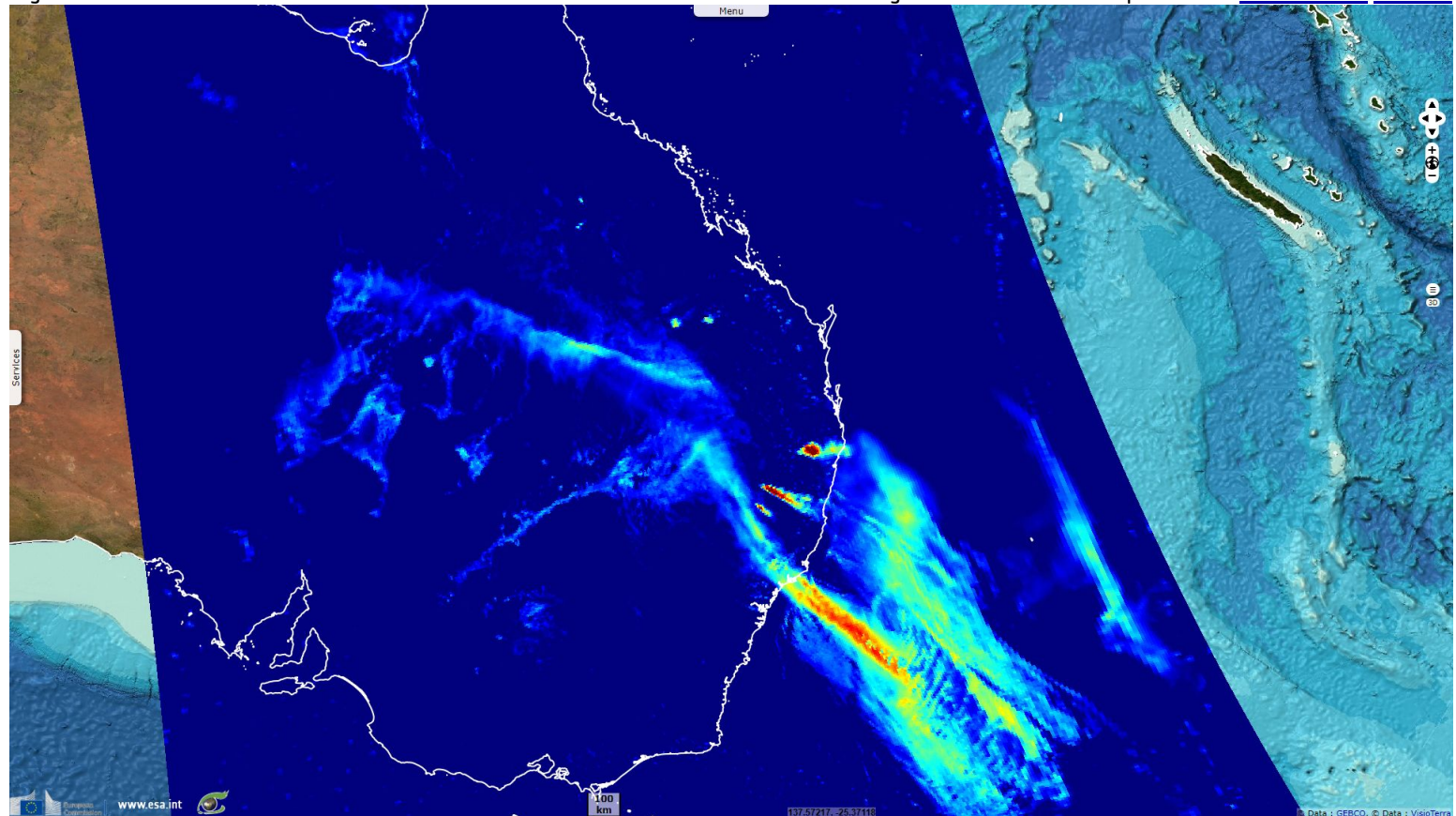
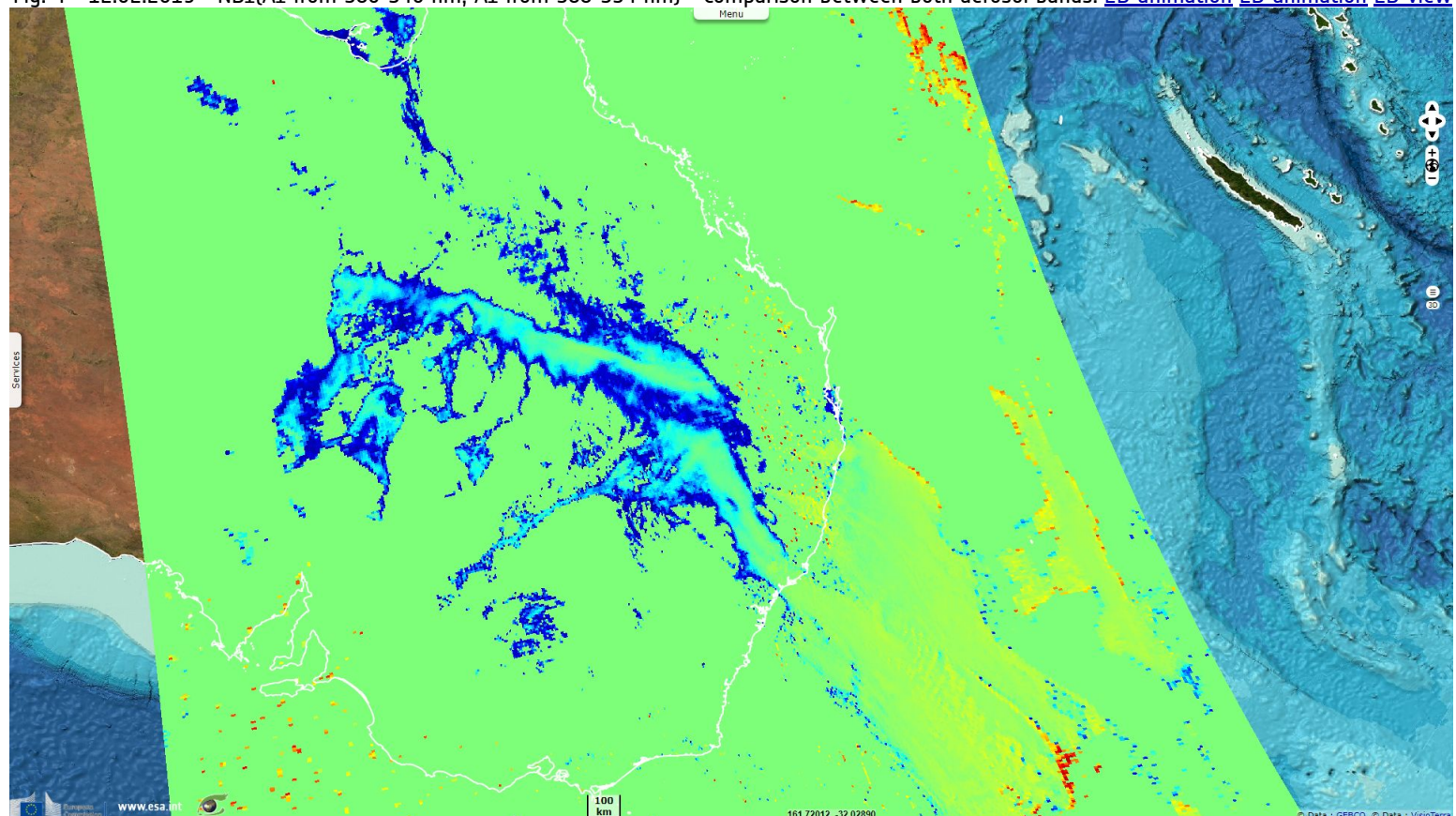


Fig. 4 - 12.02.2019 - NDI(AI from 380-340 nm, AI from 388-354 nm) - Comparison between both aerosol bands. [2D animation](#) [2D animation](#) [2D view](#)



*The views expressed herein can in no way be taken to reflect the official opinion of the European Space Agency or the European Union.
Contains modified Copernicus Sentinel data 2019, processed by VisioTerra.*

| | | | | | | |
|------------------------------------|--|--|--|--|------------------------------------|-----------------------------------|
| More on European Commission space: | | | | | | |
| More on ESA: | | | | S-1 website | S-2 website | S-3 website |
| More on Copernicus program: | | | | SciHub portal | Cophub portal | Inthub portal |
| More on VisioTerra: | | | | Sentinel Vision Portal | Envisat+ERS portal | Swarm+GOCE portal |
| | | | | | CryoSat portal | |