

# Monthly evolution and changing colours of the Yukon delta, Alaska, USA

Sentinel-1 CSAR IW acquired on 07 November 2022 from 17:18:40 to 17:19:05 UTC

Sentinel-2 MSI acquired on 13 November 2022 at 22:28:01 UTC

...

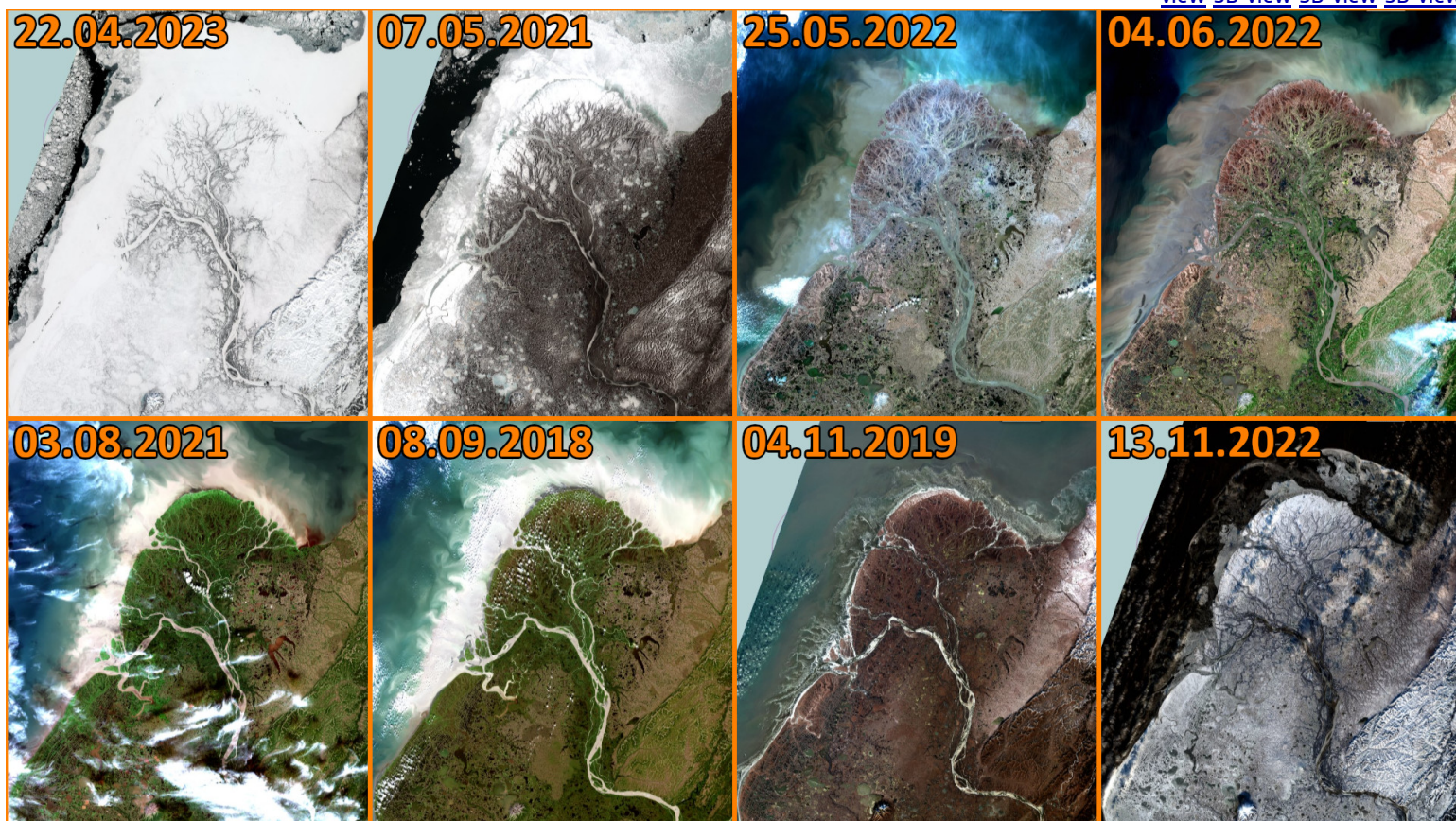
Sentinel-2 MSI acquired on 22 April 2023 at 22:25:31 UTC

Sentinel-1 CSAR IW acquired on 27 September 2023 from 17:18:46 to 17:19:11 UTC

Author(s): Sentinel Vision team, VisioTerra, France - [svp@visioterra.fr](mailto:svp@visioterra.fr)

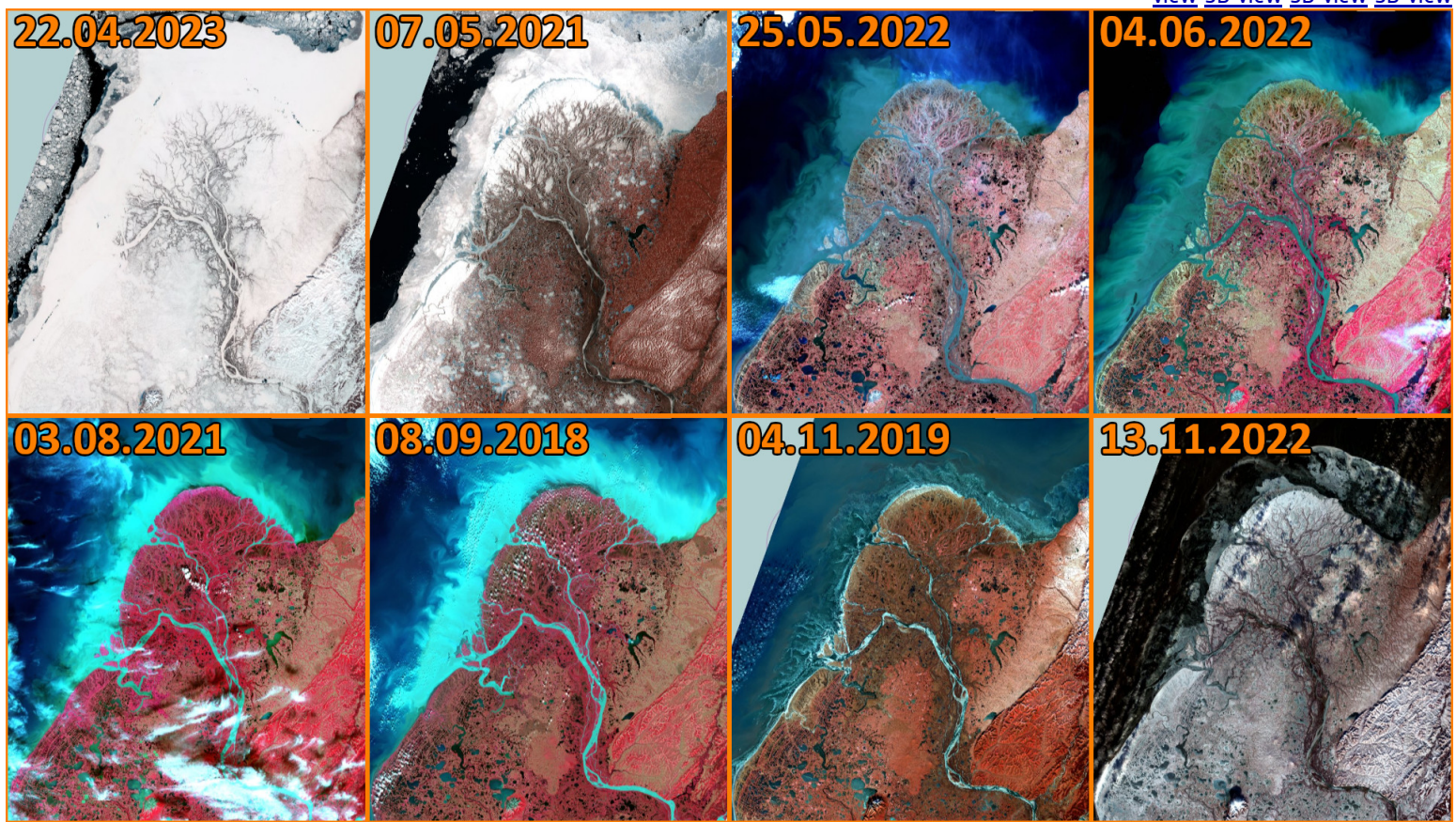
Keyword(s): Coastal, river, hydrology, wetland, protected area, biodiversity, water colour, sediments, alluvium, polar, cryosphere, snow, ice, Alaska, USA, United States

Fig. 1 - S2 (22.04.2023; 07.05.2021; 25.05.2022; 04.06.2022; 03.08.2021; 08.09.2018; 04.11.2019; 13.11.2022) [3D view](#) [3D view](#) [3D view](#) [3D view](#) [3D view](#) [3D view](#) [3D view](#) [3D view](#) [3D view](#)



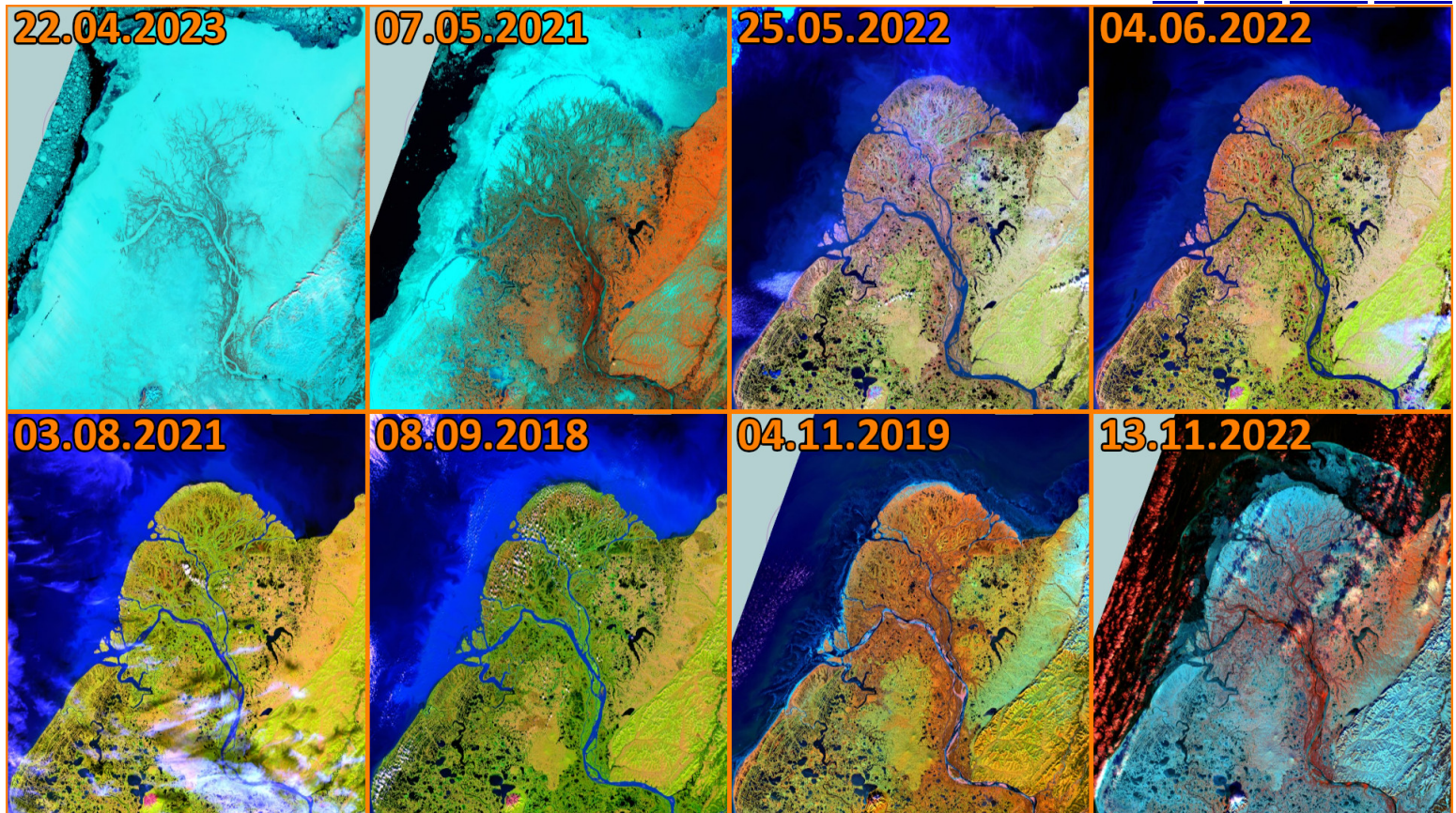
The Yukon Delta is a river delta located where the Yukon river empties into the Bering Sea on the west coast of the U.S. state of Alaska.

Fig. 2 - S2 (22.04.2023; 07.05.2021; 25.05.2022; 04.06.2022; 03.08.2021; 08.09.2018; 04.11.2019; 13.11.2022) [3D view](#) [3D view](#) [3D view](#) [3D view](#) [3D view](#)

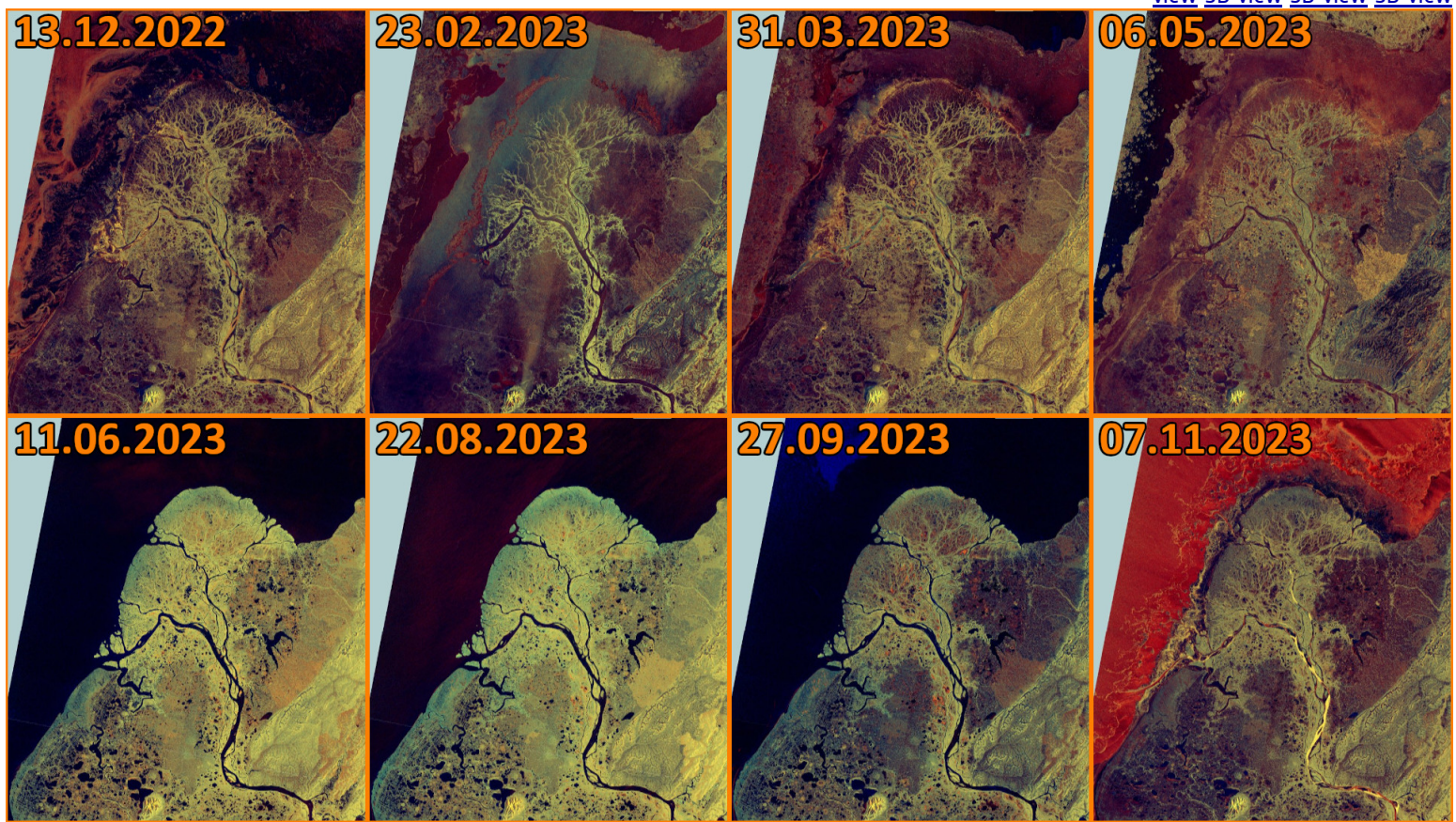


The grouped Yukon-Kuskokwim Delta is one of the largest deltas in the world at approximately 129,500 km<sup>2</sup>. Only the Yukon delta is shown here.

Fig. 3 - S2 (22.04.2023; 07.05.2021; 25.05.2022; 04.06.2022; 03.08.2021; 08.09.2018; 04.11.2019; 13.11.2022) [3D view](#) [3D view](#) [3D view](#) [3D view](#) [3D view](#)



This grouped delta is larger than the Mississippi River Delta, it is comparable in size to the entire U.S. state of Louisiana. The Yukon river itself is 3185 km long.



The delta, which consists mainly of tundra, is protected as part of the Yukon Delta National Wildlife Refuge. This wetland landscape is covered in snow for half the year.

*The views expressed herein can in no way be taken to reflect the official opinion of the European Space Agency or the European Union. Contains modified Copernicus Sentinel data 2023, processed by VisioTerra.*

More on European Commission space:						
More on ESA:				<a href="#">S-1 website</a>	<a href="#">S-2 website</a>	<a href="#">S-3 website</a>
More on Copernicus program:				<a href="#">SciHub portal</a>	<a href="#">CopHub portal</a>	<a href="#">Inthub portal</a> <a href="#">Colhub portal</a>
More on VisioTerra:				<a href="#">Sentinel Vision Portal</a>	<a href="#">Envisat+ERS portal</a>	<a href="#">Swarm+GOCE portal</a> <a href="#">CryoSat portal</a>