

# Santorini

Sentinel-1 CSAR IW acquired on **11 February 2017** at 16:13:44 UTC  
Sentinel-2 MSI acquired on **05 October 2017** at 09:00:09 UTC

Author(s): Sentinel Vision team, VisioTerra, France - [svp@visioterra.fr](mailto:svp@visioterra.fr)

Keyword(s): Geohazard, natural disaster, geology, volcano, Greece, Mediterranean Sea



[2D Layerstack](#)

Fig. 1 - S1 (11.02.2017) - vv,vh,ndi(vh,vv) colour composite - Thera & Therasia are the main remnants of the flooded Santorini caldera. [2D view](#)

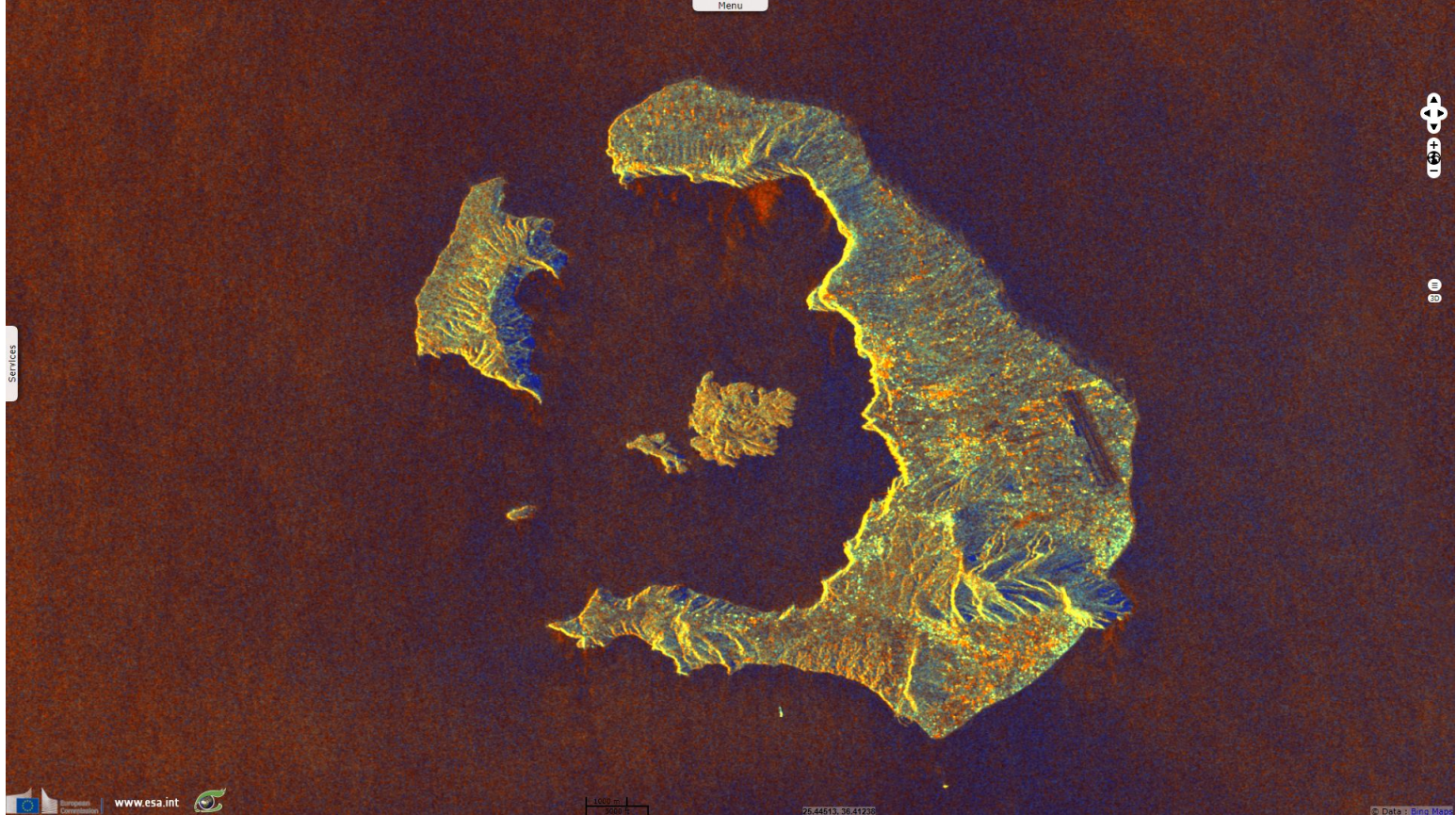


Fig. 2 - S2 (05.10.2017) - 11,8,2 colour composite - Santorini's eruption 3600 years ago likely took a part in the fall of the Minoan civilization. [2D view](#)



Fig. 3 - S2 - 12,11,4 colour composite - The cataclysmic eruption & collapse may be the source of the Atlantis myth.

[2D view](#)



Fig. 4 - S2 - 4,3,2 natural colour - At the centre of the caldera, Nea Kameni was formed by successive lava flows that happened afterwards.

[2D view](#)



*The views expressed herein can in no way be taken to reflect the official opinion of the European Space Agency or the European Union.*

More on European Commission space:								
More on ESA:				<a href="#">S-1 website</a>	<a href="#">S-2 website</a>	<a href="#">S-3 website</a>		
More on Copernicus program:				<a href="#">SciHub portal</a>	<a href="#">CopHub portal</a>	<a href="#">Inthub portal</a>	<a href="#">Colhub portal</a>	
More on VisioTerra:				<a href="#">Sentinel Vision Portal</a>	<a href="#">Envisat+ERS portal</a>	<a href="#">Swarm+GOCE portal</a>	<a href="#">CryoSat portal</a>	<a href="#">Proba-V portal</a>