

Brent Delta decommissioning

Sentinel-2 MSI acquired on **25 January 2017** at 11:23:31 UTC

Sentinel-2 MSI acquired on **18 April 2017** at 11:33:21 UTC

...

Sentinel-2 MSI acquired on **05 May 2017** at 11:21:21 UTC

Sentinel-2 MSI acquired on **04 June 2017** at 11:21:21 UTC

Author(s): Sentinel Vision team, VisioTerra, France - svp@visioterra.fr

Keyword(s): ocean monitoring, urban, oil rig, platform, spill, torching, Scotland, England, United Kingdom, Norway, North Sea



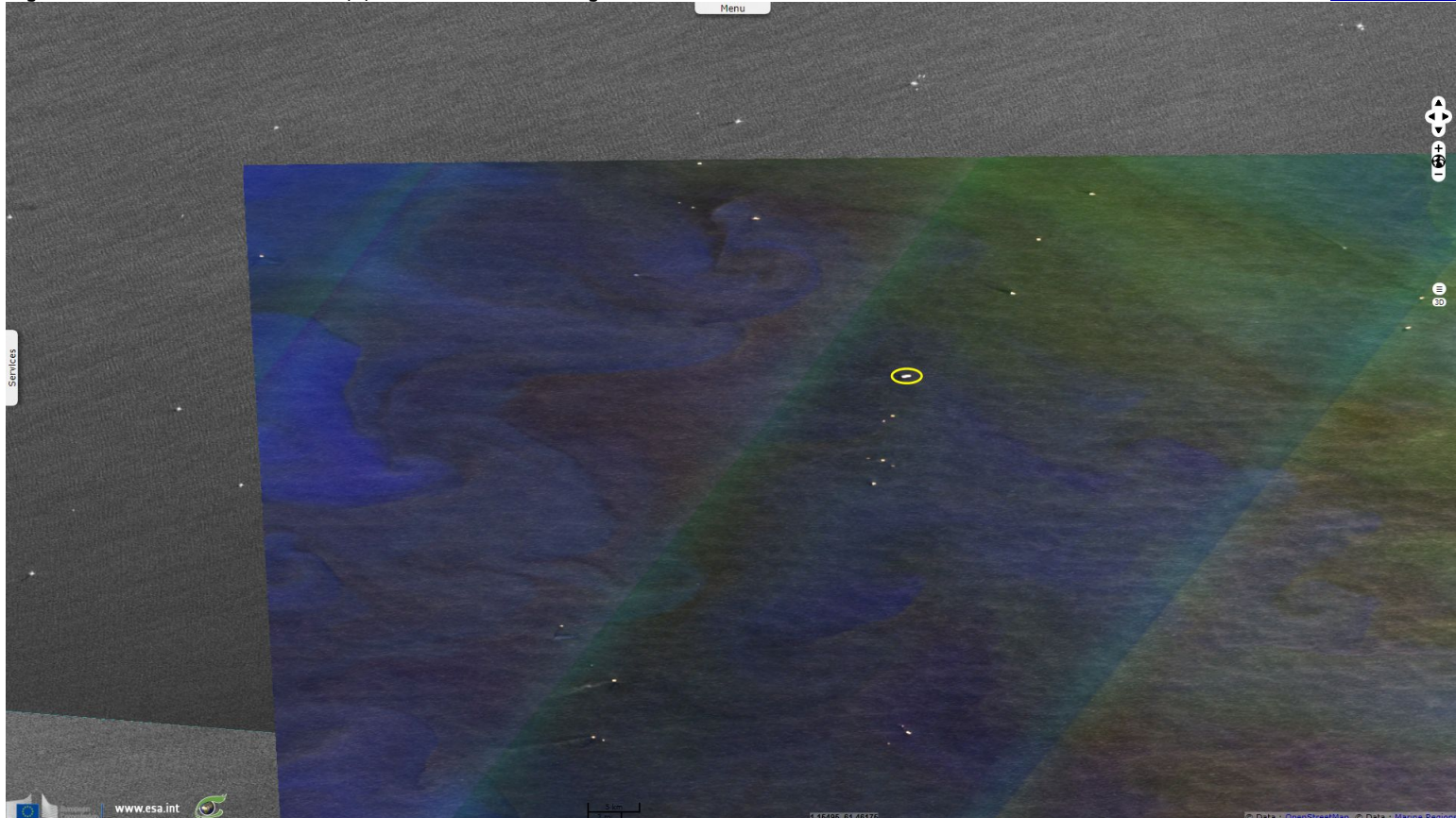
[2D Layerstack](#)

Fig. 1 - Sentinel-1 (22.04.2017 & 01.05.2017) - vv polarization - Shortest path between Brent offshore oilfield & Seaton port near Hartlepool. [2D view](#)



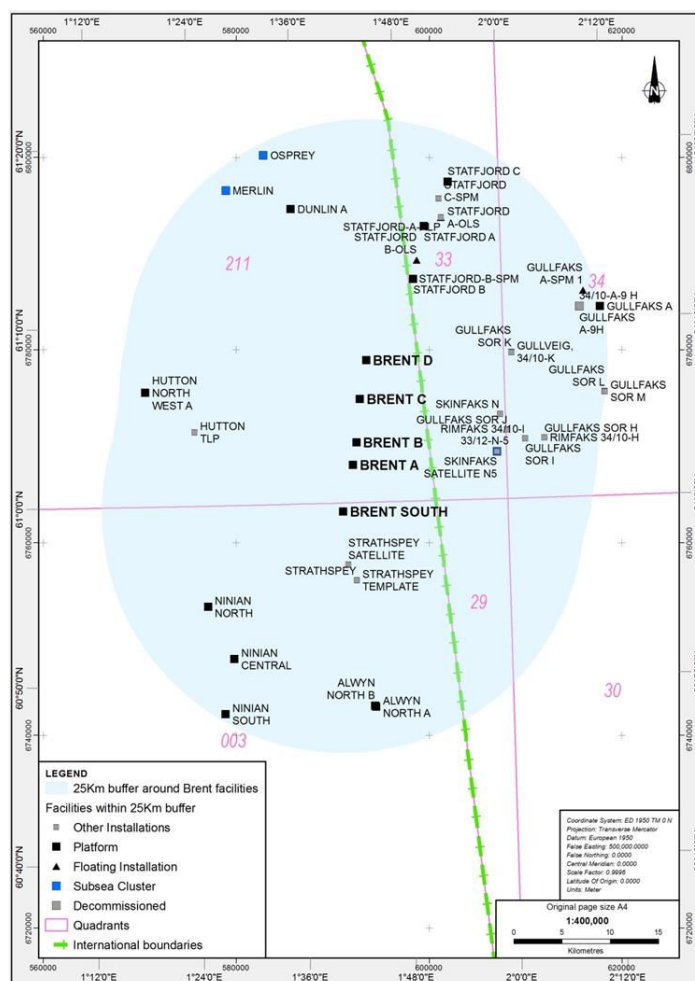
Fig. 2 - Sentinel-2 (28.04.2017) - 4,3,2 natural colour - Oil rigs in the North Sea.

[2D animation](#)



By zooming in, oil spills and torching can be seen coming from several of these platforms.

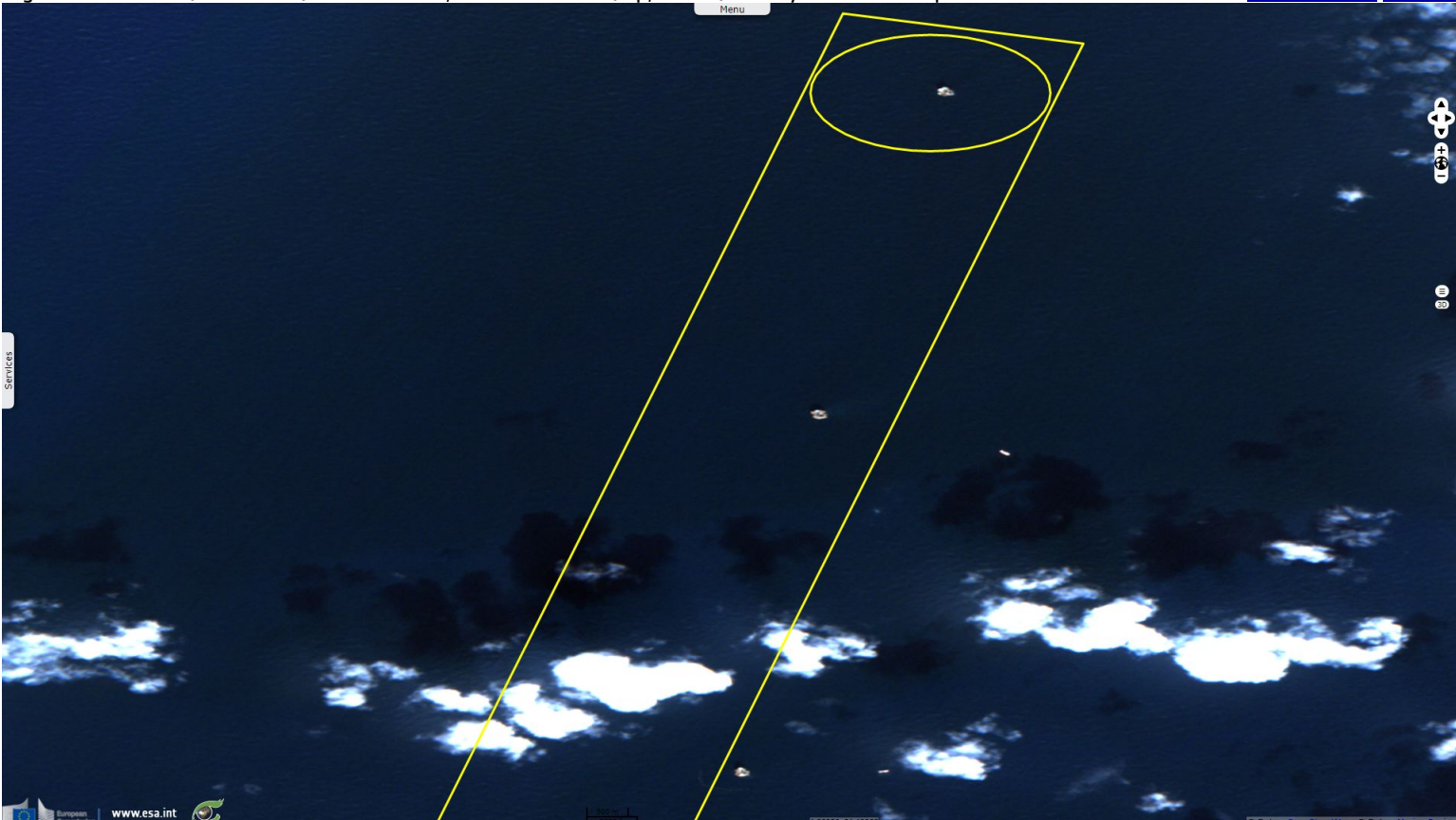
According to [Shell](#) regarding the Brent oil field located offshore in North Sea: "After 40 years of operations, almost all the economically recoverable reserves of oil and gas have been produced, and in line with UK legislation, the Brent Field will now be decommissioned. The decision to decommission Brent is a natural step in the life cycle of the field."



Facilities located around the Brent field - source: [UK government](#)

Fig. 3 - Sentinel-2 (18.04.2017) - Brent Bravo, Charlie & Delta (top, circled) 10 days before the operations.

[2D animation](#) [2D view](#)





Brent Delta in operation - source: Alamy Stock Photo for [The Guardian](#)

48 wells, of which 40 development wells were drilled from Delta over the period 1977 to 2007 according to the [official decommissioning report](#)

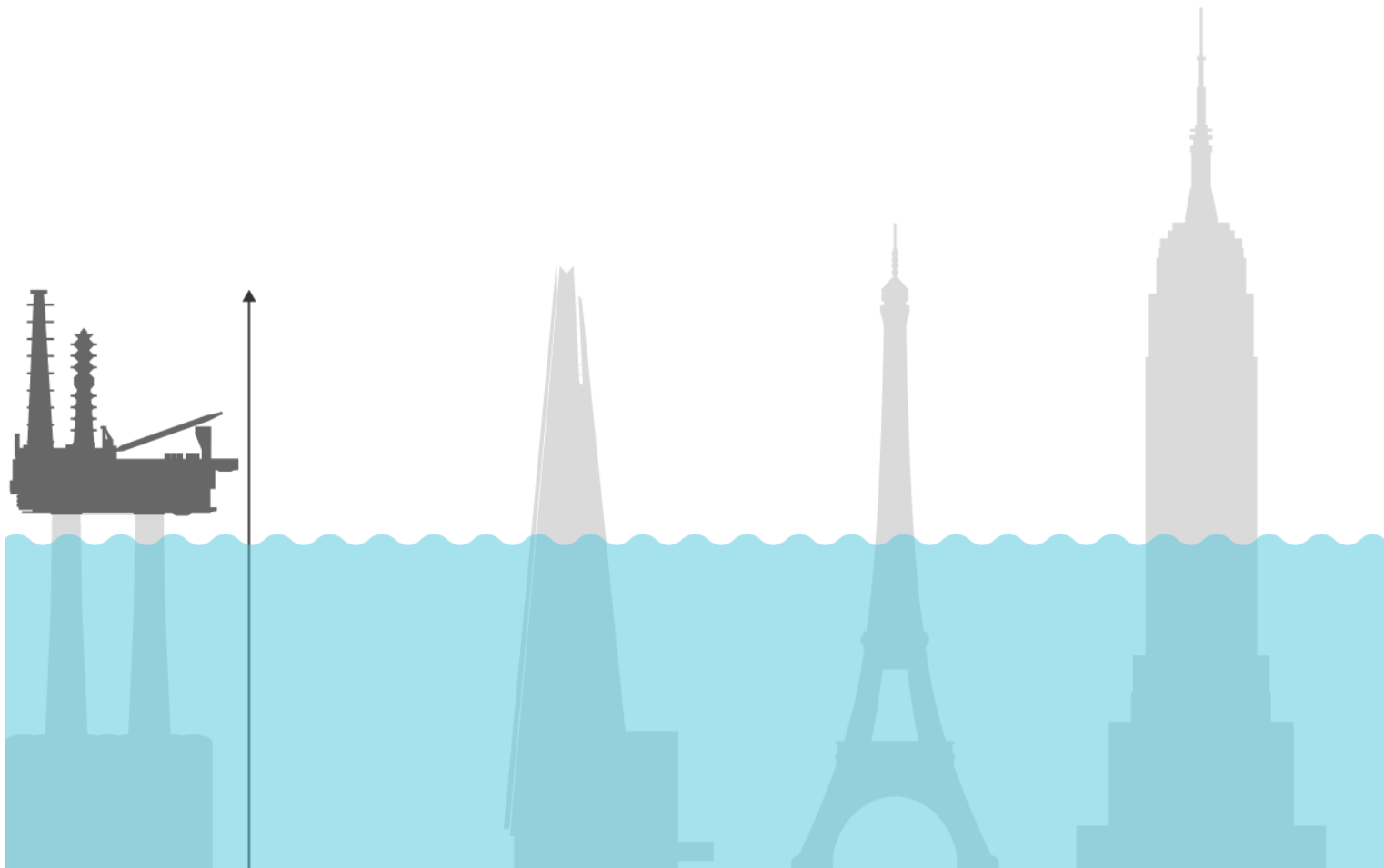
Fig. 4 - Sentinel-2 (28.04.2017) - Pioneering Spirit vessel shown while it was removing and loading Brent Delta's topsides.

[2D view](#)



Shell described the decommissioning as the succession for the following steps:

- plugging and making safe the 154 wells across the Brent Field;
- removing to shore, and recycling the platform's topsides;
- recovering oil and gas debris from the seabed across the Brent Field;
- removing the oil –known as 'attic oil' – trapped at the top of some of the subsea storage cells;



Scale of Brent Delta (299m) compared to the Shard (310m), Eiffel Tower (324m) & Empire State Building (443m) - source: [The Guardian](https://www.theguardian.com)

Fig. 5 - Sentinel-2 (04.06.2017) - 4,3,2 - Only 3 legs remain over the sea after Brent Delta decommissioning.

[2D view](#)

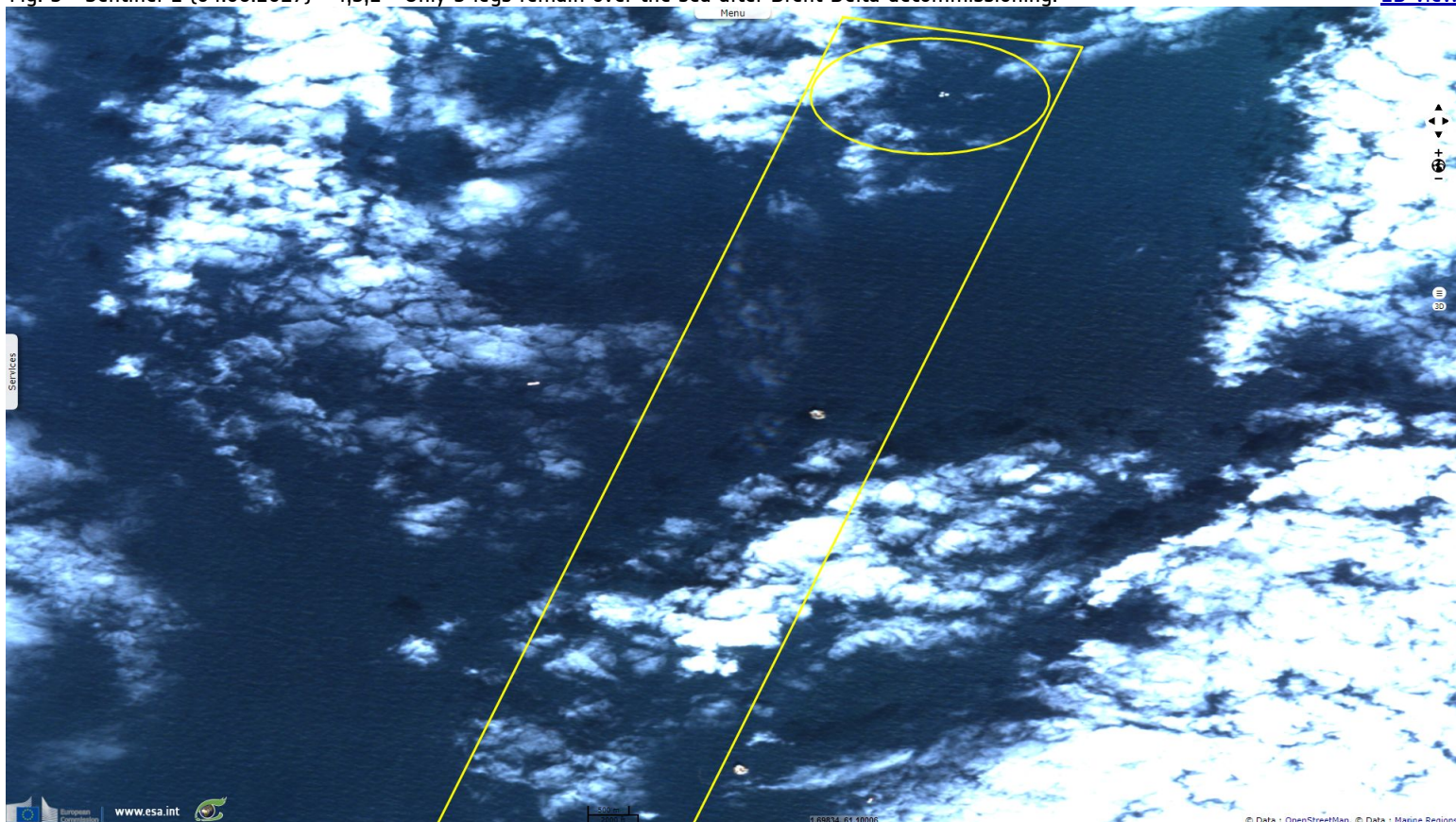


Fig. 6 - Sentinel-1 (22.04.2017) - Brent Bravo, Charlie & Delta (top, circled) 6 days before the operations.

[2D animation](#) [2D view](#)

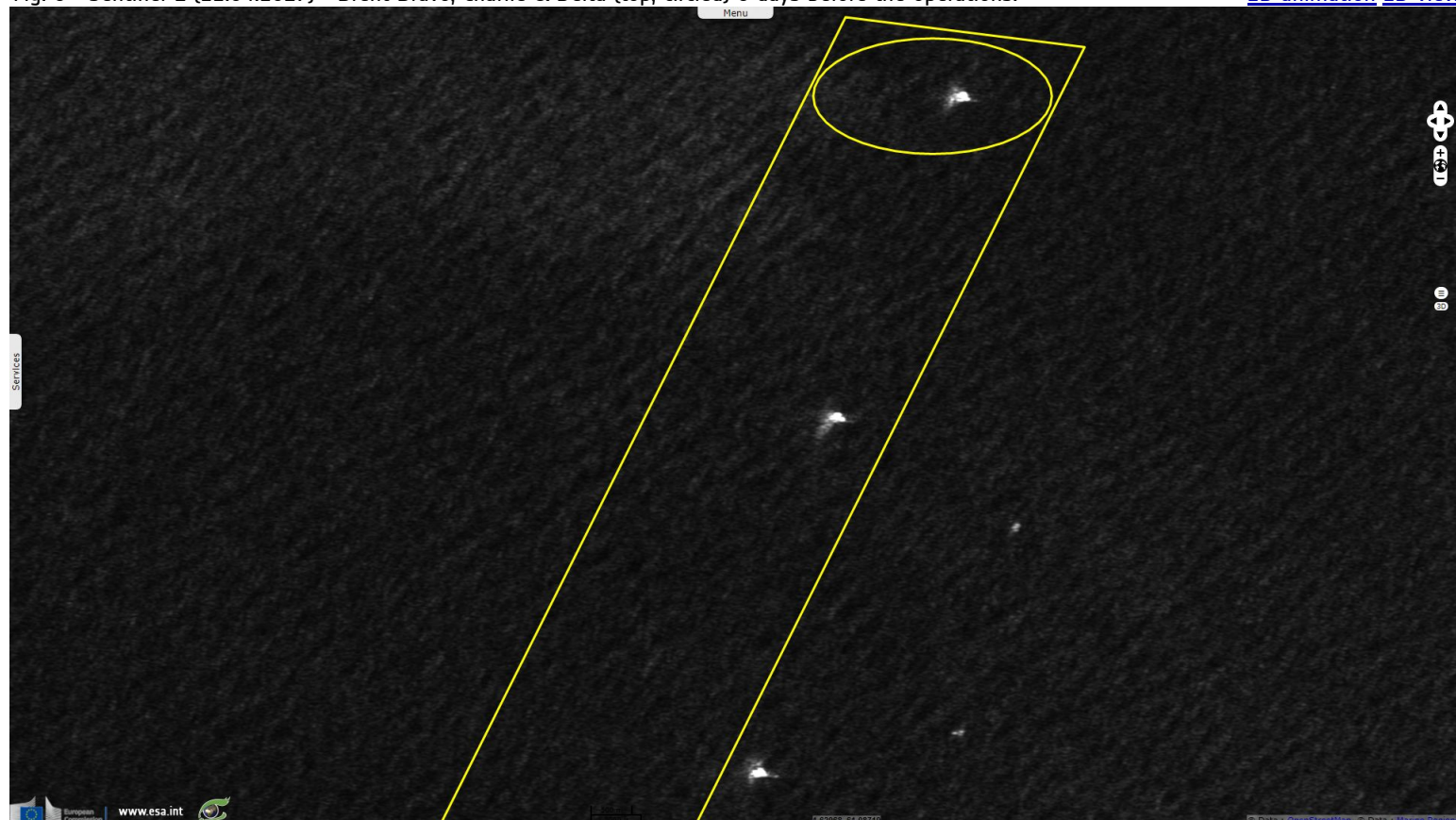
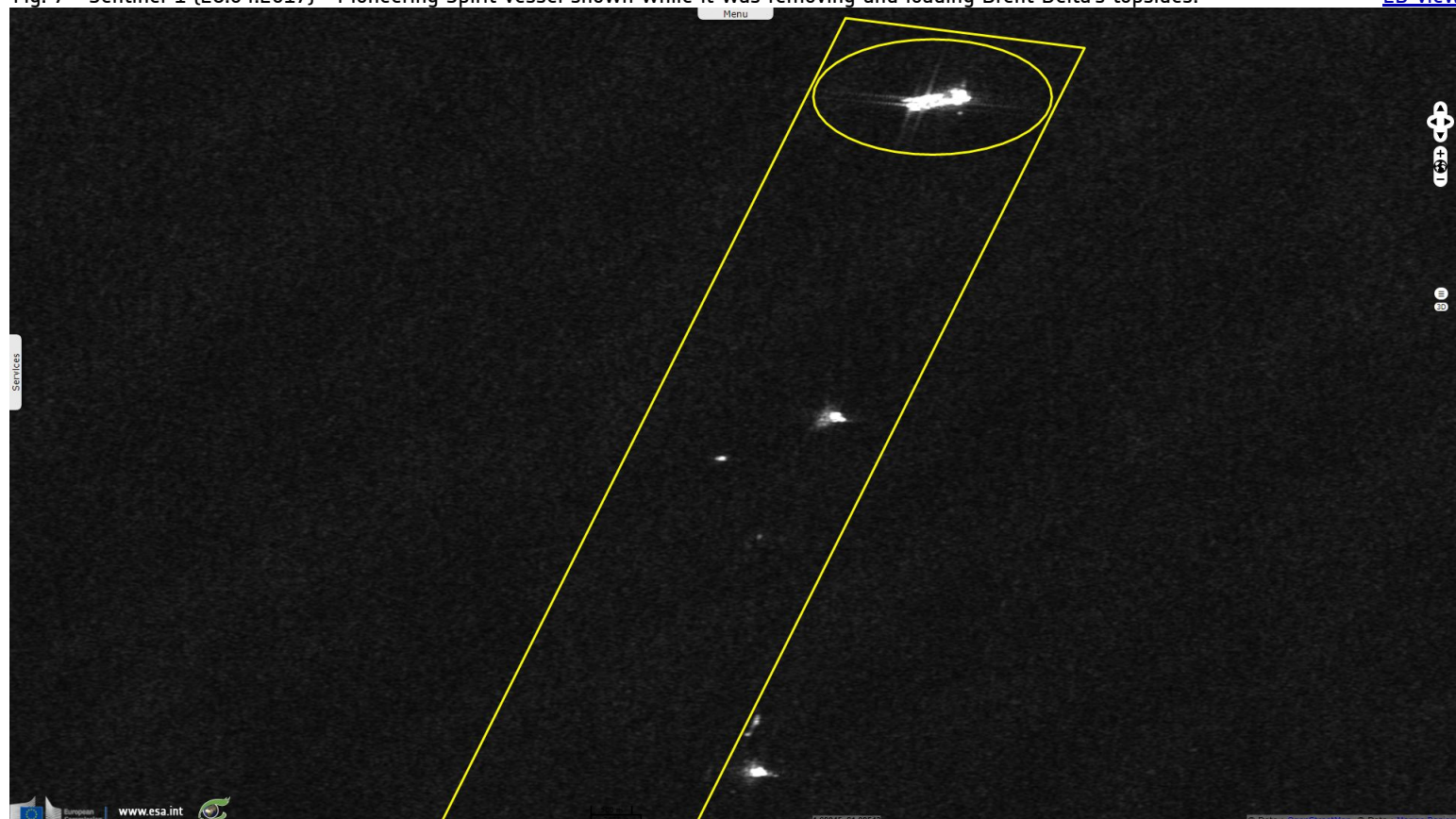


Fig. 7 - Sentinel-1 (28.04.2017) - Pioneering Spirit vessel shown while it was removing and loading Brent Delta's topsides.

[2D view](#)



[offshoreenergytoday](#) described the operation: "*Allseas-owned dynamically positioned single-lift installation/decommissioning and pipelay vessel Pioneering Spirit has removed Shell's 24,000 t Brent Delta platform topsides from the UK North Sea setting what the company claimed was the world record in lifting.*"



Pioneering Spirit, shown as it transports Brent Delta platform

Fig. 8 - Sentinel-1 (04.05.2017) - Little remains visible of what was a 300m high structure from seabed to top.

[2D view](#)

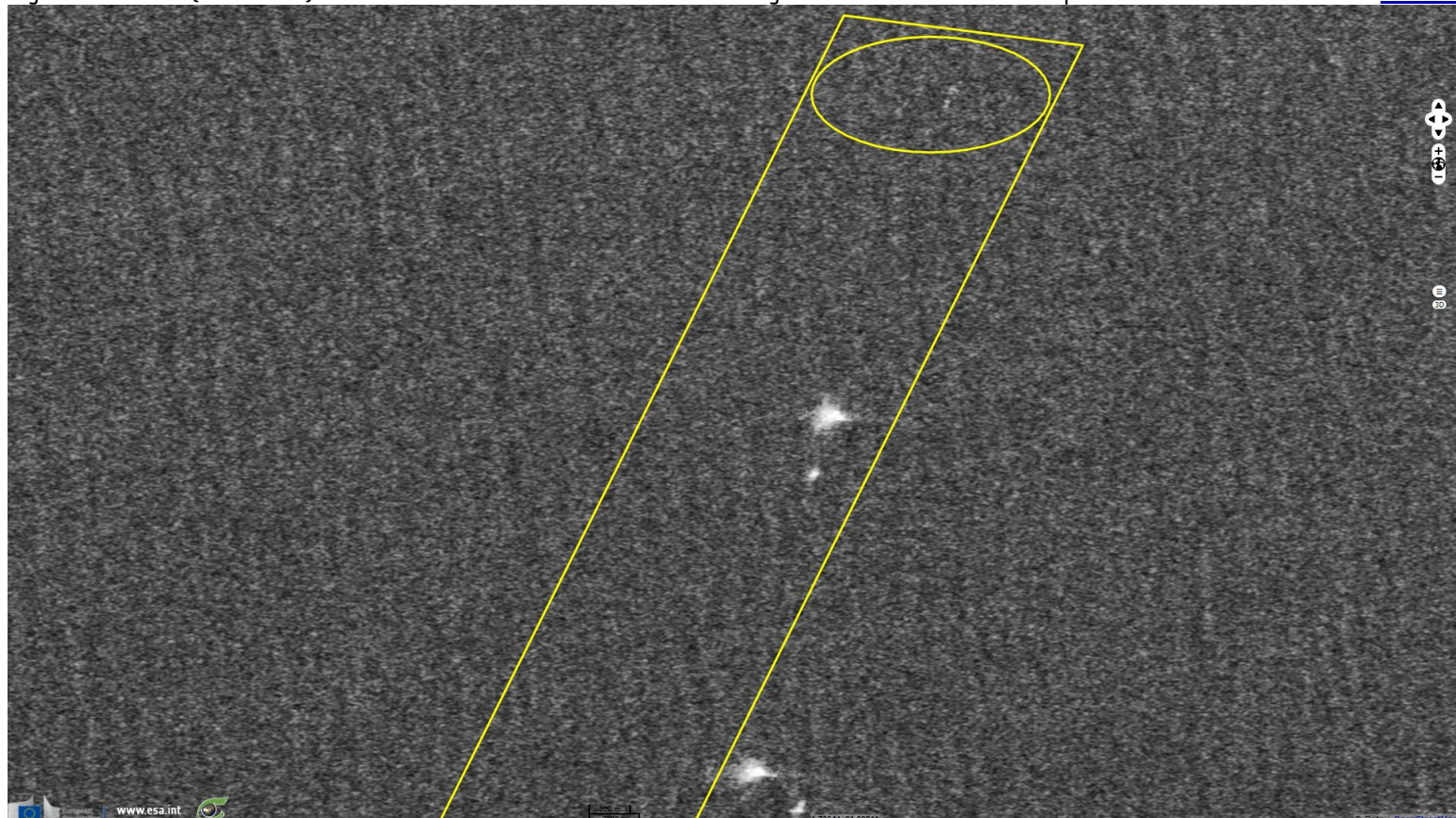


Fig. 9 - Sentinel-2 [25.01.2017] - Brent Delta's final destination, Seaton port.

[3D animation](#) [3D view](#)



Fig. 10 - Sentinel-1 [01.05.2017] - Pioneering Spirit (north, circled) approaching Seaton port; dock 6 was empty then.

[3D view](#)



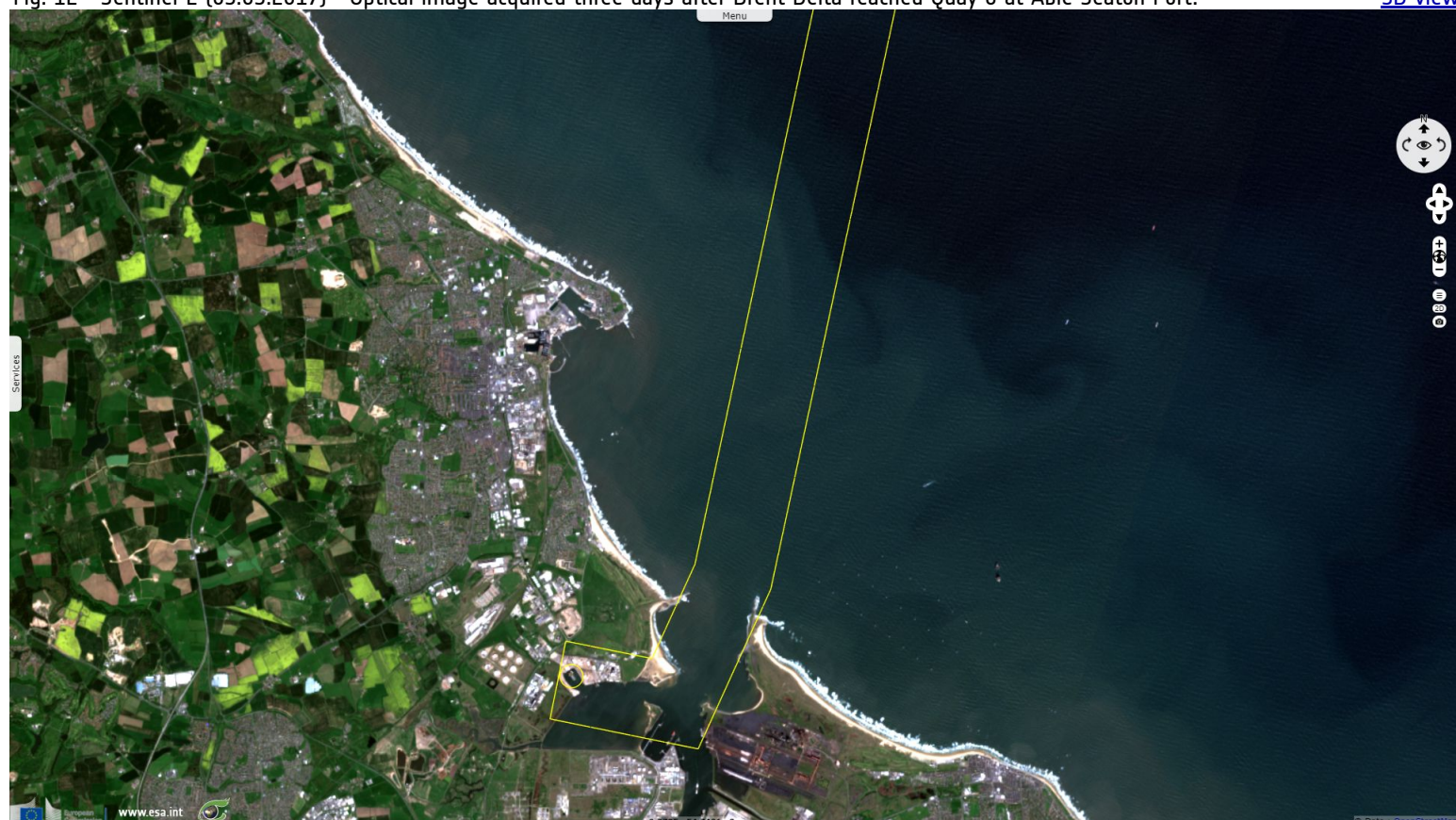
Fig. 11 - Sentinel-1 (03.05.2017) - Radar image acquired the day after Brent Delta reached Quay 6 where it will be decommissioned.

[3D view](#)



Fig. 12 - Sentinel-2 (05.05.2017) - Optical image acquired three days after Brent Delta reached Quay 6 at Able Seaton Port.













[3D view](#)





The Brent Delta platform at the newly-constructed Quay 6 at Able Seaton Port - source: [Hartlepool Mail](#)

The views expressed herein can in no way be taken to reflect the official opinion of the European Space Agency or the European Union.

More on European Commission space:									
More on ESA:				S-1 website	S-2 website	S-3 website			
More on Copernicus program:				SciHub portal	CopHub portal	Inthub portal	Colhub portal		
More on VisioTerra:				Sentinel Vision Portal	Envisat+ERS portal	Swarm+GOCE portal	CryoSat portal	Proba-V portal	