

Airports at stop in Paris, popular tourist destination

Sentinel-2 MSI acquired on 01 April 2019 at 10:50:29 UTC
Sentinel-2 MSI acquired on 05 April 2020 at 10:46:19 UTC

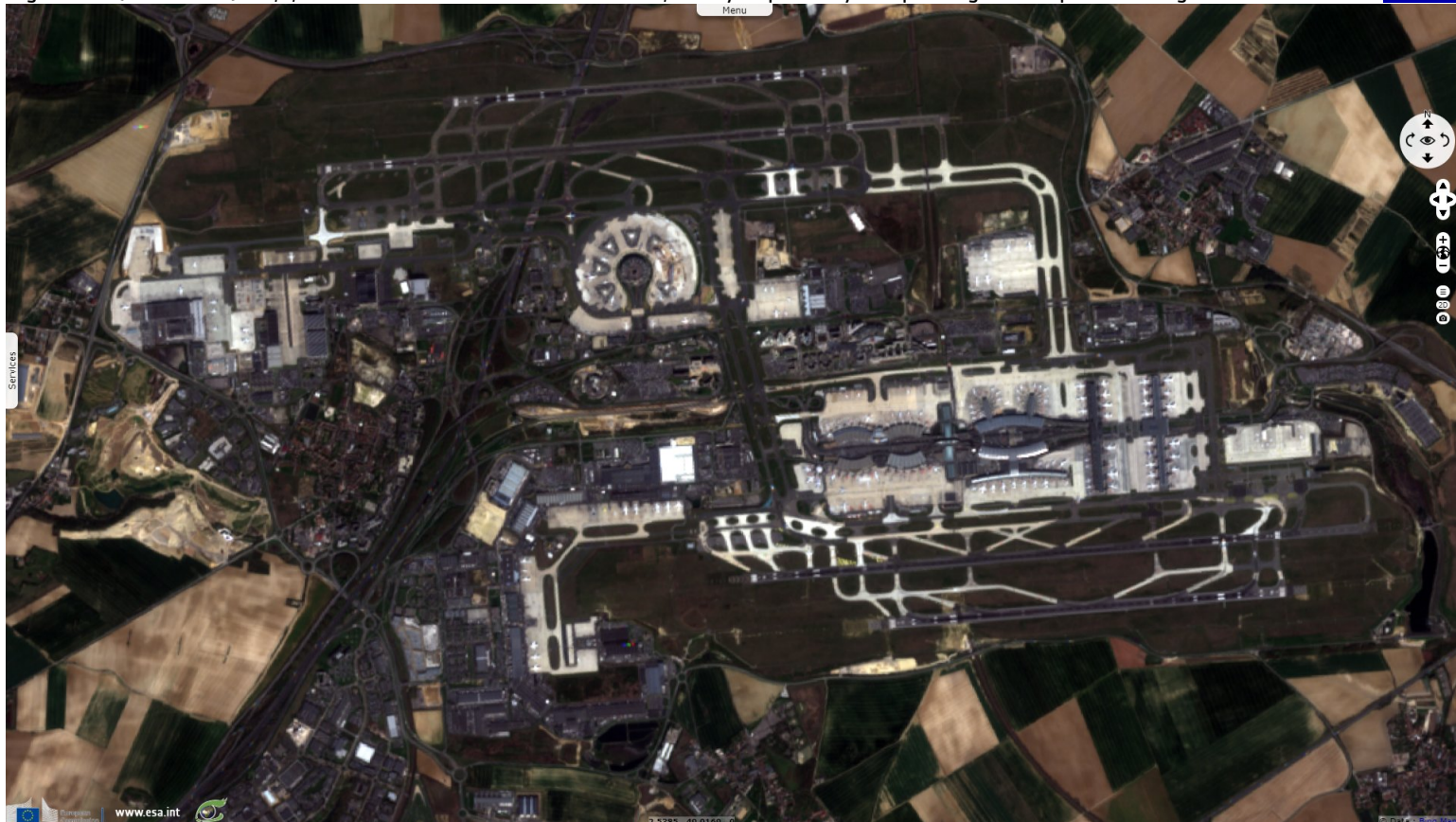
Author(s): Sentinel Vision team, VisioTerra, France - svp@visioterra.fr

Keyword(s): Plane, infrastructure, health, airport, transport, tourism, Paris, France

[3D Layerstack](#)

Fig. 1 - S2 (01.04.2019) - 4,3,2 natural colour - Since several weeks, Roissy airport only accepts cargo and repatriation flights.

[3D view](#)



Roissy Charles de Gaulle counts 4 runways, 76 millions passengers, direct flights to over 300 cities, to over 100 countries & 150 airlines.

Fig. 2 - S2 (05.04.2020) - France was visited by 89 million foreign tourists in 2017, making it the world's most popular tourist destination.

[3D view](#)



Fig. 3 - S2 (05.04.2020) - 4,3,2 natural colour - Orly airport, second biggest airport in France with over 33 millions passengers.

[3D view](#)



Fig. 4 - S2 (08.04.2020) - 4,3,2 natural colour - Orly airport is closed since 01.04.2020, its planes remain still, even parked on a runway.

[3D view](#)



*The views expressed herein can in no way be taken to reflect the official opinion of the European Space Agency or the European Union.
Contains modified Copernicus Sentinel data 2019, processed by VisioTerra.*

More on European Commission space:						
More on ESA:				S-1 website	S-2 website	S-3 website
More on Copernicus program:				SciHub portal	Cophub portal	Inthub portal
More on VisioTerra:				Sentinel Vision Portal	Envisat+ERS portal	Swarm+GOCE portal
					CryoSat portal	