

Seaweed production in South Korea's southern coast

Sentinel-1 CSAR IW acquired on **06 October 2019** at 21:32:21 UTC
Sentinel-2 MSI acquired on **10 October 2019** at 02:16:11 UTC
Sentinel-1 CSAR IW acquired on **17 December 2019** at 21:32:20 UTC
Sentinel-2 MSI acquired on **19 December 2019** at 02:21:11 UTC

Author(s): Sentinel Vision team, VisioTerra, France - svp@visioterra.fr

Keyword(s): Coastal, aquaculture, food security, water colour, algae, South Korea

[2D Layerstack](#)



Fig. 1 - S2 (10.10.2019) - 4,3,2 natural colour - South Korea land mass is near 100 000 km² which of only 20% is usable, mostly near coasts. [2D view](#)



Fig. 2 - S2 (19.12.2019) - Surrounded by sea on 3 sides, Koreans rely heavily on seafood consumption with 48kg per capita in 2005. [2D view](#)

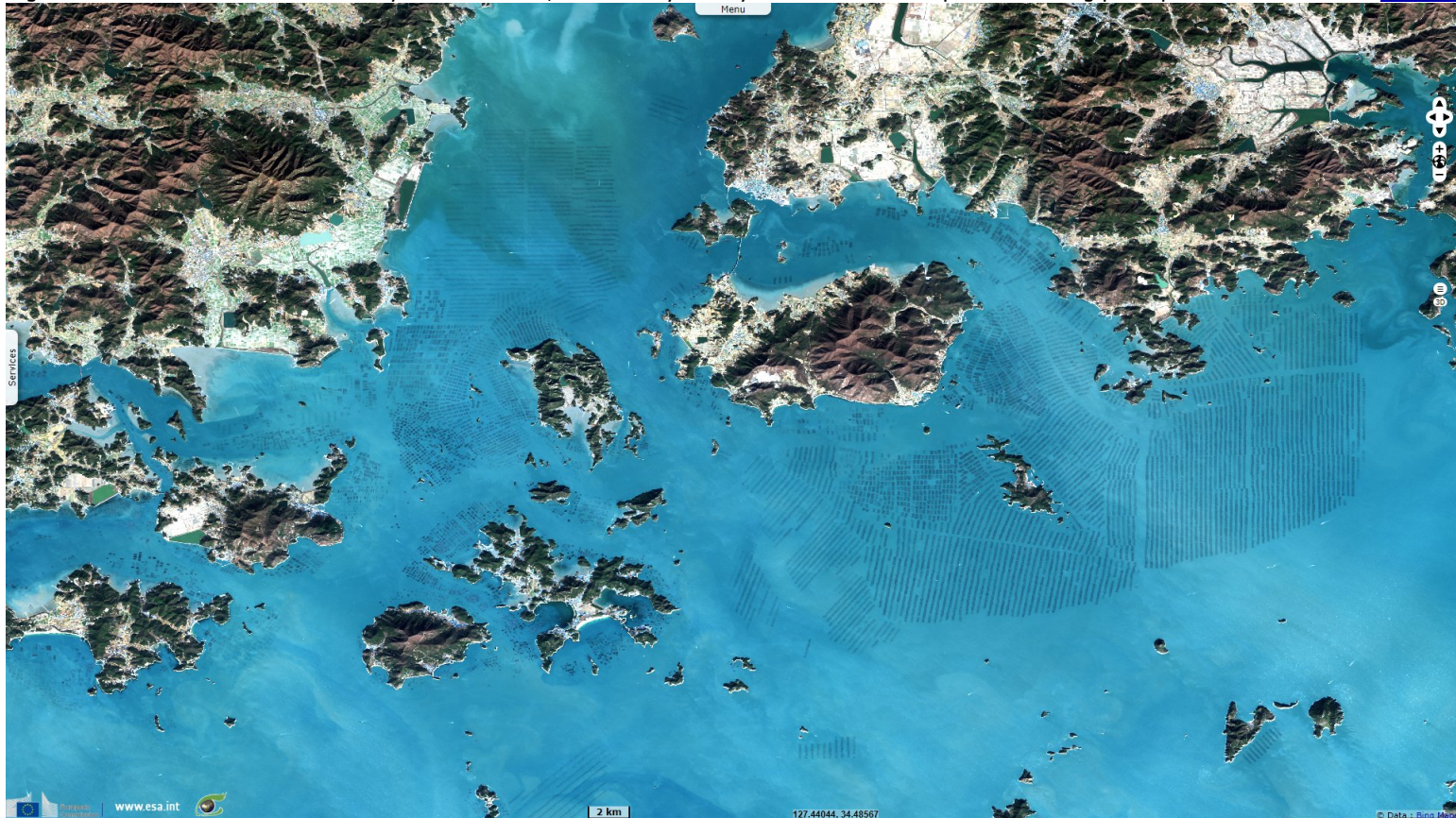


Fig. 3 - S1 (17.12.2019) - vh pol, jet colour map - Years of overfishing using the most modern techniques led to a steady decrease in capture. [2D view](#)

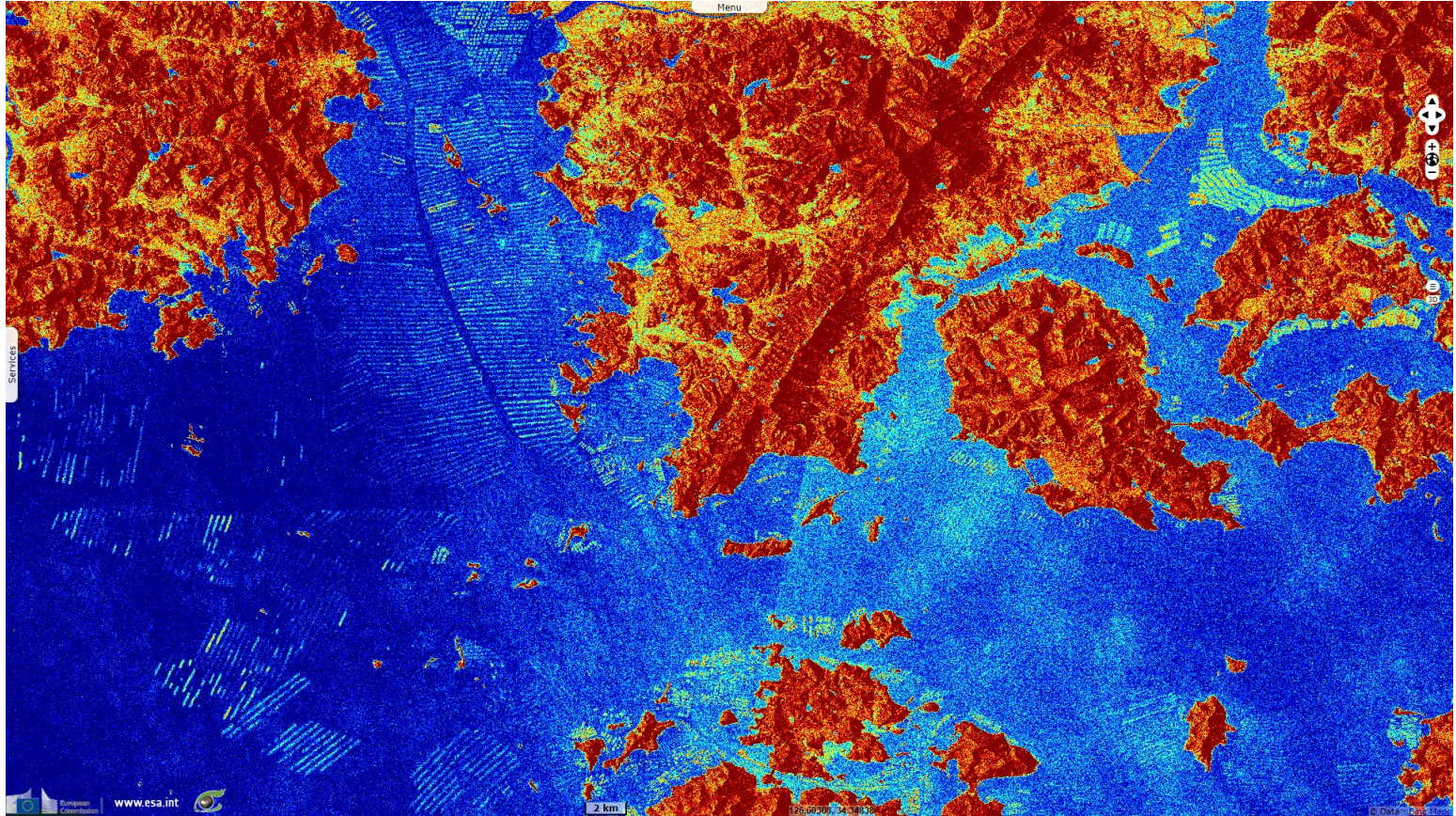
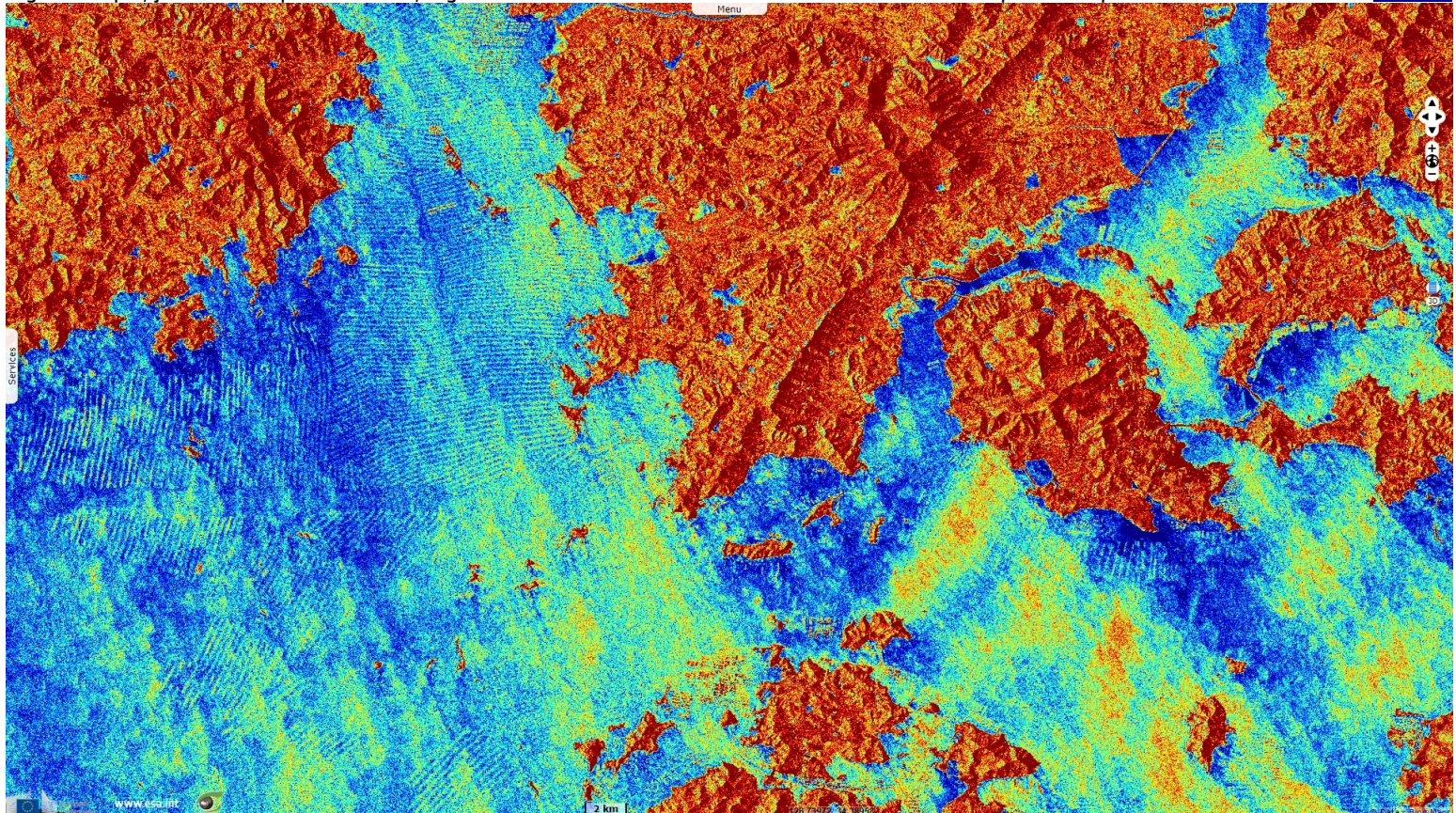


Fig. 4 - vv pol, jet colour map - Since then, a greater focus on seaweed allowed to meet 60% of the aquaculture production.. [2D view](#)



*The views expressed herein can in no way be taken to reflect the official opinion of the European Space Agency or the European Union.
Contains modified Copernicus Sentinel data 2019, processed by VisioTerra.*

More on European Commission space:						
More on ESA:				S-1 website	S-2 website	S-3 website
More on Copernicus program:				SciHub portal	COPERNICUS portal	InHub portal
More on VisioTerra:				Sentinel Vision Portal	Envisat+ERS portal	Swarm+GOCE portal