

At the crossroads of Persian Gulf, Black & Caspian Seas

Sentinel-3 OLCI FR acquired on 03 October 2016 at 07:12:34 UTC
Sentinel-3 SLSTR RBT acquired on 20 October 2017 at 07:08:51 UTC
Sentinel-3 SLSTR RBT acquired on 18 September 2019 at 07:12:46 UTC
Sentinel-1 CSAR IW acquired on 01 October 2019 at 15:10:00 UTC
Sentinel-2 MSI acquired on 02 October 2019 at 07:57:41 UTC

Author(s): Sentinel Vision team, VisioTerra, France - svp@visioterra.fr

Keyword(s): Hydrology, river, mountain range, endorheic basin, Turkey.

[3D Layerstack](#)



Fig. 1 - S3 SLSTR (20.10.2017 & 18.09.2019) - Camliyurt Tepesi lies in Erzurum province, in a subrange of the Armenian Highlands, Turkey. [2D view](#)

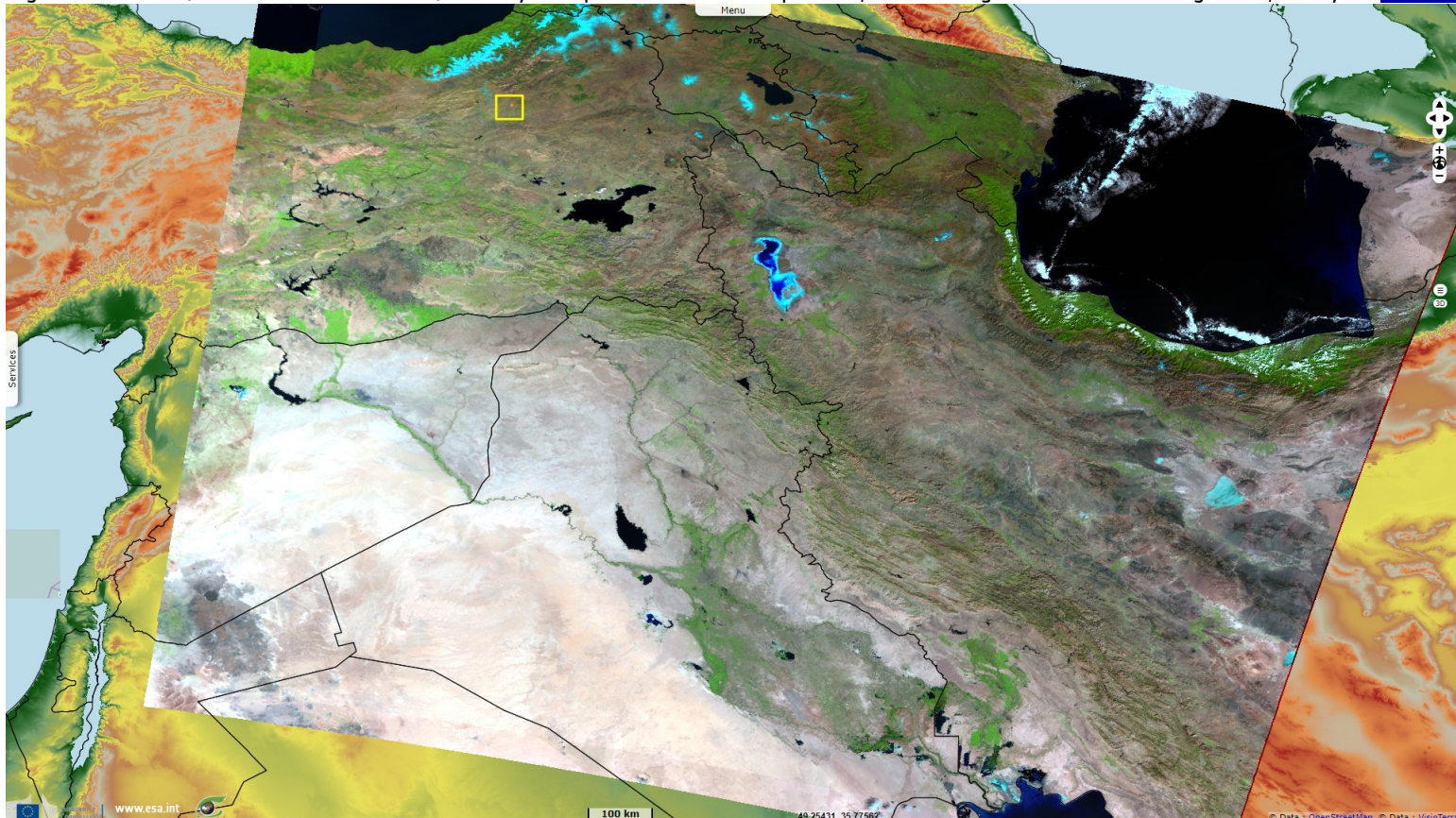


Fig. 2 - S3 OLCI (03.10.2016) - From this tripoint, water may reach Çoruh river, Black Sea and the Atlantic Ocean via Mediterranean Sea. [3D view](#)

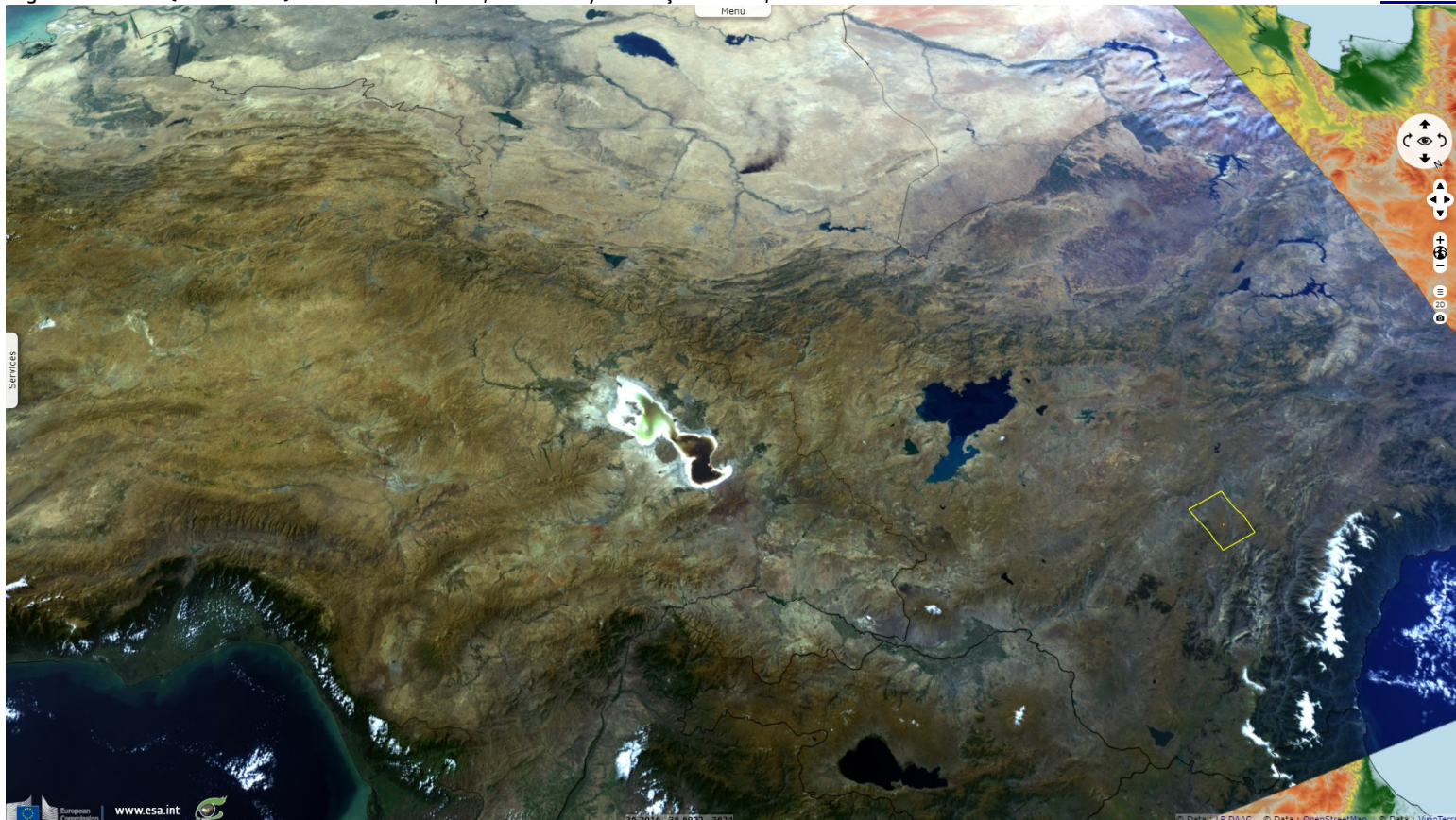


Fig. 3 - S1 (01.10.2019) - But rainfalls can also flow into the Euphrates river, reaching the Indian Ocean or terminate in the Caspian Sea. [3D view](#)

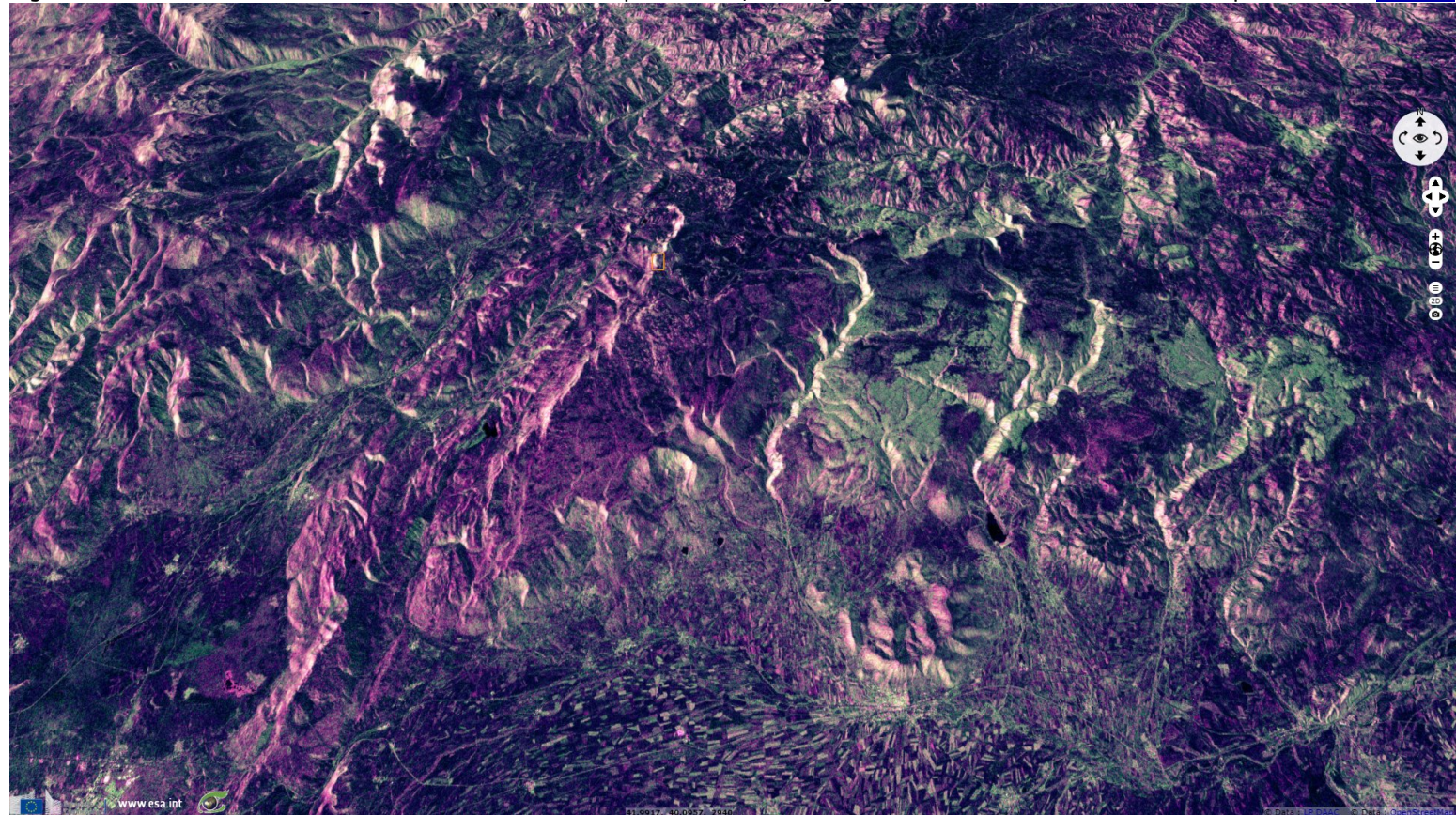
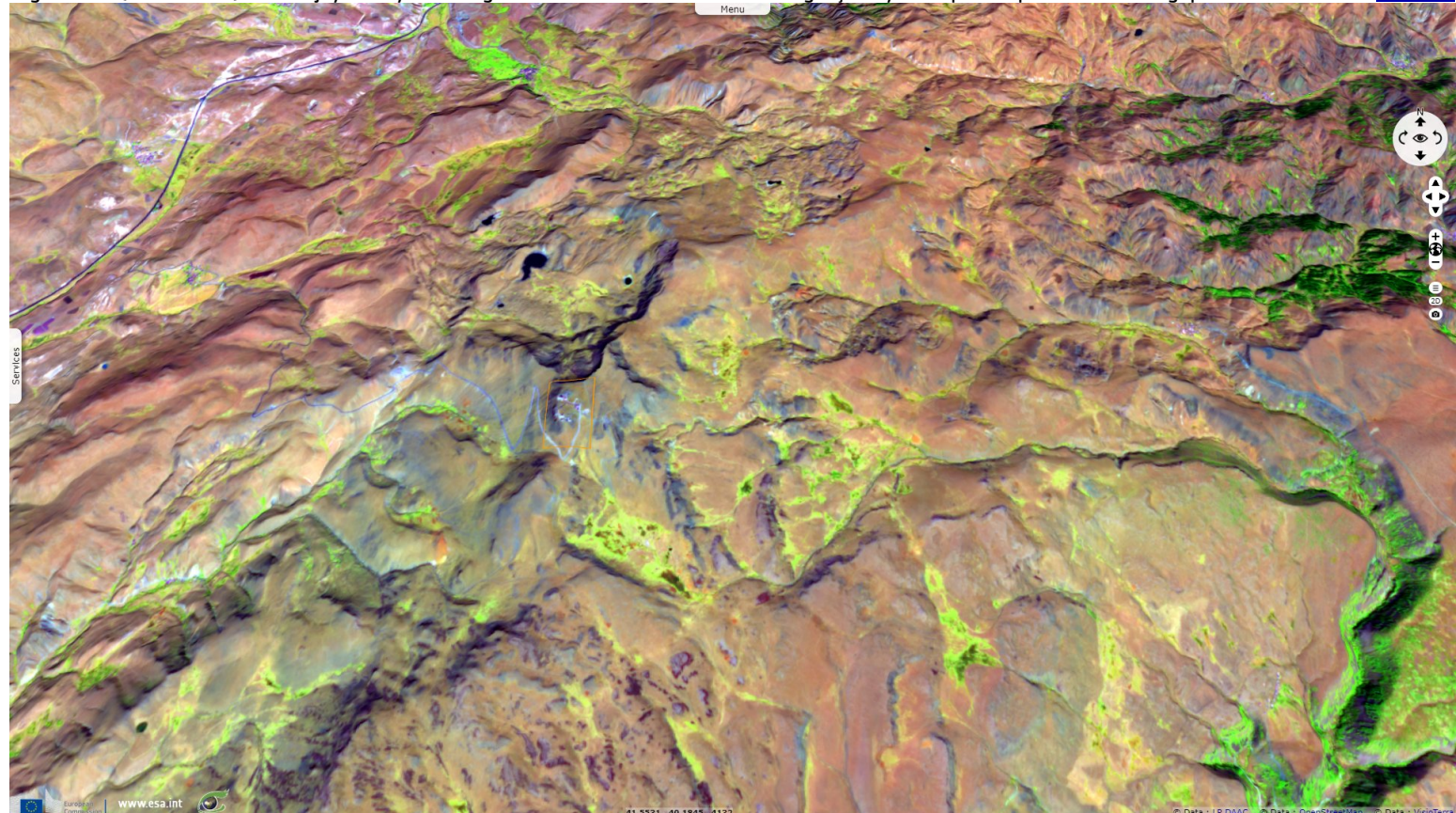


Fig. 4 - S2 (02.10.2019) - Guzeljaya Early-Warning radar site lies on this 3145m high Çamlıyurt Tepesi tripoint in the Kargapazarı Mountains. [3D view](#)



*The views expressed herein can in no way be taken to reflect the official opinion of the European Space Agency or the European Union.
Contains modified Copernicus Sentinel data 2019, processed by VisioTerra.*

More on European Commission space:						
More on ESA:				S-1 website	S-2 website	S-3 website
More on Copernicus program:				SciHub portal	Cophub portal	Inthub portal
More on VisioTerra:				Sentinel Vision Portal	Envisat+ERS portal	Swarm+GOCE portal
					CryoSat portal	