

Increased volcanic activity at south-west Iceland

Sentinel-1 CSAR IW acquired on 09 March 2021 from 18:58:04 to 18:58:29 UTC
Sentinel-2 MSI acquired on 30 March 2021 at 13:02:59 UTC
Sentinel-2 MSI acquired on 07 August 2021 at 13:02:59 UTC
Sentinel-2 MSI acquired on 12 August 2021 at 13:03:01 UTC
Sentinel-1 CSAR IW acquired on 18 August 2021 from 18:58:54 to 18:59:19 UTC

Author(s): Sentinel Vision team, VisioTerra, France - svp@visioterra.fr

Keyword(s): Geohazard, volcano, lava flow, Iceland, Mid-Atlantic ridge.



[2D Layerstack](#)

Fig. 1 - S2 (30.03.2021) - Krýsuvík-Trölladyngja volcano lies at south-west of Iceland, close to Fagradalsfjall on the Reykjanes Peninsula.

[3D view](#)

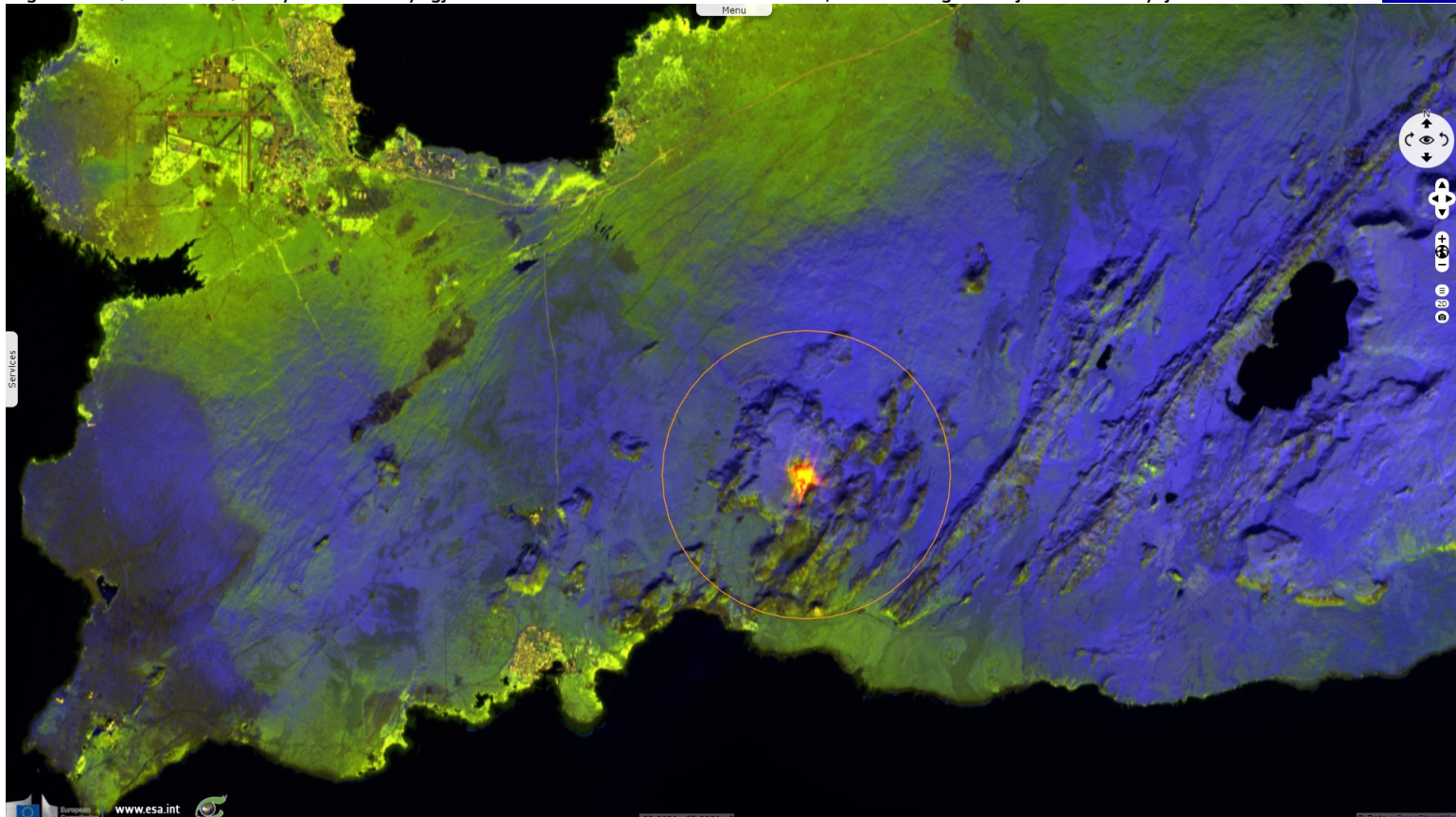


Fig. 2 - S2 (07.08.2021) - The fissure eruption in the Western part of the Krýsuvík-Trölladyngja volcanic system continued during August.

[3D view](#)

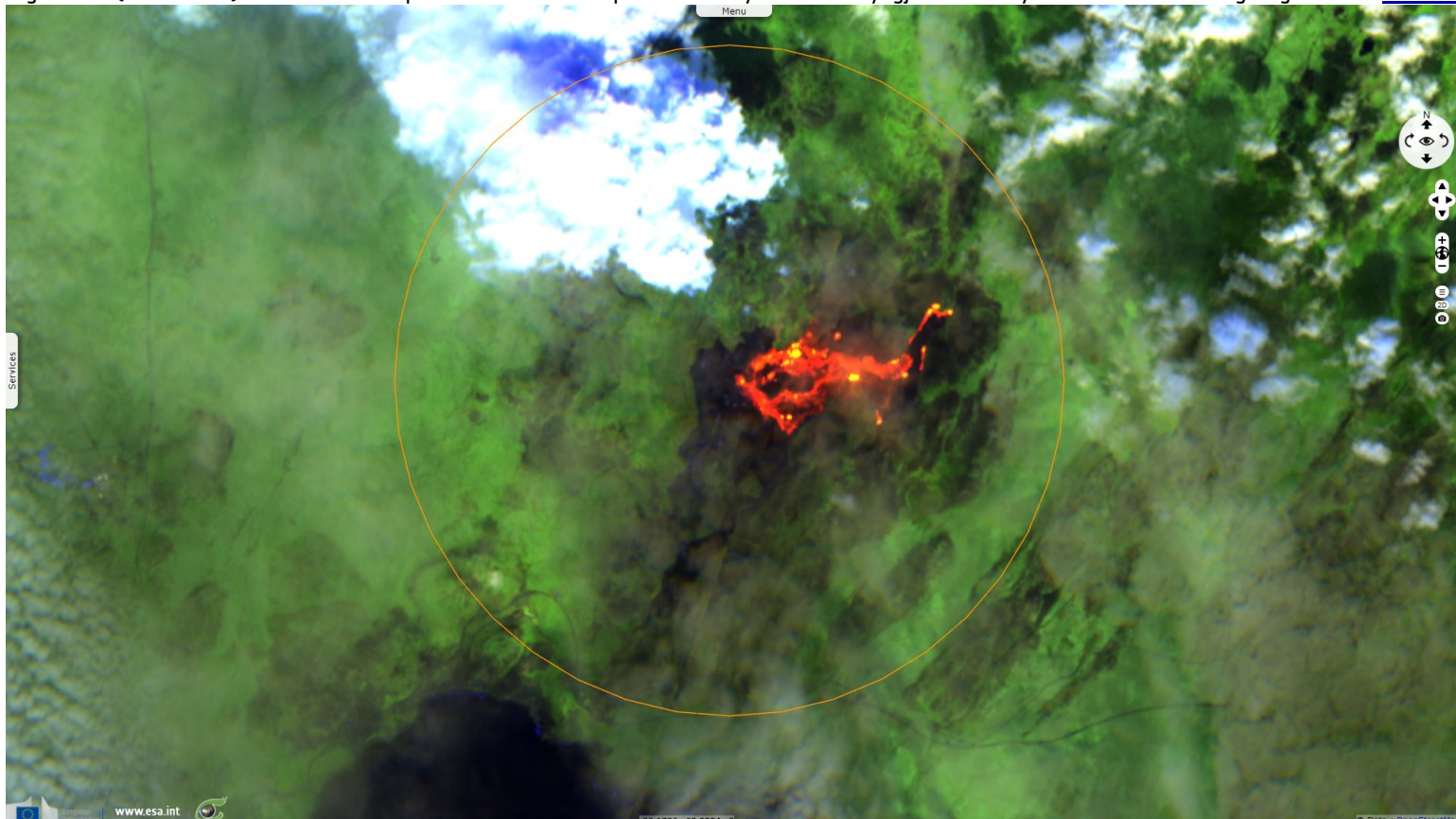


Fig. 3 - S2 (12.08.2021) - Analysis show the lava effusion rate averaged 9.3 cubic meters per second over the previous 12 days.

[3D view](#)

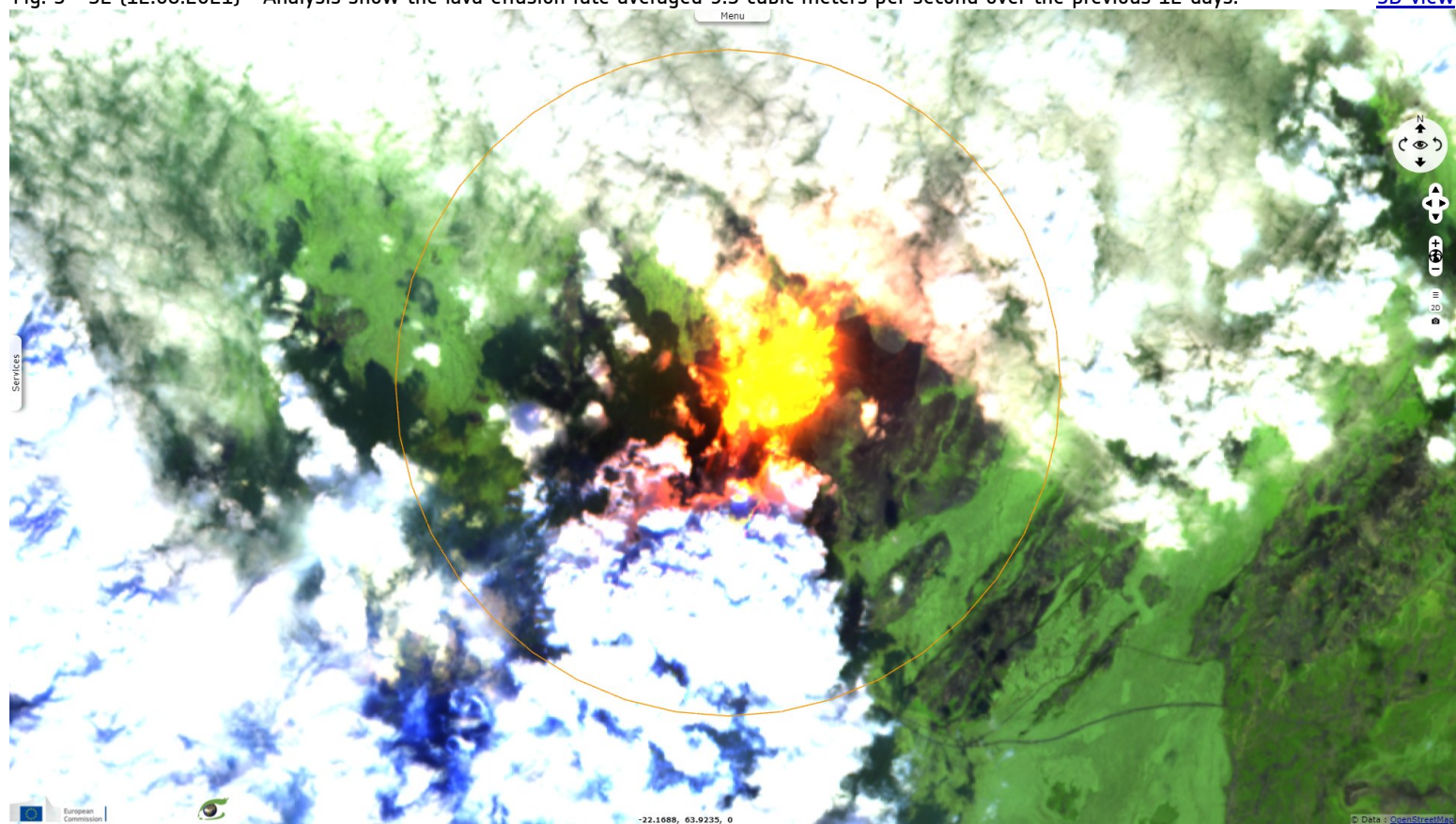


Fig. 4 - S1 (09.03.2021) - On the old lava, the vh polarisation is lower than the vv which differs from the fresh flows.

[3D view](#)

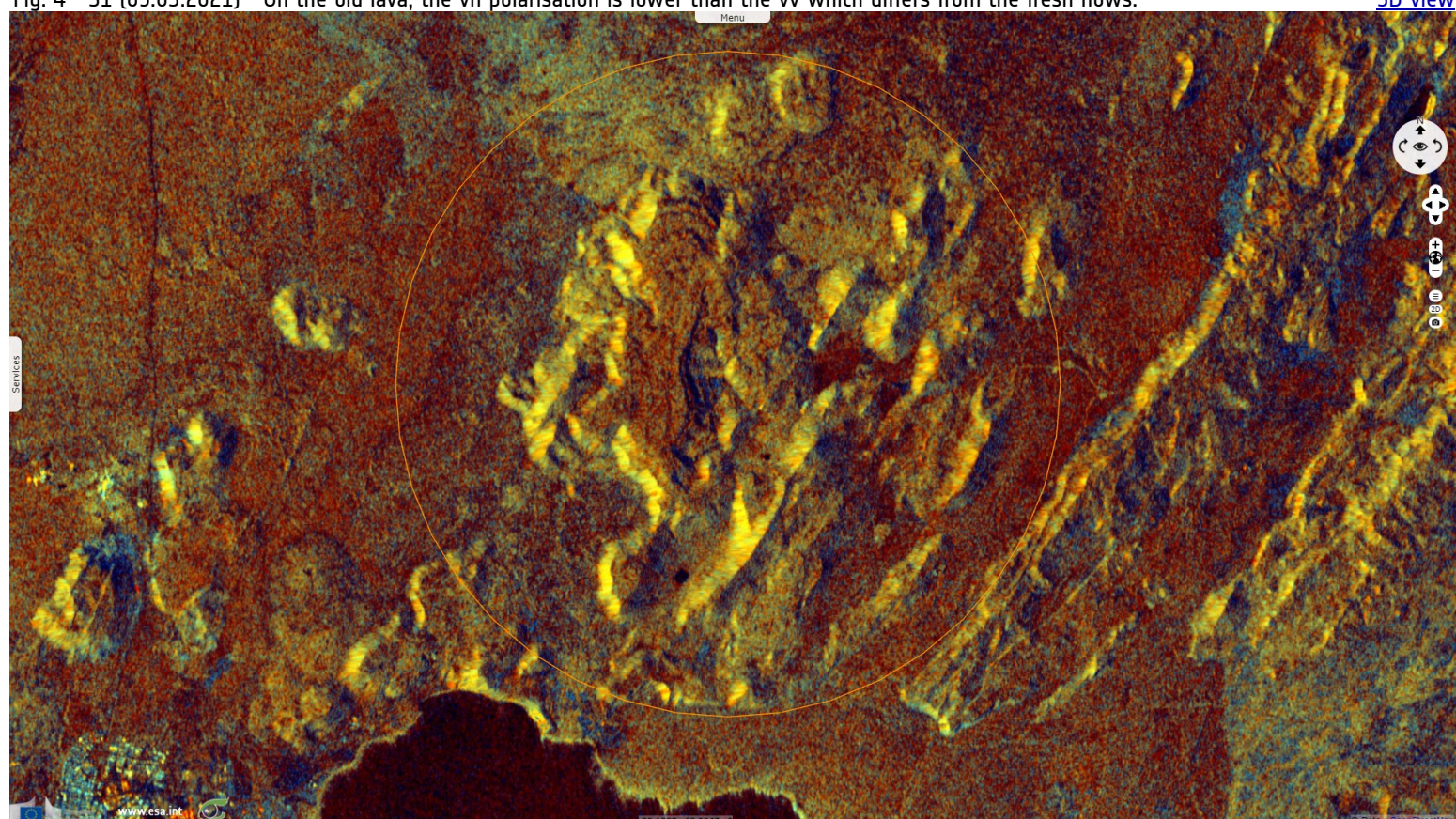


Fig. 5 - S1 (18.08.2021) - A new cone quickly grew from intense spattering and by 17 August was the same height as the main crater. [3D view](#)

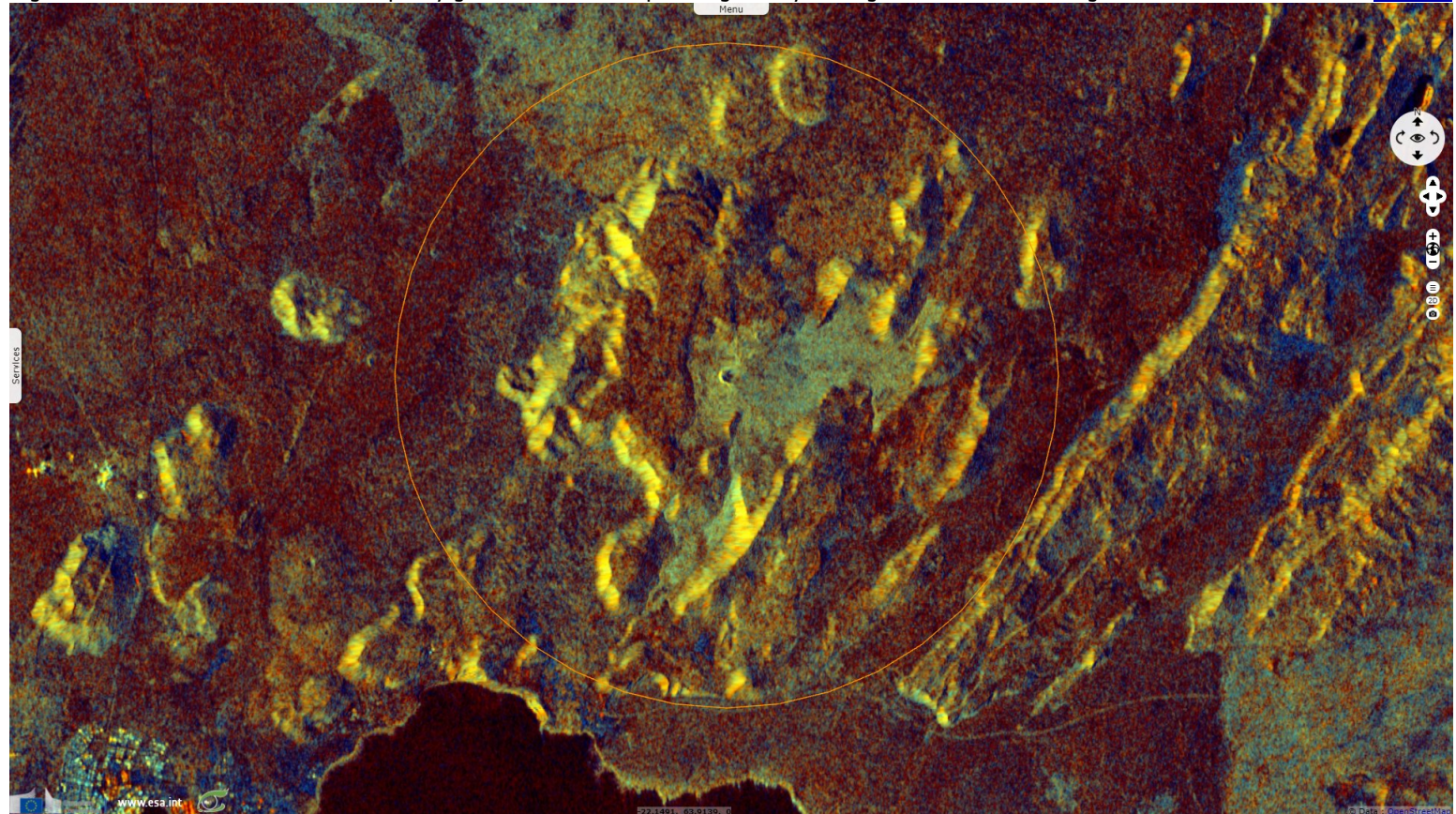
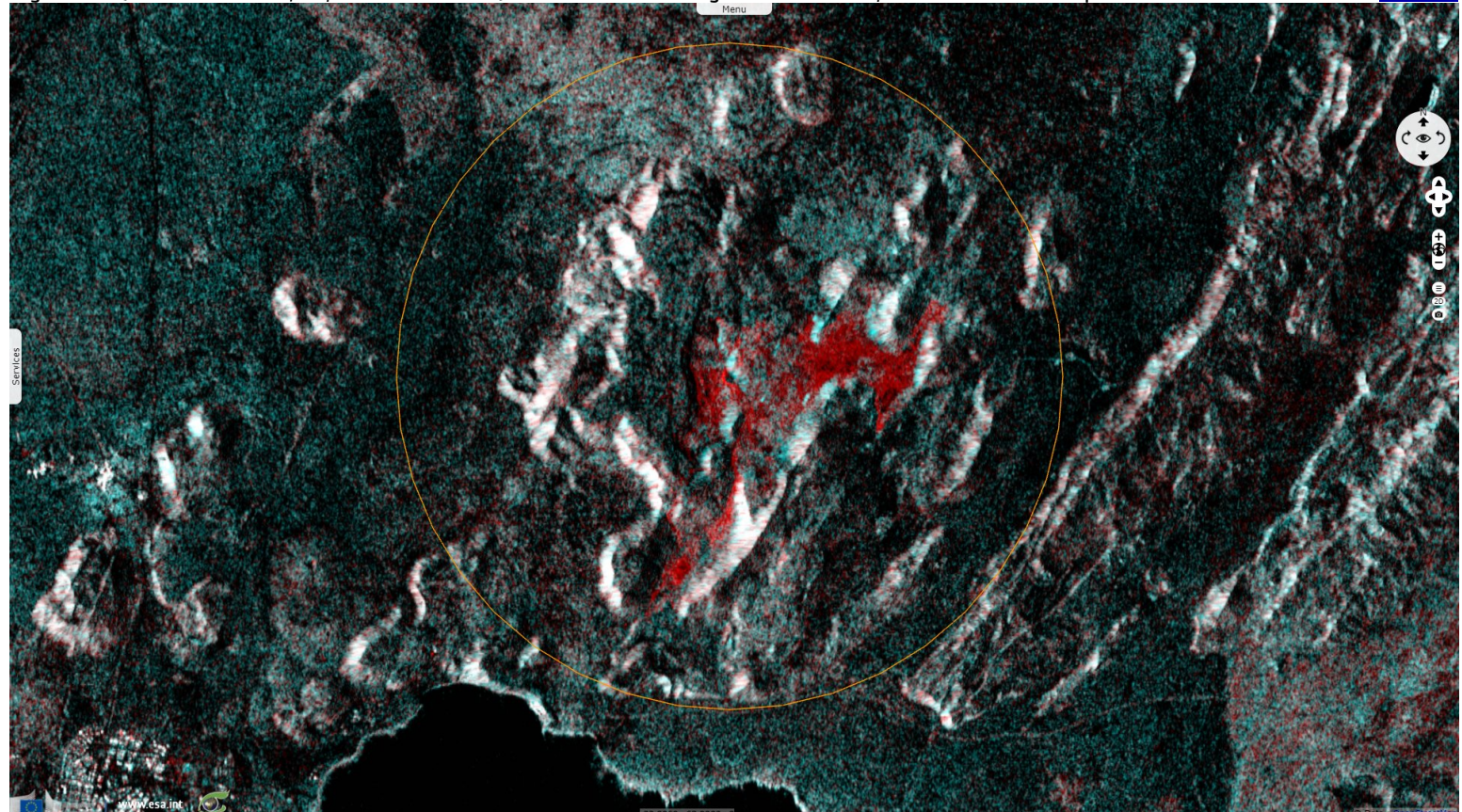


Fig. 6 - S1 (09 & 15.03.2021; 12, 18 & 24.08.2021) - The flow field has grown to 4.4 km², the total volume erupted to 119 million m³. [3D view](#)



*The views expressed herein can in no way be taken to reflect the official opinion of the European Space Agency or the European Union.
Contains modified Copernicus Sentinel data 2021, processed by VisioTerra.*

More on European Commission space:						
More on ESA:				S-1 website	S-2 website	S-3 website
More on Copernicus program:				SciHub portal	Cophub portal	Inthub portal
More on VisioTerra:				Sentinel Vision Portal	Envisat+ERS portal	Swarm+GOCE portal
					CryoSat portal	