

Ramstein air base, transit camp for Afghan refugees, Germany

Sentinel-2 MSI acquired on 15 August 2021 at 10:36:29 UTC
Sentinel-1 CSAR IW acquired on 27 August 2021 at 05:42:44 UTC
Sentinel-1 CSAR IW acquired on 29 August 2021 at 17:23:41 UTC
Sentinel-1 CSAR IW acquired on 30 August 2021 at 17:16:25 UTC

Author(s): Sentinel Vision team, VisioTerra, France - svp@visioterra.fr

Keyword(s): Infrastructure, security, urban planning, Germany



[2D Layerstack](#)

Fig. 1 - S1 (29.08.2021) - Next to Kaiserslautern, 60 km from the French border, Ramstein Air Base is the largest American military facility outside mainland U.S.

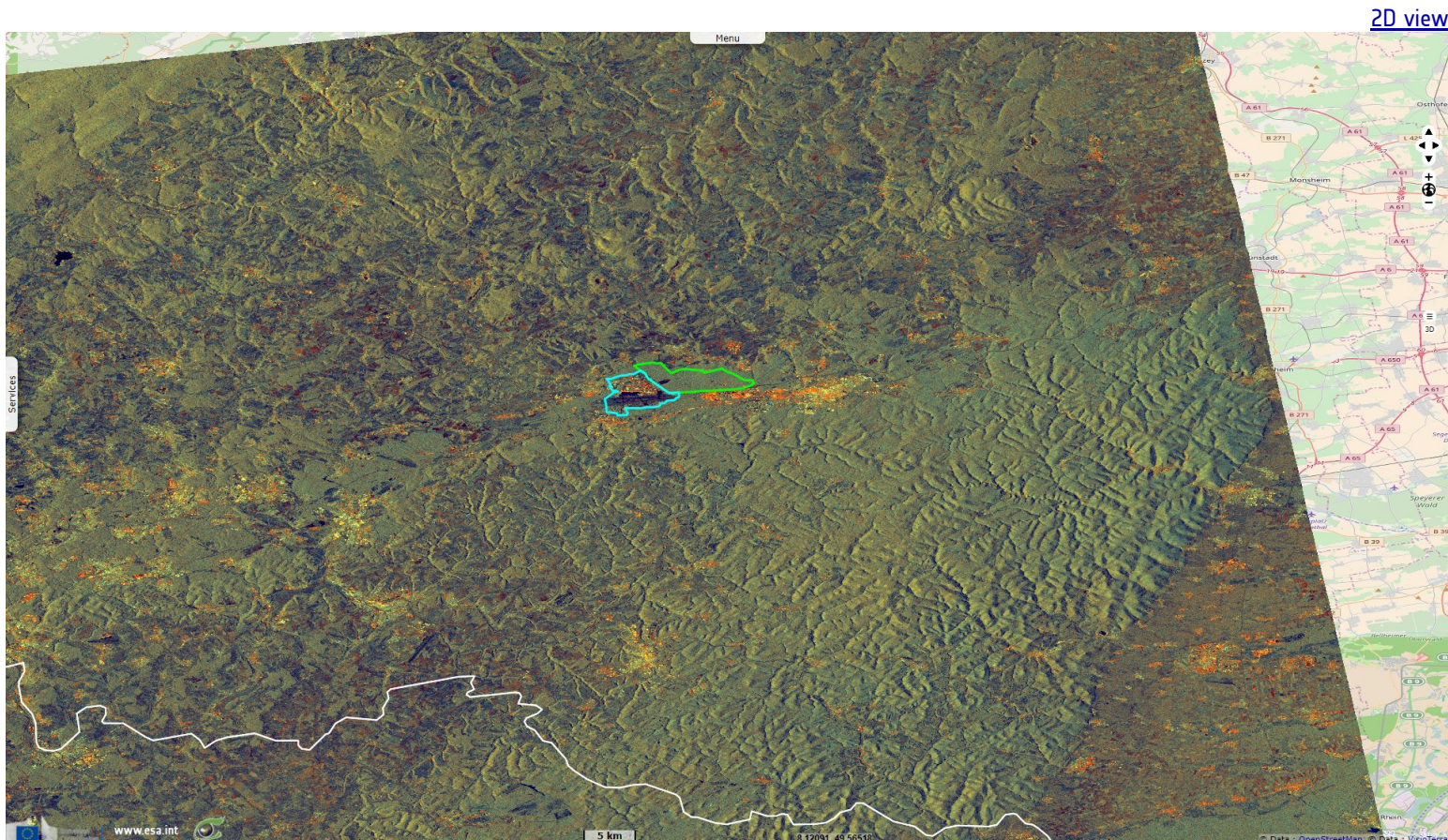
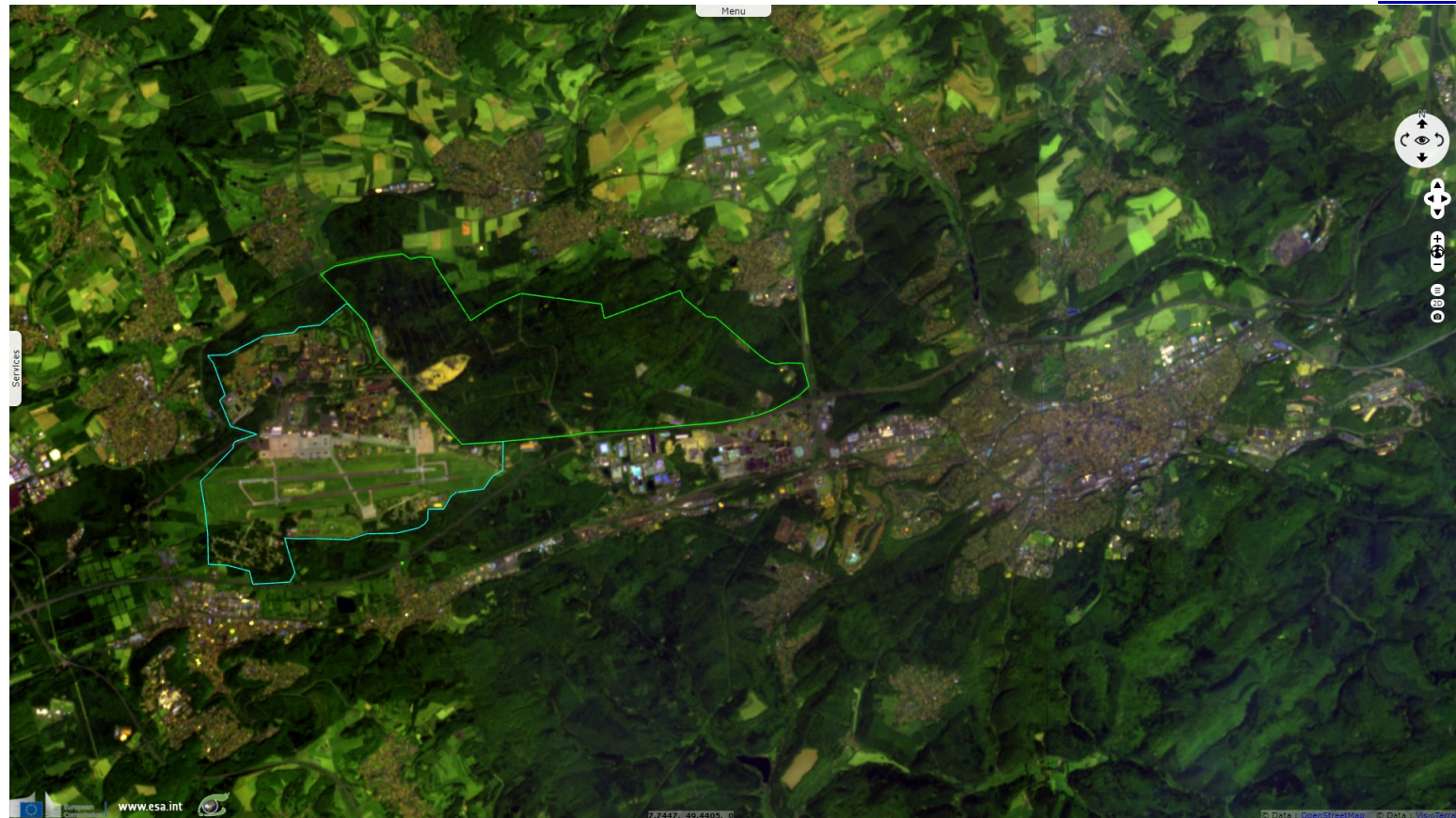


Fig. 2 - S2 (15.08.2021) - While many other NATO & US bases lie in the Rhineland-Palatinate, most U.S. troops in Germany are stationed at the Ramstein Air Base.

[2D view](#)



It was transformed overnight into a gigantic camp for refugees from Afghanistan, able to host 17000 to 25000 people, half the US capacity in Europe.

Fig. 3 - S1 (27, 29 & 30.09.2021) - The first evacuees stayed an average of four days before they obtained their visa to the United States.

[3D view](#)

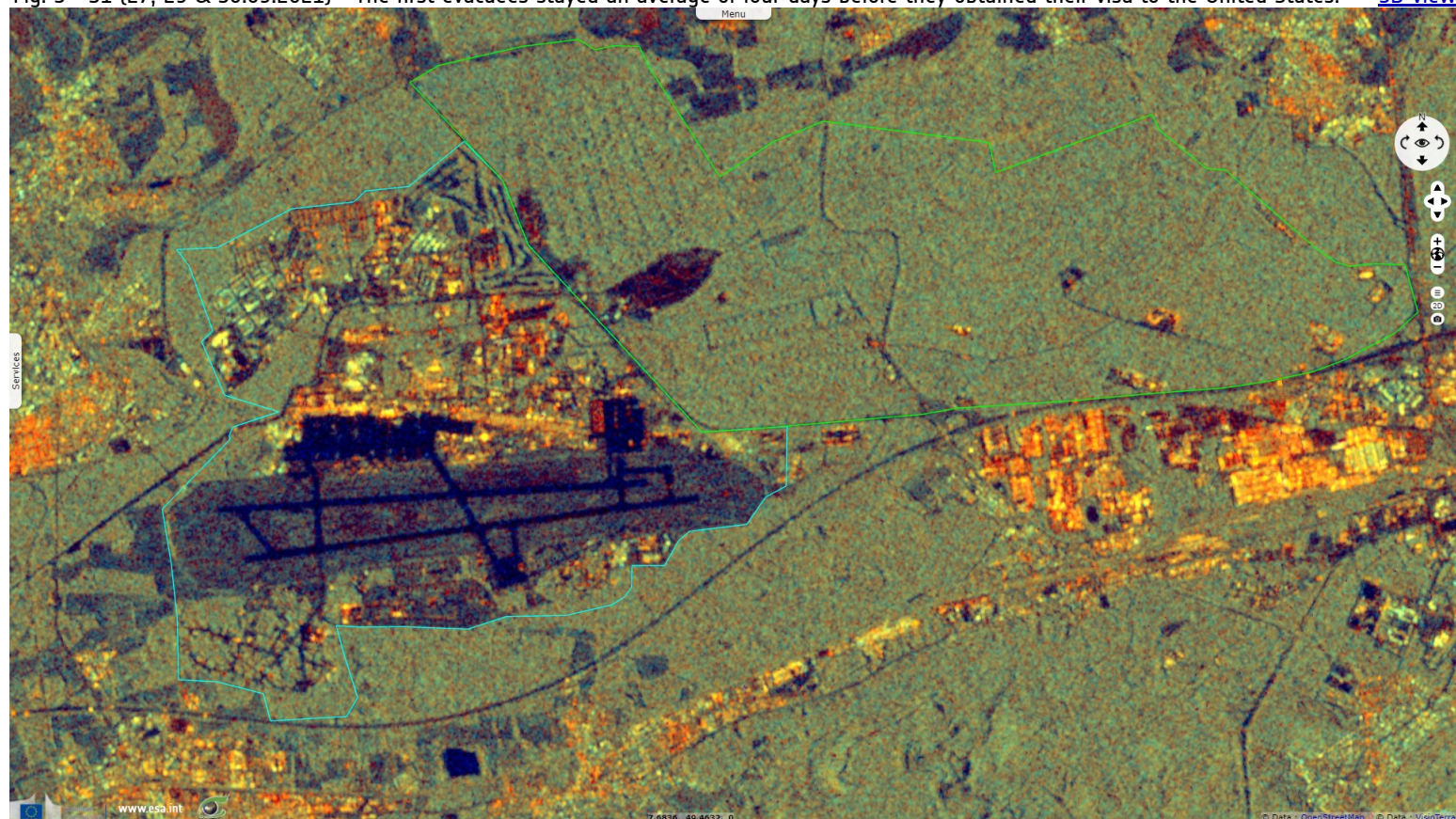














Fig. 4 - S2 (15.08.2021) - As more people arrived, the main challenge is to get these people to the US quickly enough to make room for the next emergency intake.



*The views expressed herein can in no way be taken to reflect the official opinion of the European Space Agency or the European Union.
Contains modified Copernicus Sentinel data 2021, processed by VisioTerra.*

More on European Commission space:							
More on ESA:				S-1 website	S-2 website	S-3 website	
More on Copernicus program:				SciHub portal	Cophub portal	Inthub portal	Colhub portal
More on VisioTerra:				Sentinel Vision Portal	Envisat+ERS portal	Swarm+GOCE portal	CryoSat portal