

Sentinels combine efforts to monitor Hurricane Michael

Sentinel-3 SRAL LAND acquired on 09 October 2018 at 15:58:33 UTC
Sentinel-3 SLSTR RBT acquired on 09 October 2018 at 15:59:23 UTC
Sentinel-2 MSI acquired on 09 October 2018 at 16:11:49 UTC
Sentinel-1 CSAR EW acquired on 10 October 2018 from 11:49:07 to 11:50:11 UTC
Sentinel-3 OLCI FR acquired on 13 October 2018 from 15:52:39 to 15:55:39 UTC

Author(s): Sentinel Vision team, VisioTerra, France - svp@visioterra.fr

Keyword(s): Emergency, natural disaster, atmosphere, storm, climate, wind, rain, precipitations, cyclone, USA, United States



[2D Layerstack](#)

[3D view](#)

Fig. 1 - S2 (09.10.2018) - 12,11,8 colour composite - Zoom in on the eye of Hurricane Michael.

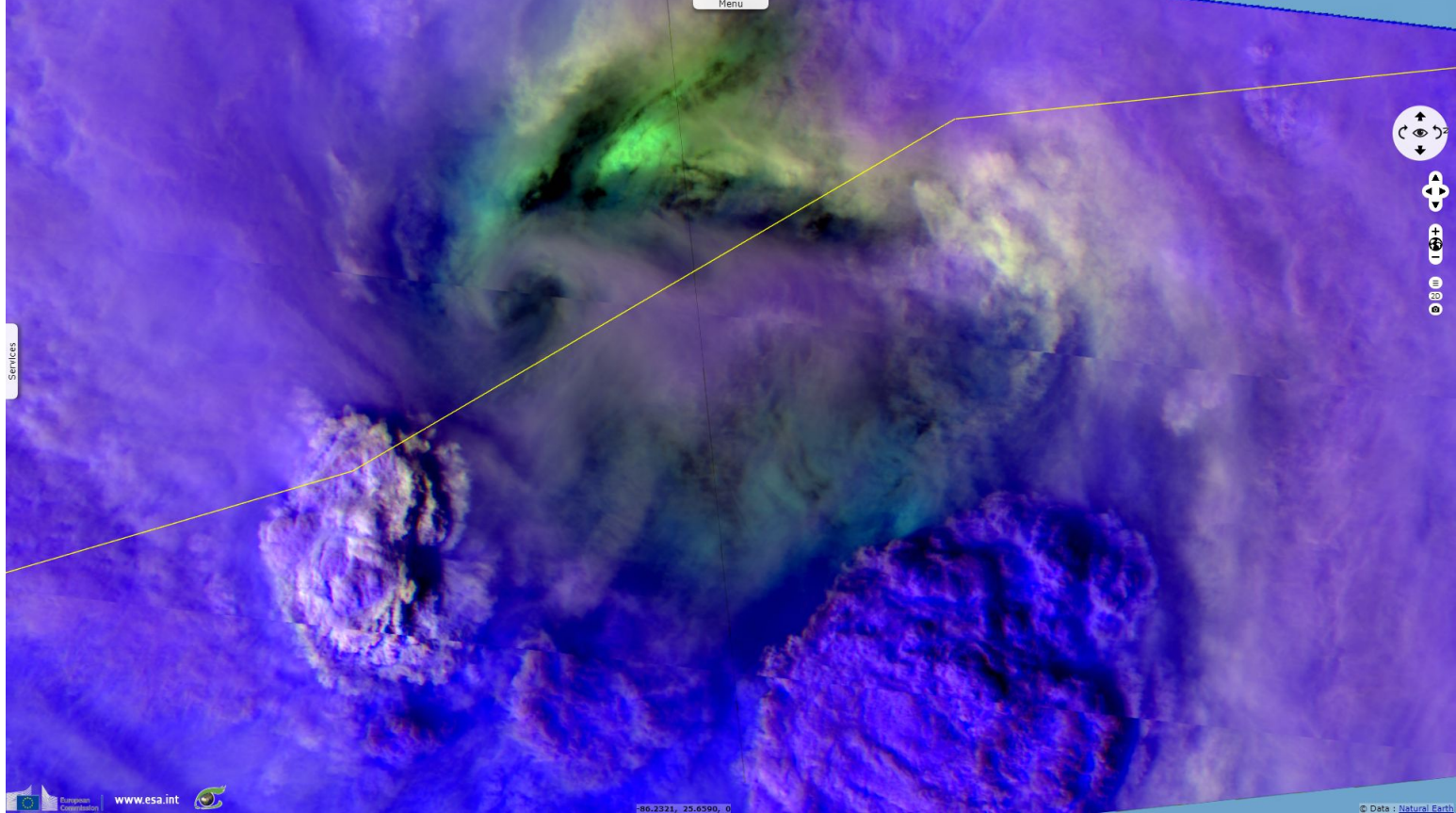


Fig. 2 - S3 (09.10.2018) - SLSTR (S8 thermal band with colour map) & SRAL (Corrected ocean significant waveheight 1hz Plrm Ku).

[3D view](#)

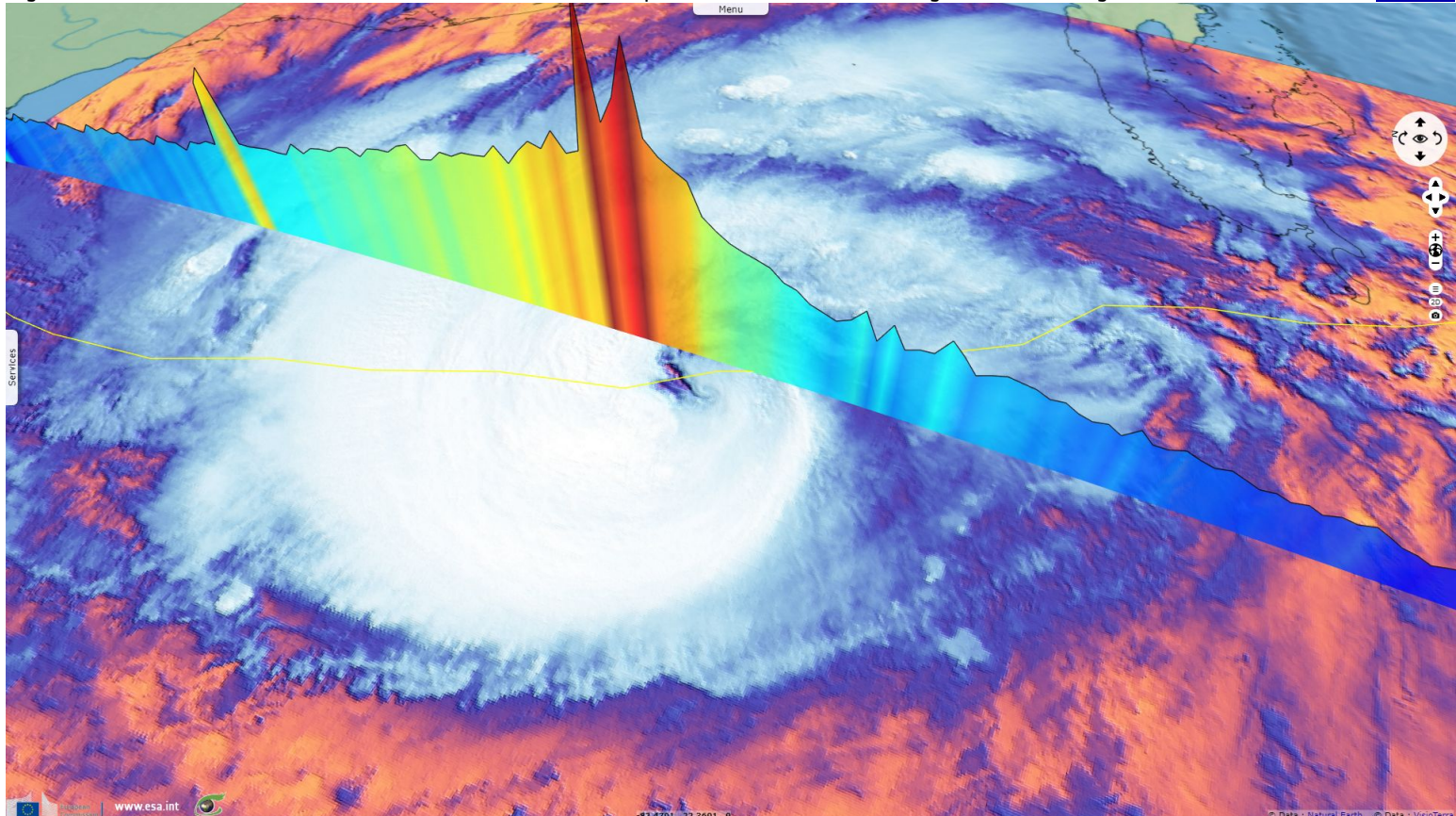


Fig. 3 - S1 EW (10.10.2018, 11:50) - vv,vh,vv colour composite - The hurricane still strengthening as it approaches Florida.

[3D view](#) [2D animation](#)

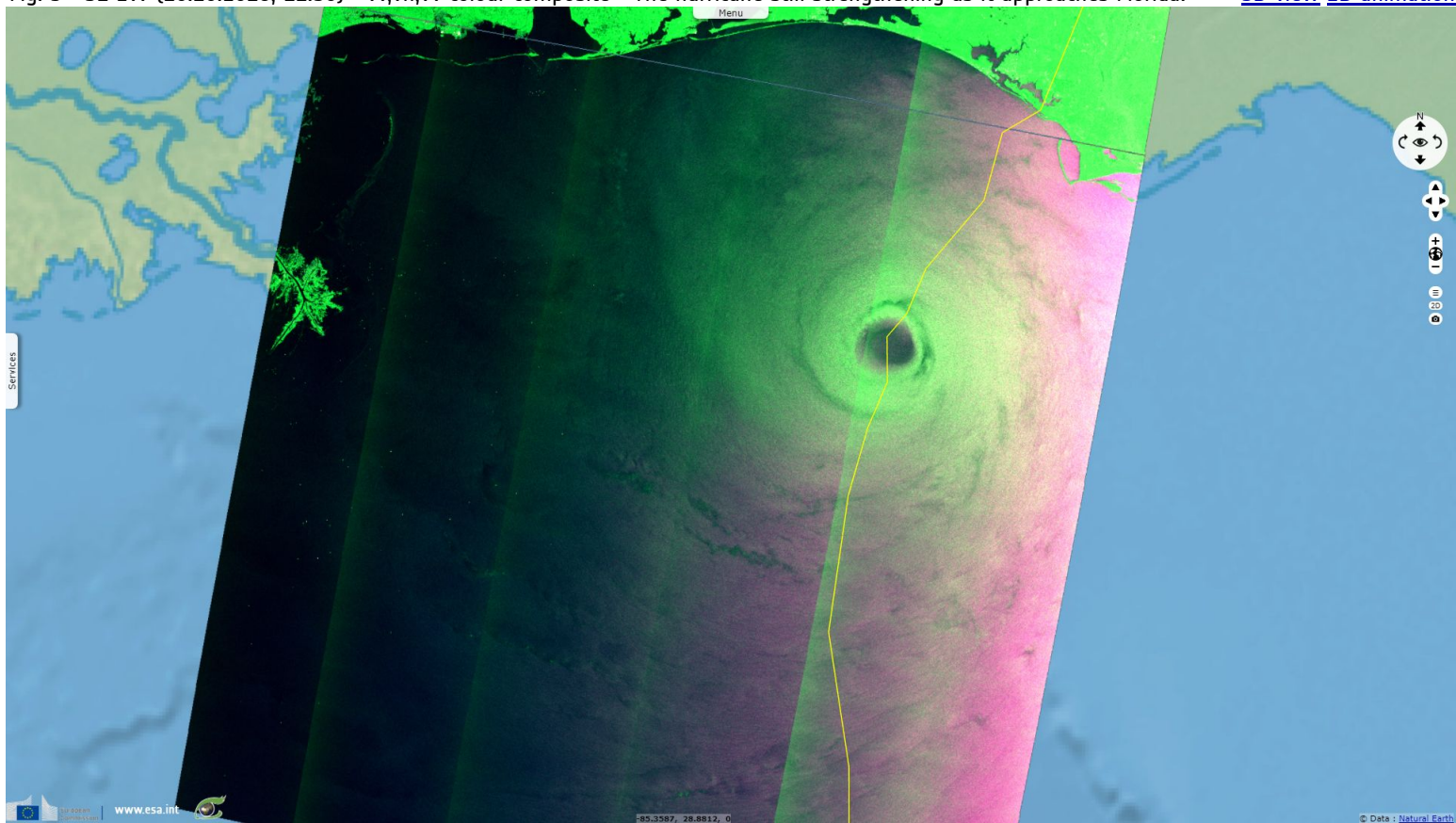
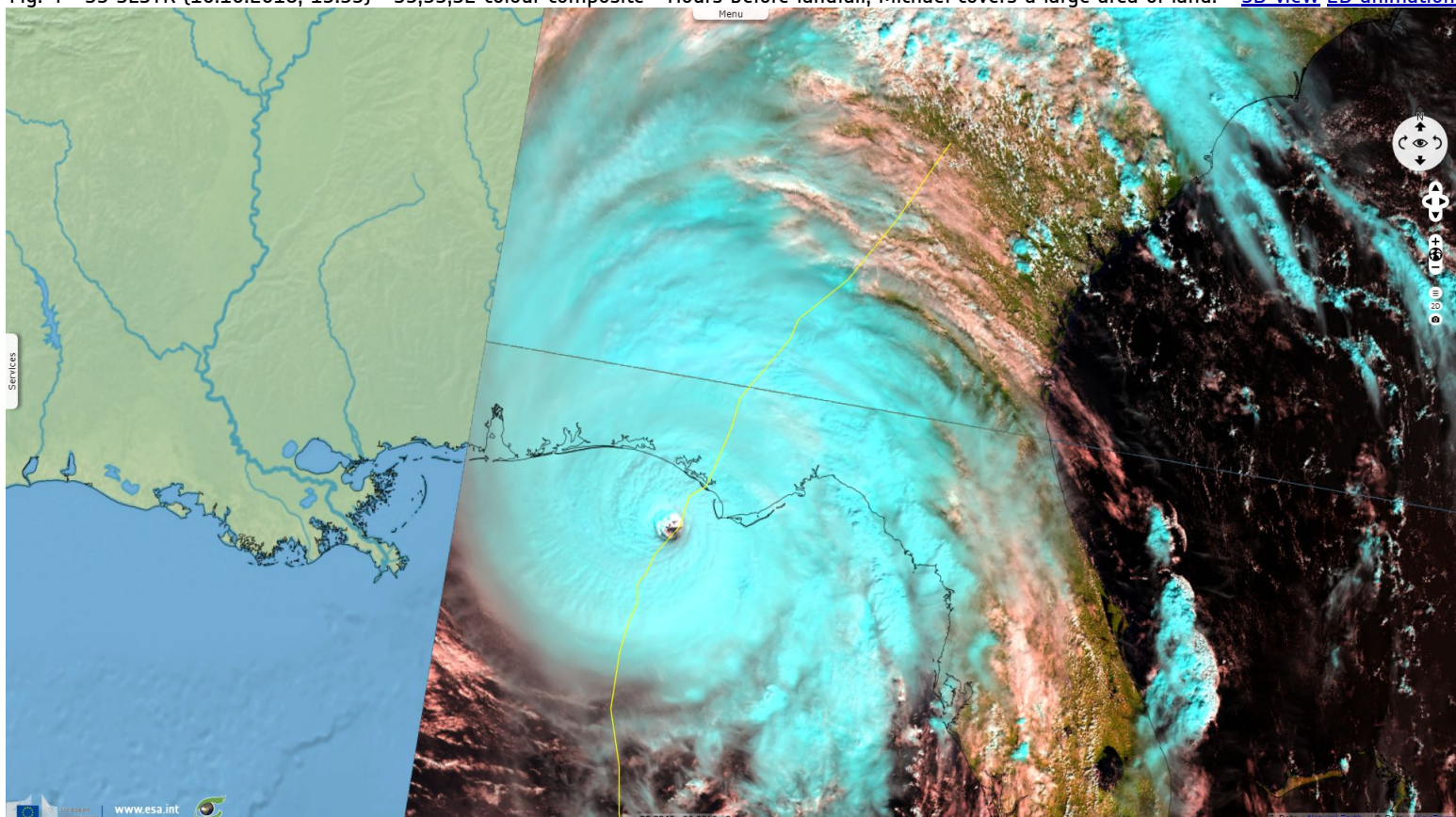


Fig. 4 - S3 SLSTR (10.10.2018, 15:33) - S5,S3,S2 colour composite - Hours before landfall, Michael covers a large area of land.

[3D view](#) [2D animation](#)



Finding warm waters on its path, Michael reached it apex at 18:00, just before making landfall, blowing 250 km/h winds.

Fig. 5 - S3 OLCI (13.10.2018) - 7,6,4 colour composite - Heavy rainfalls increased runoff, sediment & plankton-friendly nutrients.

[3D view](#) [2D view](#)



The views expressed herein can in no way be taken to reflect the official opinion of the European Space Agency or the European Union.

More on European Commission space:



More on ESA:



[S-1 website](#)

[S-2 website](#)

[S-3 website](#)

More on Copernicus program:



[SciHub portal](#)

[CopHub portal](#)

[Inthub portal](#)

[Colhub portal](#)

More on VisioTerra:



[Sentinel Vision Portal](#)

[Envisat+ERS portal](#)

[Swarm+GOCE portal](#)

[CryoSat portal](#)

[Proba-V portal](#)



Funded by the EU and ESA

SED-330-SentinelVision

