

The long detour of Rio Paraiba do Sul, Brazil

Sentinel-2 MSI acquired on 19 August 2021 at 13:12:51 UTC

...

Sentinel-2 MSI acquired on 23 August 2021 at 12:53:11 UTC

Sentinel-1 CSAR IW acquired on 13 December 2021 from 08:29:50 to 08:30:40 UTC

Sentinel-1 CSAR IW acquired on 20 December 2021 from 08:21:28 to 08:22:18 UTC

Author(s): Sentinel Vision team, VisioTerra, France - svp@visioterra.fr

Keyword(s): River, hydrology, mountain range, Brazil



[2D Layerstack](#)

Fig. 1 - COP-DEM - Rio Paraiba do Sul starts its course 20 km from the sea but its mouth is located 1137 km from its source.

[2D view](#)

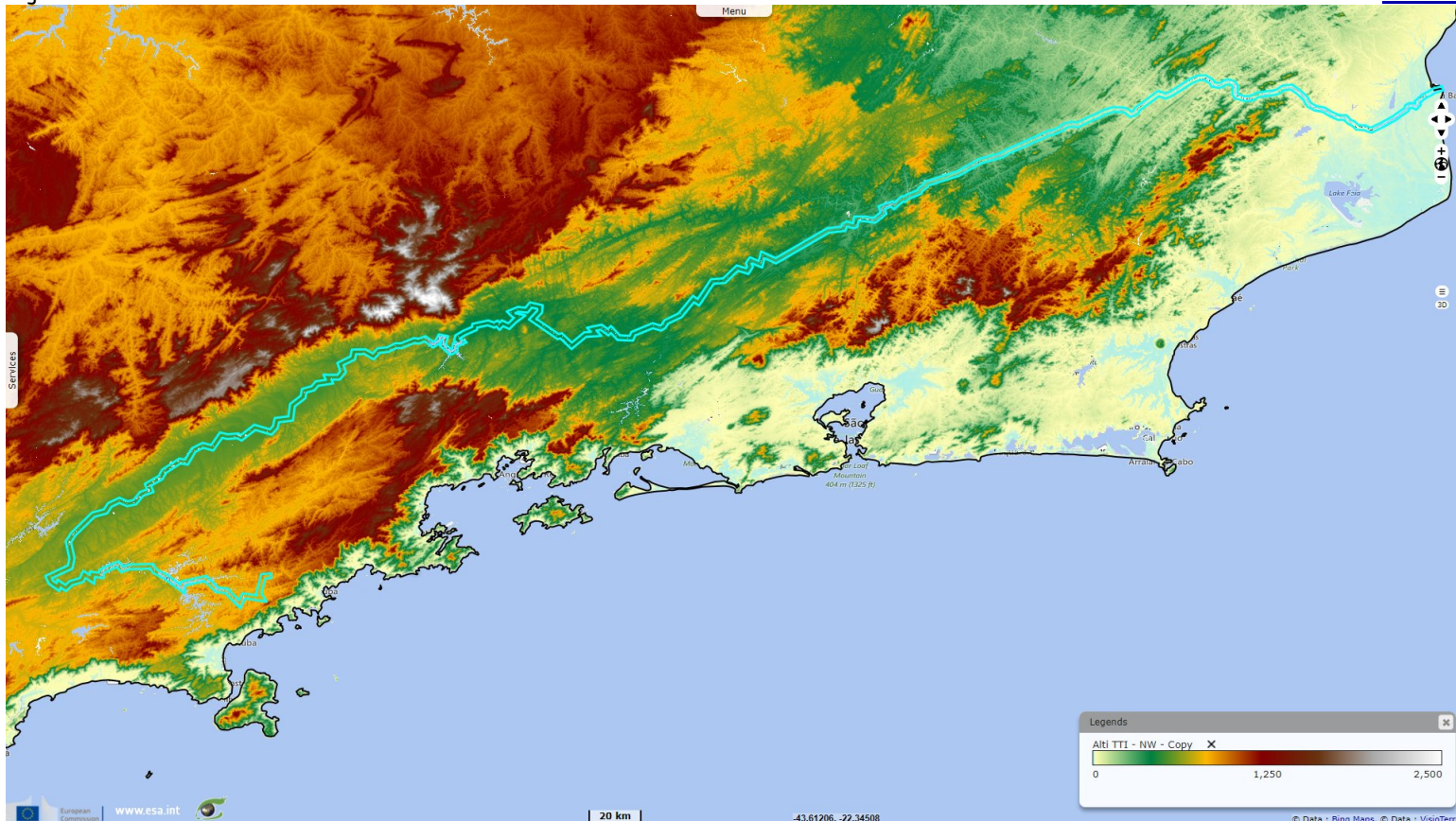


Fig. 2 - S1 (13-20.12.2021) - Its source is on the Brazilian plateau, just east of Sao Paulo but the highlands prevent it from running S-E.

[2D view](#)

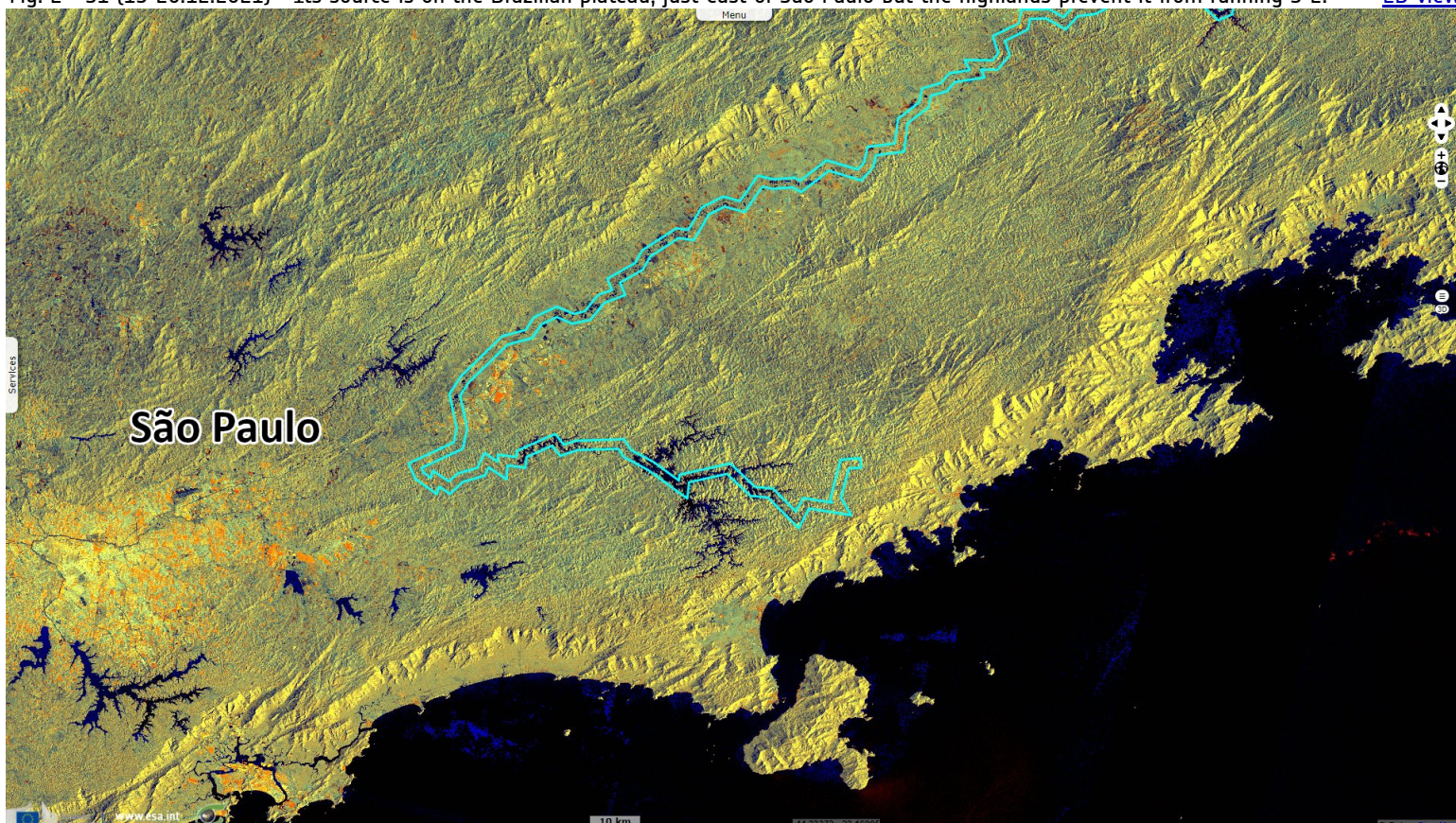


Fig. 3 - S2 (19 & 21.08.2021) - It continues, flowing north of Rio de Janeiro, with smaller dams installed on its middle section.

[2D view](#)



Fig. 4 - S2 (19 & 23.08.2021) - It flows north-east, locked between two mountain ranges for hundreds of kilometres until the sea.

[2D view](#)

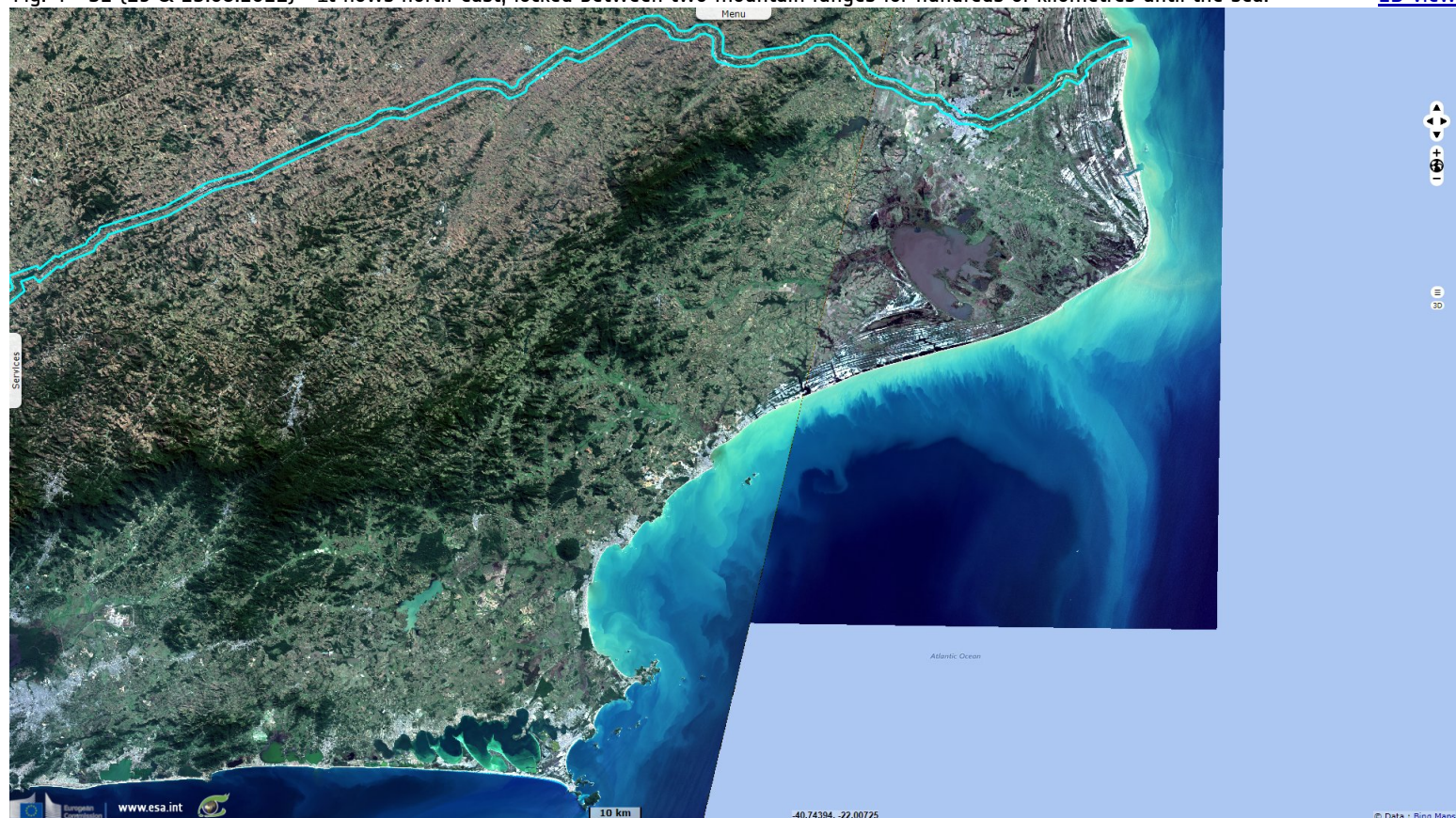
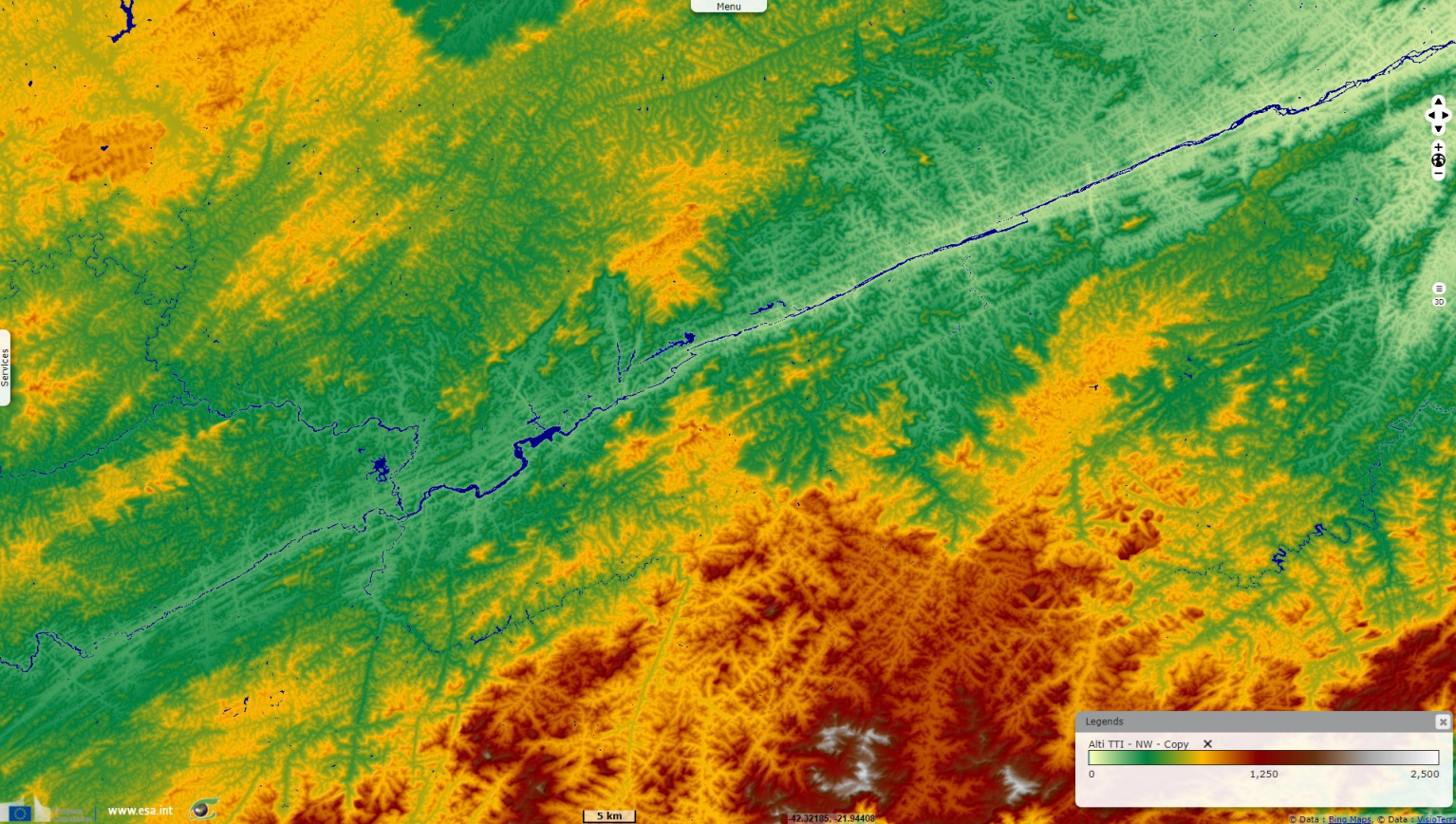
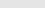
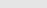
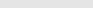




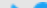






Fig. 5 - COP-DEM - Focus on the long straight path in its middle section between parallel ridges.

[2D view](#)



*The views expressed herein can in no way be taken to reflect the official opinion of the European Space Agency or the European Union.
Contains modified Copernicus Sentinel data 2022, processed by VisioTerra.*

More on European Commission space:							
More on ESA:				S-1 website	S-2 website	S-3 website	
More on Copernicus program:				SciHub portal	Cophub portal	Inthub portal	Colhub portal
More on VisioTerra:				Sentinel Vision Portal	Envisat+ERS portal	Swarm+GOCE portal	CryoSat portal