

Large landslide buries 53 workers in Alxa League open-pit coal mine, Inner Mongolia, China

Sentinel-2 MSI acquired on 18 February 2023 at 03:48:11 UTC

Sentinel-2 MSI acquired on 23 February 2023 at 03:47:49 UTC

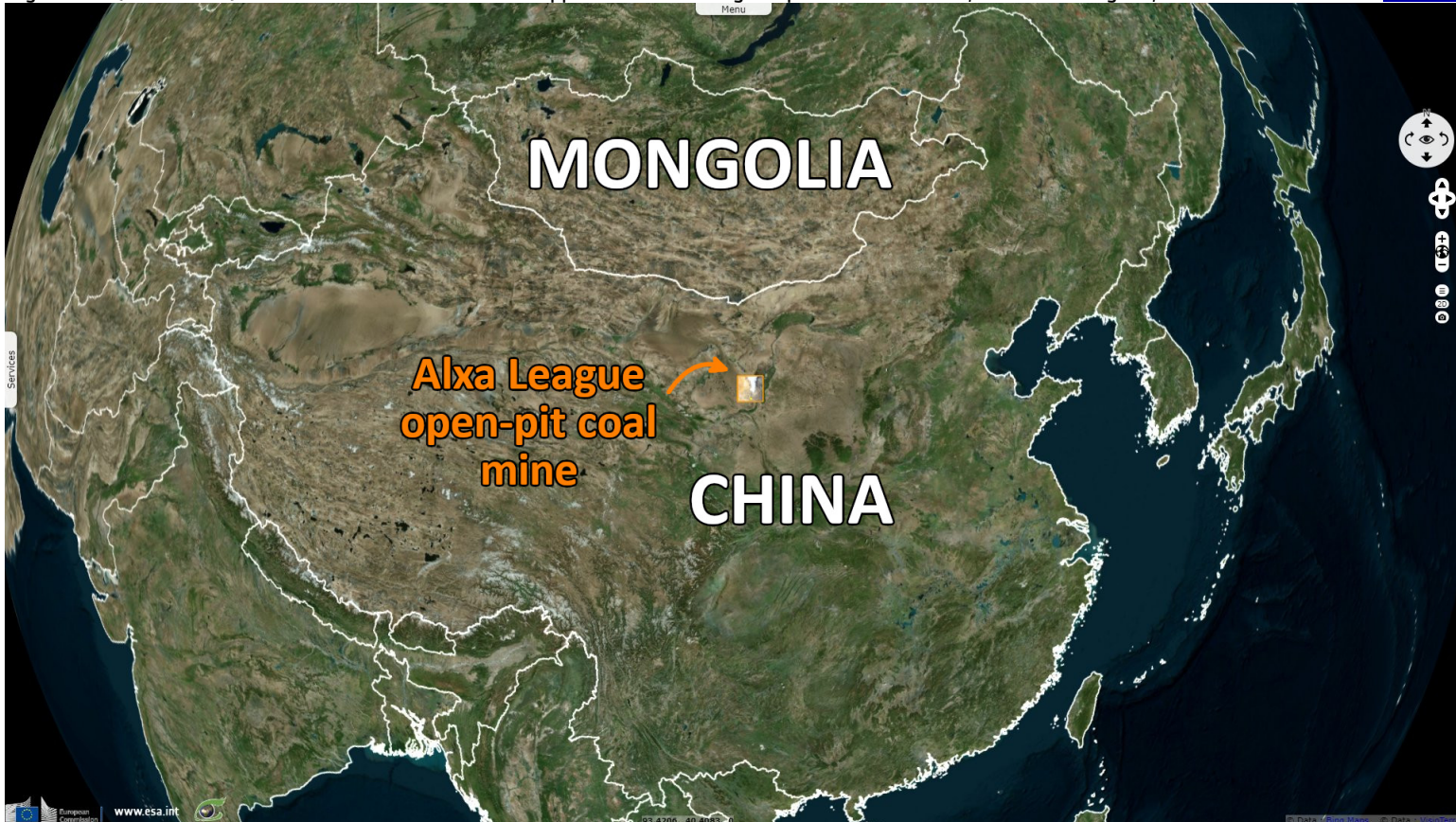
Author(s): Sentinel Vision team, VisioTerra, France - syp@visioterra.fr

Keyword(s): Land, natural resources, emergency, security, mine, energy, greenhouse gas, oil and gas, climate change, China

[2D Layerstack](#)

Fig. 1 - S2 (18.02.2023) - Two consecutive landslides happened in Alxa League open-cast coal mine, in Inner Mongolia, north of China.

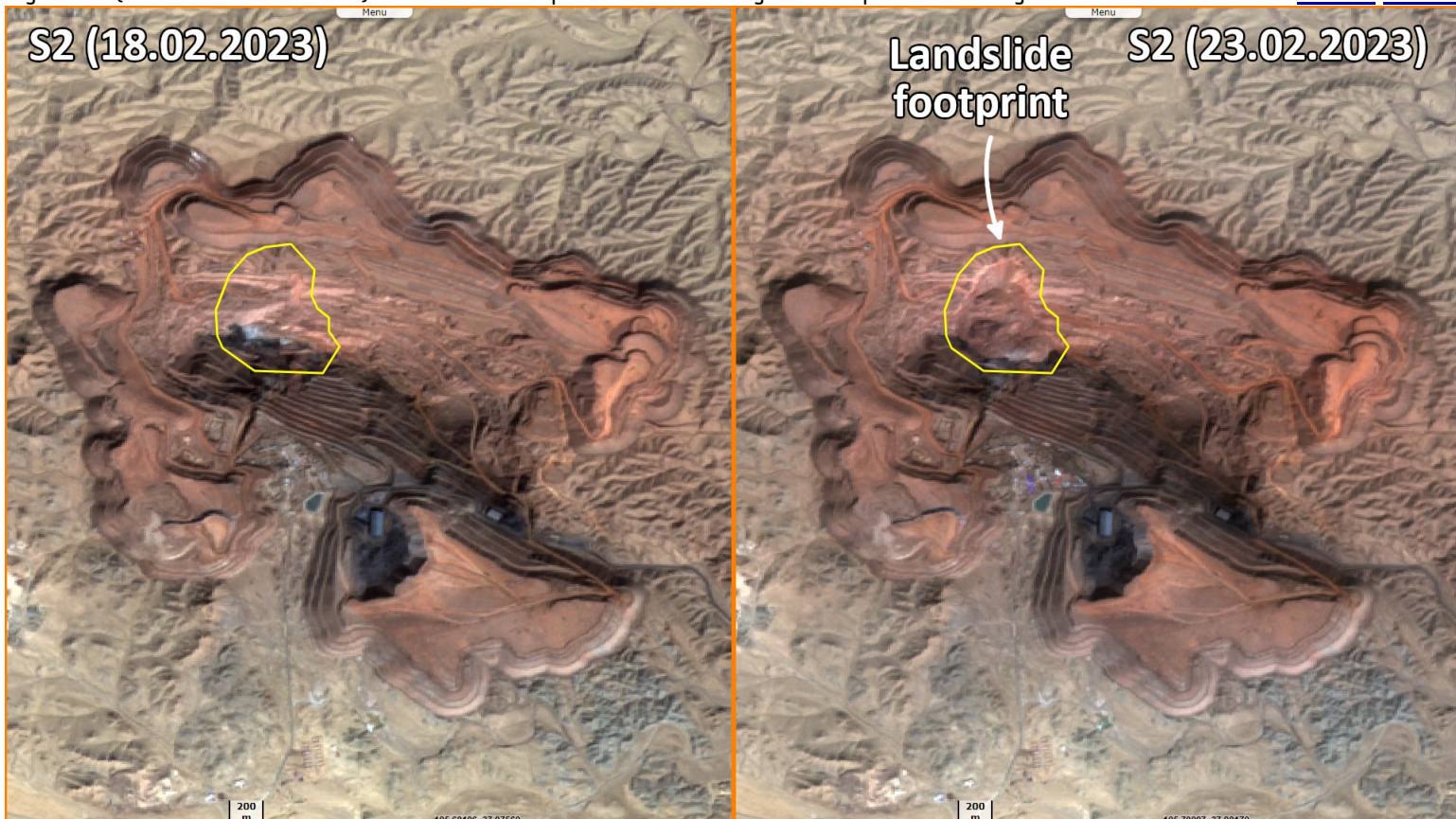
[2D view](#)



It buried 53 workers, the instability of the mine walls making search and rescue operations even more complicated.













Fig. 2 - S2 (18.02.2023 / 23.02.2023) - The northern slope of the west mining area collapsed from a height of 180 m.

[2D view](#) [2D view](#)



After the landslide, a mound of muck 500 m long, 200 m wide and 80 m thick was formed. The volume of this failure is estimated to be about 3.5 million cubic metres.

*The views expressed herein can in no way be taken to reflect the official opinion of the European Space Agency or the European Union.
Contains modified Copernicus Sentinel data 2023, processed by VisioTerra.*

| | | | | | | |
|------------------------------------|---|---|---|--|------------------------------------|---|
| More on European Commission space: |  |  |  | | | |
| More on ESA: |  |  |  | S-1 website | S-2 website | S-3 website |
| More on Copernicus program: |  |  |  | Scihub_portal | Cophub_portal | Inthub_portal Colhub_portal |
| More on VisioTerra: |  |  |  | Sentinel Vision Portal | Envisat+ERS_portal | Swarm+GOCE_portal CryoSat_portal |