

# Kyushu island flooding kills over 60 people, Japan

Sentinel-1 CSAR IW acquired on 22 June 2020 from 21:16:42 to 21:17:36 UTC

Sentinel-1 CSAR IW acquired on 10 July 2020 from 21:15:58 to 21:16:52 UTC

Author(s): Sentinel Vision team, VisioTerra, France - [svp@visioterra.fr](mailto:svp@visioterra.fr)

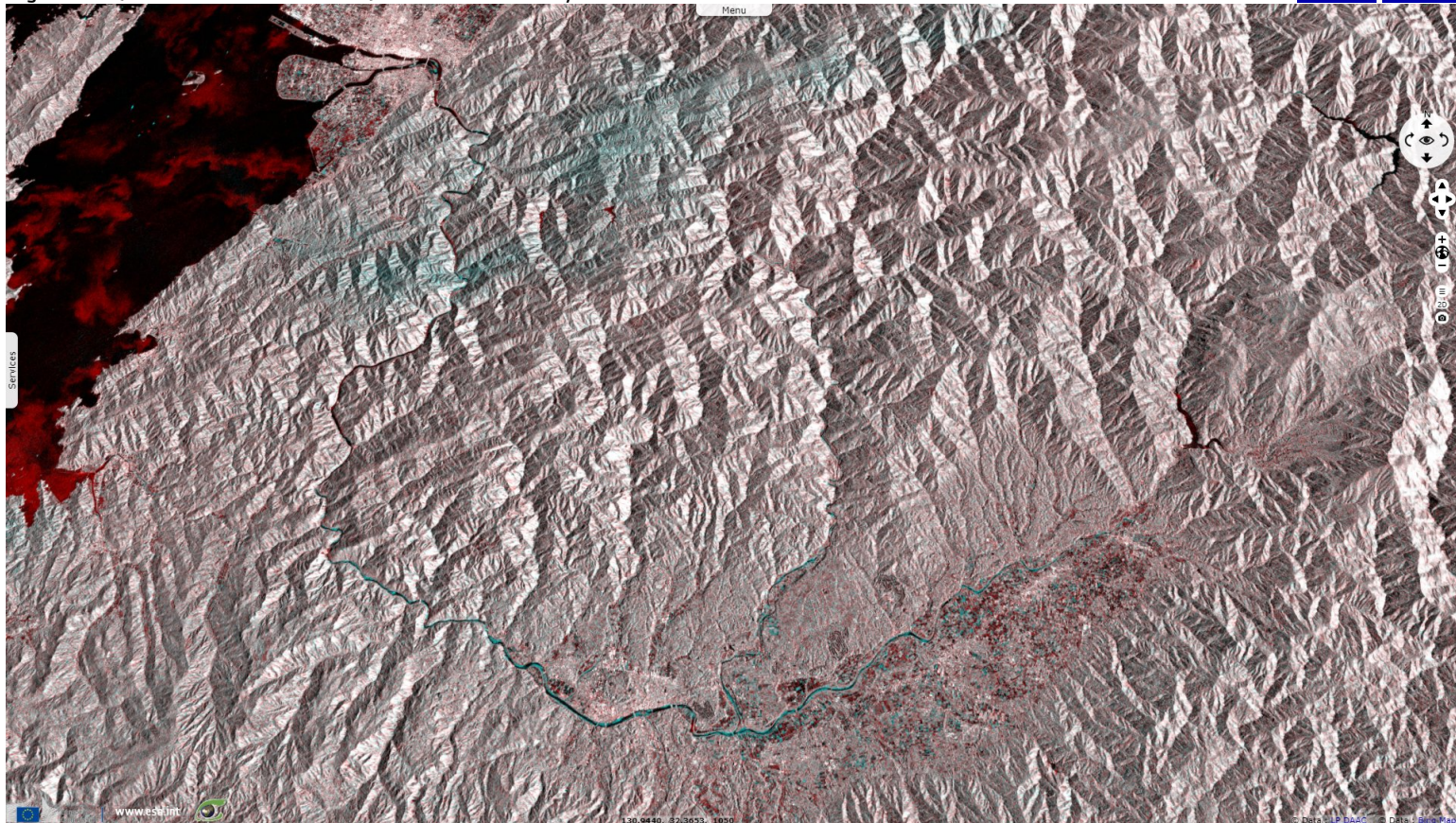
Keyword(s): Emergency, natural disaster, flooding, rainfalls, precipitations, river valley, Japan



[2D Layerstack](#)

Fig. 1 - S1 [22.06.2020 & 10.07.2020] - The flooded valley of Kuma river.

[2D view](#) [3D view](#)

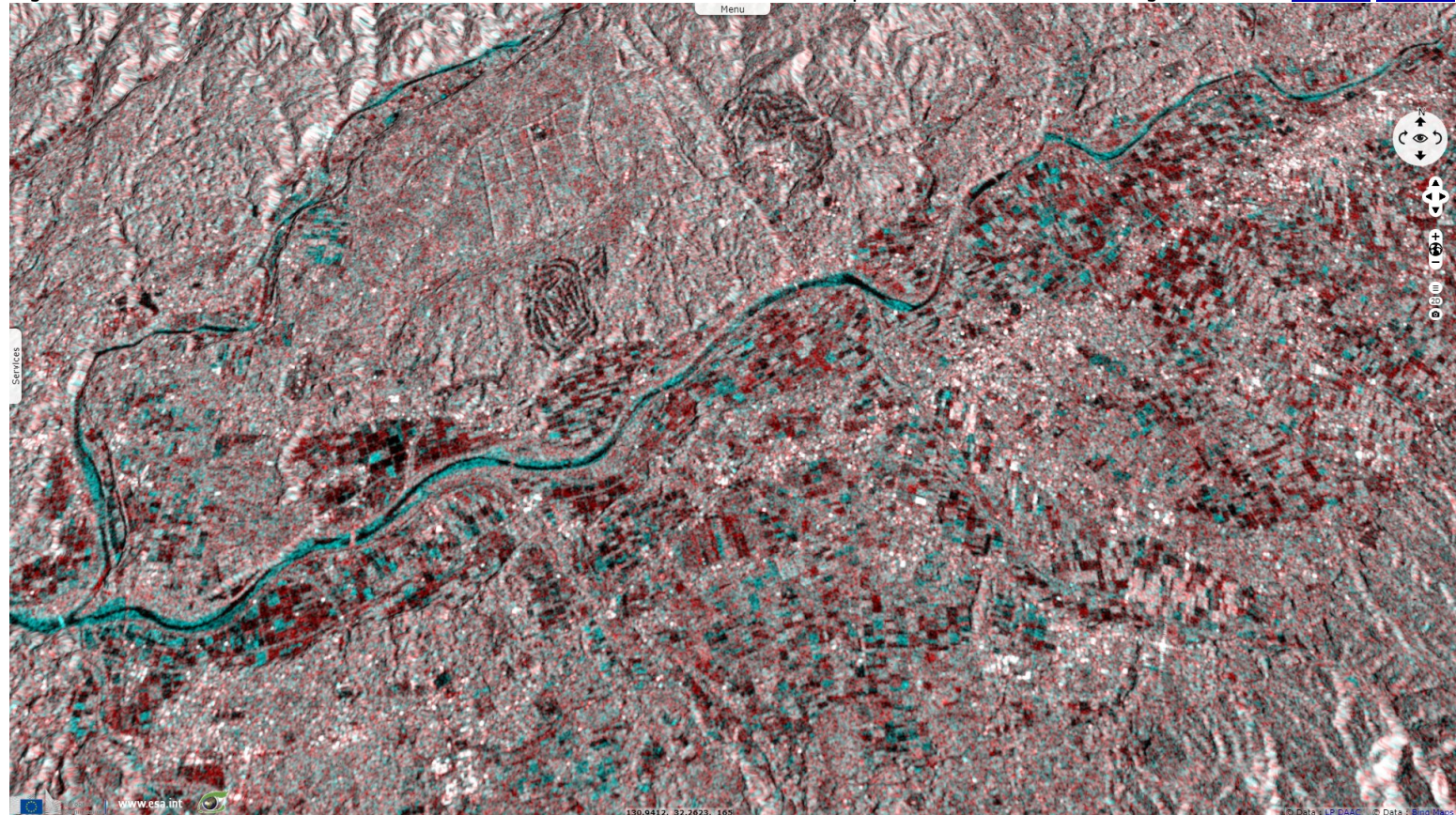


Record-breaking heavy rain hit the prefectures of Kumamoto and Kagoshima in the southern Japanese island of Kyushu on 4 July 2020 in the middle of the East Asian rainy season.



Fig. 2 - Flood in Nikichi. Authorities instructed over 75 000 residents to evacuate in the prefectures of Kumamoto & Kagoshima.

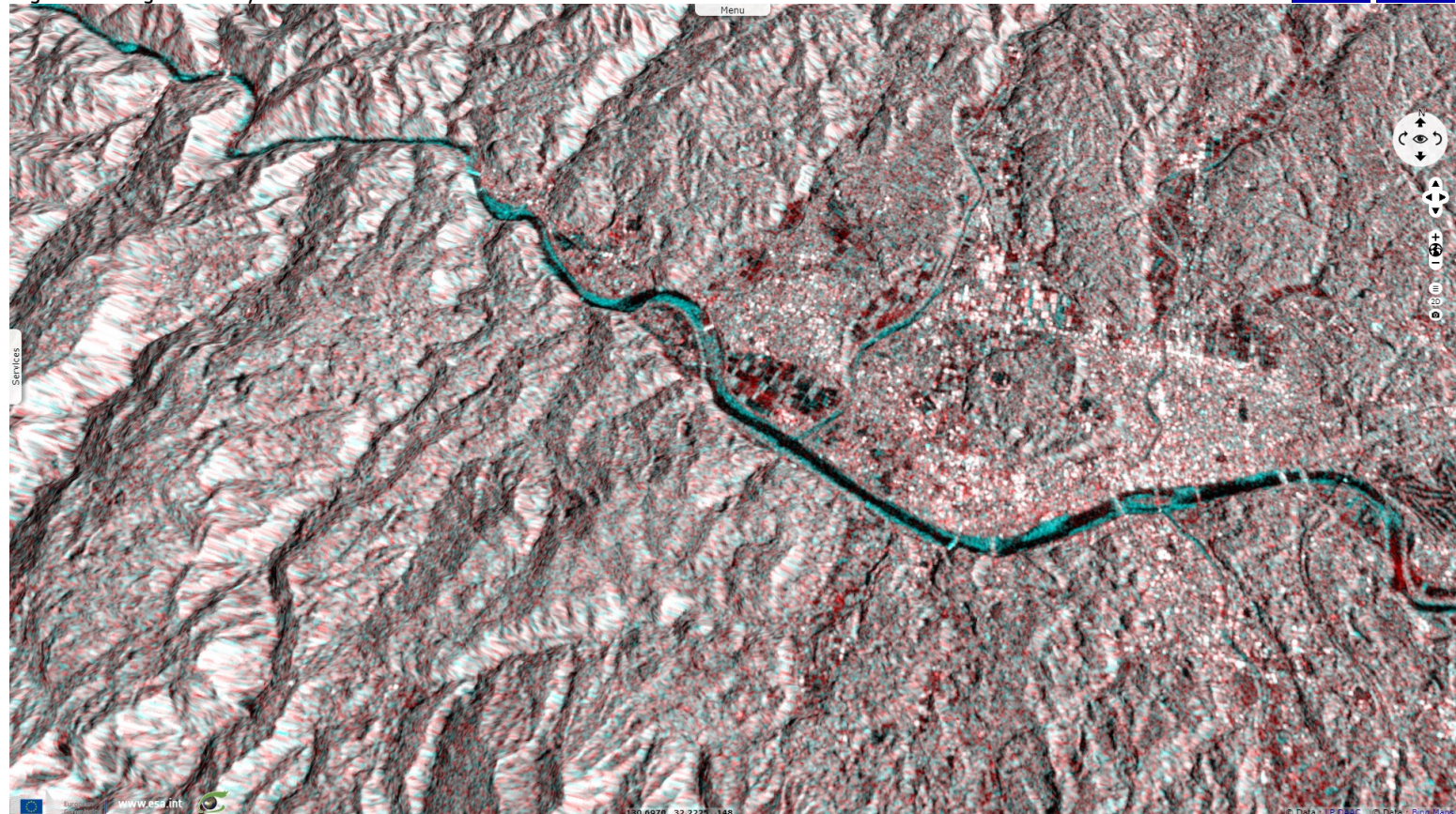
[2D view](#) [3D view](#)



The Japan Meteorological Agency stated the amount of rain was record-breaking for the region and was never seen before. The rate of rainfall exceeded 100 mm / hour.

Fig. 3 - Damages in Hitoyoshi.

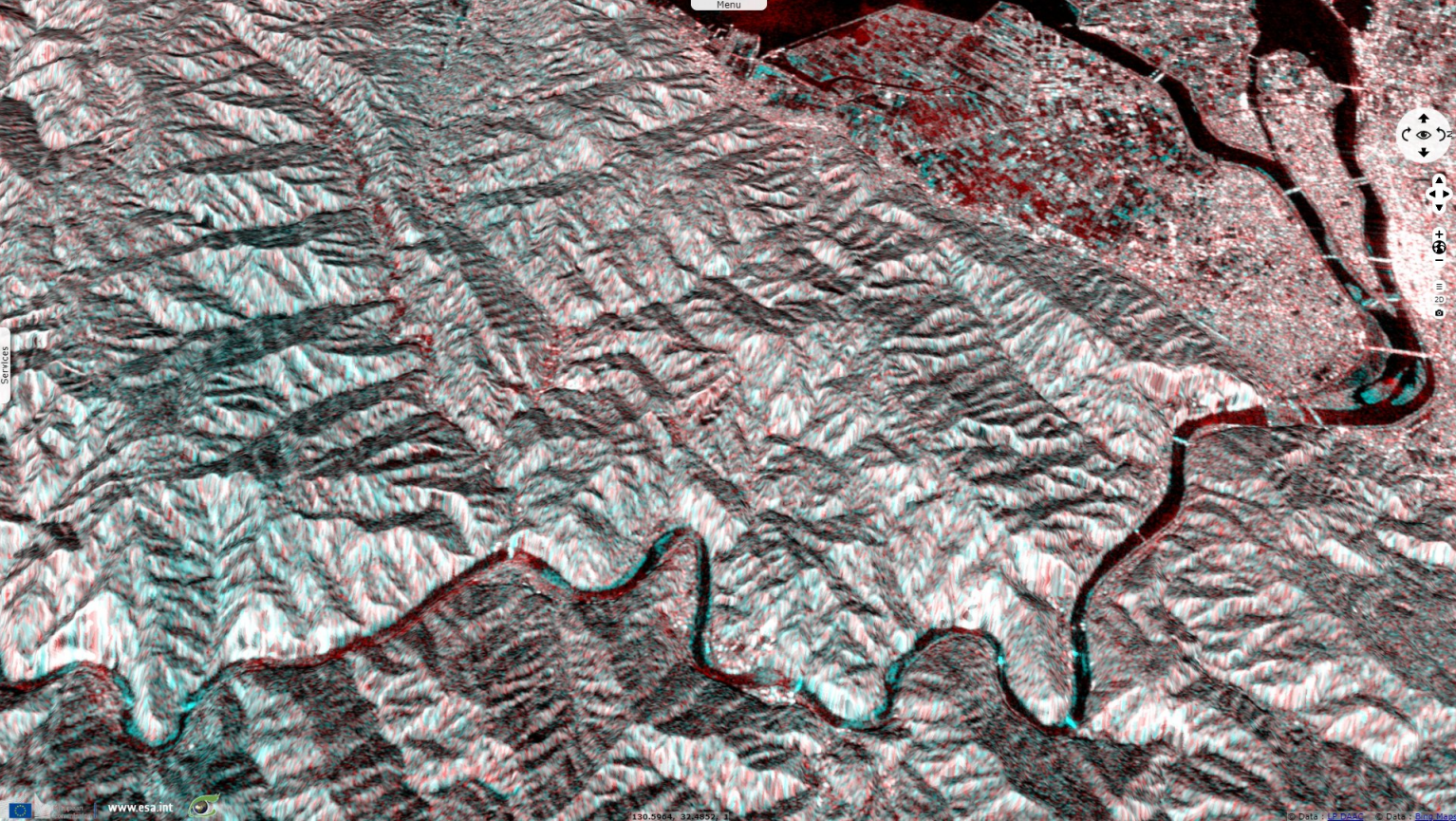
[2D view](#) [3D view](#)



At least 66 people have been killed, 6100 houses were estimated to be submerged, 11 bridges destroyed & 4700 buildings destroyed, damaged or flooded.















Fig. 4 - Kuma river has damaged or swept away several bridges the near the coast [cyan]. [2D view](#) [3D view](#)



80 000 Self-Defense troops, Coast Guard sailors, and firemen have been deployed in the rescue operation.

*The views expressed herein can in no way be taken to reflect the official opinion of the European Space Agency or the European Union.  
Contains modified Copernicus Sentinel data 2020, processed by VisioTerra.*

More on European Commission space:						
More on ESA:				<a href="#">S-1 website</a>	<a href="#">S-2 website</a>	<a href="#">S-3 website</a>
More on Copernicus program:				<a href="#">SciHub portal</a>	<a href="#">COPERNICUS portal</a>	<a href="#">Intrahub portal</a> <a href="#">ColHub portal</a>
More on VisioTerra:				<a href="#">Sentinel Vision Portal</a>	<a href="#">Envisat+ERS portal</a>	<a href="#">Swarm+GOCE portal</a> <a href="#">CryoSat portal</a>