

# Massive drop in Crozet Islands penguins colonies

Sentinel-1 CSAR IW acquired on 20 March 2016 at 15:34:54 UTC

Sentinel-1 CSAR IW acquired on 18 July 2016 at 15:35:00 UTC

Sentinel-2 MSI acquired on 23 February 2018 at 06:32:11 UTC

Sentinel-2 MSI acquired on 23 June 2018 at 06:32:11 UTC

Author(s): Sentinel Vision team, VisioTerra, France - [svp@visioterra.fr](mailto:svp@visioterra.fr)

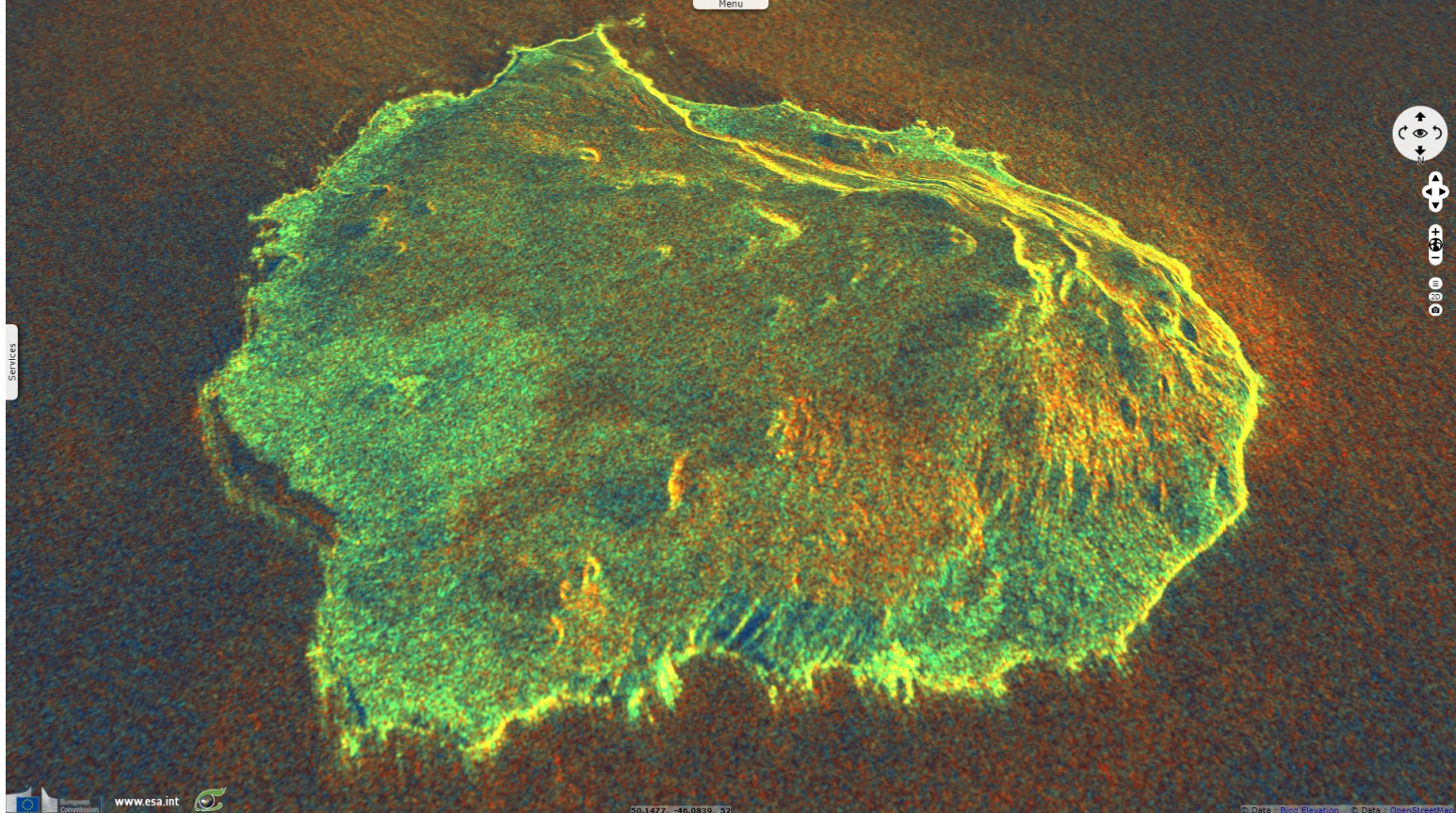
Keyword(s): Island, archipelago, coastal, biodiversity, Indian Ocean, France



[2D Layerstack](#)

Fig. 1 - S1 (20.03.2016) - vv,vh,ndi(vh,vv) - Île aux Cochons (Pig Island) in Crozet Islands, French Southern and Antarctic Lands.

[2D view](#) [3D view](#)



Lying just north of the small Île des Pingouins, Île aux Cochons used to host a 500000 couples strong royal penguins colony, World's largest.

Fig. 2 - S2 (23.02.2018) - 11,8,3 colour composite - East Island during the austral summer.

[3D view](#) [2D view](#)

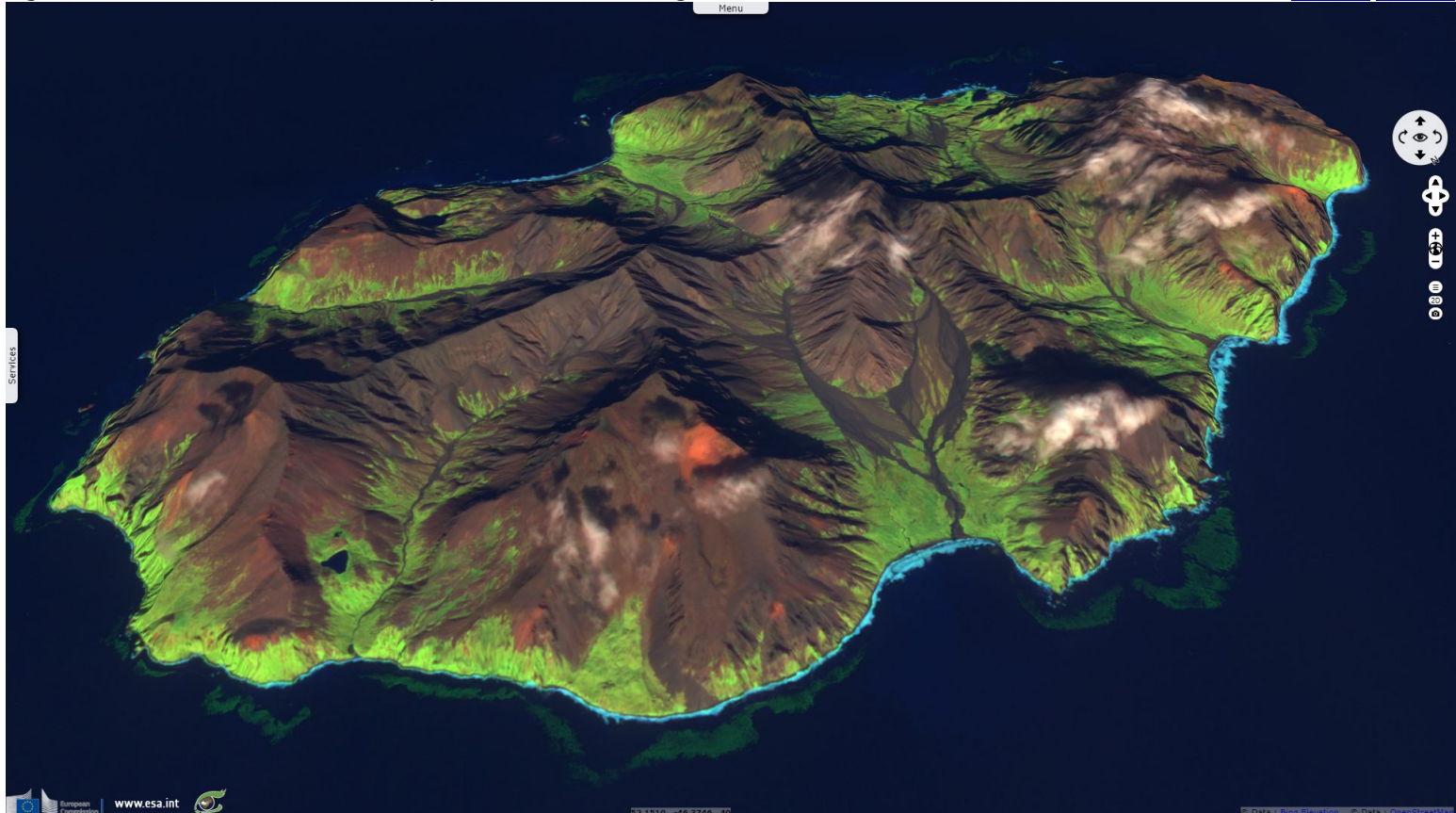


Fig. 3 - S1 (18.07.2016) - Large populations of seabirds, seals and penguins live on the remote, volcanic Crozet archipelago.

[3D view](#) [2D view](#)

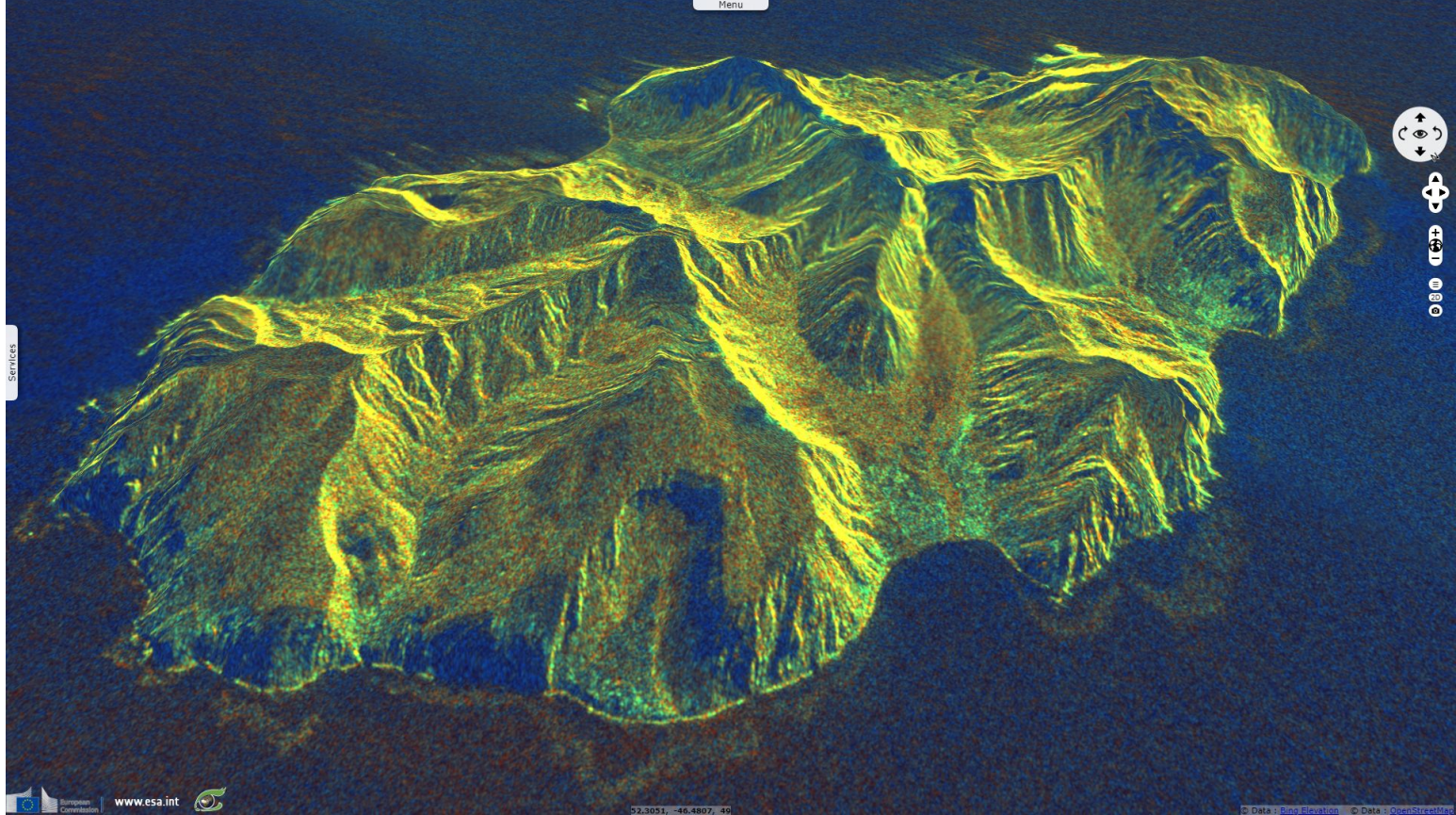


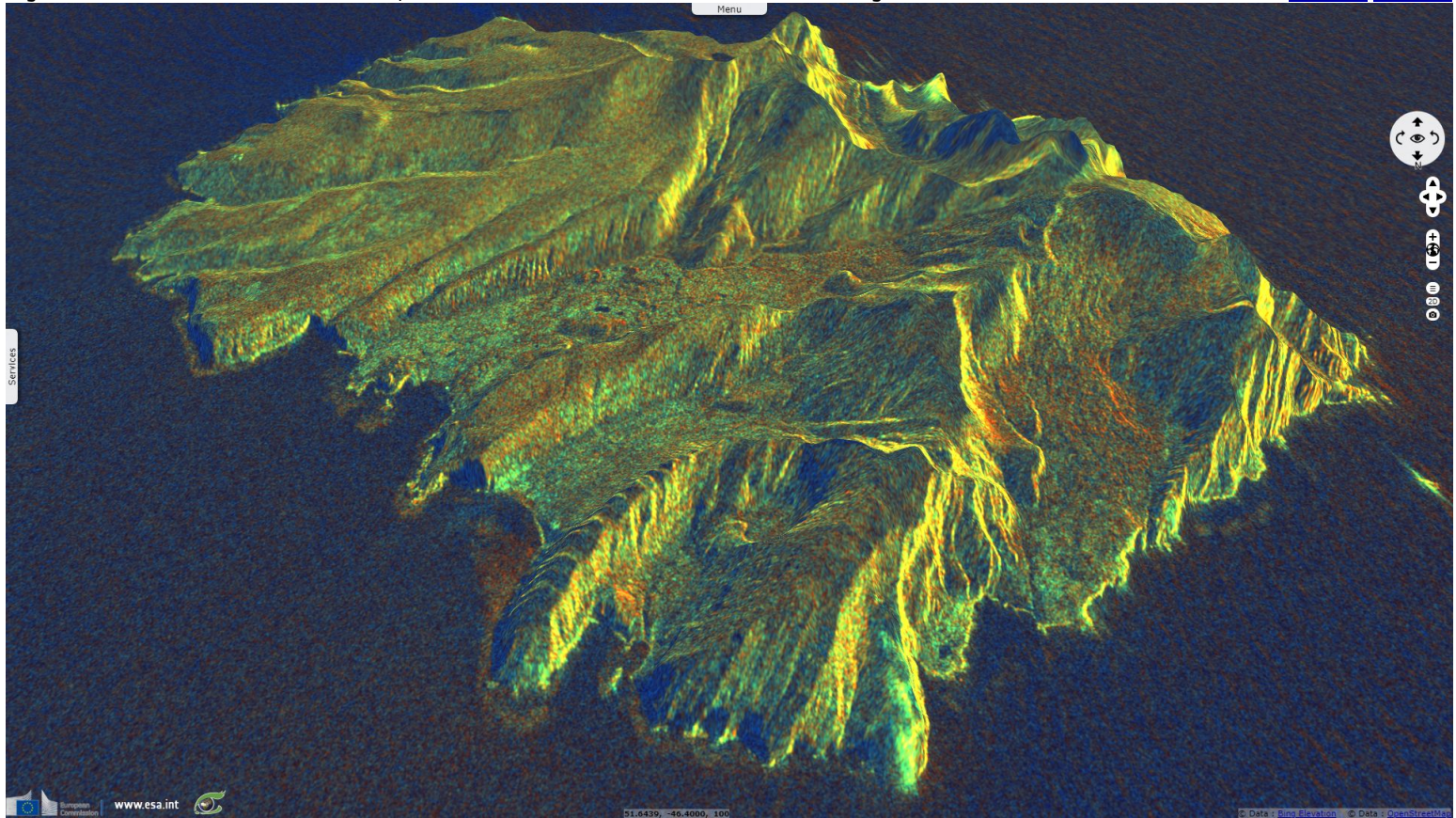
Fig. 4 - S2 (23.06.2018) - 11,8,3 colour composite, relief x2 - Possession Island, station Alfred Faure lies easternmost.

[3D view](#) [2D view](#)



Fig. 5 - S1 (18.07.2016) - Like its sisters, Possession Island is blanketed with snow during the austral winter.

[3D view](#) [2D view](#)



A study published in Antarctic Science writes Pig Island royal penguins colony saw its number drop from 500000 couples to 60000, a 88% decline. No cause has been identified yet. The archipelago is only inhabited by 20 to 30 scientist living in station Alfred Faure.

*The views expressed herein can in no way be taken to reflect the official opinion of the European Space Agency or the European Union.*

More on European Commission space:									
More on ESA:				<a href="#">S-1 website</a>	<a href="#">S-2 website</a>	<a href="#">S-3 website</a>			
More on Copernicus program:				<a href="#">SciHub portal</a>	<a href="#">CopHub portal</a>	<a href="#">Inthub portal</a>	<a href="#">Colhub portal</a>		
More on VisioTerra:				<a href="#">Sentinel Vision Portal</a>	<a href="#">Envisat+ERS portal</a>	<a href="#">Swarm+GOCE portal</a>	<a href="#">CryoSat portal</a>	<a href="#">Proba-V portal</a>	