

Sahara sand falls upon the Pyrenees snow

Sentinel-3 OLCI FR acquired on 05 February 2021 from 10:13:09 to 10:16:09 UTC

...
Sentinel-5P TROPOMI AER_AI acquired on 06 February 2021 from 11:30:43 to 13:10:43 UTC

Sentinel-2 MSI acquired on 07 February 2021 at 11:02:21 UTC

Author(s): Sentinel Vision team, VisioTerra, France - svp@visioterra.fr

Keyword(s): Atmosphere, wind, snow, mountain range, sand, dust, Sahara, Pyrenees, Spain, France, Andorra

[2D Layerstack](#)

Fig. 1 - S5P TROPOMi (06.02.2021) - Aerosol - Blown by strong winds, sand & dust has traveled fast from the Sahara to the European continent. [2D view](#) [3D animation](#)

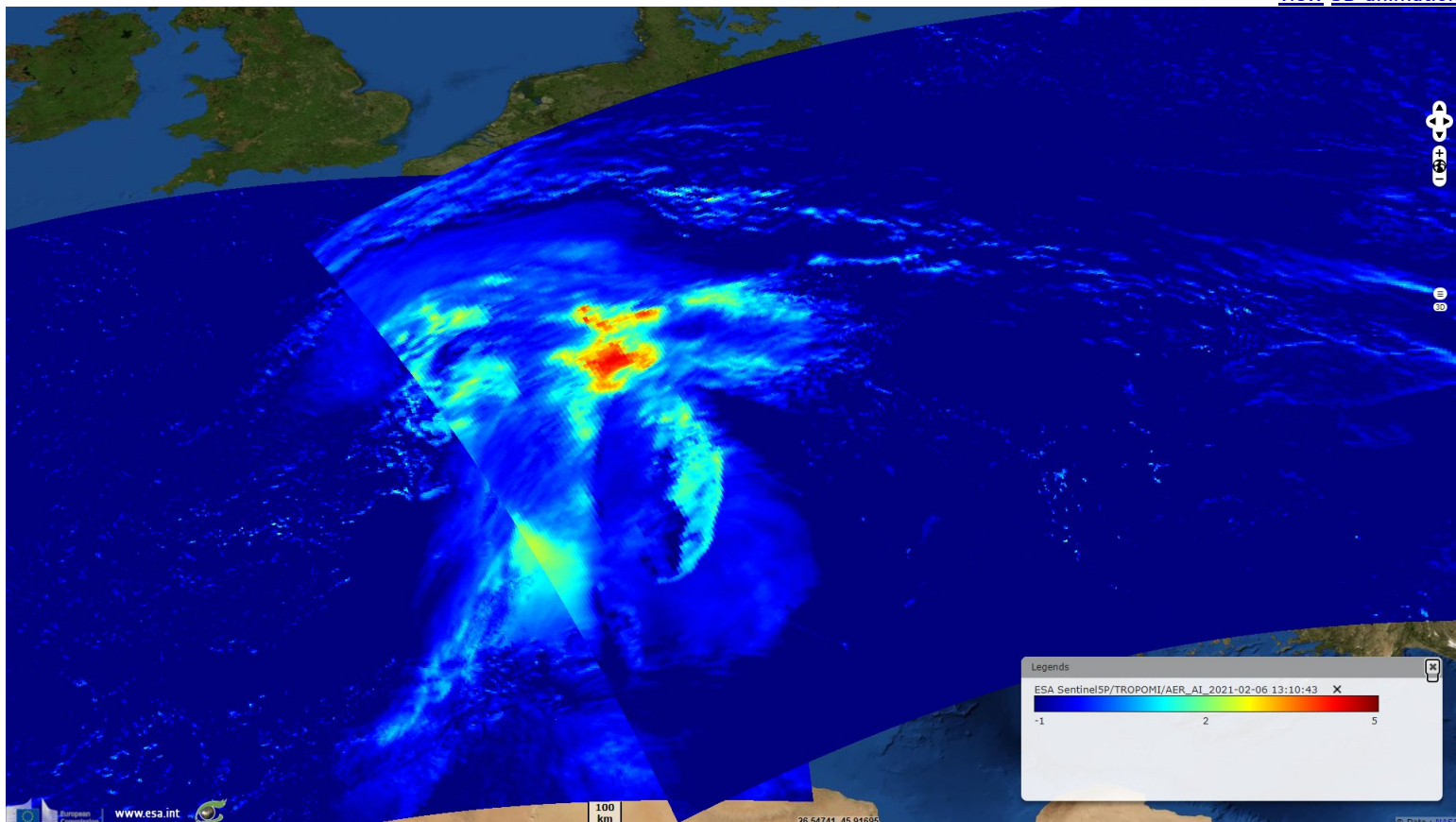


Fig. 2 - S3 OLCI (06.02.2021) - Spain, south of France, Switzerland and Italy have seen the sky turn yellow to orange during the day. [2D view](#)

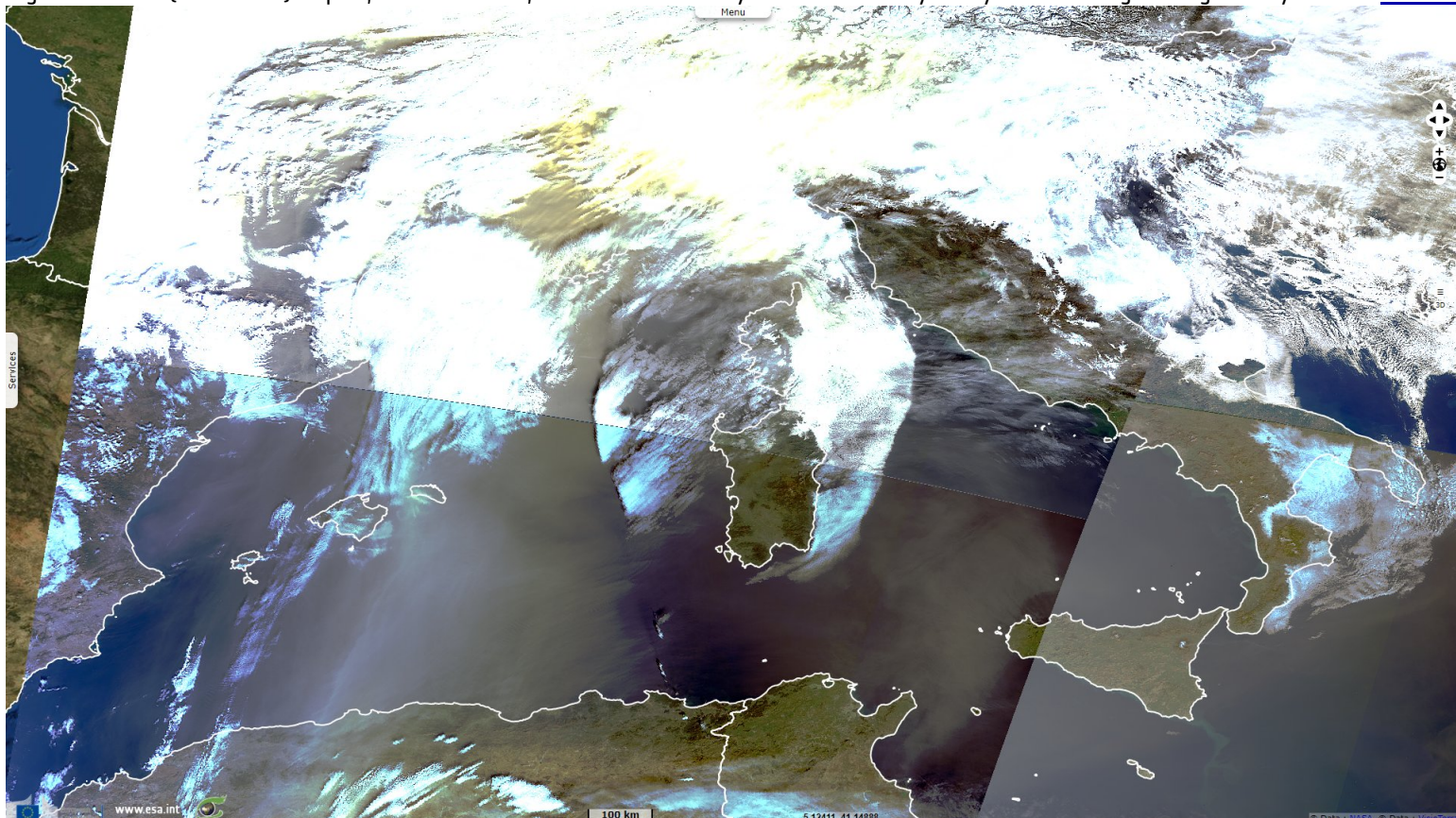


Fig. 3 - S2 (07.02.2021) - The snow took beige to orange tones in the western Pyrenees.

[2D view](#)

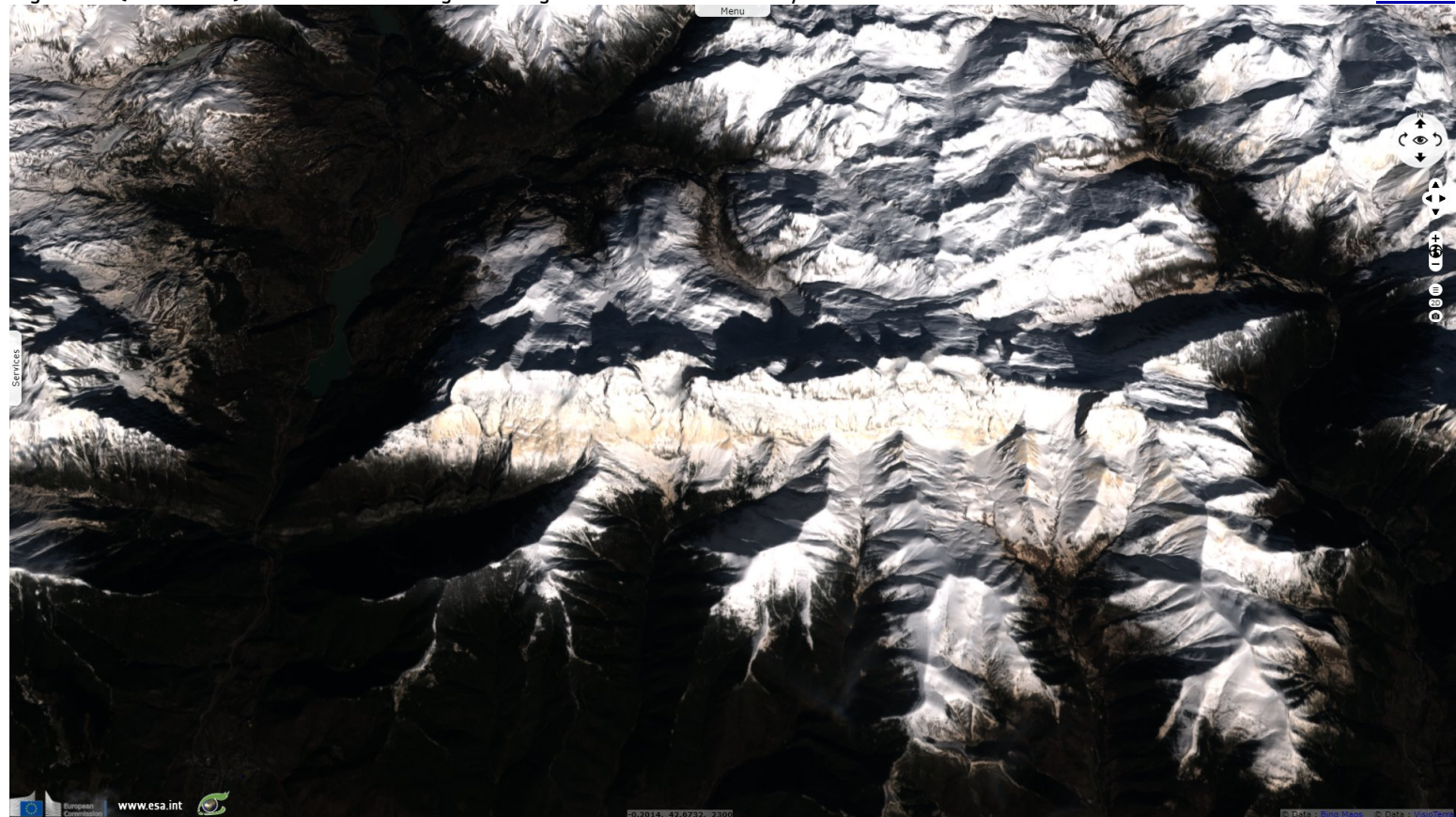


Fig. 4 - S2 (11.02.2021) - Further east around Andorra, it is mostly south and west facing facets and ridges that have been colored.

[2D view](#)

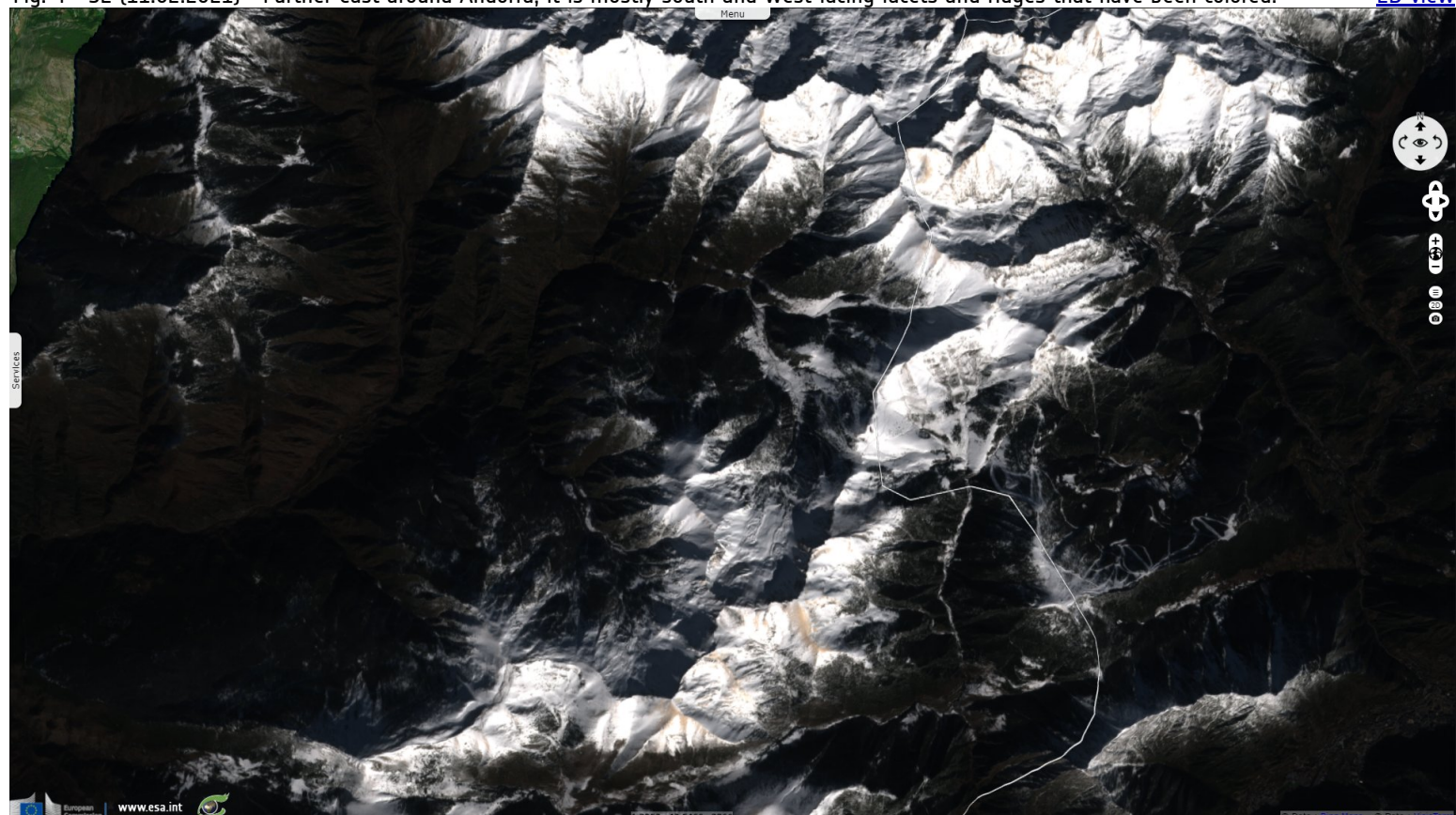


Fig. 5 - S2 (11.02.2021) - By increasing the albedo the the snow it deposits on, this dust causes a faster melt of the snow layer.

[2D view](#)

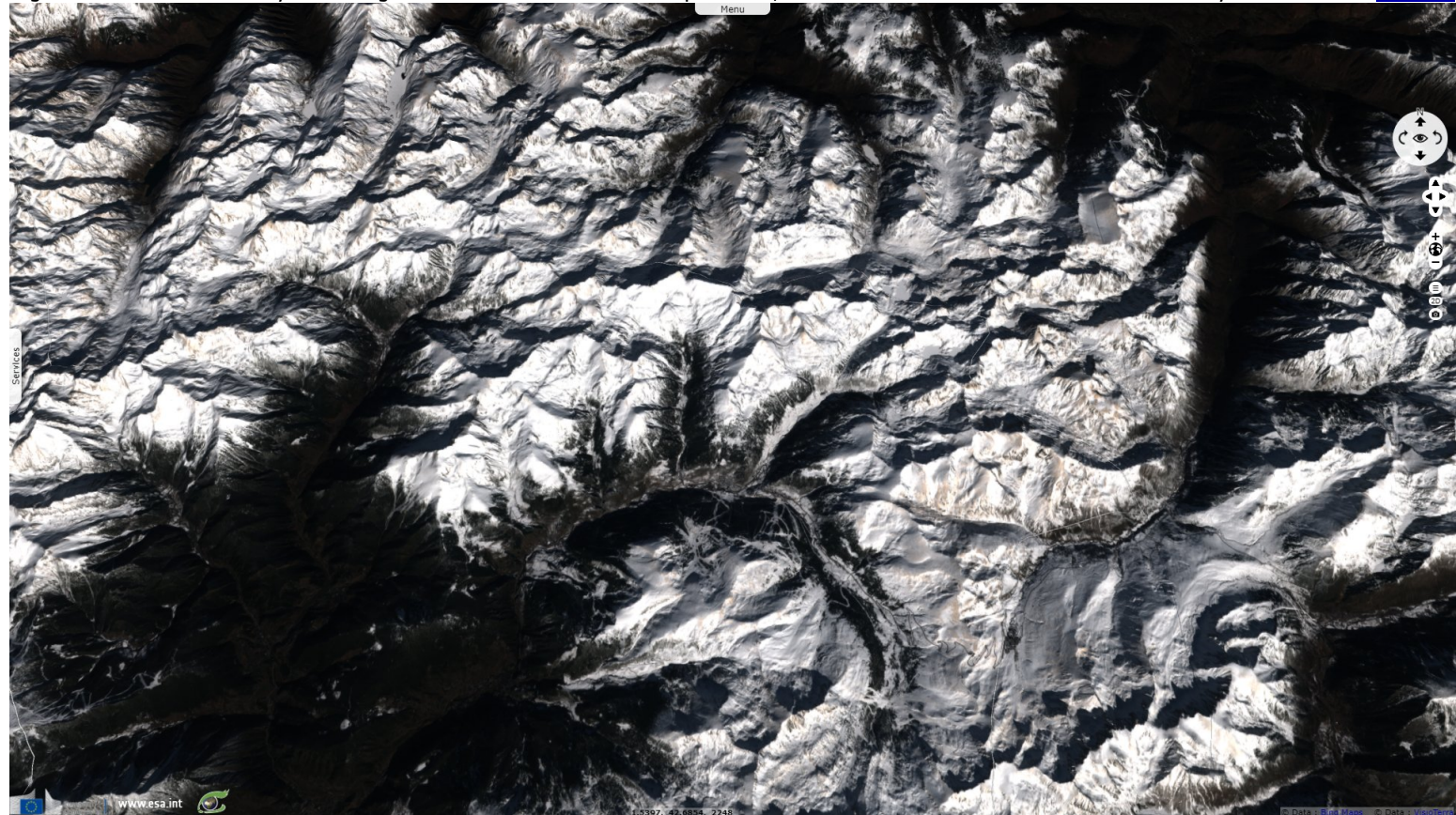
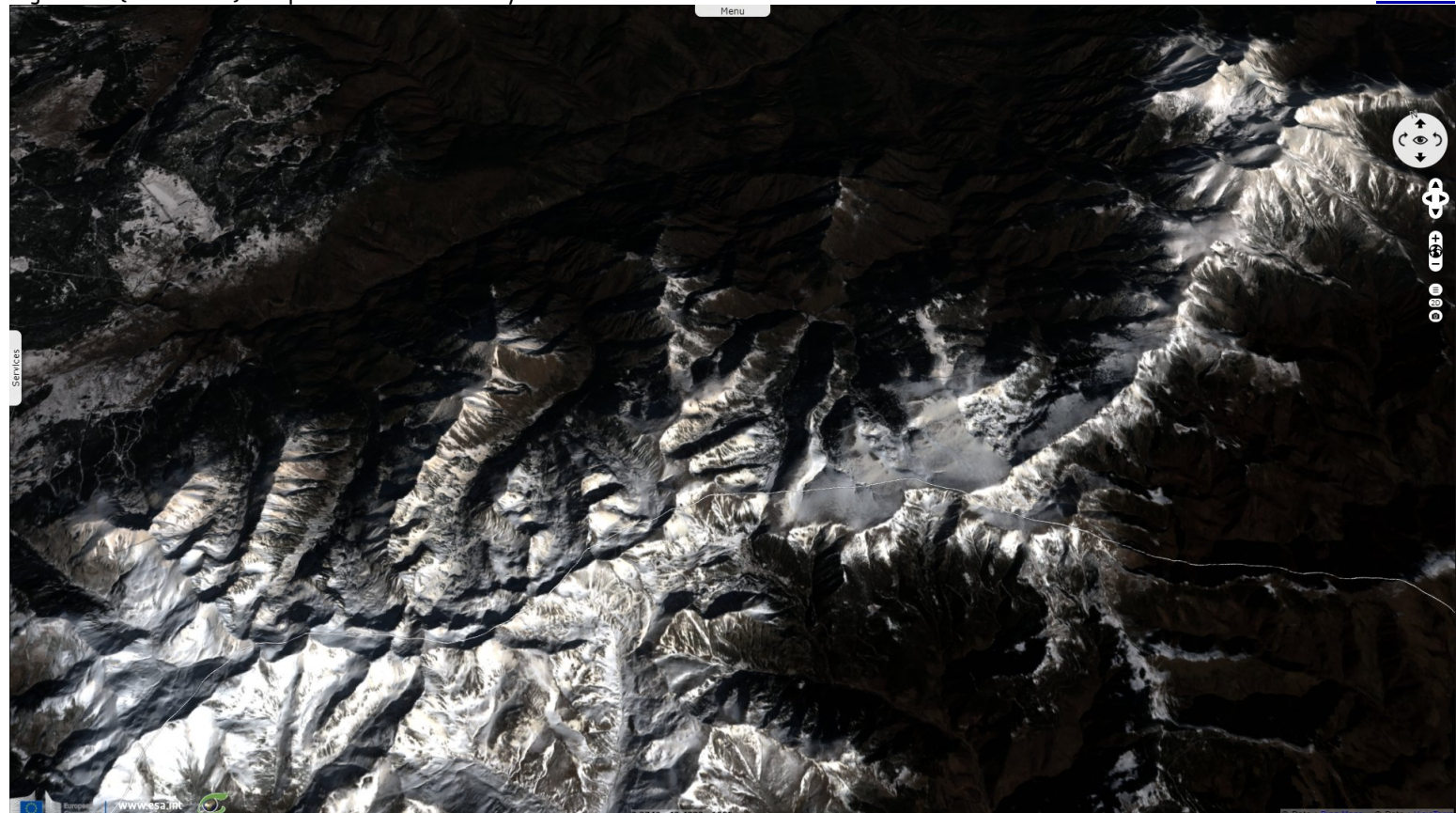


Fig. 6 - S2 (11.02.2021) - Deposits in the eastern Pyrenees.

[2D view](#)



*The views expressed herein can in no way be taken to reflect the official opinion of the European Space Agency or the European Union.
Contains modified Copernicus Sentinel data 2021, processed by VisioTerra.*

More on European Commission space:						
More on ESA:				S-1 website	S-2 website	S-3 website
More on Copernicus program:				SciHub portal	Cophub portal	Inthub portal
More on VisioTerra:				Sentinel Vision Portal	Envisat+ERS portal	Swarm+GOCE portal
					CryoSat portal	