

Shanghai under lockdown since 01 April 2022, China

Sentinel-1 CSAR IW acquired on 09 March 2022 from 09:54:59 to 09:55:00 UTC

...

Sentinel-5P TROPOMI NO₂ acquired on 01 April 2022 at 04:52:18 UTC

Sentinel-1 CSAR IW acquired on 14 April 2022 at 09:55:00 UTC

Sentinel-5P TROPOMI NO₂ acquired on 11 May 2022 from 04:31:20 to 06:16:20 UTC

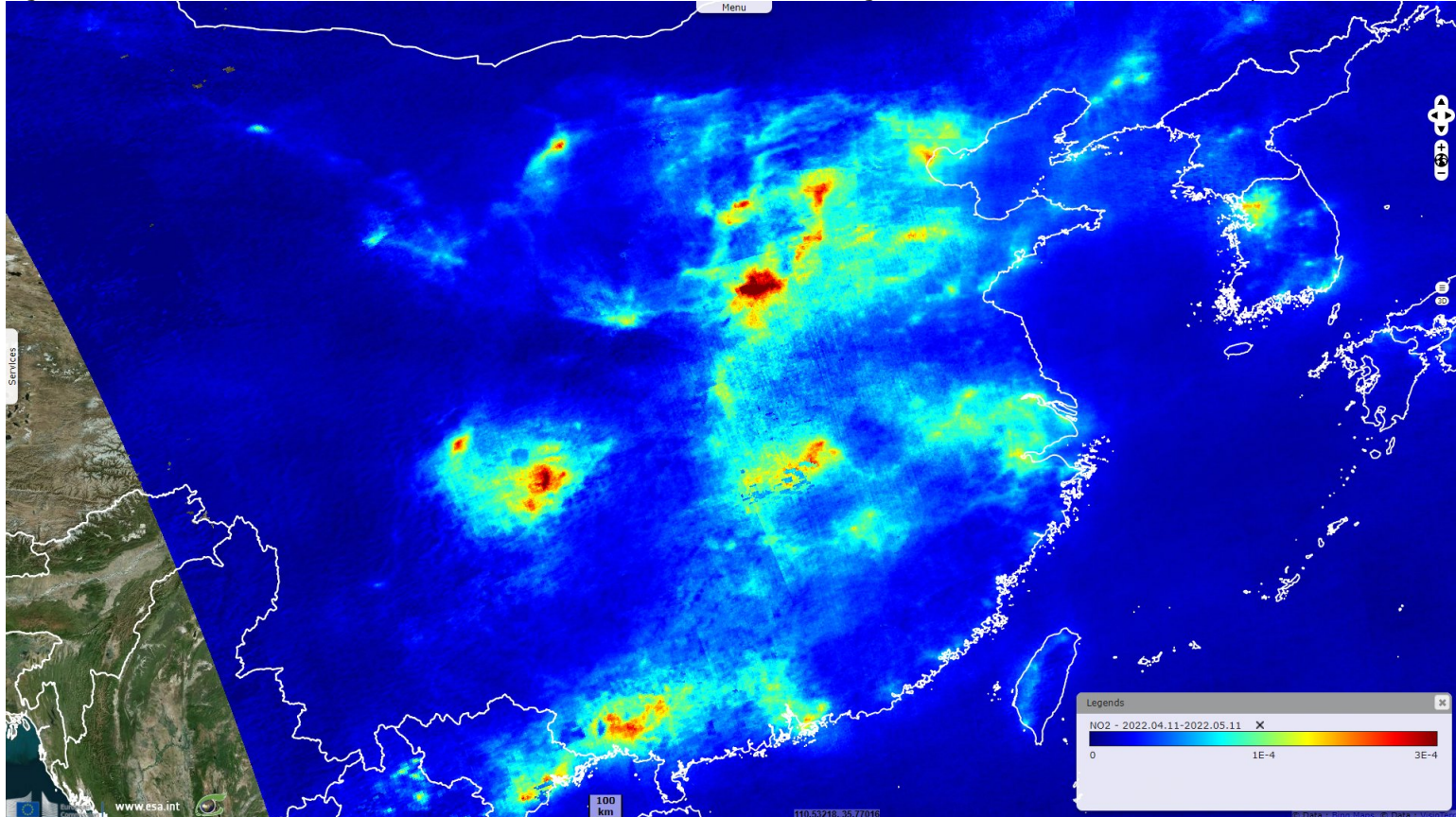
Author(s): Sentinel Vision team, VisioTerra, France - svp@visioterra.fr

Keyword(s): Pollution, atmosphere, marine traffic, infrastructure, health, China



[2D Layerstack](#)

Fig. 1 - S5P TROPOMI (11.04.2022-11.05.2022) - Due to a rise in COVID-19 cases, Shanghai is under total lockdown since 1st April 2022. [2D view](#)



The average NO₂ concentration has been computed above Shanghai during one month of total lockdown in the city (11 April to 11 May 2022). It shows lower values above Shanghai compared to other, smaller, Chinese megalopolis. This lower urban pollution can be attributed to a lockdown-related reduction of NO₂ emissions.

Fig. 2 - S1 (09.03.2022) - View of Shanghai before the lockdown, its port area was busy and many ships were visible outside the port. [2D view](#)

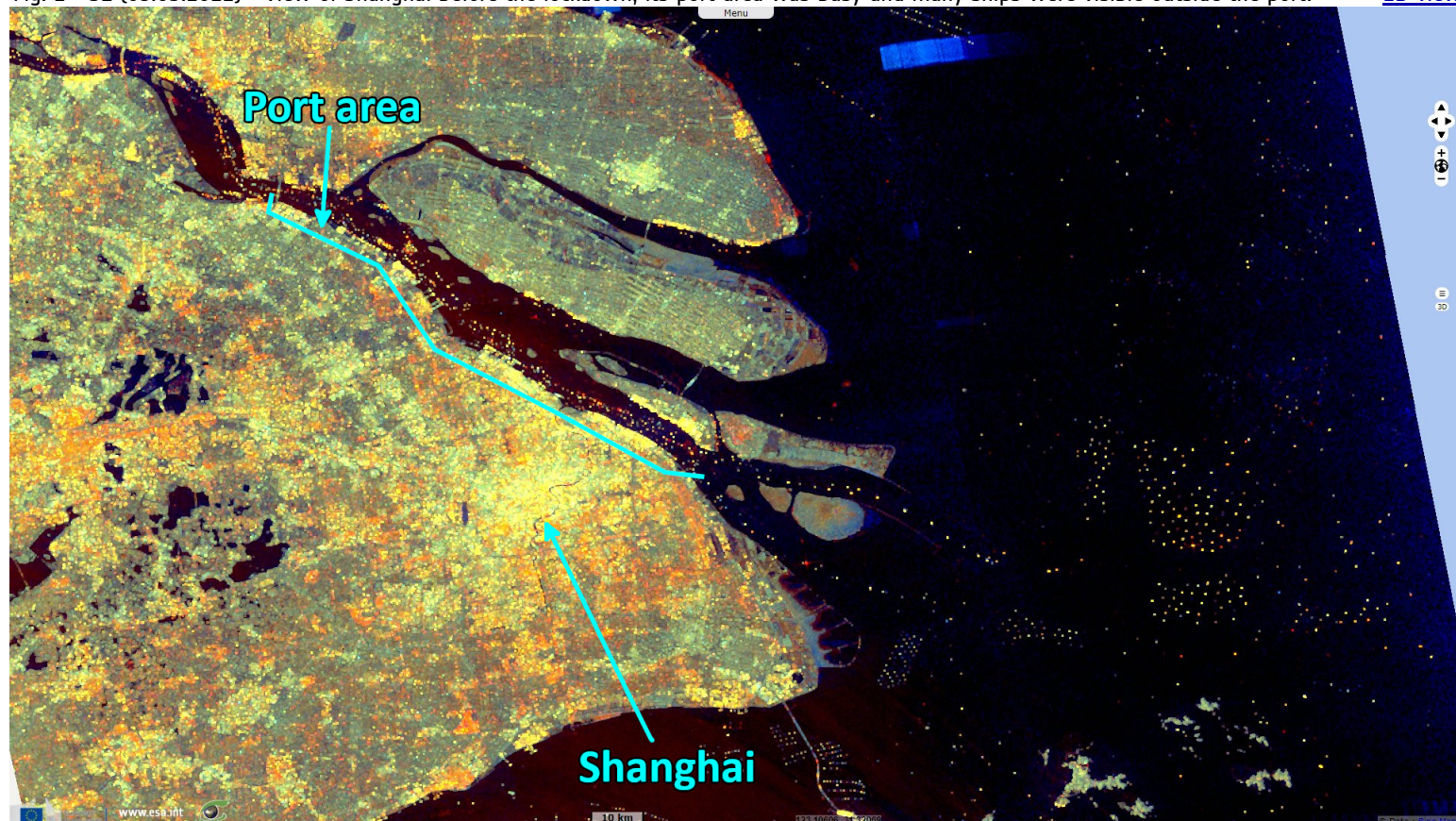
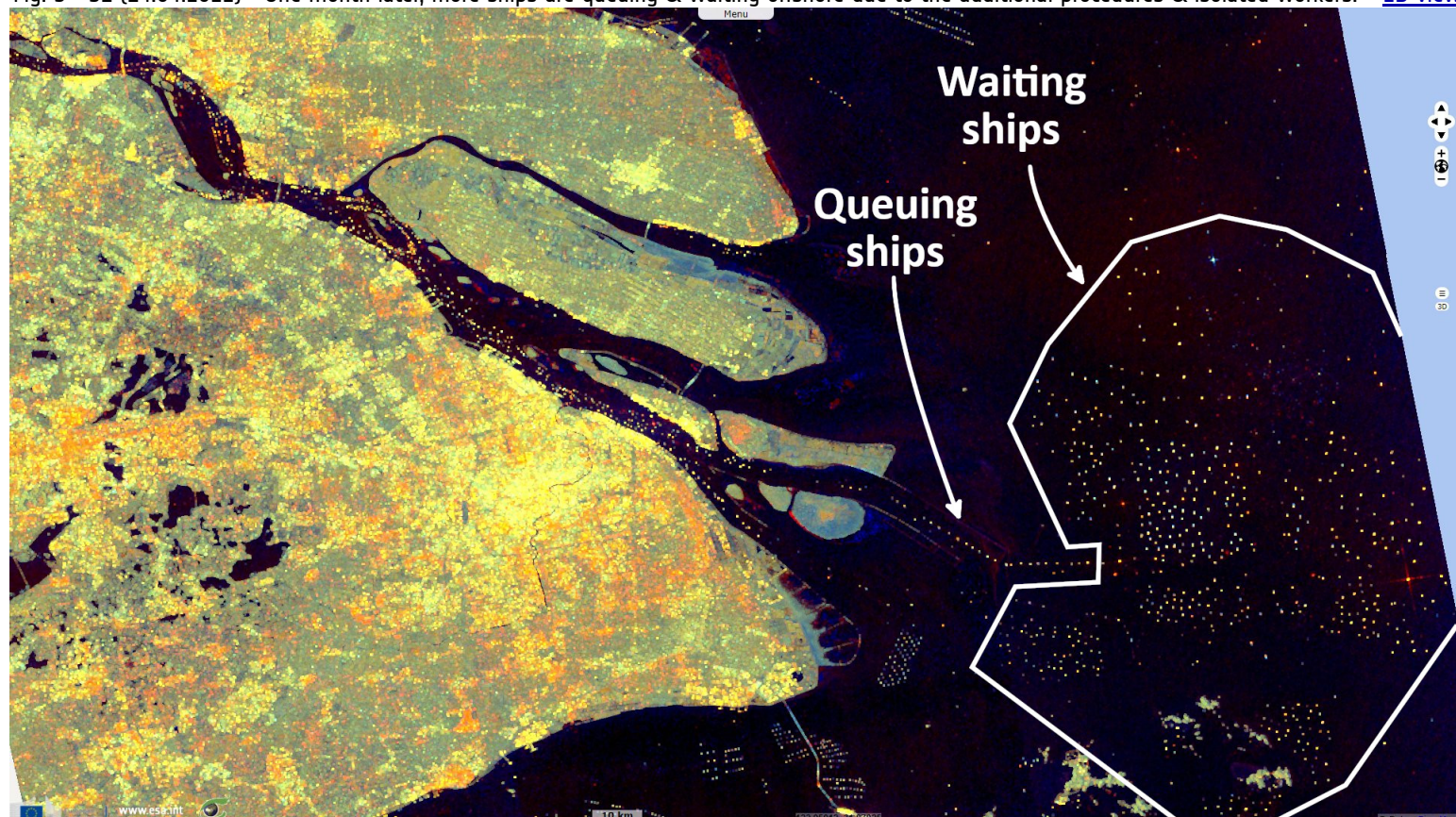
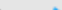
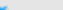

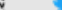
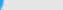




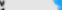
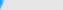



Fig. 3 - S1 (14.04.2022) - One month later, more ships are queuing & waiting offshore due to the additional procedures & isolated workers. [2D view](#)



*The views expressed herein can in no way be taken to reflect the official opinion of the European Space Agency or the European Union.
Contains modified Copernicus Sentinel data 2022, processed by VisioTerra.*

More on European Commission space:							
More on ESA:				S-1 website	S-2 website	S-3 website	
More on Copernicus program:				Scihub portal	Cophub portal	Inthub portal	Colhub portal
More on VisioTerra:				Sentinel Vision Portal	Envisat+ERS portal	Swarm+GOCE portal	CryoSat portal