

Geologic lacework in a pre-Atlas valley, Morocco

Sentinel-2 MSI acquired on 17 April 2018 at 11:06:51 UTC

Sentinel-2 MSI acquired on 27 April 2019 at 11:06:29 UTC

Sentinel-2 MSI acquired on 01 May 2020 at 11:06:19 UTC

Author(s): Sentinel Vision team, VisioTerra, France - svp@visioterra.fr

Keyword(s): Land, mountain range, geology, river, gorge, erosion, Morocco



[2D Layerstack](#)

Fig. 1 - S2 (01.05.2020) - This valley is located in the centre of the region of Béni Mellal-Khénifra region of Morocco.

[2D view](#)

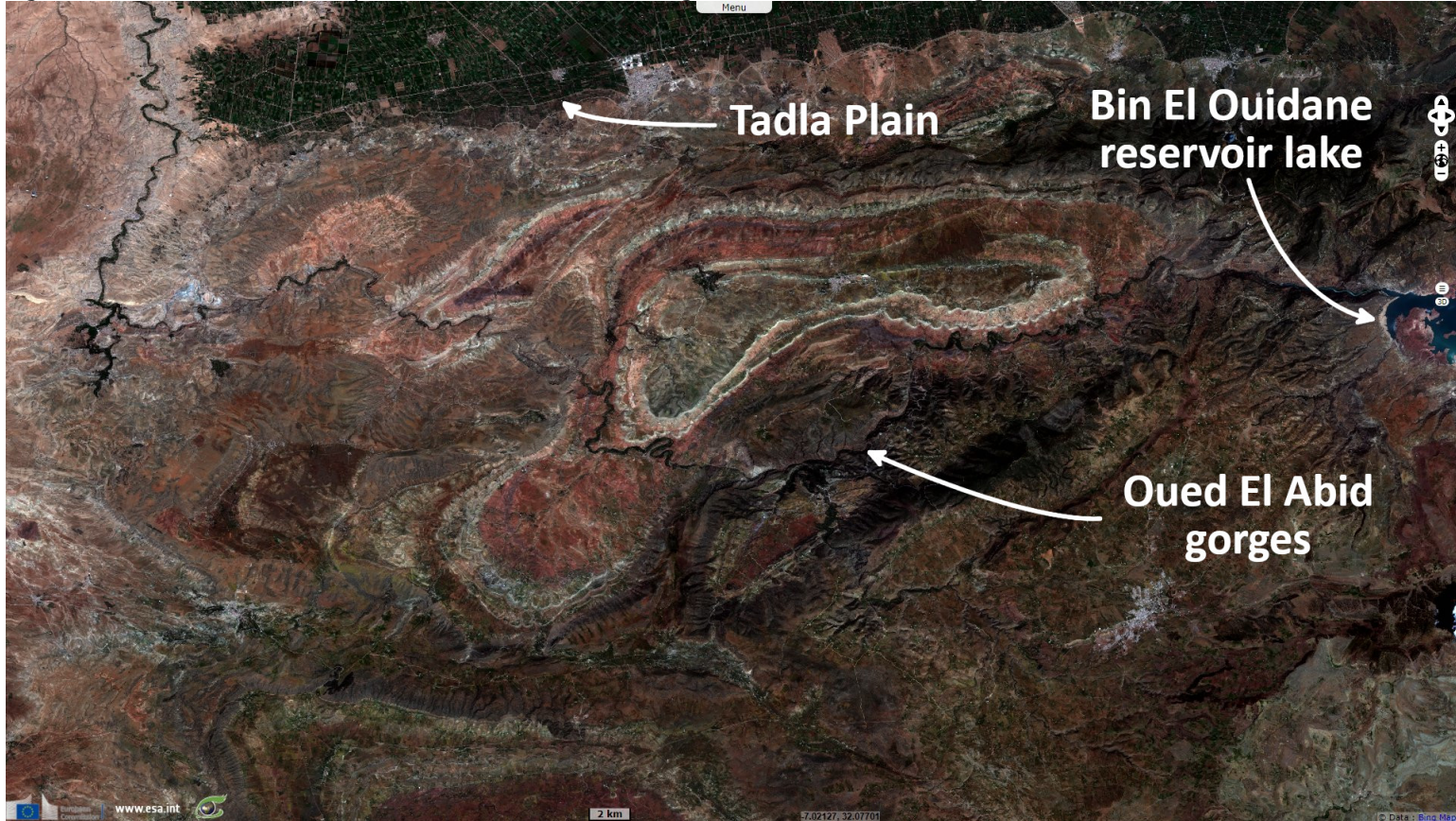


Fig. 2 - Cop-DEM - This valley around the El Abid river reveals multiple geologic layers as the differential erosion exceeds 2000 meters..

[2D view](#)

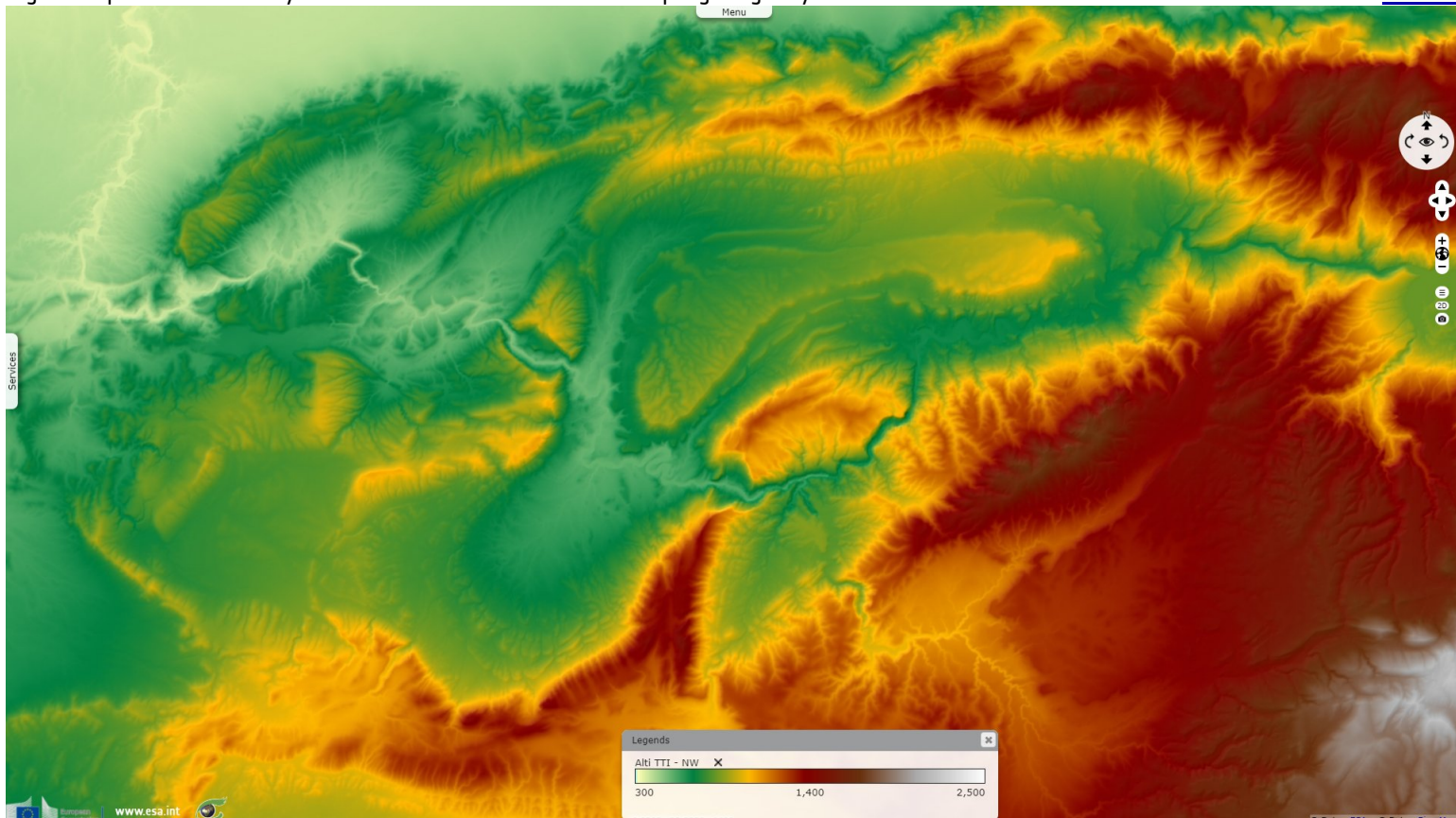
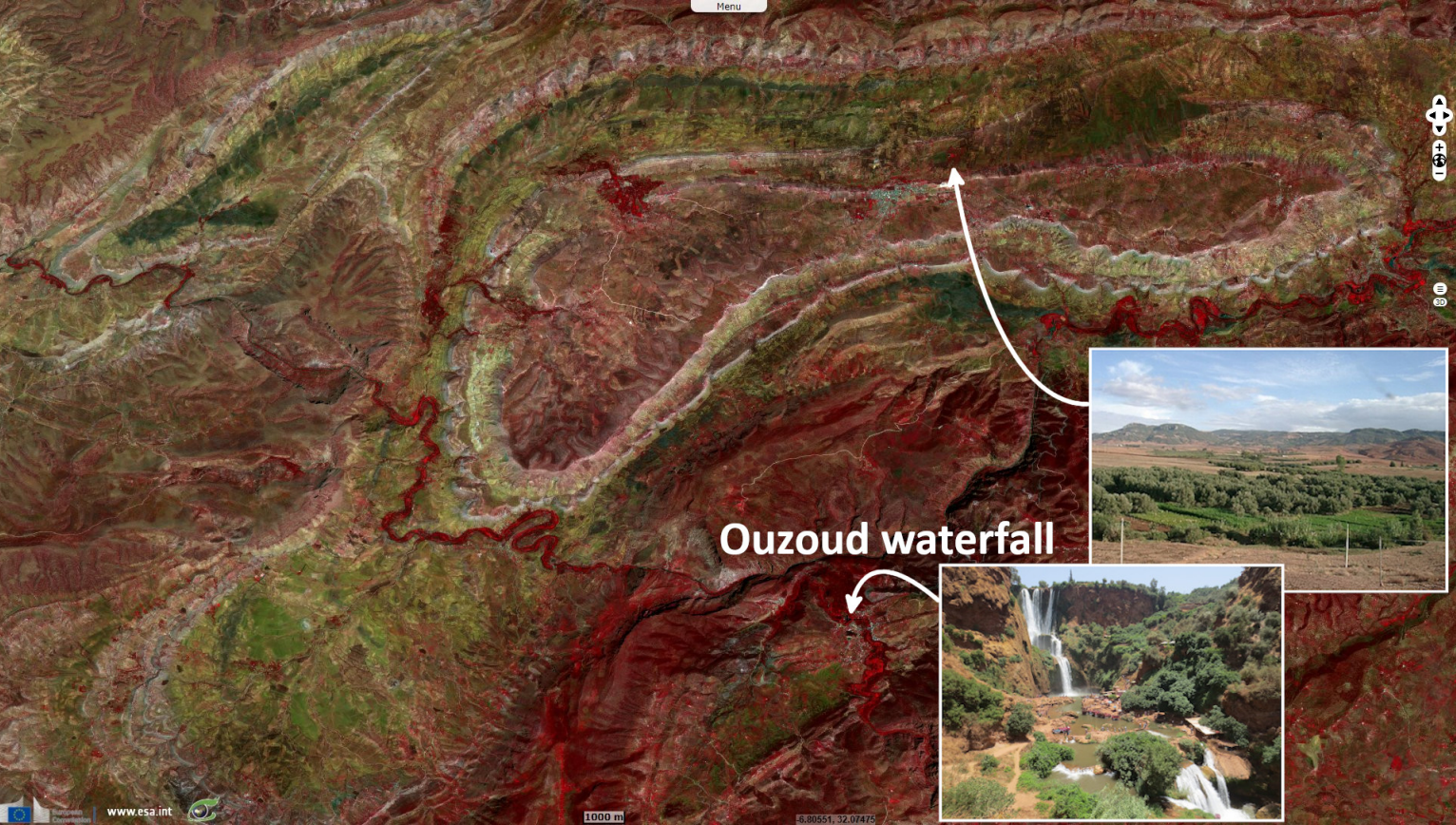














Fig. 3 - S2 (27.04.2019) - In addition to the lacework bordering several of the layers, the region is also known for its gorges and waterfalls. [2D view](#)



*The views expressed herein can in no way be taken to reflect the official opinion of the European Space Agency or the European Union.
Contains modified Copernicus Sentinel data 2022, processed by VisioTerra.*

More on European Commission space:							
More on ESA:				S-1 website	S-2 website	S-3 website	
More on Copernicus program:				SciHub portal	Cophub portal	Inthub portal	Colhub portal
More on VisioTerra:				Sentinel Vision Portal	Envisat+ERS portal	Swarm+GOCE portal	CryoSat portal