

A fire in Moria migrant camp leaves 12000 people without shelter, Lesbos island, Greece

Sentinel-2 MSI acquired on 11 September 2015 at 08:57:36 UTC
Sentinel-2 MSI acquired on 04 September 2020 at 08:56:01 UTC
Sentinel-2 MSI acquired on 09 September 2020 at 08:55:59 UTC

Author(s): Sentinel Vision team, VisioTerra, France - svp@visioterra.fr

Keyword(s): Fire, health, security, island, archipelago, fire, Greece.

Fig. 1 - S2 (09.09.2020) - Lesbos is the third largest Greek island, it lives mainly of agriculture and tourism.

[2D view](#)



Fig. 2 - S2 (11.09.2015) - Non-Syrian migrants have been gathered in the enclosed registering camp of Mória, east of the island.

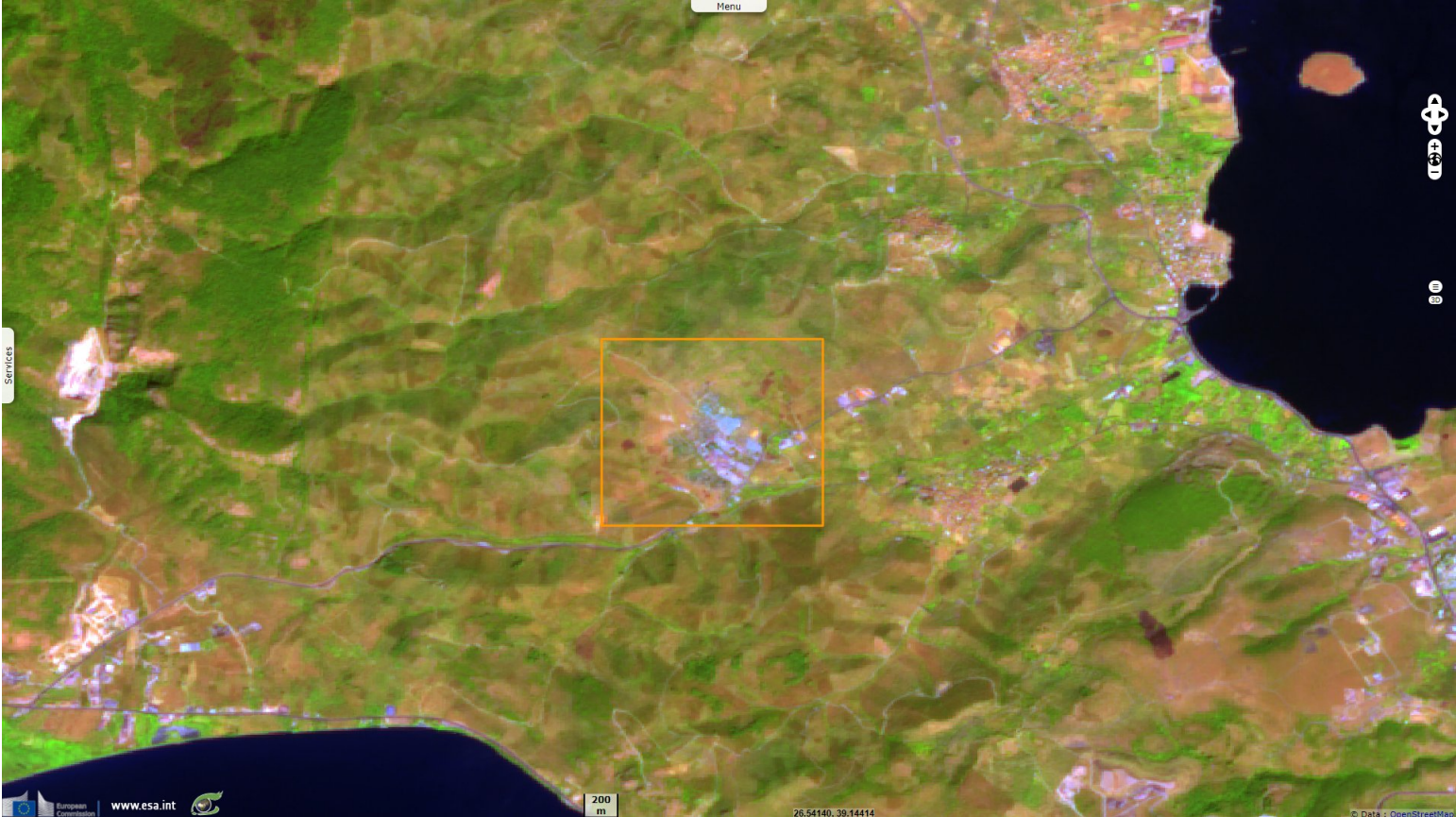
[2D view](#)



Due to its proximity to the Turkish coast, Lesbos has become a place where migrants reach Greece during the Greek genocide and the Syrian civil war.

Fig. 3 - S2 (04.09.2020) - With new arrivals, the migrant camp has grown and has become overcrowded.

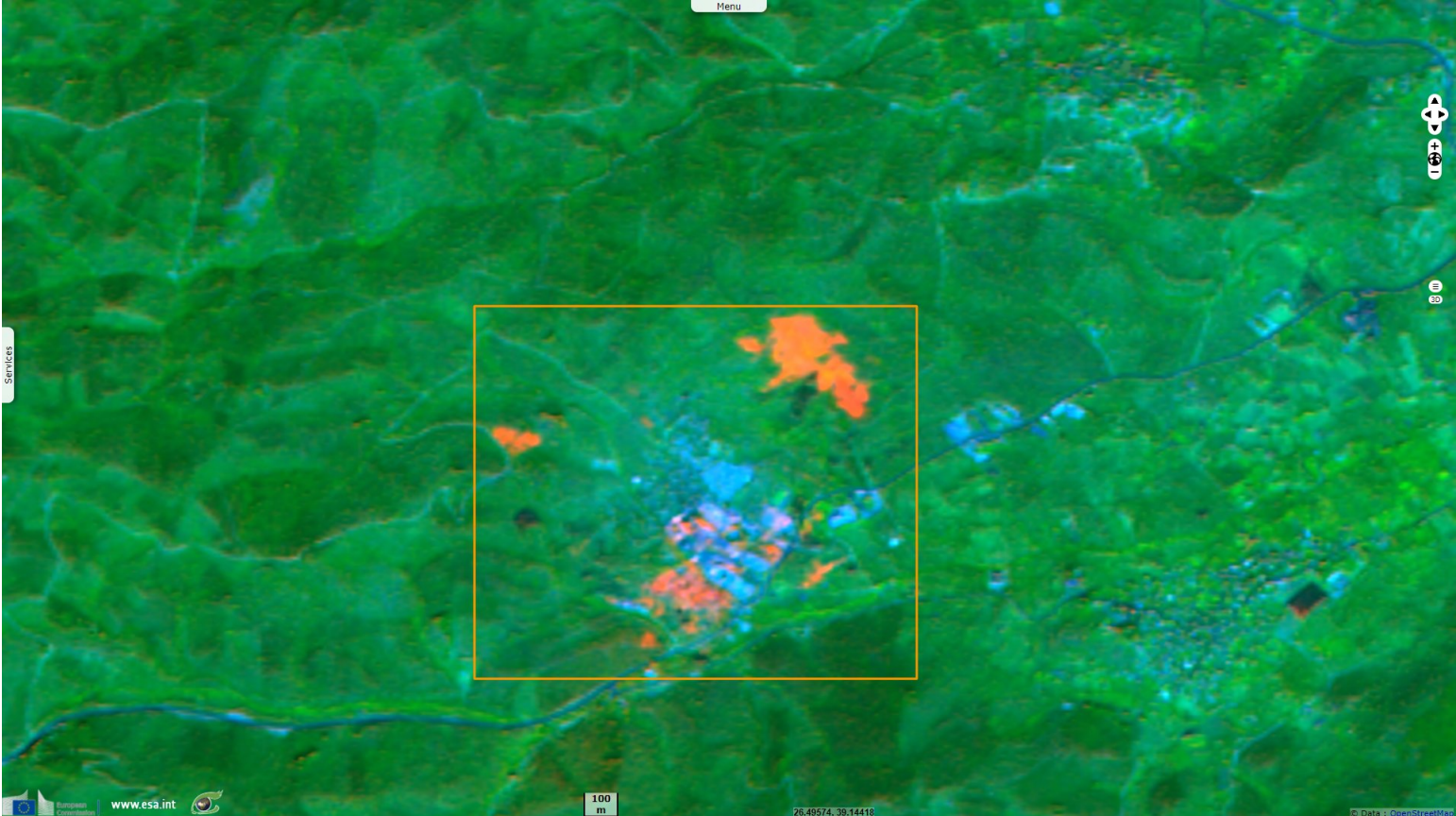
[2D view](#)















With four times as many people as it was designed to accommodate, many live in appalling conditions, even more since it is under lockdown.

Fig. 4 - S2 (09.09.2020) - Following a demonstration related to the lockdown, a devastating fire left 12 000 without shelter.

[2D animation](#) [2D view](#)




This tragedy leaves thousands in extreme precarity, causing a combination of humanitarian, border and sanitary issues.

More on European Commission space:							
More on ESA:				S-1 website	S-2 website	S-3 website	
More on Copernicus program:				SciHub portal	COPERNICUS portal	Intrahub portal	ColHub portal
More on VisioTerra:				Sentinel Vision Portal	Envisat+ERS portal	Swarm+GOCE portal	CryoSat portal



Funded by the EU and ESA

SED-728-SentinelVision

powered by  VisioTerra