

# An invaluable ancient archaeological site destroyed by Isis in Dilbarjin, Afghanistan

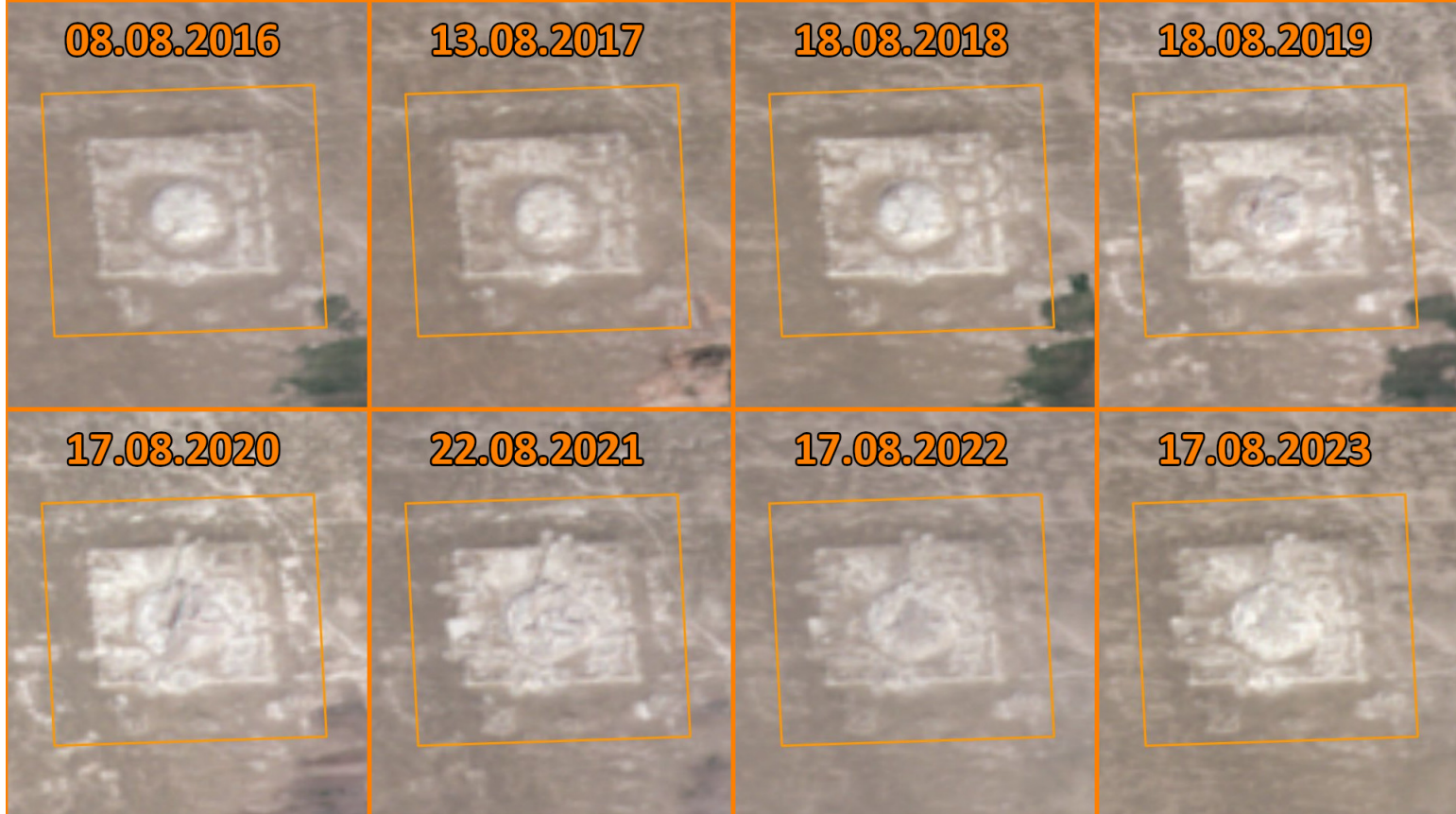
Sentinel-2 MSI acquired on 08 August 2016 at 06:16:32 UTC  
Sentinel-2 MSI acquired on 13 August 2017 at 06:16:31 UTC  
Sentinel-2 MSI acquired on 18 August 2018 at 06:16:31 UTC  
Sentinel-2 MSI acquired on 18 August 2019 at 06:16:39 UTC  
Sentinel-2 MSI acquired on 17 August 2020 at 06:16:41 UTC  
Sentinel-2 MSI acquired on 22 August 2021 at 06:16:31 UTC  
Sentinel-2 MSI acquired on 17 August 2022 at 06:16:41 UTC  
Sentinel-2 MSI acquired on 17 August 2023 at 06:16:39 UTC

**Author(s):** Sentinel Vision team, VisioTerra, France - [svp@visioterra.fr](mailto:svp@visioterra.fr)

**Keyword(s):** Land, Afghanistan



Fig. 1 - S2 (08.08.2016->17.08.2023) - Progressive destruction of Dilberjin site. [2D view](#) [2D view](#) [2D view](#) [2D view](#) [2D view](#) [2D view](#) [2D view](#) [2D view](#)



Dilberjin Tepewas may have been founded during the Achaemenid Empire (559-330 BC). Under the Kushan Empire (30 BC - 375 AD), it became a major local centre. After the Kushano-Sassanids (230-365 AD), the city was abandoned. It contains archaeological remains of Greek, Hindu and Iranian religions. Since 2019, Isis in Afghanistan has been looting and destroying the site, causing permanent damage.

*The views expressed herein can in no way be taken to reflect the official opinion of the European Space Agency or the European Union.  
Contains modified Copernicus Sentinel data 2023, processed by VisioTerra.*

More on European Commission space:						
More on ESA:				<a href="#">S-1 website</a>	<a href="#">S-2 website</a>	<a href="#">S-3 website</a>
More on Copernicus program:				<a href="#">SciHub portal</a>	<a href="#">Cophub portal</a>	<a href="#">Inthub portal</a> <a href="#">Colhub portal</a>
More on VisioTerra:				<a href="#">Sentinel Vision Portal</a>	<a href="#">Envisat+ERS portal</a>	<a href="#">Swarm+GOCE portal</a> <a href="#">CryoSat portal</a>