

Iceberg endangers Greenland village

Sentinel-2 MSI acquired on 23 June 2018 at 15:59:01 UTC
Sentinel-2 MSI acquired on 28 June 2018 at 15:58:19 UTC
Sentinel-1 CSAR IW acquired on 10 July 2018 at 20:48:13 UTC
Sentinel-2 MSI acquired on 19 July 2018 at 16:19:01 UTC
Sentinel-1 CSAR IW acquired on 22 July 2018 at 20:48:14 UTC

Author(s): Sentinel Vision team, VisioTerra, France - svp@visioterra.fr

Keyword(s): Climate change, polar, coastal, ice melt, iceberg, tsunami, emergency, natural disaster, Greenland, Denmark



[2D Layerstack](#)

Fig. 1 - S2 (23.06.2018) - 4,3,2 natural colour - Innaarsuit village lies on the western coast of Greenland, well in the arctic circle. [2D view](#) [3D view](#)

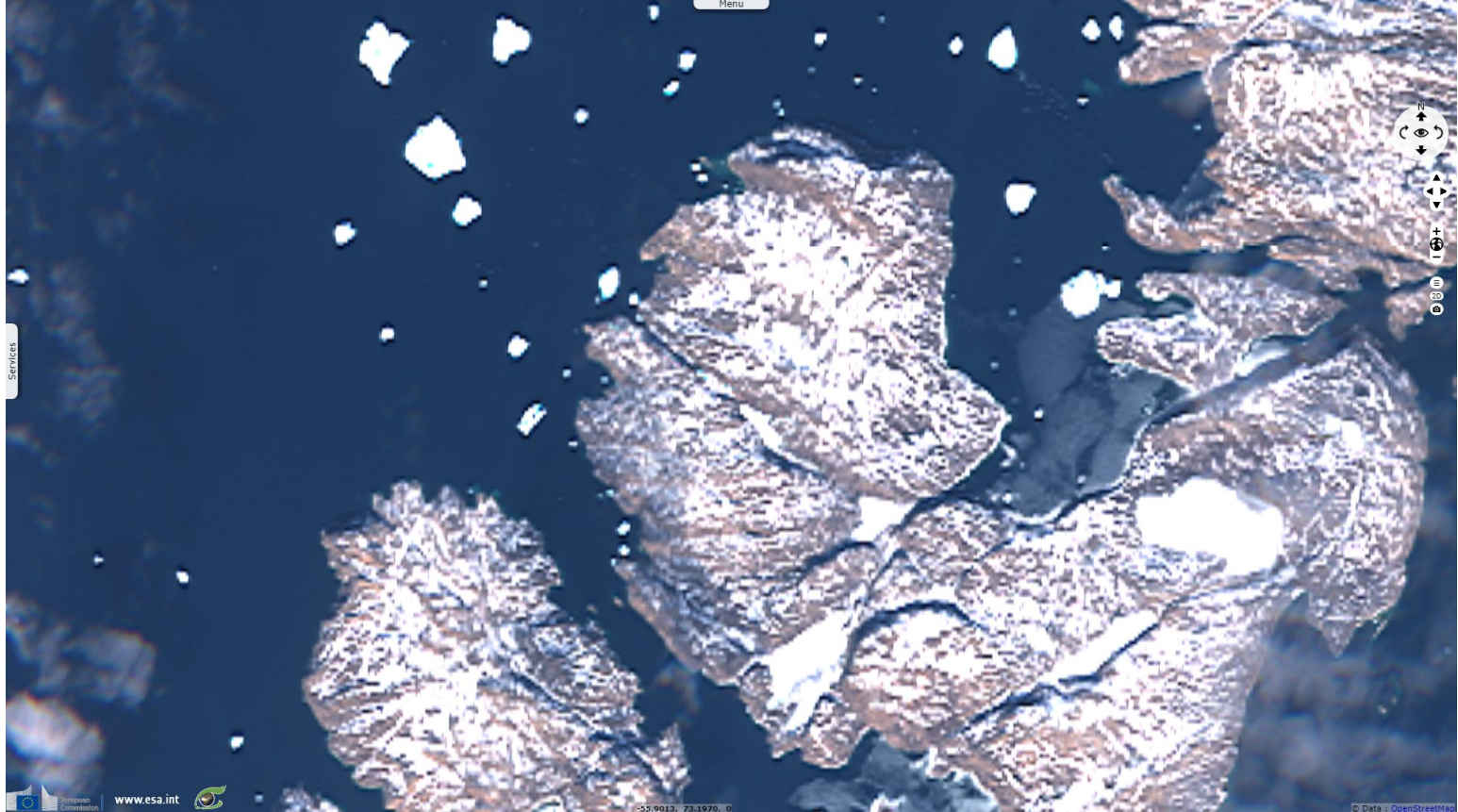


Fig. 2 - S2 (28.06.2018) - In July, a 200m wide and 100m high iceberg approached dangerously near its coast. [3D animation](#) [3D view](#)



Fig. 3 - S2 (19.07.2018) - The villagers have been evacuated, they hope currents will carry the iceberg away.

[3D animation](#) [3D view](#)

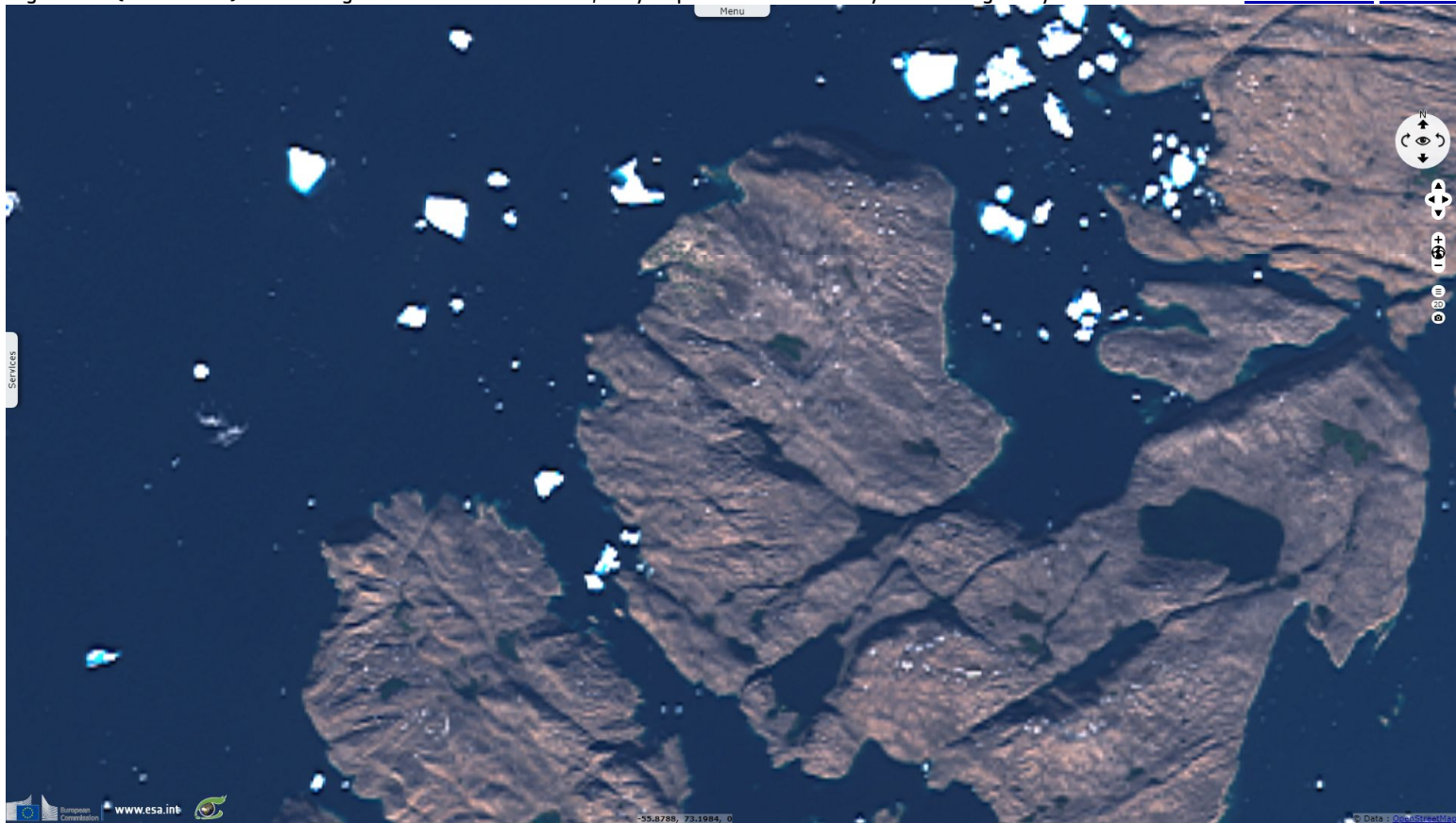
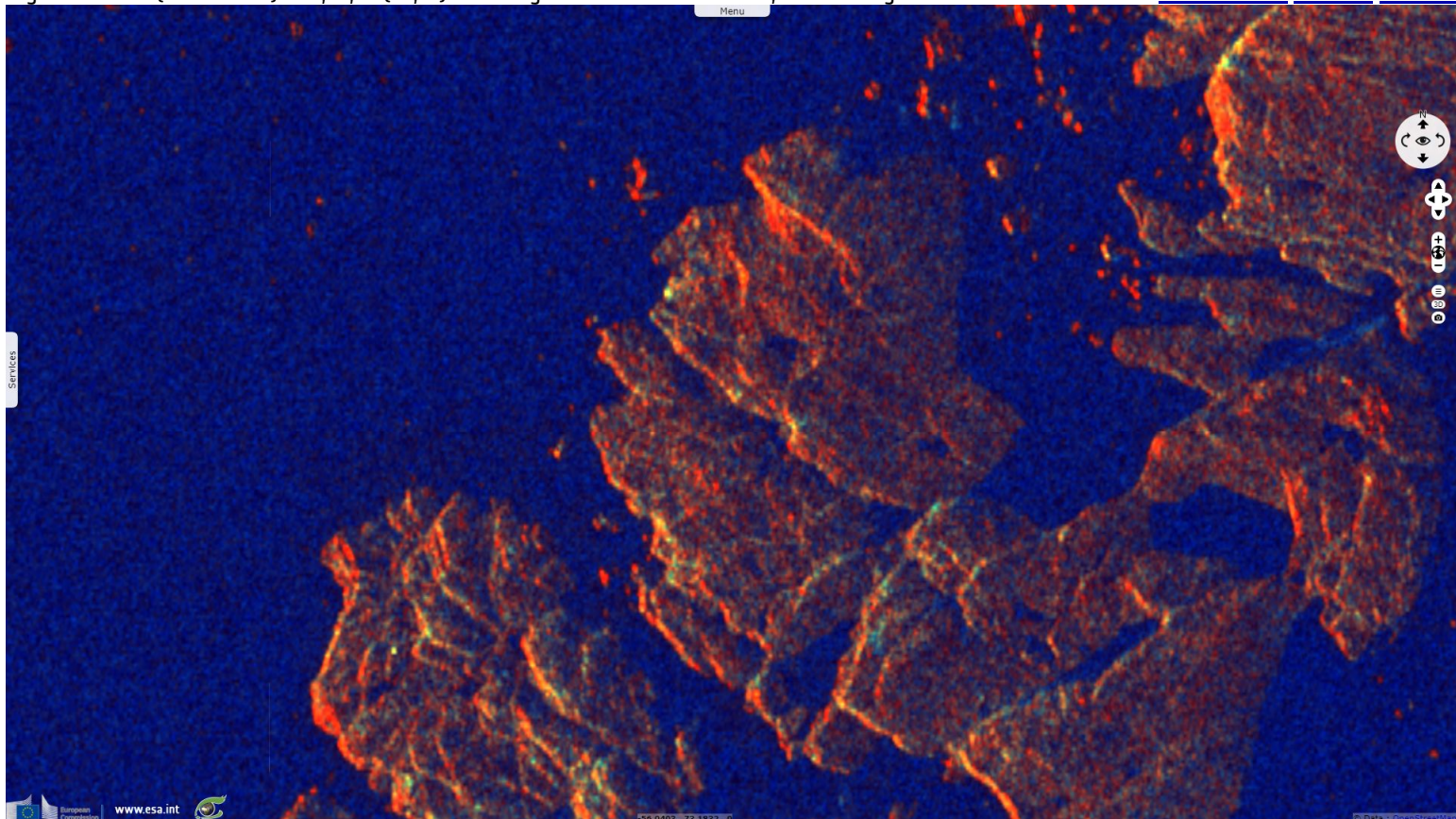


Fig. 4 - S1 IW (22.07.2018) - vv,vh,ndi(vh,vv) - It weights over 11 million tons, its breaking could cause a tsunami.

[3D animation](#) [3D view](#) [3D view](#)



The views expressed herein can in no way be taken to reflect the official opinion of the European Space Agency or the European Union.

| | | | | | | | | |
|------------------------------------|--|--|--|--|------------------------------------|-----------------------------------|--------------------------------|----------------|
| More on European Commission space: | | | | | | | | |
| More on ESA: | | | | S-1 website | S-2 website | S-3 website | | |
| More on Copernicus program: | | | | SciHub portal | Cophub portal | Inthub portal | Colhub portal | |
| More on VisioTerra: | | | | Sentinel Vision Portal | Envisat+ERS portal | Swarm+GOCE portal | CryoSat portal | Proba-V portal |