

A large flood affects South-East Asia

Sentinel-1 CSAR IW acquired on 05 September 2021 from 11:20:29 to 11:20:54 UTC

Sentinel-1 CSAR IW acquired on 10 September 2021 at 11:28:54 UTC

...

Sentinel-1 CSAR IW acquired on 02 October 2021 from 23:08:00 to 23:08:50 UTC

Sentinel-1 CSAR IW acquired on 05 October 2021 from 11:19:54 to 11:20:19 UTC

Author(s): Sentinel Vision team, VisioTerra, France - svp@visioterra.fr

Keyword(s): Emergency, natural disaster, flooding, river, Thailand, Cambodia



[2D Layerstack](#)

Fig. 1 - S3 SLSTR (23.09.2021 am) - Tropical Storm Dianmu was a low intensity storm which sustained wind speed never exceeded 65 km/h. [2D view](#)

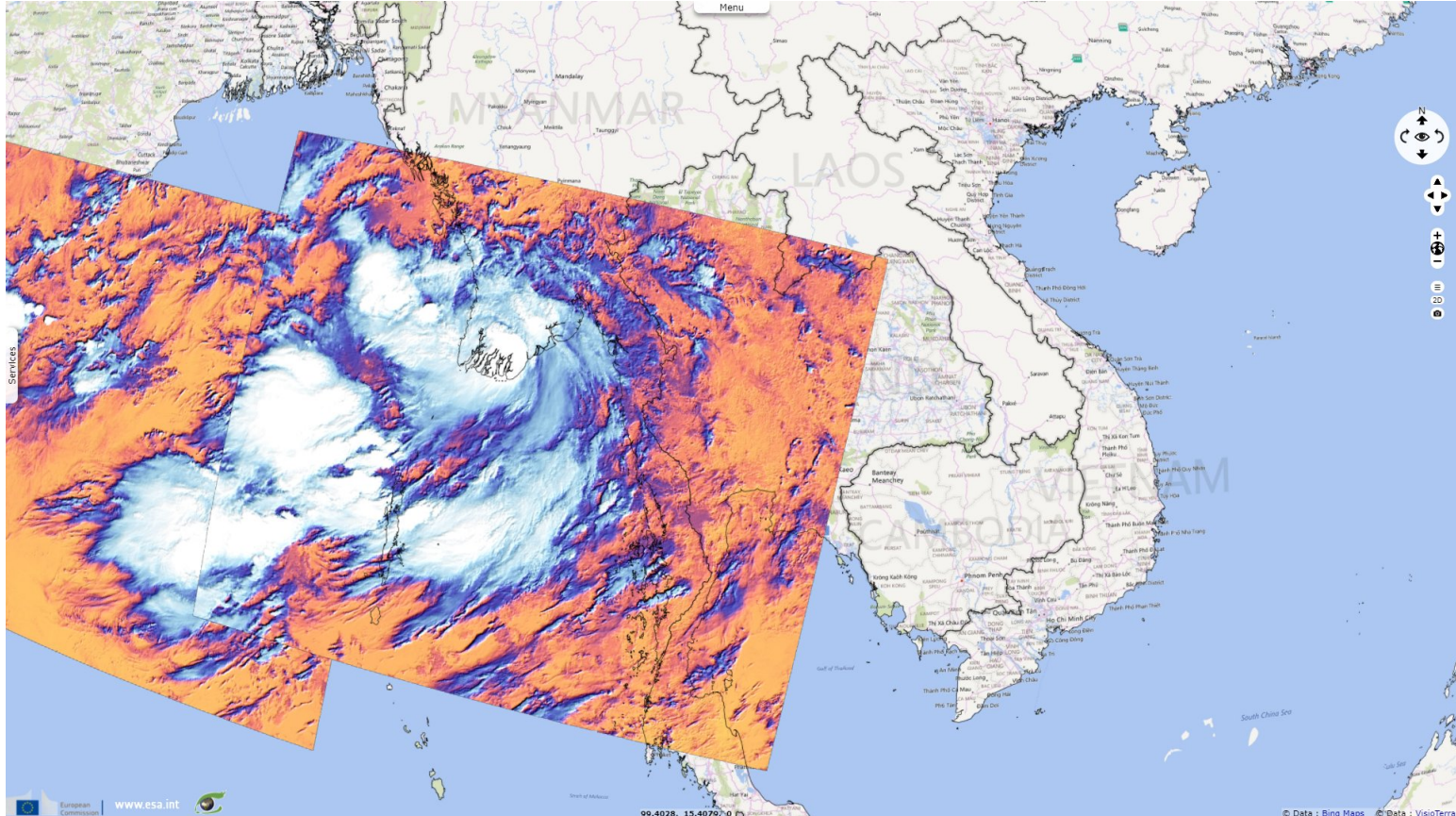


Fig. 2 - S3 SLSTR (23.09.2021 pm) - It brought heavy rainfall, flooding South-East Asia, including Thailand and Cambodia. [2D view](#)

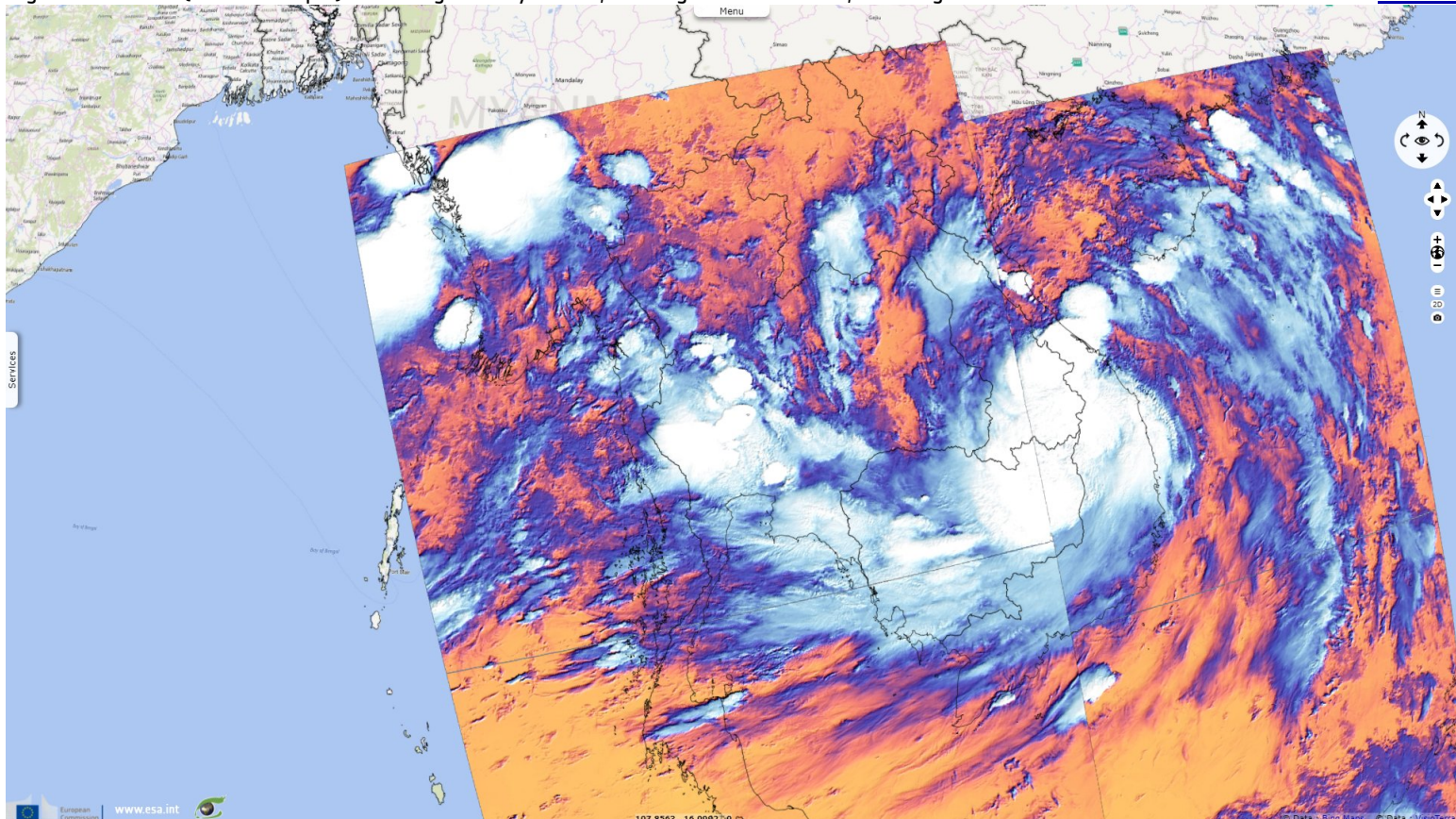


Fig. 3 - S1 (05-10.09.2021) - Thailand's Disaster Prevention & Mitigation Department reported flooding across 6827 villages in 31 provinces. [2D view](#)

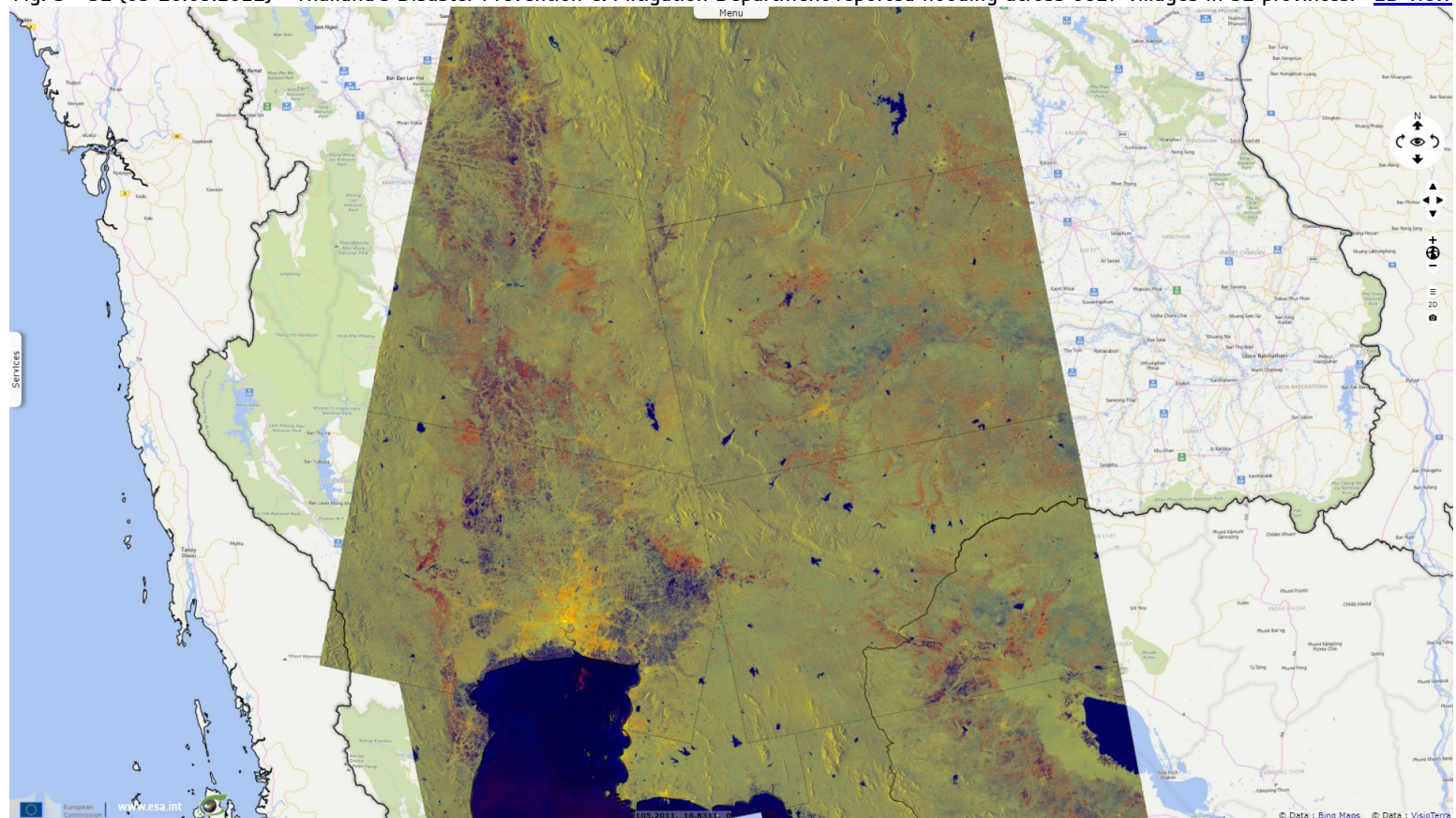
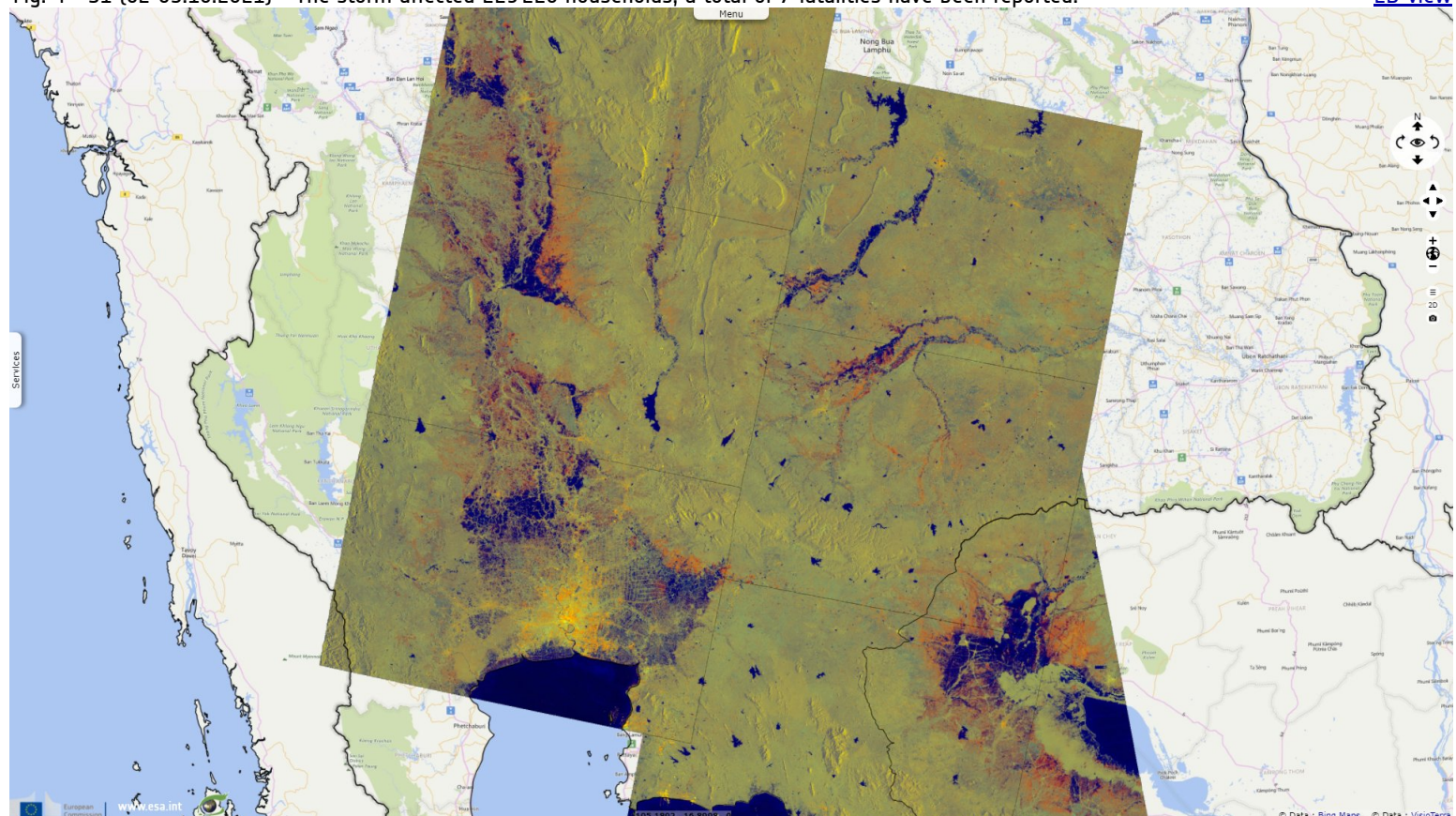














Fig. 4 - S1 (02-05.10.2021) - The storm affected 229 220 households; a total of 7 fatalities have been reported. [2D view](#)



*The views expressed herein can in no way be taken to reflect the official opinion of the European Space Agency or the European Union.
Contains modified Copernicus Sentinel data 2021, processed by VisioTerra.*

More on European Commission space:						
More on ESA:				S-1 website	S-2 website	S-3 website
More on Copernicus program:				SciHub portal	Cophub portal	Inthub portal
More on VisioTerra:				Sentinel Vision Portal	Envisat+ERS portal	Swarm+GOCE portal
				CryoSat portal		