

Italian subalpine lakes

Sentinel-3 OLCI FR acquired on **28 March 2017** at 09:27:59 UTC
Sentinel-2 MSI acquired on **03 November 2017** at 10:22:01 UTC
Sentinel-1 CSAR IW acquired on **31 December 2017** at 17:14:14 UTC

Author(s): Sentinel Vision team, VisioTerra, France - svp@visioterra.fr

Keyword(s): land, mountain, hydrology, lakes, snow, ice, forestry, agriculture



[2D Layerstack](#)

Fig. 1 - S3 OLCI (28.03.2017) - 10,6,3 natural colour - View of the Alps on a clear Spring day.

[2D view](#)



Fig. 2 - S1 (31.12.2017) - vv,vh,ndi(vh,vv) - Milan is located south of the largest Italian subalpine lakes.

[3D view](#) [2D view](#)

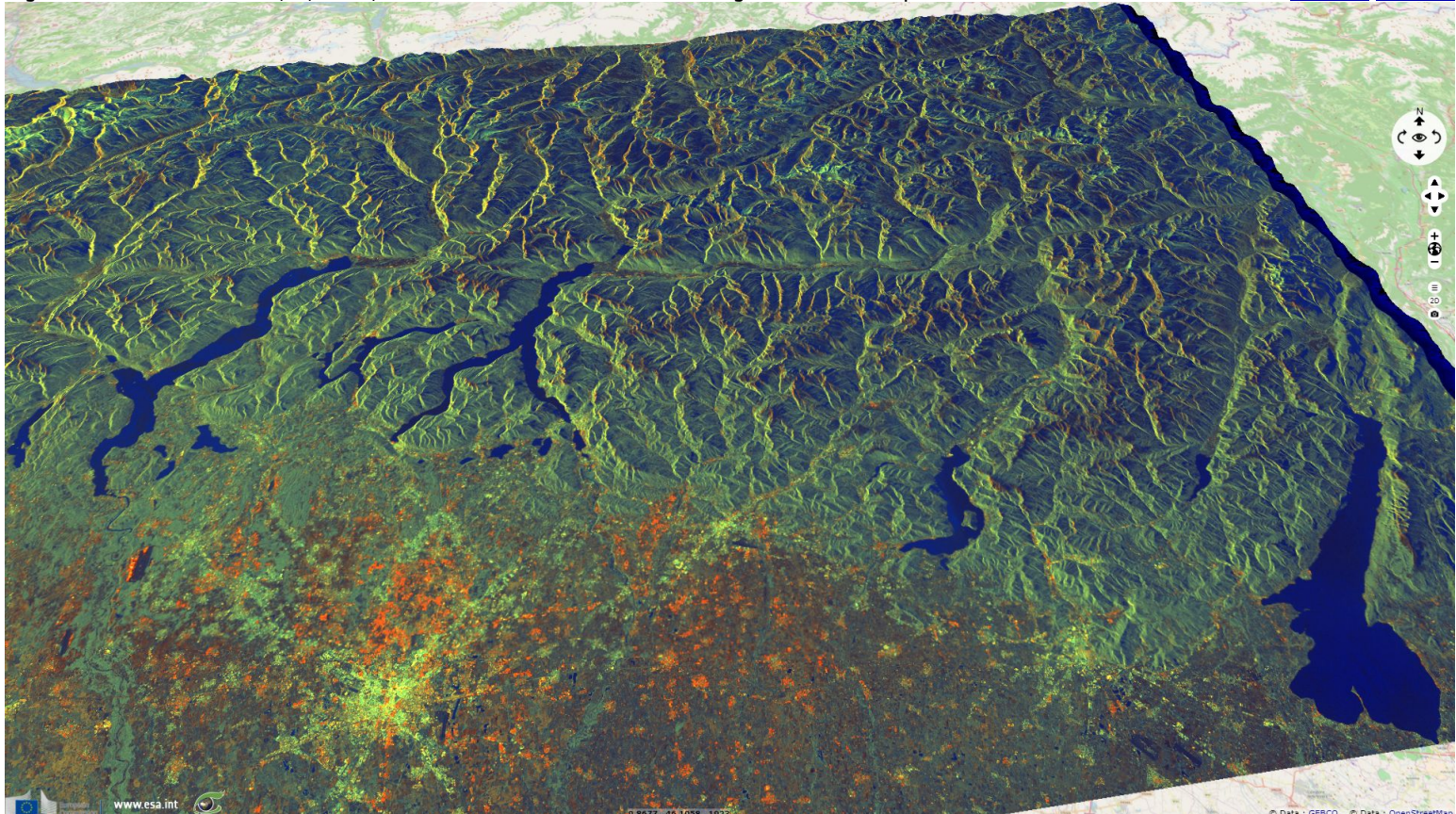


Fig. 3 - S2 (03.11.2017) - 4,3,2 & 8,4,3 & 12,8,2 colour composites - Zoom on Lakes Garda & Iseo in the Rhaetian Alps. [3D animation](#) [2D animation](#)



Fig. 4 - S2 - Zoom on Lake Maggiore, Lake Lugano & Lake Como in the Lepontine Alps. [3D animation](#) [2D animation](#)



The views expressed herein can in no way be taken to reflect the official opinion of the European Space Agency or the European Union.

More on European Commission space:								
More on ESA:				S-1 website	S-2 website	S-3 website		
More on Copernicus program:				SciHub portal	Cophub portal	Inthub portal	Colhub portal	
More on VisioTerra:				Sentinel Vision Portal	Envisat+ERS portal	Swarm+GOCE portal	CryoSat portal	Proba-V portal