



[2D Layerstack](#)

Bukidnon Province, land of pineapple plantations, Philippines

Sentinel-2 MSI acquired on **10 August 2019** at 01:56:59 UTC

Sentinel-2 MSI acquired on **22 December 2020** at 02:13:39 UTC

Sentinel-1 CSAR IW acquired on **21 December 2022** at 21:24:14 UTC

Sentinel-1 CSAR IW acquired on **02 January 2023** at 21:24:13 UTC

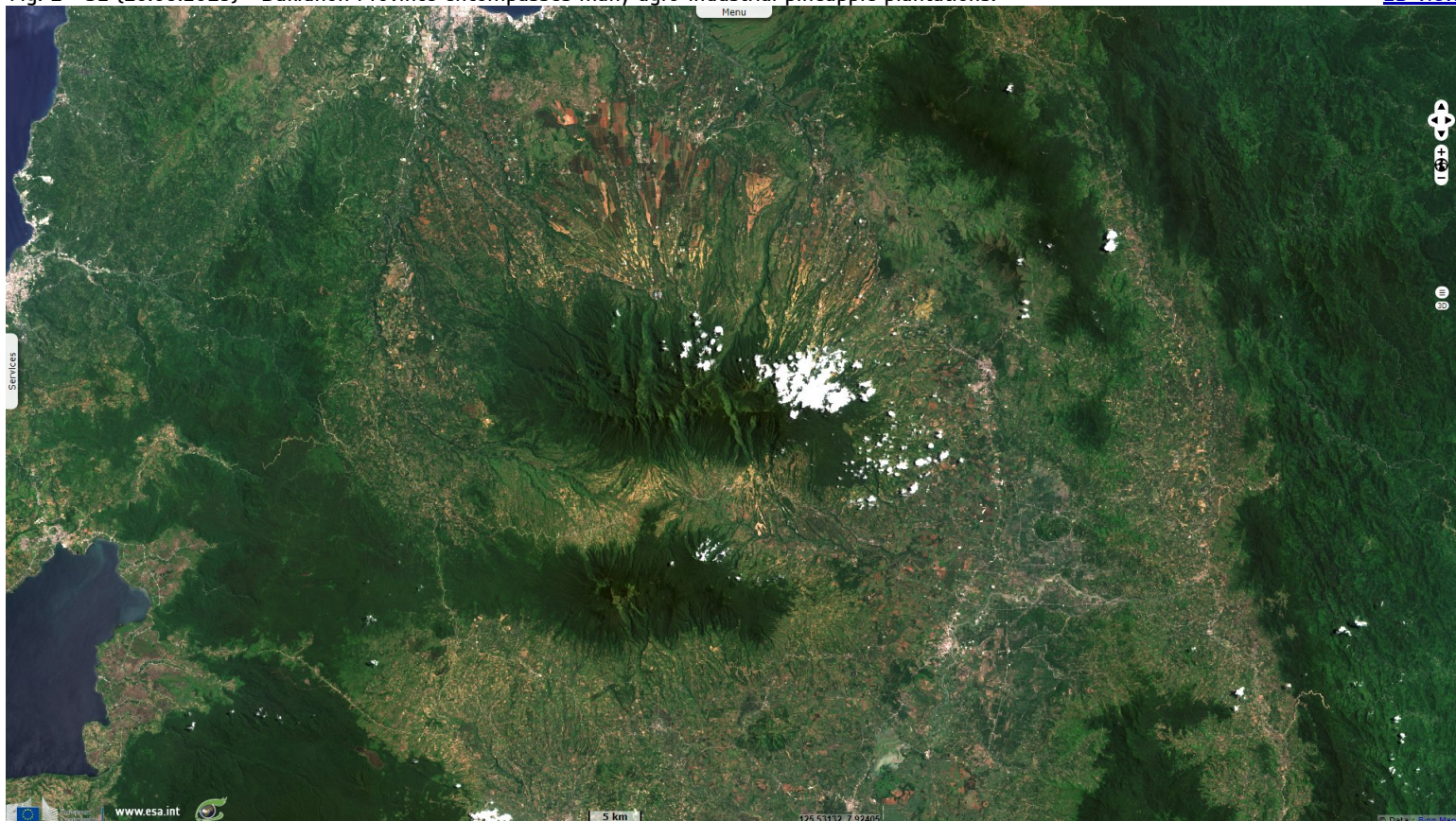
Sentinel-1 CSAR IW acquired on **14 January 2023** at 21:24:13 UTC

Author(s): Sentinel Vision team, VisioTerra, France - svp@visioterra.fr

Keyword(s): Land, agriculture, Phillipines

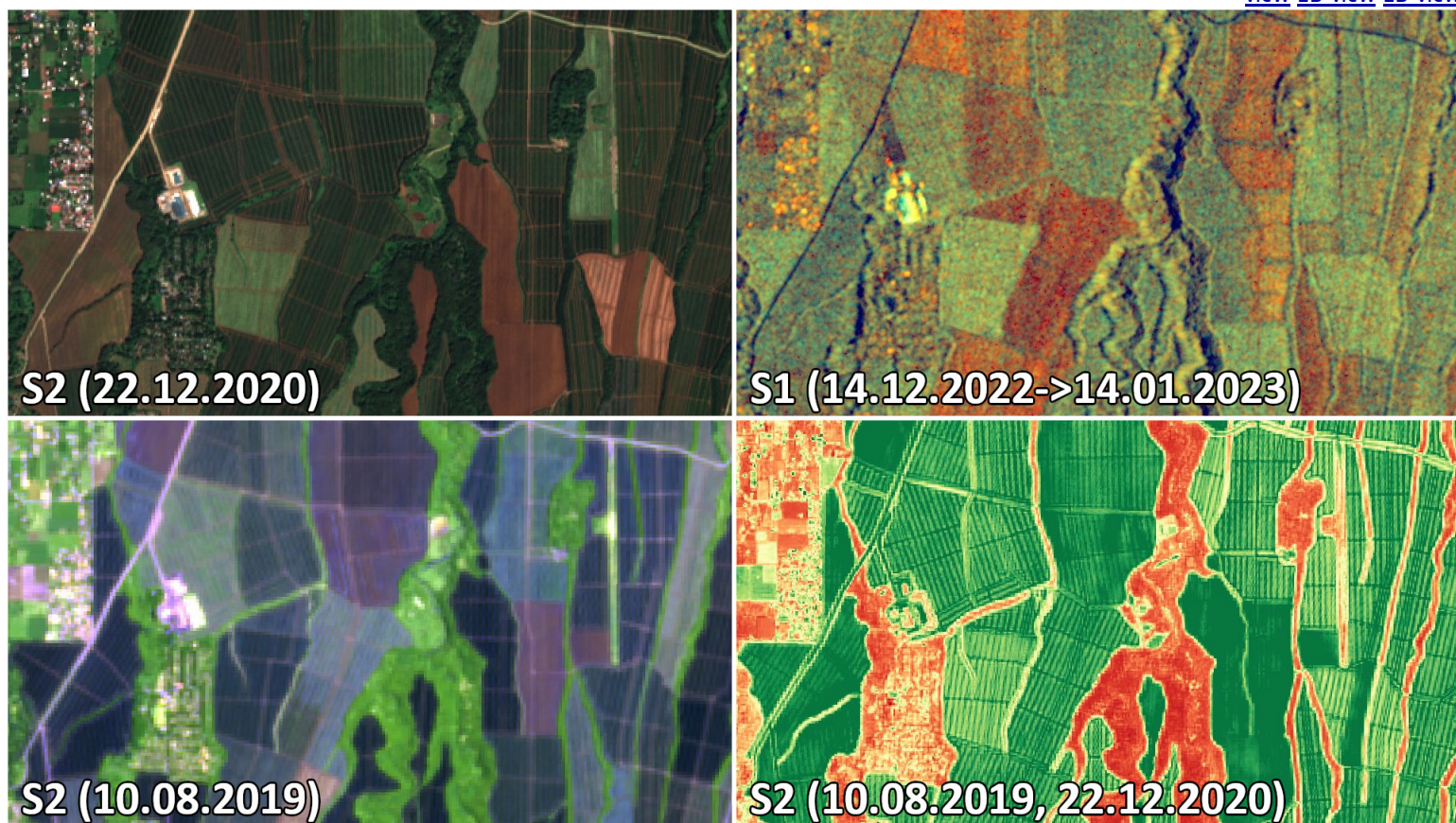
Fig. 1 - S2 (10.08.2019) - Bukidnon Province encompasses many agro-industrial pineapple plantations.

[2D view](#)



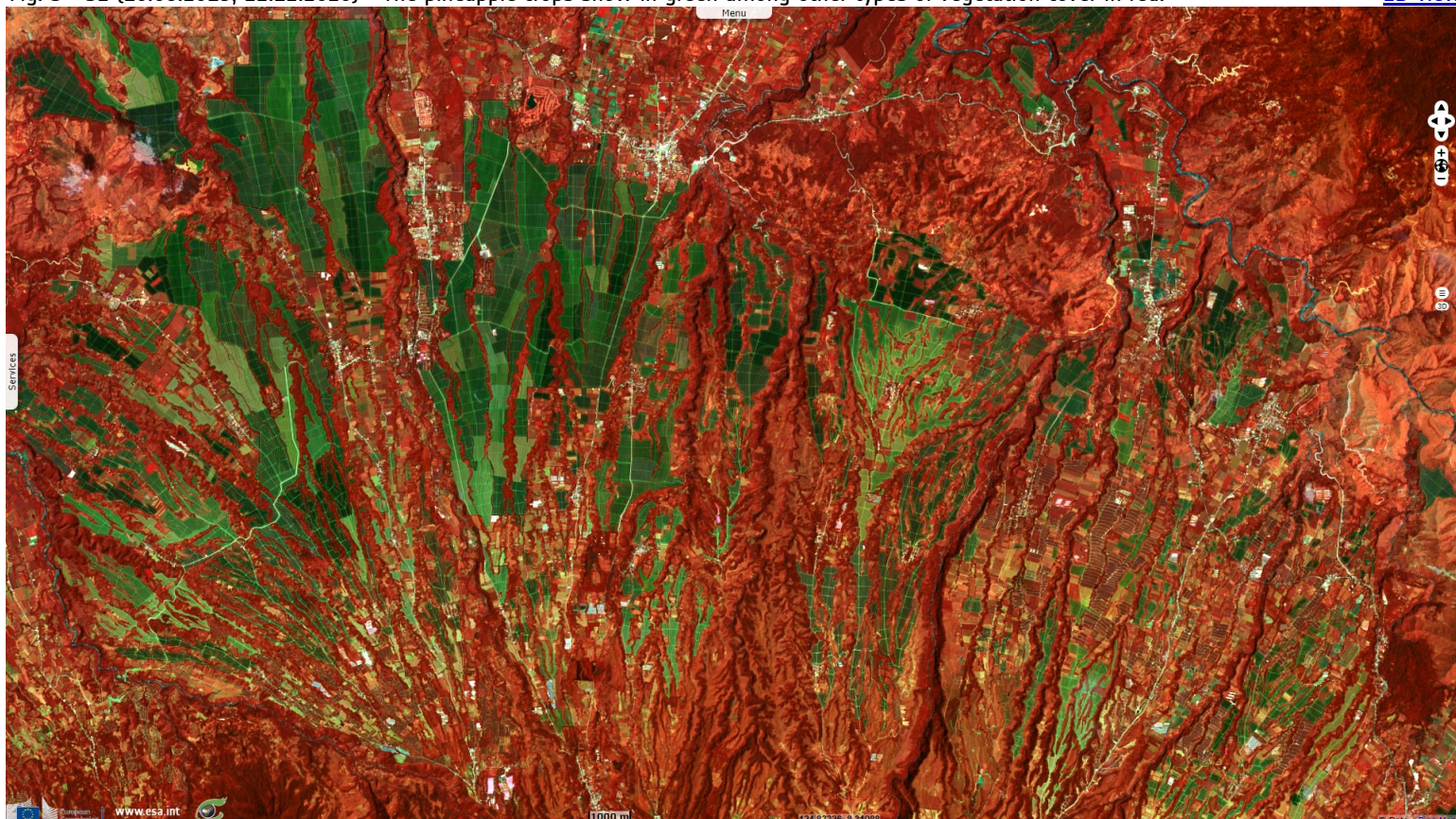
Pineapple supports more than 2 million persons in Philippines, the second largest pineapple producing country. The harvest never stops on the largest agro-industrial plantations, the largest of which covers 26 000 hectares.













Fig. 2 - S2 (10.08.2019; 22.12.2020) / S1 (14.12.2022->14.01.2023) - Its large plantations have a typical spectral and textural signature. [2D view](#) [2D view](#) [2D view](#) [2D view](#) [2D view](#)



A single pineapple plant can only yield one or two fruits. After harvesting, it has to be thrown away and another one planted. More and more entrepreneurs are recycling them and using them to make textiles. This very strong natural fibre is turned into vegan leather.

Fig. 3 - S2 (10.08.2019, 22.12.2020) - The pineapple crops show in green among other types of vegetation cover in red. [2D view](#)



More on European Commission space:							
More on ESA:				S-1 website	S-2 website	S-3 website	
More on Copernicus program:				SciHub portal	Cophub portal	Inthub portal	Colhub portal
More on VisioTerra:				Sentinel Vision Portal	Envisat+ERS portal	Swarm+GOCE portal	CryoSat portal