

Drug lord mountains, Sinaloa, Mexico

Sentinel-1 CSAR SM acquired on 22 November 2014 at 01:41:07 UTC
Sentinel-2 MSI acquired on 29 November 2020 & on 01 December 2020
Sentinel-1 CSAR IW acquired on 07 December 2020 at 01:49:20 UTC
Sentinel-1 CSAR IW acquired on 11 December 2020 & on 12 December 2020

Author(s): Sentinel Vision team, VisioTerra, France - svp@visioterra.fr

Keyword(s): Security, mountain range, agriculture, public health, Sierra Madre, Mexico, United States

[2D Layerstack](#)

Fig. 1 - S1 (11 & 12.2020) - The Sierra Madre Occidental lies between the Gulf of California and the Central Mexican Plateau.

[2D view](#)

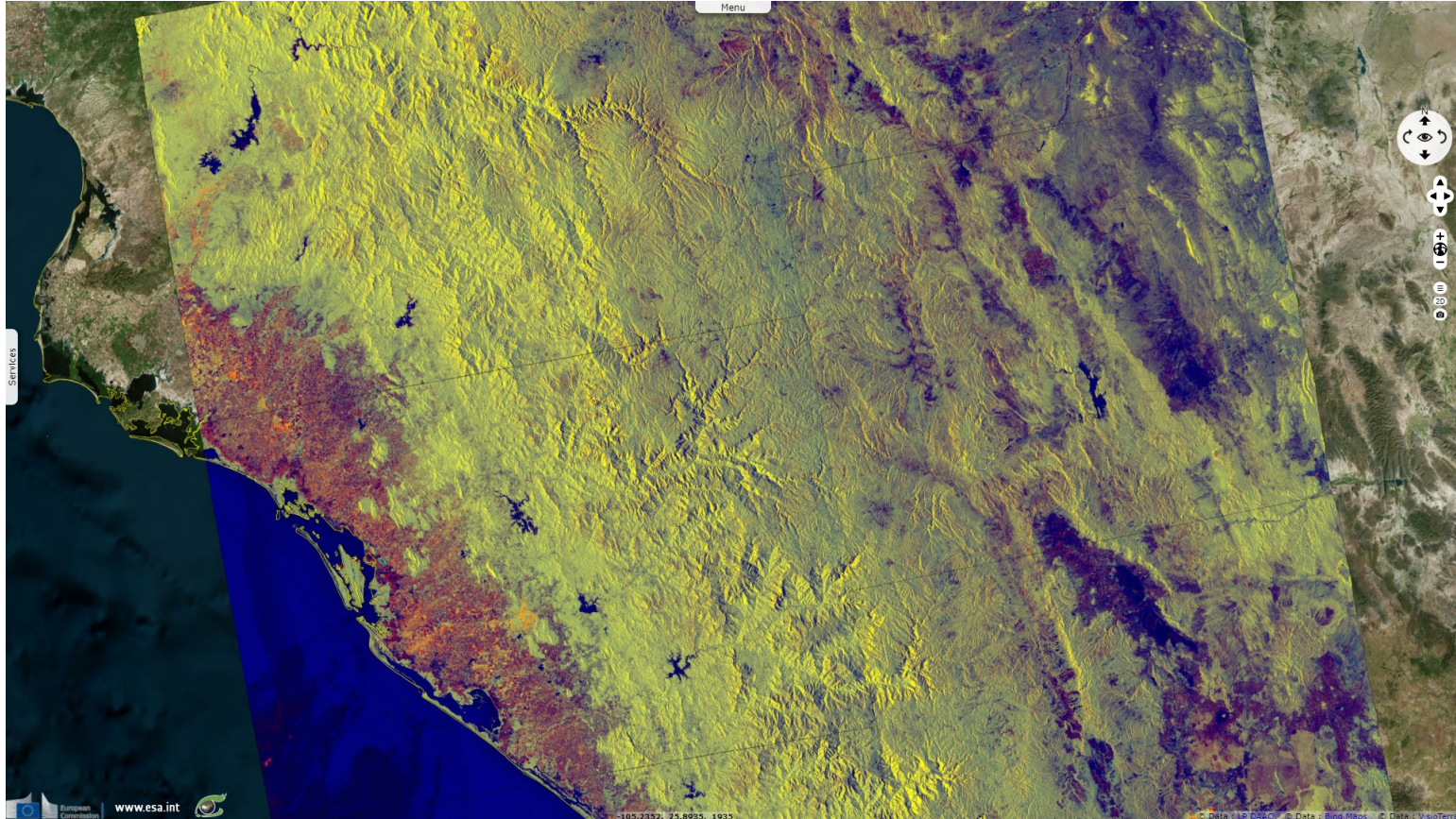
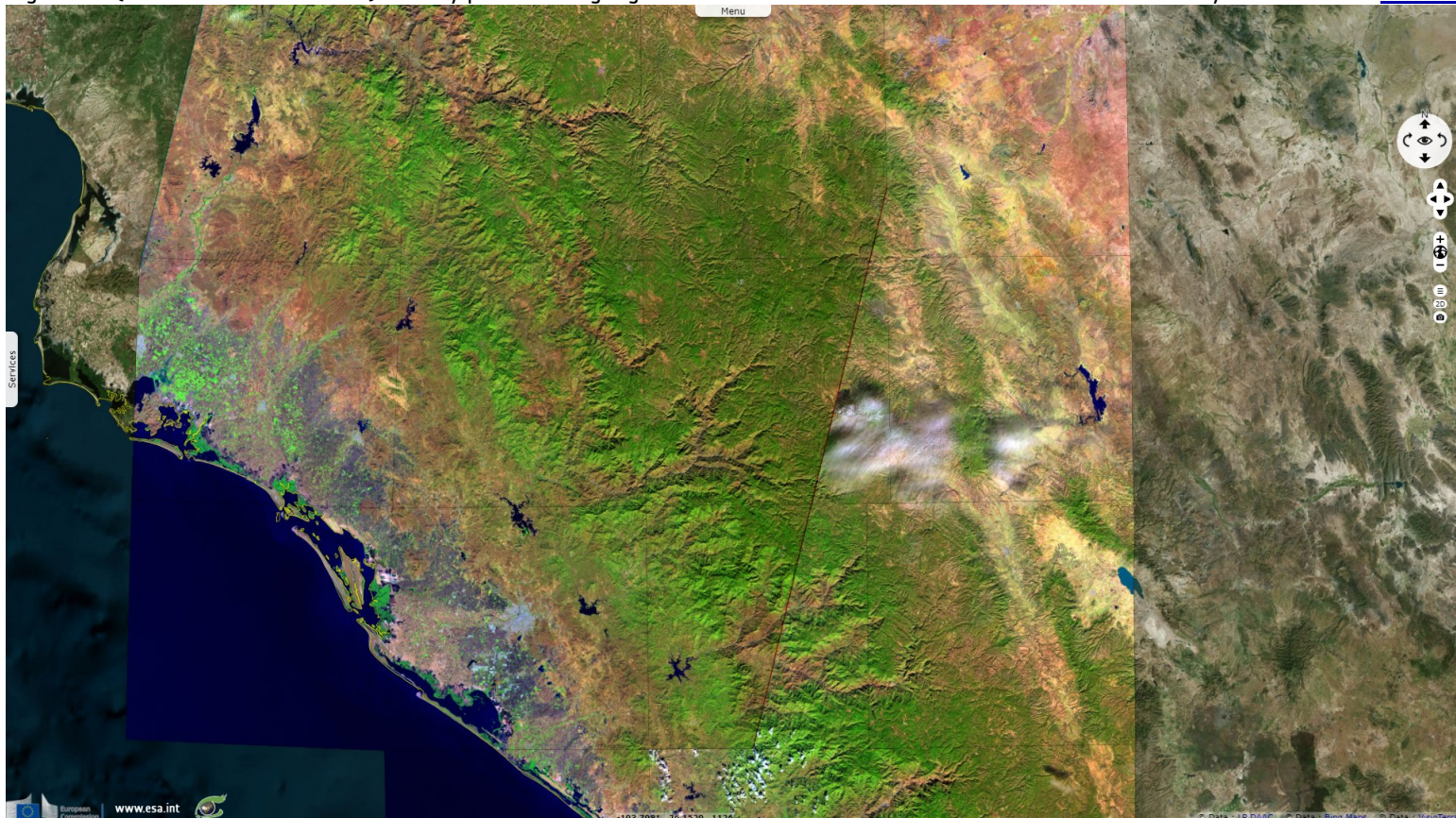


Fig. 2 - S2 (29.11.2020 & 01.12.2020) - A very powerful drug organisation lies in the state of Sinaloa and stretched in nearby coastal states.

[2D view](#)



It is where is produced large amounts of heroin sold in the United States, the turnover of the Sinaloa cartel is estimated at 2.9 billion euros.

Fig. 3 - S1 (22.11.2014) - Ejido Tampico is the Mexican city at the border with the United States.

[3D view](#)

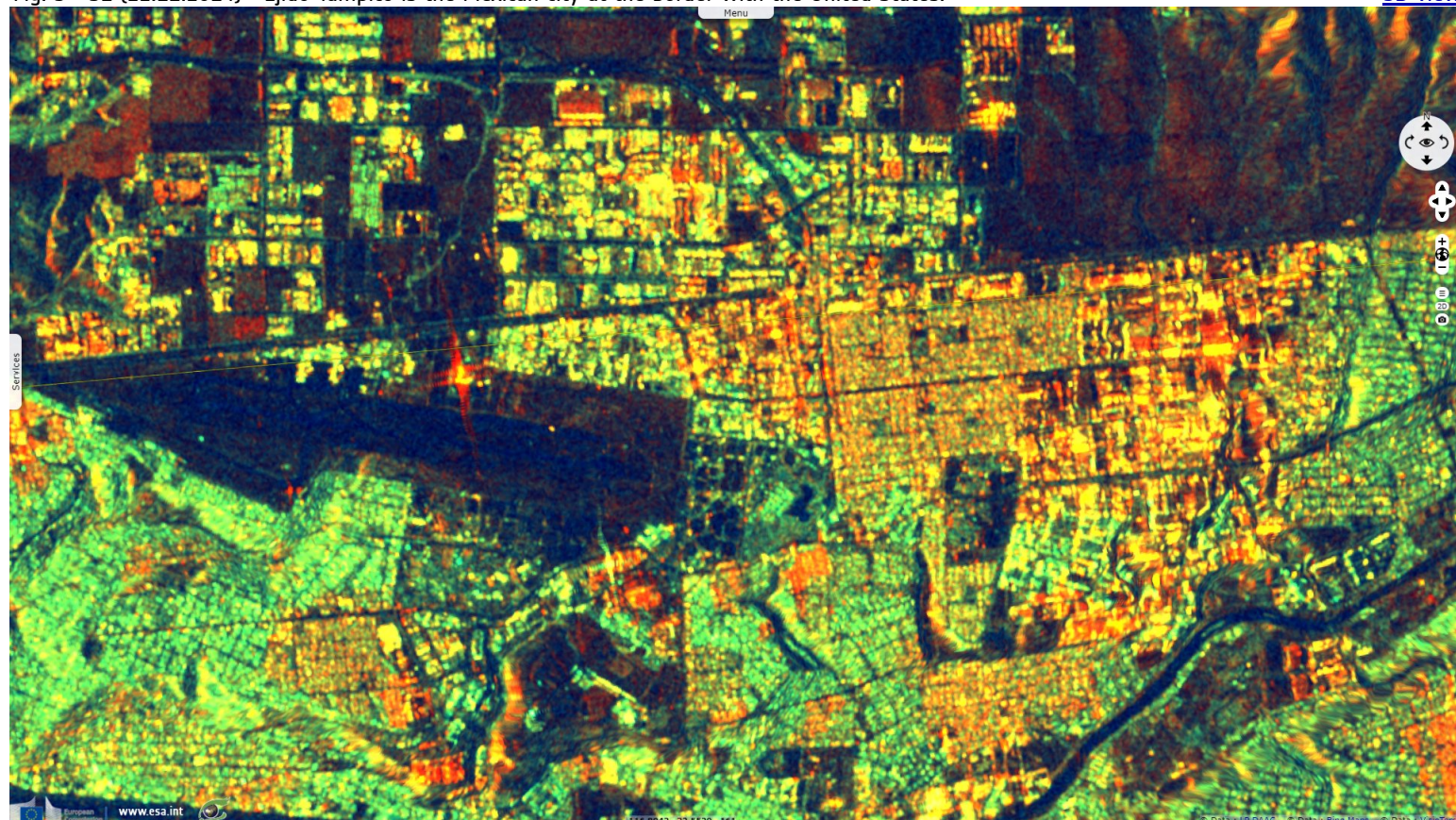
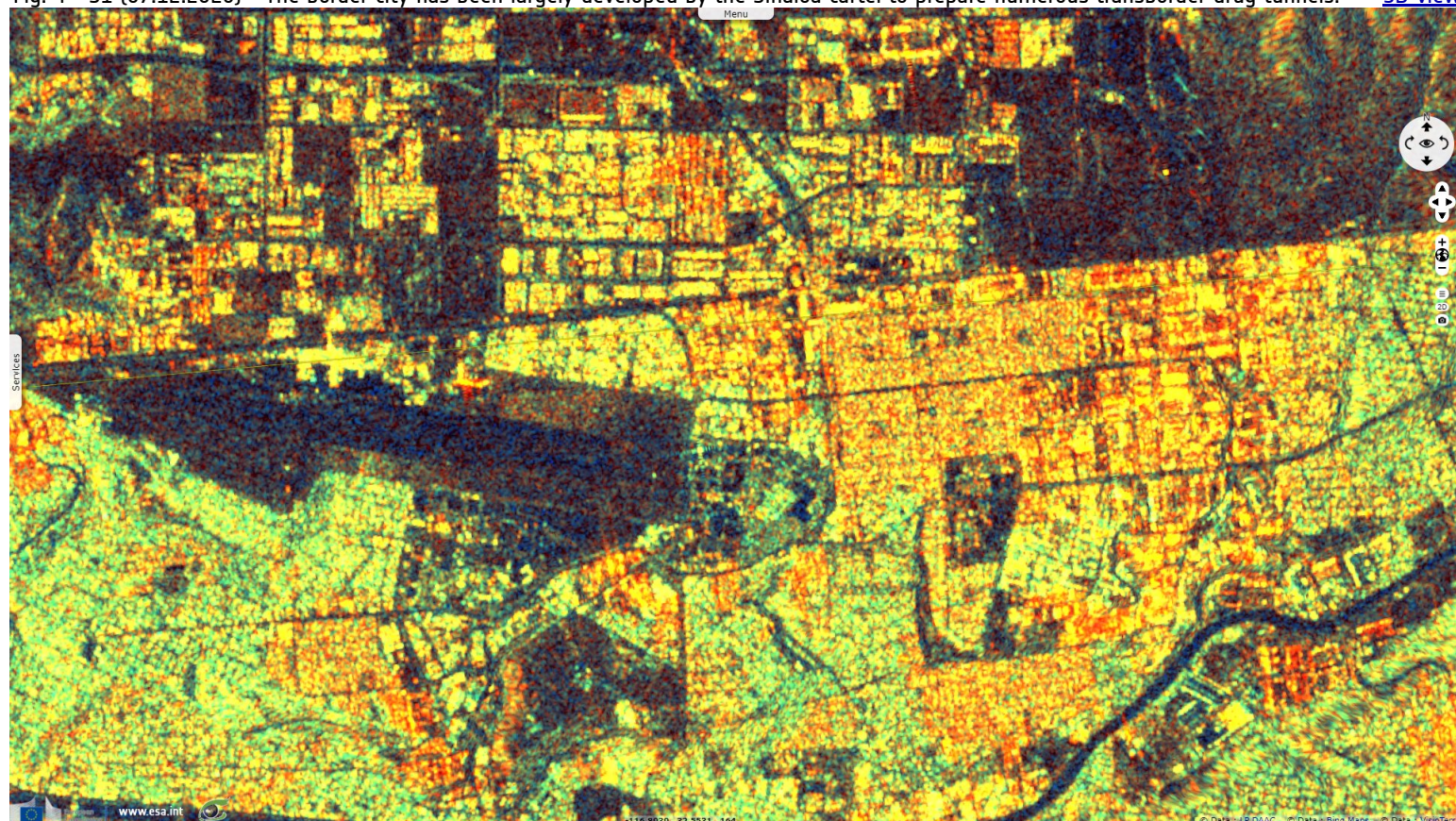


Fig. 4 - S1 (07.12.2020) - The border city has been largely developed by the Sinaloa cartel to prepare numerous transborder drug tunnels.

[3D view](#)



*The views expressed herein can in no way be taken to reflect the official opinion of the European Space Agency or the European Union.
Contains modified Copernicus Sentinel data 2020, processed by VisioTerra.*

More on European Commission space:						
More on ESA:				S-1 website	S-2 website	S-3 website
More on Copernicus program:				SciHub portal	Cophub portal	Inthub portal
More on VisioTerra:				Sentinel Vision Portal	Envisat+ERS portal	Swarm+GOCE portal
				CryoSat portal		