

Kericho, home to the tea plantations of the Kenyan highlands

Sentinel-1 CSAR IW acquired on 11 April 2022 at 15:56:43 UTC
Sentinel-2 MSI acquired on 16 May 2022 at 07:46:21 UTC
Sentinel-2 MSI acquired on 19 August 2022 at 07:46:19 UTC

Author(s): Sentinel Vision team, VisioTerra, France - svp@visioterra.fr

Keyword(s): Land, plateau, highlands, rain-fed agriculture, Kenya, African Rift Valley

[2D Layerstack](#)

Fig. 1 - S2 (06.04.2022) - Kericho County is located in the highlands west of the Kenyan Rift Valley, on the edge of the Mau Forest.

[3D view](#)

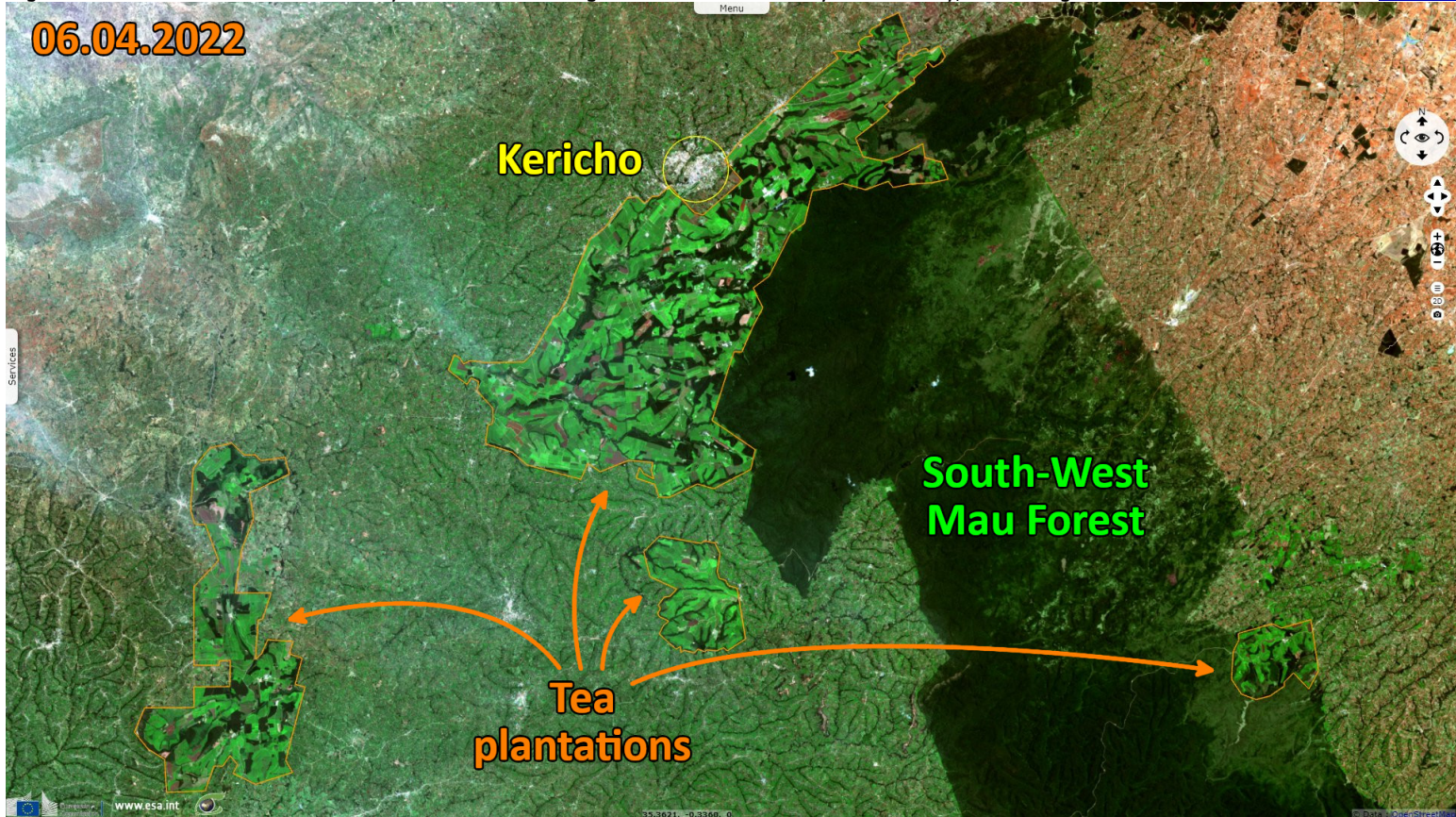
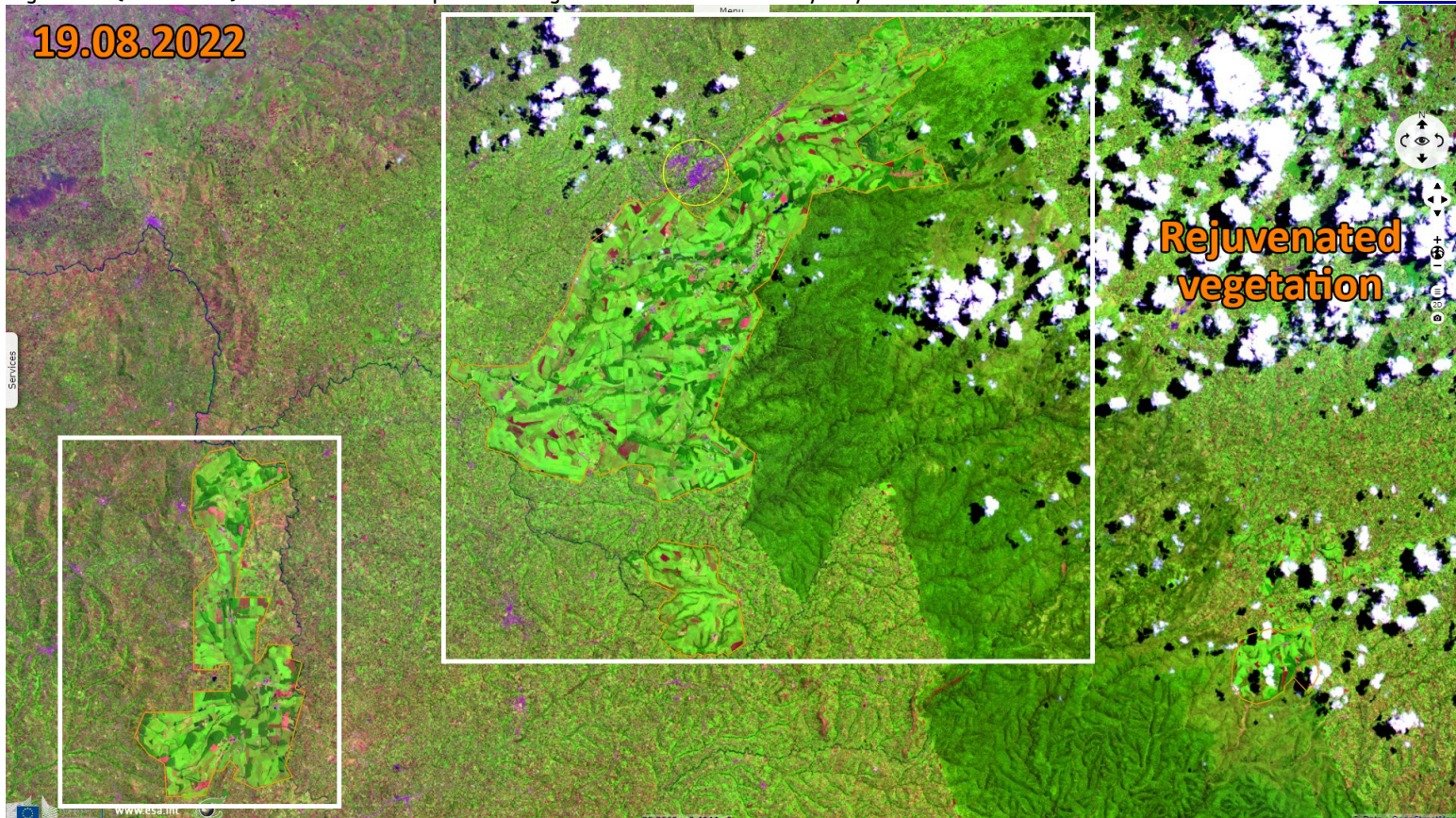


Fig. 2 - S2 (19.08.2022) - Kericho has a temperature range between 10C-29°C and yearly rainfall of 2125 mm.

[3D view](#)



The county has rainy seasons April to June and October to December. The rainfalls are being highest in central part of county where they plant tea. A good number of rivers emanate from the county.

Fig. 3 - COP-DEM - Kericho County slopes gently from 2500 m to ~1800m above the sea level.

[3D view](#)

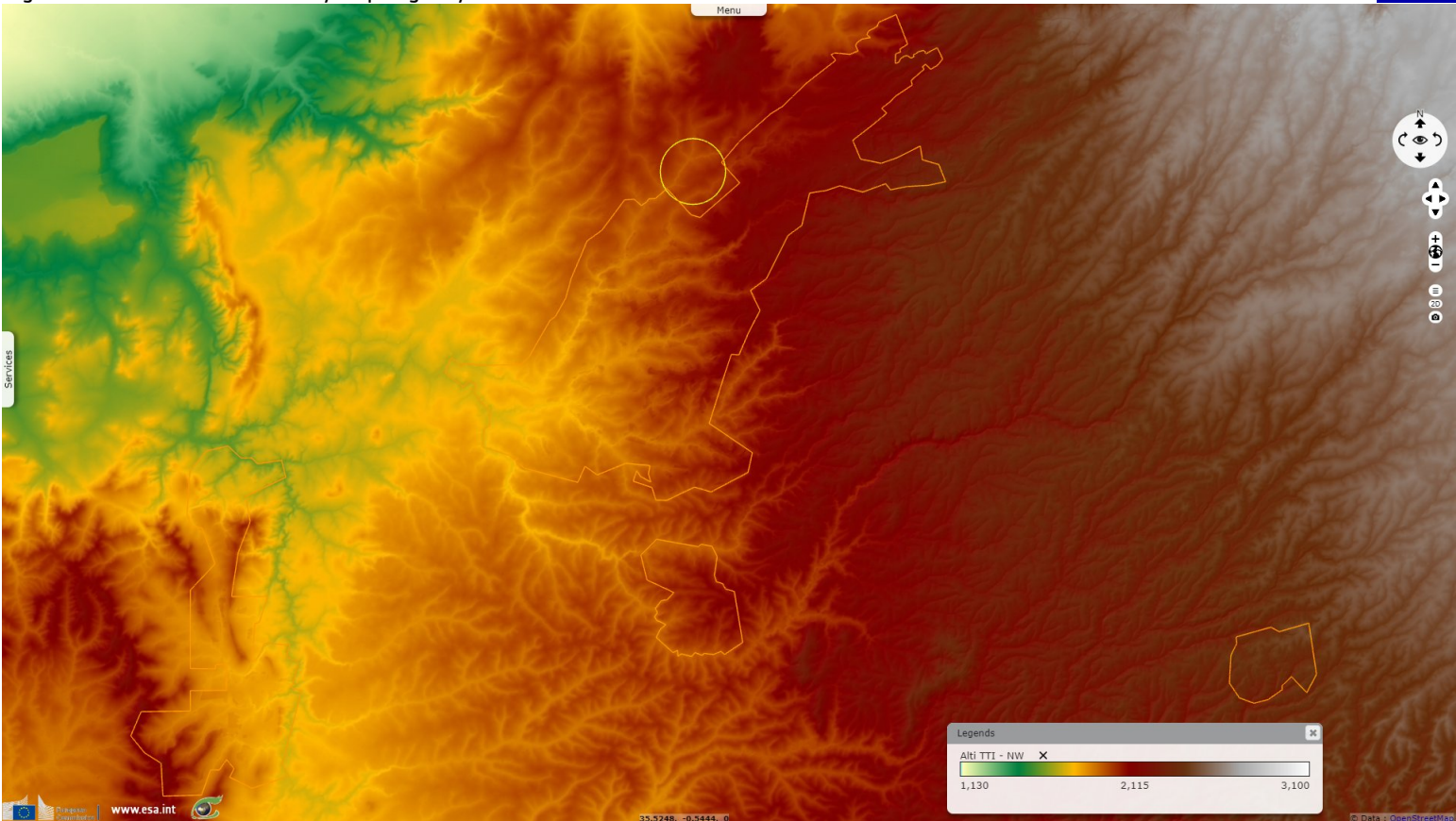
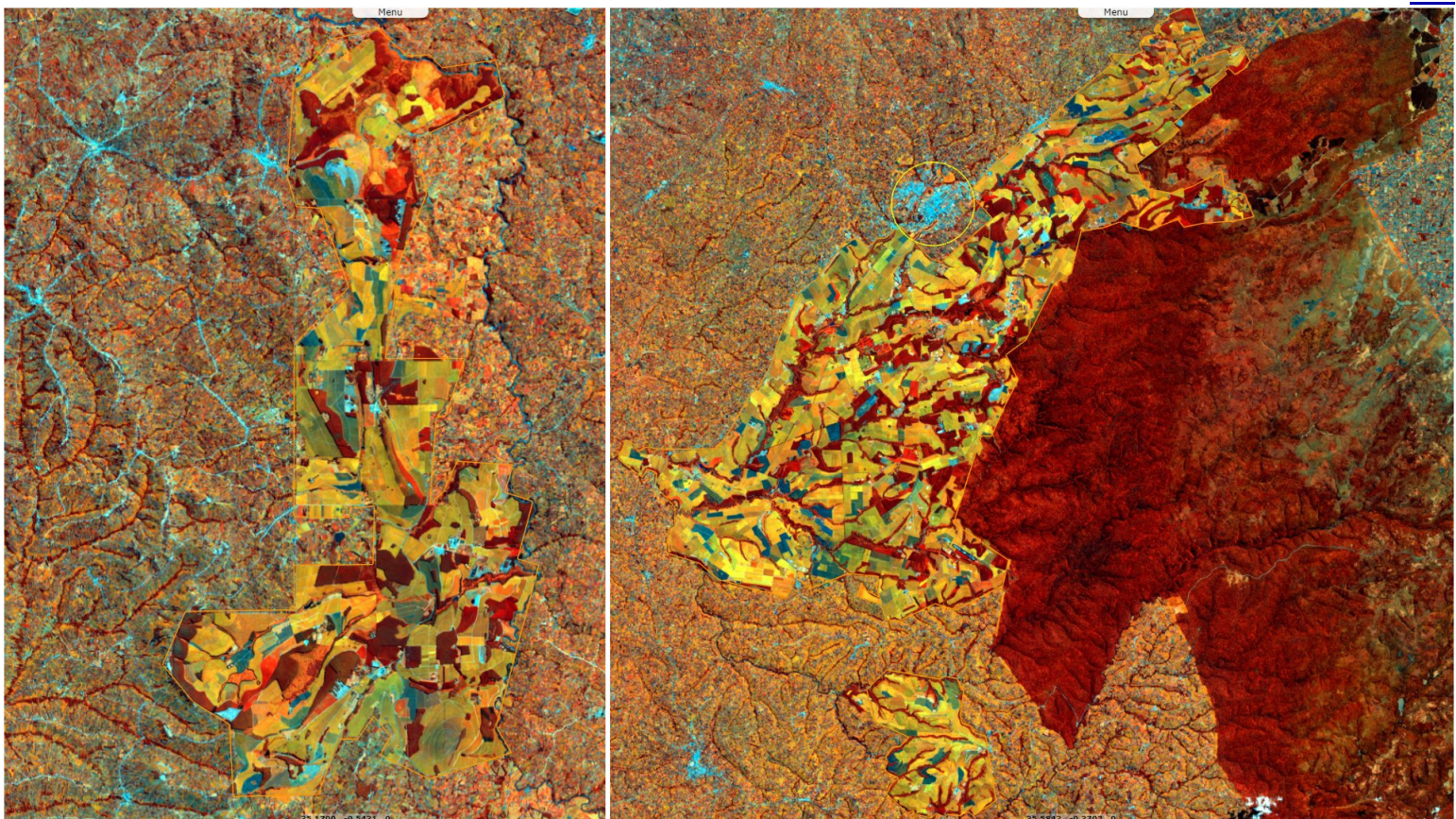














Fig. 4 - S2 (16.05.2022) - Kericho is considered to be home to the best of Kenyan tea. It has contiguous tea plantations up to ~240km².

[3D view](#) [3D view](#)



More on European Commission space:							
More on ESA:				S-1 website	S-2 website	S-3 website	
More on Copernicus program:				Scihub_portal	Cophub_portal	Inthub_portal	Colhub_portal
More on VisioTerra:				Sentinel Vision Portal	Envisat+ERS_portal	Swarm+GOCE_portal	CryoSat_portal