

Iceland puts whaling on hold

Sentinel-3 OLCI FR acquired on 26 July 2017 at 12:32:44 UTC
Sentinel-3 OLCI FR & SLSTR acquired on 17 April 2019 from 09:35:48 to 09:41:48 UTC
Sentinel-2 MSI acquired on 27 June 2021 at 11:53:59 UTC
Sentinel-1 CSAR IW acquired on 17 September 2021 from 06:53:10 to 06:53:35 UTC
Sentinel-3 OLCI FR acquired on 25 May 2023 from 00:55:54 to 00:58:54 UTC

Author(s): Sentinel Vision team, VisioTerra, France - svp@visioterra.fr

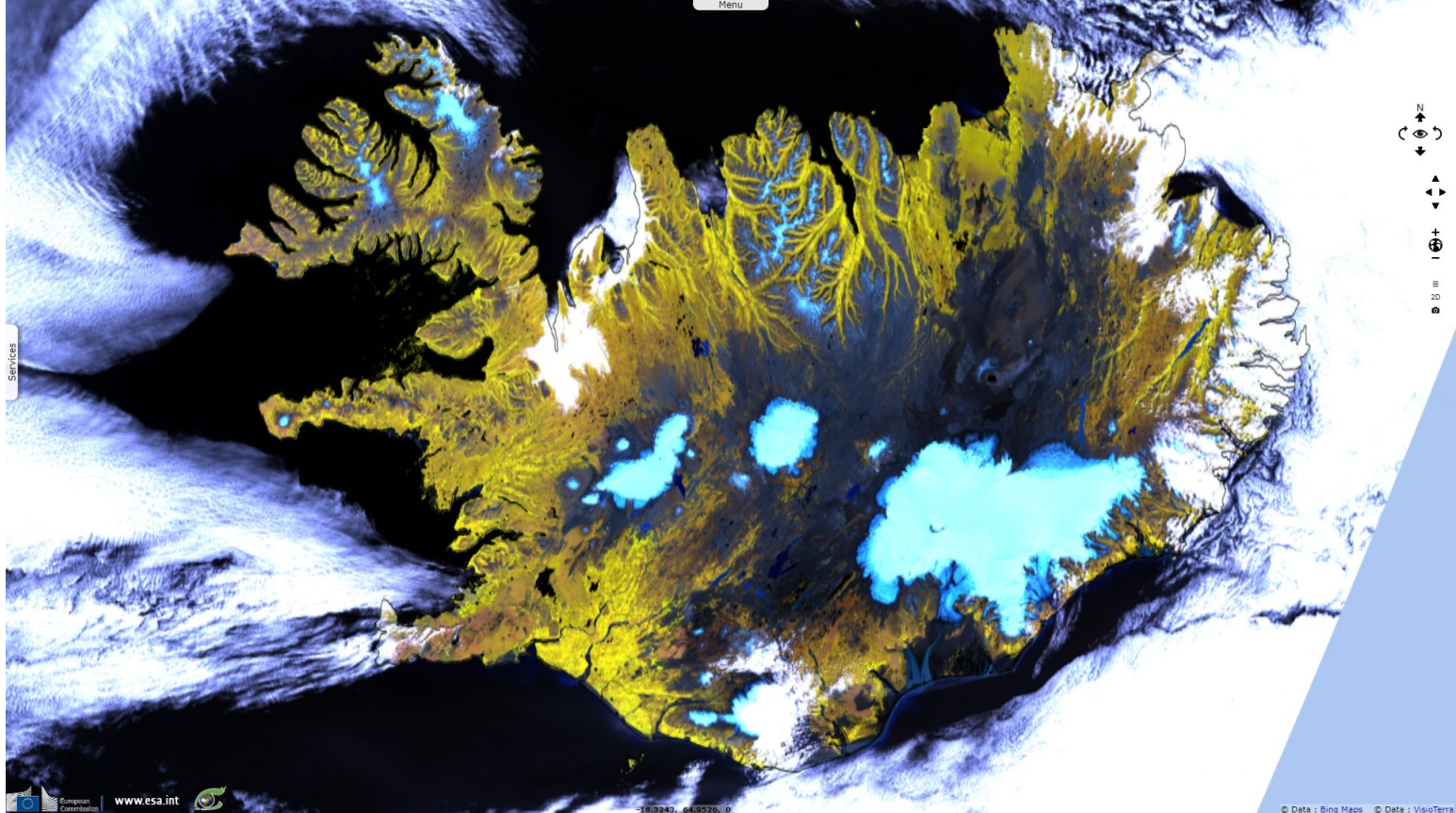
Keyword(s): Coastal, biodiversity, health, fishing, hunting, Iceland, Norway, Denmark, Japan



[3D Layerstack](#)

[3D view](#)

Fig. 1 - S3 OLCI (26.07.2017) - Iceland has decided to pause whaling for 3 months, and likely stop it indefinitely.



The decision was based on excessive suffering, loss of popular support in Iceland and ensuing lack of profitability of its last whaling company.

Fig. 2 - S2 (27.06.2021), S1 (17.09.2021) - Feroe Islands are a Danish autonomous territory where whaling is run under the name grindadráp.

[3D view](#) [3D view](#)



The radar image shows ships of Faroese whalers only two days after 1428 Atlantic white-sided dolphins were slaughtered in a single catch. Their flesh is considered too polluted to be eaten, many cetaceans are burnt or sunk afterwards.

Fig. 3 - S3 (17.04.2017) - The first settlers on Norwegian islands of Svalbard were whalers. Norway still supports commercial whaling.

[3D view](#) [3D view](#)

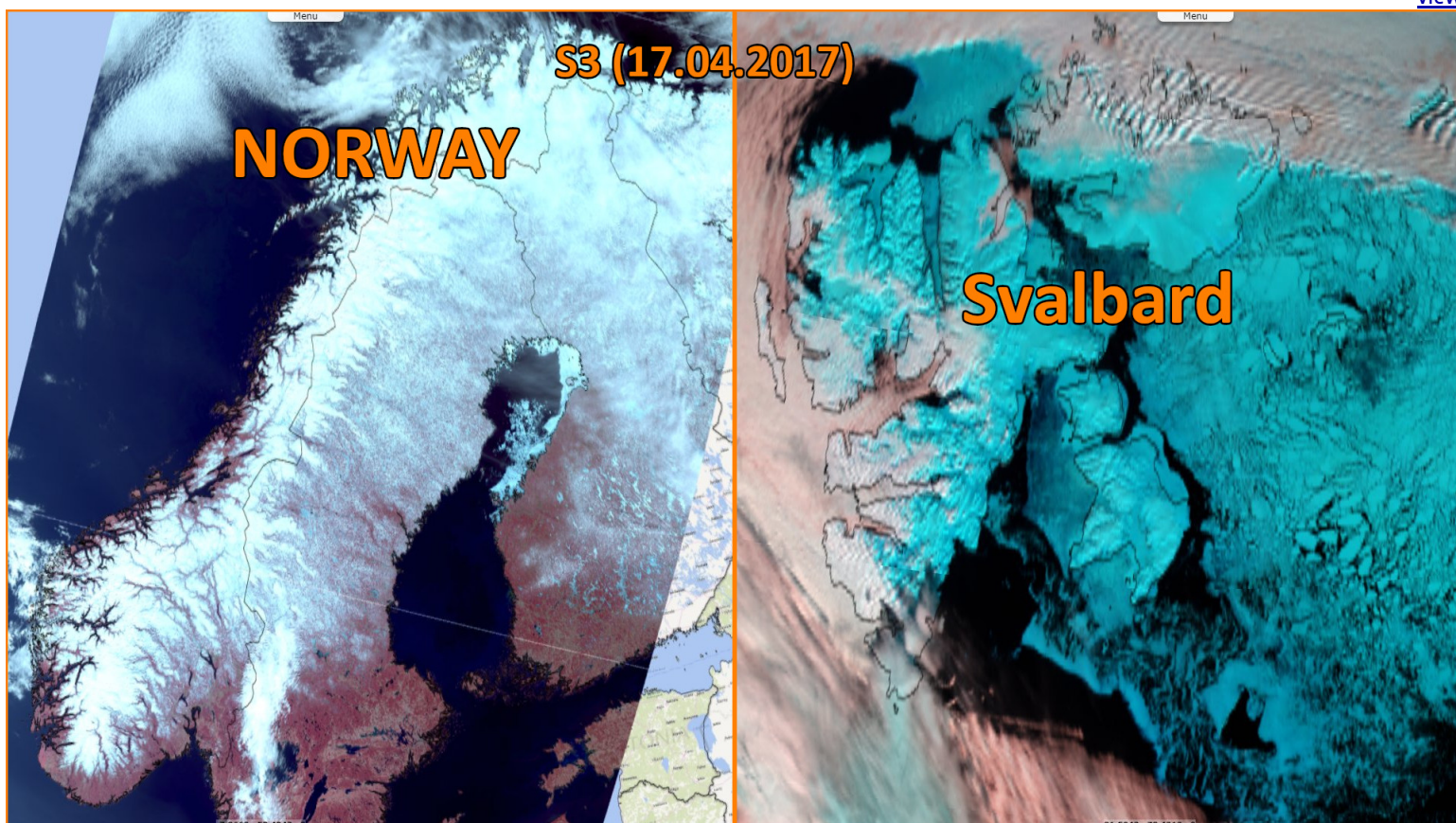
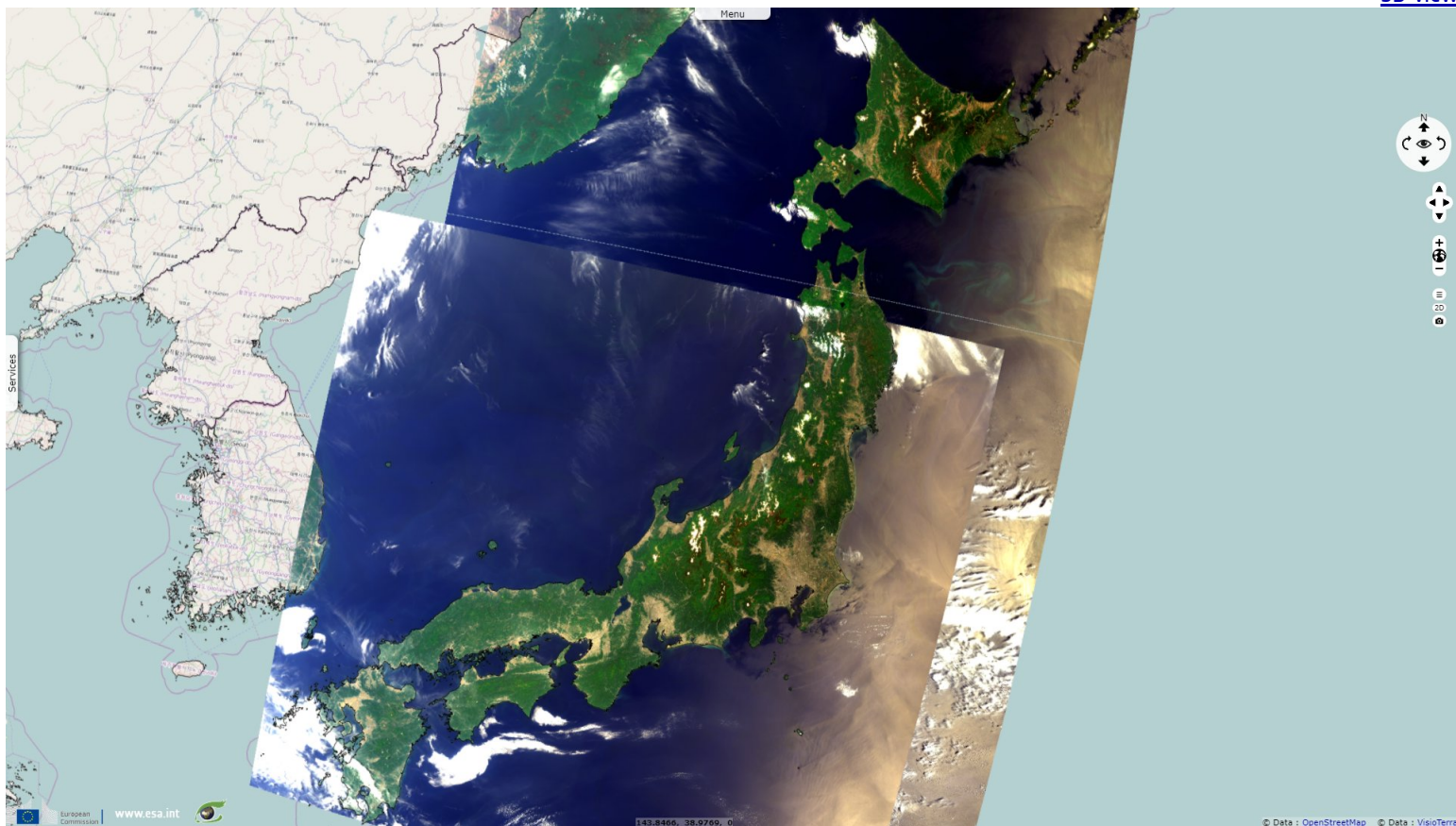


Fig. 4 - S3 (17 & 25.05.2023) - Japan withdrew from International Whaling Commission in 2018. It resumed commercial hunting in its EEZ in 2019.

[3D view](#)



*The views expressed herein can in no way be taken to reflect the official opinion of the European Space Agency or the European Union.
Contains modified Copernicus Sentinel data 2023, processed by VisioTerra.*

More on European Commission space:							
More on ESA:				S-1 website	S-2 website	S-3 website	
More on Copernicus program:				SciHub portal	CopHub portal	Inthub portal	Colhub portal
More on VisioTerra:				Sentinel Vision Portal	Envisat+ERS portal	Swarm+GOCE portal	CryoSat portal



Funded by the EU and ESA

SED-1308-SentinelVision

